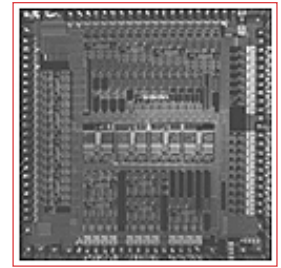




BCM5208

PRODUCT Brief



BCM5208 10/100BASE-TX QUAD- Φ TM TRANSCEIVER

BCM5208 FEATURES

- The Broadcom[®] BCM5208 is a Quad- Φ 10/100BASE-T Transceiver that contains four 10BASE-T/100BASE-TX transceivers
- 10BASE-T/100BASE-TX/FX IEEE 802.3u-compliant
- Full-duplex Support in All Modes
- IEEE 802.3u-compliant Auto-Negotiation
- Media Independent Interface (MII) for Each Port
- Shared MII Serial Management Interface
- Fully-integrated Digital Adaptive Equalizers
- 125 MHz Clock Generator and Timing Recovery
- Integrated Multimode Transmit Wave Shaping
- Integrated Baseline Wander Correction
- Carrier Integrity Monitor on Each Port
- Port Switching for Multisegment Repeaters
- MII Repeater Mode Support in All Modes
- LED Status Pins
- Loop-back Mode for Diagnostics
- IEEE 1149.1 (JTAG) Support
- 3.3V Power Supply
- 208-Pin PQFP Package

SUMMARY OF BENEFITS

- **Fully-integrated TX/FX Quad PHY Transceiver (MII to TX Magnetics/FX Optics)**
 - Increases system port density
 - Decreases system cost per port
 - Simplifies system and board design
 - Reduces power consumption
- **On-chip Multimode Transmit Wave Shaping**
 - Eliminates need for external filters
 - Minimizes EMI
- **Flexible Ethernet PHY Solution:**
 - 10BASE-T, 100BASE-TX or 100BASE-FX full-duplex
 - Suited for both Ethernet switch and repeater products
- **Digital Adaptive Equalization and Clock Recovery**
 - Increases SNR by 3dB over ideal analog equalizers
 - Robust performance in harsh noise environments and over sub-standard cable
 - Immune to on-chip noise and crosstalk
 - Insensitive to variations in process, temperature and voltage

24-Port 10/100BASE-T Ethernet Switch Example

