

SERIES: VSK-S2 | **DESCRIPTION:** AC-DC POWER SUPPLY

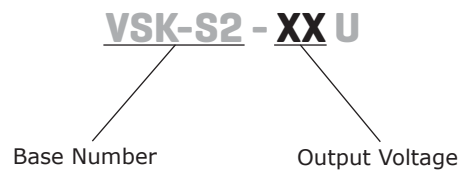
FEATURES

- up to 2 W continuous power
- compact board mount design
- universal input (85~305 Vac / 120~430 Vdc)
- single output from 3.3~24 V
- over current and short circuit protection
- UL/cUL and CE safety approvals
- efficiency up to 78%



MODEL	output voltage	output current	output power	ripple and noise ¹	efficiency
	(Vdc)	max (A)	max (W)	max (mVp-p)	typ (%)
VSK-S2-3R3U	3.3	0.6	2	200	65
VSK-S2-5U	5	0.4	2	200	70
VSK-S2-9U	9	0.222	2	200	72
VSK-S2-12U	12	0.167	2	200	76
VSK-S2-15U	15	0.133	2	200	76
VSK-S2-24U	24	0.083	2	200	78

Notes: 1. At full load, 100 ~ 240 Vac input, 20 MHz bandwidth oscilloscope, each output terminated with 10 μ F aluminum electrolytic and 0.1 μ F ceramic capacitors.
 2. All specifications are measured at rated input voltage, rated output load, TA=25°C, and humidity < 75% unless otherwise specified

PART NUMBER KEY


INPUT

parameter	conditions/description	min	typ	max	units
voltage		85 120		305 430	Vac Vdc
frequency		47		63	Hz
current	at 110 Vac at 230 Vac		44 25		mA mA
inrush current	at 110 Vac at 230 Vac		5 11		A A

OUTPUT

parameter	conditions/description	min	typ	max	units
line regulation				±2	%
load regulation	10 ~ 100%			±5	%
ripple and noise			100	200	mVp-p
voltage accuracy	3.3 V model all other models			±6 ±5	% %
switching frequency				100	kHz

PROTECTIONS

parameter	conditions/description	min	typ	max	units
over current protection				110	%
short circuit protection	auto recovery with no damage from a short on any output				

SAFETY & COMPLIANCE

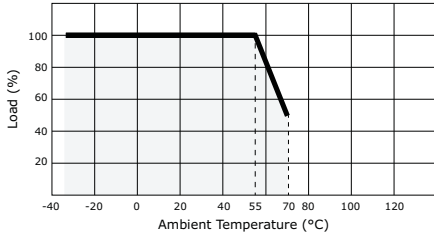
parameter	conditions/description	min	typ	max	units
isolation voltage	for 1 minute	3,000			Vac
safety approvals	UL 60950-1, EN 60950-1/IEC 60950-1				
safety class	class II				
EMI/EMC	EN 55022 Class B, IEC/EN 61000-4-(2,3,4,5,6)				
leakage current				0.15	mA
RoHS compliant	yes				
MTBF	25°C	300,000			hrs

ENVIRONMENTAL

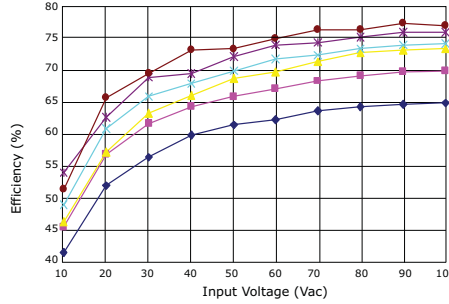
parameter	conditions/description	min	typ	max	units
operating temperature		-25		70	°C
storage temperature		-40		85	°C
operating humidity	non-condensing	30		90	%
storage humidity		20		95	%

DERATING CURVES

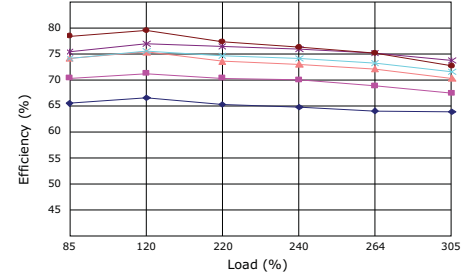
1. output power vs. ambient temperature



2. efficiency vs. output power (Vin=220Vac)



3. efficiency vs. input voltage (load=100%)

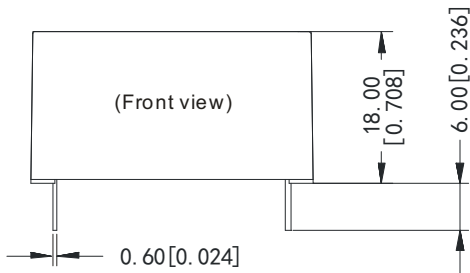


MECHANICAL

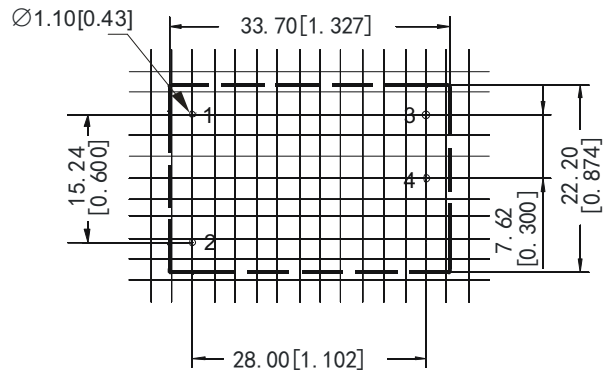
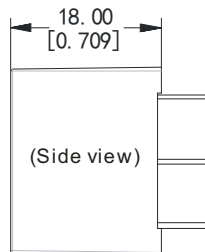
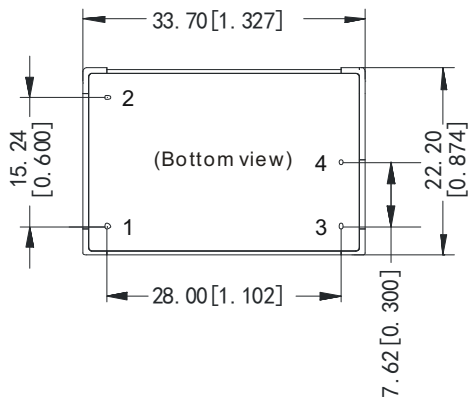
parameter	conditions/description	min	typ	max	units
dimensions	1.327 x 0.874 x 0.708 (33.70 x 22.20 x 18.00 mm)				inch
case material	UL94V-0				
weight			20		g

MECHANICAL DRAWING

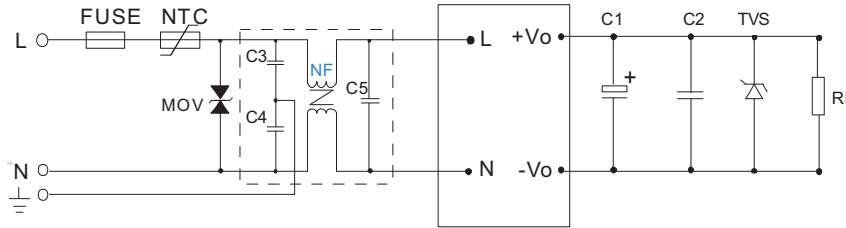
units: mm [inches]
 tolerance: ±0.5 [±0.02]
 pin section tolerance: ±0.10 mm [±0.004]



PIN CONNECTIONS	
PIN	FUNTION
1	AC(N)
2	AC(L)
3	-Vo
4	+Vo



TYPICAL APPLICATION CIRCUIT



EXTERNAL CAPACITORS TYPICAL VALUE (Unit: μF)			
MODEL	C1	C2	TVS
VSK-S2-3R3U	220 μF	0.1 $\mu\text{F}/50\text{ V}$	P4KE6.8A
VSK-S2-5U	220 μF	0.1 $\mu\text{F}/50\text{ V}$	P4KE6.8A
VSK-S2-9U	120 μF	0.1 $\mu\text{F}/50\text{ V}$	P4KE12A
VSK-S2-12U	120 μF	0.1 $\mu\text{F}/50\text{ V}$	P4KE20A
VSK-S2-15U	120 μF	0.1 $\mu\text{F}/50\text{ V}$	P4KE20A
VSK-S2-24U	68 μF	0.1 $\mu\text{F}/50\text{ V}$	P4KE30A

- Notes:
- Output filtering capacitor C1 is an electrolytic capacitor. It is recommended to use high frequency and low impedance electrolytic capacitors. For capacitance and current of capacitor please refer to manufacturer's datasheet. Voltage derating of capacitor should be 80% or above. C2 is ceramic capacitor, it is used to filter high frequency noise. TVS is a recommended component to protect post-circuits (if converter fails).
 - It is recommended to use a 2A/250V slow blow FUSE.
 - MOV is required to protect the device under surge. Varistor model: 561KD14
 C3,C4: Y capacitor, recommended parameter 2,200~4,700pF/400V;
 C5: X capacitor, recommended parameter 0.1~0.33 $\mu\text{F}/300\text{V}$;
 NF: common model choke, recommended inductance is about 15mH~30mH.

REVISION HISTORY

rev.	description	date
1.0	initial release	04/19/2012
1.01	updated features	06/04/2012
1.02	V-Infinity branding removed	08/16/2012

The revision history provided is for informational purposes only and is believed to be accurate.



CUI INC[®]

Headquarters
 20050 SW 112th Ave.
 Tualatin, OR 97062
800.275.4899

Fax 503.612.2383
cui.com
 techsupport@cui.com

CUI offers a two (2) year limited warranty. Complete warranty information is listed on our website.

CUI reserves the right to make changes to the product at any time without notice. Information provided by CUI is believed to be accurate and reliable. However, no responsibility is assumed by CUI for its use, nor for any infringements of patents or other rights of third parties which may result from its use.

CUI products are not authorized or warranted for use as critical components in equipment that requires an extremely high level of reliability. A critical component is any component of a life support device or system whose failure to perform can be reasonably expected to cause the failure of the life support device or system, or to affect its safety or effectiveness.