

Keysight T4010S Conformance Test System

Technical Overview



Overview

The Keysight Technologies, Inc. T4010S conformance test systems includes LTE and LTE-Advanced carrier aggregation (CA), RF and RRM conformance testing, RF solutions for design verification and pre-conformance of LTE device. The system goes beyond 3GPP-defined LTE RF and RRM conformance test cases, offering a wide range of supplementary test plans required for network operator acceptance and more. Compared to competing LTE RF and RRM test systems, the T4010S is the easiest to use test platform available.

Conformance testing

The T4010S conformance test system caters to the specific needs of laboratories at UE and chipset manufacturers and third-party certification test houses. It provides a comprehensive set of tools that helps you through the process of entering UE-under-test data into the test system, defining the test plan to be executed, configuring the system to execute the tests according to the specific UE characteristics, analyzing the tests results, and producing the associated test reports.

With an ever-increasing number of bands and frequency combinations, plus the need to support an expanding set of GCF and PTCRB test cases, Keysight is dedicated to an ongoing program of development and validation to make the Keysight T4010S test platform an invaluable and efficient asset for your test laboratory.

Design verification

To address the unique testing needs of baseband and RF hardware developers, the system provides a comprehensive set of test cases following the 3GPP 36.521-1 test specifications for out-of-the-box pre-conformance testing of LTE UE designs.

During the early phases of development, the T4010S DV system lets you create or customize test cases to verify LTE UE RF parametric design characteristics, preventing costly redesigns and modifications in later project phases. That increases confidence and reduces the time-to-market for new LTE UE designs. Its modularity and flexibility also make the system an ideal tool for quality assurance and manufacturing screening.

Key features

The Keysight T4010S conformance test system has the capabilities you need to speed your LTE UE designs to market:

- Easy-to-use test campaign management environment streamlines test execution and result analysis through design verification, conformance test, and supplementary testing
- Reduced operation and maintenance costs—uses the most efficient hardware architecture on the market in terms of testing coverage with standard hardware supporting all active LTE frequency bands and duplex modes
- Automated and unattended RF path compensation procedures
- Clear and immediate access to the test results, including export to different formats (html, CSV, and XML) for extended analysis and archival
- Test beyond the scope of 3GPP conformance. Configure test conditions and LTE signaling to customize your test plan with ease

Complex testing made simple

This integrated RF and RRM solution will help you from the design and verification stages up to certification of the final product, including operator's acceptance test plans. Your complex testing is made simple thanks to the T4010S configuration options, ease of use, and automation capabilities.

Accelerate Your Time to Market

Complete 3GPP test case coverage for RF and RRM according to GCF and PTCRB requirements

The T4010S E7515A-based system (GCF/PTCRB TP 195) provides you with the complete set of 3GPP TS 36.521-1 LTE RF and 3GPP TS 36.521-3 LTE RRM conformance test cases, validated according to GCF and PTCRB requirements. These test cases include all the duplex/band/bandwidths combinations needed for certification purposes, including bands with different channel bandwidths requirements for GCF and PTCRB. And, as new requirements emerge, Keysight continues to add test cases. For an up to date list of validated tests, please contact Keysight Technologies.

Complete set of RF measurement procedures for UE characterization

As part of design verification the system provides you with a complete set of standard and frequency band-independent test procedures that you can customize. These test procedures cover the complete set of measurements typically required to characterize LTE UEs including:

- Power and power control measurements
- Global in-channel measurements
- Receiver measurements
- Receiver performance measurements
- CQI, sub-band CQI, and PMI reporting measurements
- Occupied bandwidth, spectrum mask, and adjacent channel leakage power ratio measurements
- Blocking and intermodulation measurements
- Sustained data rate performance measurements
- feICIC/eICIC



Integration of E7515A UXM wireless test set

The T4010S system is built around the Keysight Technologies, Inc. E7515A UXM wireless test set, extending the UXM functionality to pre-conformance & conformance testing. It also adds following features:

- Receiver test capabilities including flexible channel definitions and closed-loop testing
- Frequency division duplex (FDD) and time division duplex (TDD) options
- Integrated fading
- Out of the channel measurements (OBW, SEM, ACLR)

T4010S conformance test system is based on the E7515A UXM wireless test system and includes the following:

- Support for 1CC, 2CC, 3CC, 4CC band combinations and beyond
- Sustained data rate
- Scalable solution from one box to full system
- Dual-feed antenna UE support
- 2CC FDD/TDD CA intra-band contiguous/non-contiguous inter-band UL CA, and mixed mode test cases
- UL CA 64QAM test cases
- feICIC/eICIC test cases
- 3CC FDD/TDD and mixed mode test cases
- 256QAM DL test cases
- 4CC test cases

Comprehensive test system automation capabilities

The automated T4010S systems enables unattended operation, maximizing laboratory productivity. The test systems can be easily configured to automatically control the UE under test using AT commands or non-standard, UE-specific command sets.

Keysight provides access to the API used by the test system to implement the UE control, allowing you to develop your own UE drivers to automate test execution. Automation in the T4010S system also controls ancillary equipment, like power supplies and climate chambers, for completely unattended extreme condition testing.

Easy upgrade options to expand test capabilities

Since all T4010S systems share the same underlying hardware and software platform, it is easy to add conformance or design verification parametric testing as your needs evolve. Better still, DV and CT system software versions can coexist on the same test system, allowing you to switch between the systems at will, maximizing convenience and cost-effectiveness.

Compact and Scaleable Platform

The Keysight T4010S conformance test system can be scaled to your requirements to support both RF CT and DV, and RRM test cases.

Bench-top configuration

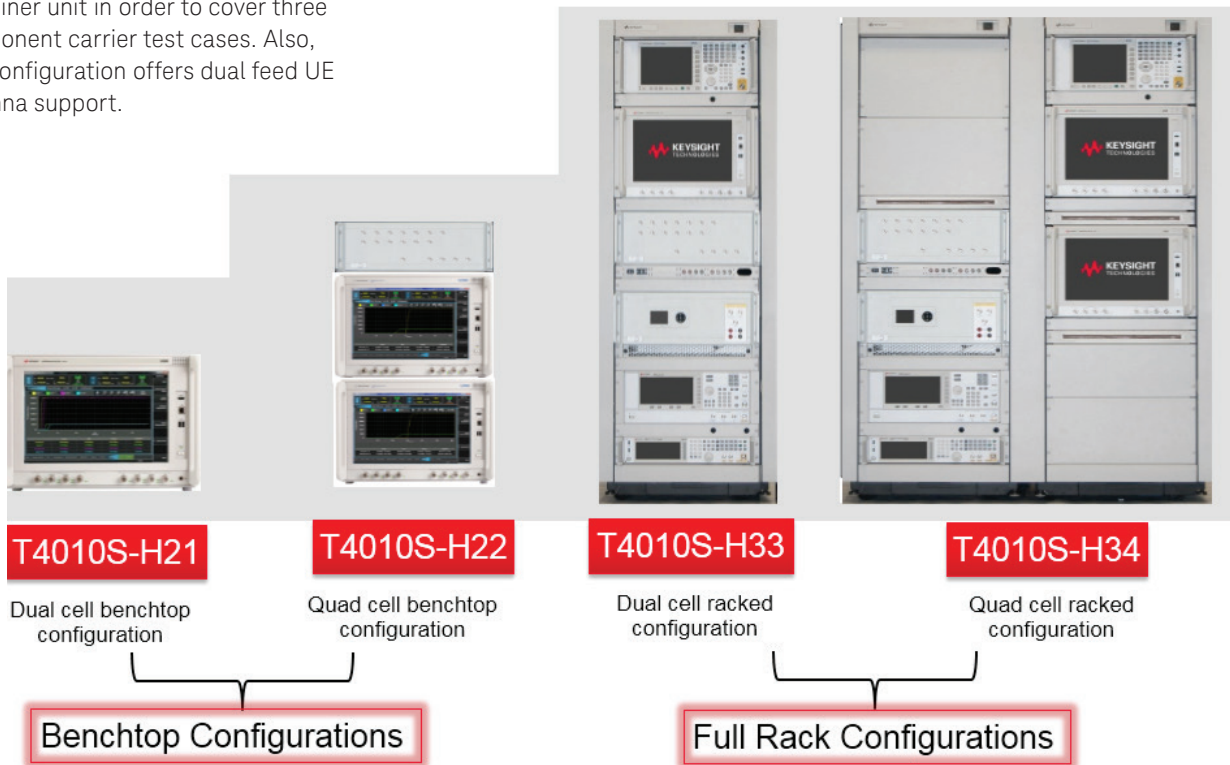
To make it easy to adapt to your changing needs, scalability is one of the key aspects of the T4010S. There are two different bench-top configurations available.

A single E7515A wireless test system can generate up to two component carriers and enable testing of in-channel characteristics of the UE's transmitter and receiver, receiver performance, CSI tests, spurious emission, ACLR, SEM, OBW, as well as TDD CA and sustained data rate test cases.

- The single box solution can be easily upgraded to a higher coverage bench-top configuration by adding another E7515A and T1255A LTE multicell combiner unit in order to cover three component carrier test cases. Also, this configuration offers dual feed UE antenna support.

Full test system configuration

These configurations are capable of the broadest range of testing, including all UE RF characteristics, adding in-band and out-of-band blocking, intermodulation, transmitter and receiver spurious tests for two and three component carriers. Also, this configuration offers dual feed UE antenna support.



Create and Customize Your Test Plans with Ease

The Keysight T4010S features an intuitive and easy to use set of software tools to support the whole testing cycle:

- Test case parametrization
- Test project creation and execution
- Results analysis

You can select the test cases to be executed from within the test case libraries developed and validated by Keysight Technologies. Different versions of these libraries can be installed at any time for maximum convenience. Simple drag-and-drop operations make it easy to select which test cases to run and the chosen sequence of tests can be saved as a custom test plan for later reuse. Test plans saved can be updated to the last specification versions. Frequency band, channel bandwidth, specific frequency channels, and extreme condition testing settings are automatically configured by the test system based on simple dialog boxes provided by the test system. UE parameters are checked and configured automatically by the test system as well.

When test execution parameters need to be modified, it can easily be done using the test campaign editor window within the project management tool. You can also select a set of parameters for direct modification, allowing test case customization.

Parameters related to the UE automation, power supply, climate chamber management, and automatic tests retrial can be set by the test system operator. In addition to the T4010S CT system, these parameters are common to most Keysight testing products.

Once the tests have been performed, Keysight test systems provide data analysis tools and allow the export of the data to several formats (.html, .csv, .xml, and others) for easy exchange with all the involved parties.

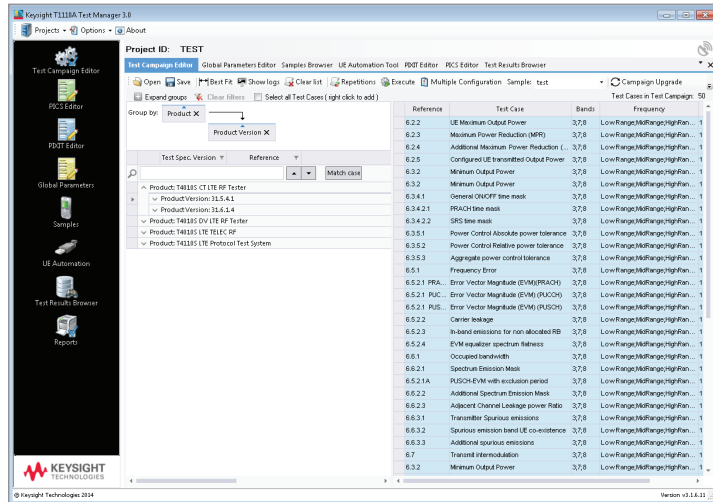


Figure 1. Test plan generation

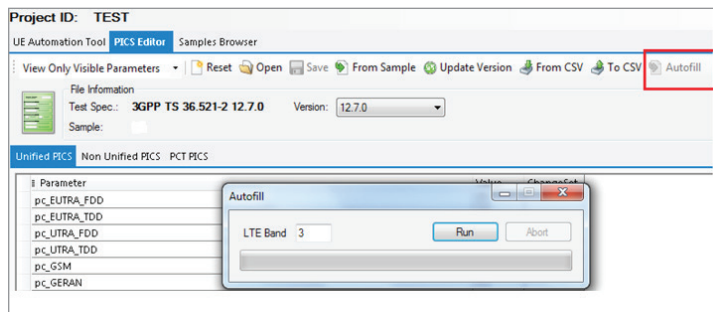


Figure 2. Automatic PICS filling

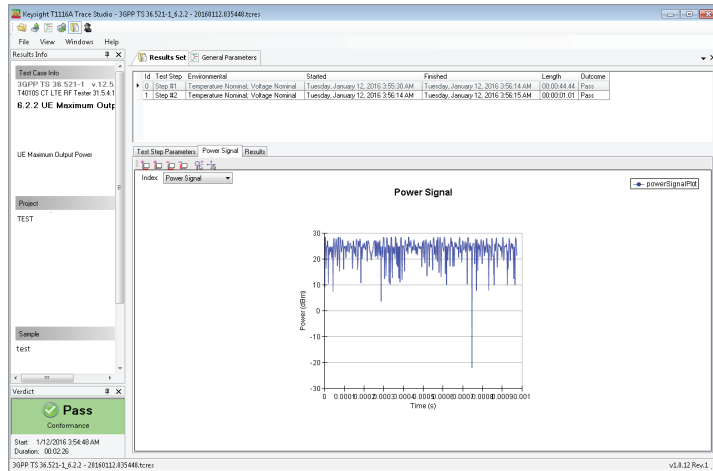


Figure 3. Results analysis (graphic view)

Test System Technical Information

Configuration	Dimensions W x H x D	Weight
1: Dual-cell bench-top	435 x 305 (321 with feet) x 445 (504 with handles)	50 kg
2: Quad-cell bench-top	1500 x 305 (321 with feet) x 445 (504 with handles)	110 kg
4: Dual-cell full rack	600 x 1650 x 900 (+500 with keyboard tray)	265 kg
4: Quad-cell full rack	1200 x 1650 x 900 (+500 with keyboard tray)	415 kg

General Data

Environmental conditions	
Temperature	
Storage	-10 to 50 °C
Operating	5 to 40 °C
Operating temperature after RF calibration	20 to 35 °C
	5 to 85% (non-condensing)
Humidity	
Altitude operating range	Up to 2000 m
Electrical safety	Complies with European Low Voltage Directive 2006/95/EC IEC/EN 61010-1, 3rd Edition CAN/CSA-C22.2 No. 61010-1-12 UL Std. No. 61010-1 (3rd Edition)
EMC	Complies with European EMC Directive 2004/108/EC: IEC/EN 61326-1 CISPR Pub 11 Group 1, class A AS/NZS CISPR 11 ICES/NMB-001 This ISM device complies with Canadian ICES-001. Cet appareil ISM est conforme à la norme NMB-001 du Canada.
Frequency range	Defined by 3GPP E-UTRA operating bands FDD and TDD
Input and output connector	N-type 50 ohms
Supported bandwidths	1.4, 3, 5, 10, 15, 20 MHz

Supported Test Standards

The system design is based on the following standards:

- 3GPP TS 36.521-1
- 3GPP TS 36.521-3
- 3GPP TS 36.508
- 3GPP TS 36.509
- 3GPP TS 36.521-2

Evolving

Our unique combination of hardware, software, support, and people can help you reach your next breakthrough. We are unlocking the future of technology.



From Hewlett-Packard to Agilent to Keysight



myKeysight

myKeysight

www.keysight.com/find/mykeysight

A personalized view into the information most relevant to you.

KEYSIGHT SERVICES

Accelerate Technology Adoption.
Lower costs.

Keysight Services

www.keysight.com/find/service

Our deep offering in design, test, and measurement services deploys an industry-leading array of people, processes, and tools. The result? We help you implement new technologies and engineer improved processes that lower costs.



Three-Year Warranty

www.keysight.com/find/ThreeYearWarranty

Keysight's committed to superior product quality and lower total cost of ownership. Keysight is the only test and measurement company with three-year warranty standard on all instruments, worldwide. And, we provide a one-year warranty on many accessories, calibration devices, systems and custom products.



Keysight Assurance Plans

www.keysight.com/find/AssurancePlans

Up to ten years of protection and no budgetary surprises to ensure your instruments are operating to specification, so you can rely on accurate measurements.

Keysight Channel Partners

www.keysight.com/find/channelpartners

Get the best of both worlds: Keysight's measurement expertise and product breadth, combined with channel partner convenience.

For more information on Keysight Technologies' products, applications or services, please contact your local Keysight office. The complete list is available at: www.keysight.com/find/contactus

Americas

Canada	(877) 894 4414
Brazil	55 11 3351 7010
Mexico	001 800 254 2440
United States	(800) 829 4444

Asia Pacific

Australia	1 800 629 485
China	800 810 0189
Hong Kong	800 938 693
India	1 800 11 2626
Japan	0120 (421) 345
Korea	080 769 0800
Malaysia	1 800 888 848
Singapore	1 800 375 8100
Taiwan	0800 047 866
Other AP Countries	(65) 6375 8100

Europe & Middle East

Austria	0800 001122
Belgium	0800 58580
Finland	0800 523252
France	0805 980333
Germany	0800 6270999
Ireland	1800 832700
Israel	1 809 343051
Italy	800 599100
Luxembourg	+32 800 58580
Netherlands	0800 0233200
Russia	8800 5009286
Spain	800 000154
Sweden	0200 882255
Switzerland	0800 805353
	Opt. 1 (DE)
	Opt. 2 (FR)
	Opt. 3 (IT)
United Kingdom	0800 0260637

For other unlisted countries:
www.keysight.com/find/contactus
(BP-10-3-16)



www.keysight.com/go/quality
Keysight Technologies, Inc.
DEKRA Certified ISO 9001:2015
Quality Management System