

Electrical Specifications (at 25°C unless noted)

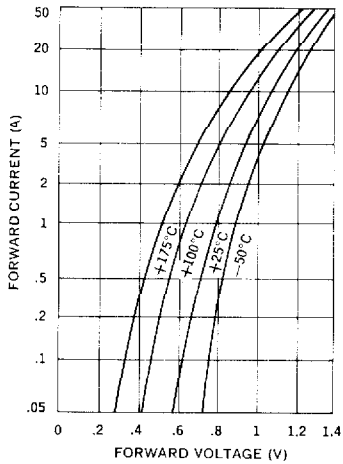
Type	PIV Per Leg	Peak Forward Voltage Drop*		Maximum Reverse Recovery Time†	Maximum Leakage Current Per Leg @ PIV	
		Minimum	Maximum		T _C = 25°C	T _C = 100°C
	Volts			μS	μA	μA
JAN SPA25 JAN SPB25 JAN SPC25 JAN SPD25	100 200 400 600	0.9V	1.4V	2	2	150
		@ 39A(pk)				

3

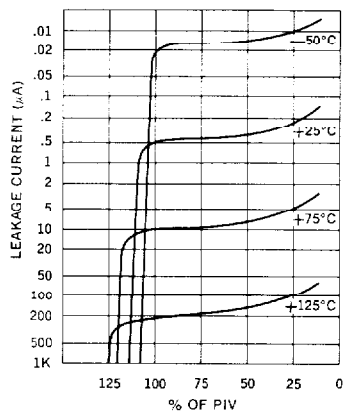
*Peak forward voltage drop is measured at a pulse width of 8.3ms.

†Measured in a reverse recovery circuit switching from 0.5A forward to 1.0A reverse current recovery to 0.5A.

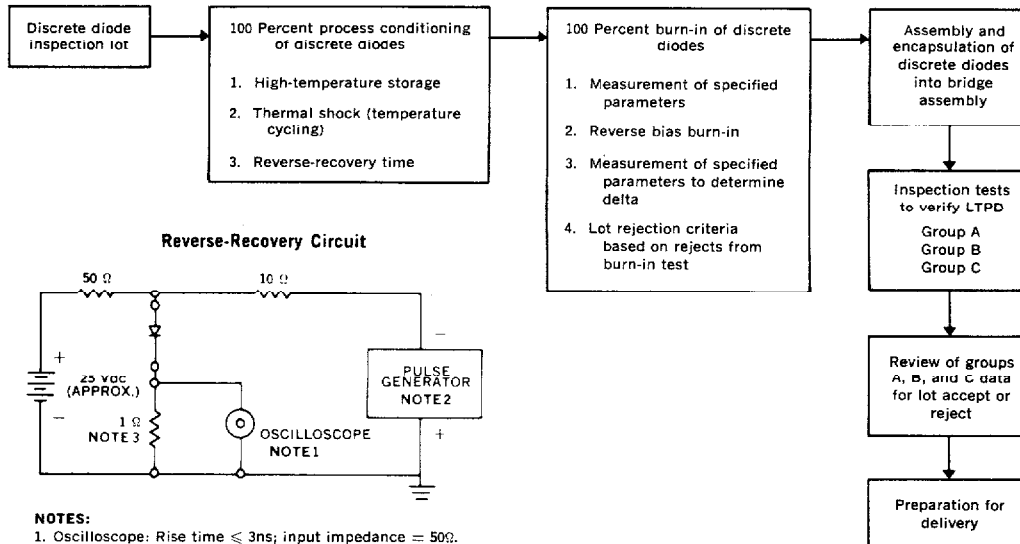
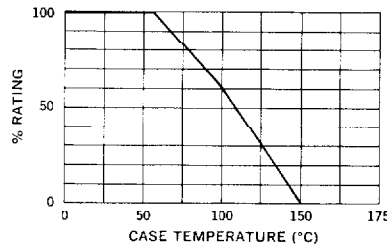
Typical Forward Voltage Per Leg vs. Forward Current



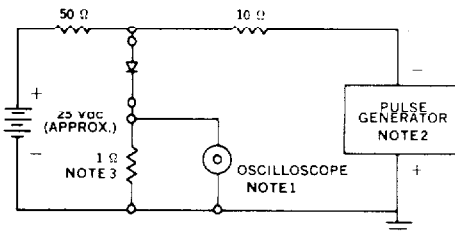
Typical Leakage Current vs. PIV



Current Derating Curve



Reverse-Recovery Circuit



- NOTES:**
- Oscilloscope: Rise time ≤ 3ns; input impedance = 50Ω.
 - Pulse Generator: Rise time ≤ 8ns; source impedance 10Ω.
 - Current viewing resistor, non-inductive, coaxial recommended.