

240 126  
to  
240.242

# Trim Trio Interconnection System

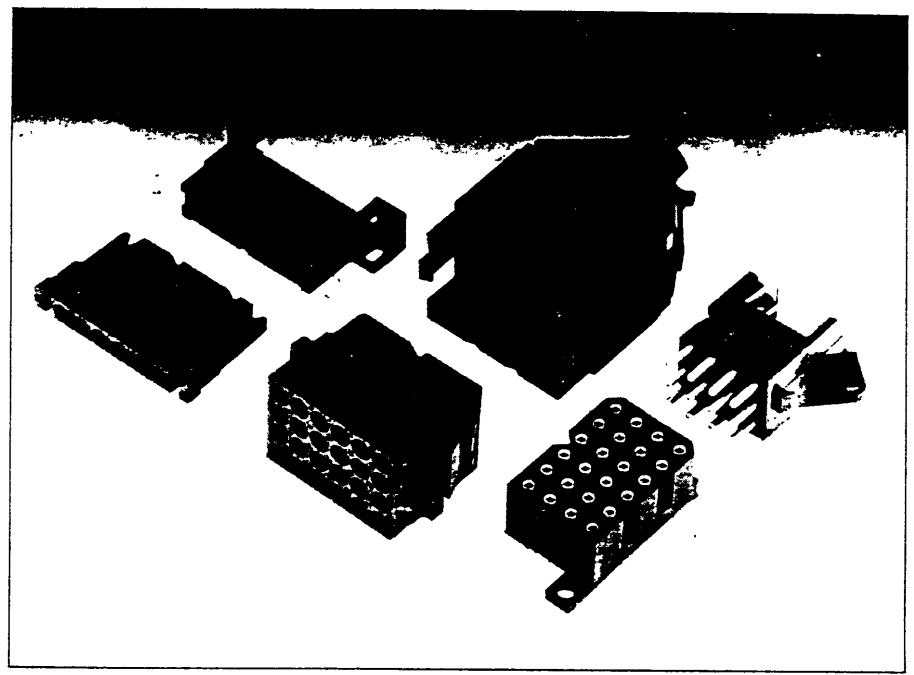
SMS-QIKMATE Connectors

## Description

The versatile SMS QIKMATE connectors offer economy to meet the constant demand for more cost-effective interconnection techniques. They are available as self mountable receptacles, plugs, boardmounts, P.C. pin headers and accessories.

## Features and benefits

- Self mountable receptacle with positive housing retention.
- Error-free mating with positive connector polarization.
- Plugs with retaining latches for positive locking.
- Plugs with pin protection skirt to prevent damage of male contacts.
- Boardmounts available with stamped and formed or solid machined contacts.



## Performance characteristics

|                               |                     |
|-------------------------------|---------------------|
| Operating temperature         | : -55 °C to +105 °C |
| Insulation resistance         | : 5000 MΩmin.       |
| Test potential                | : 2000 VAC          |
| Current rating boardmount     | : 5 Amp             |
| Contact resistance boardmount | : ≤ 6 mΩ            |
| Durability                    | : 500 cycles        |

## Construction

Plugs, receptacles, pin headers and accessories : Polyamide 6,6  
 P.C. Board Receptacle : Glass-reinforced thermoplastic  
 Contacts: High conductivity copper alloy  
 Plating boardmounts:  
 - No digit = std 0,4 μ Gold min over Nickel  
 - J = Gold flash over Nickel  
 - T = 3-5 μ Tin  
 - S6 = 0,75 μ Gold min selective over Nickel  
 - D70 = Gold flash over Nickel  
 - TK6 = Tin alloy preplated

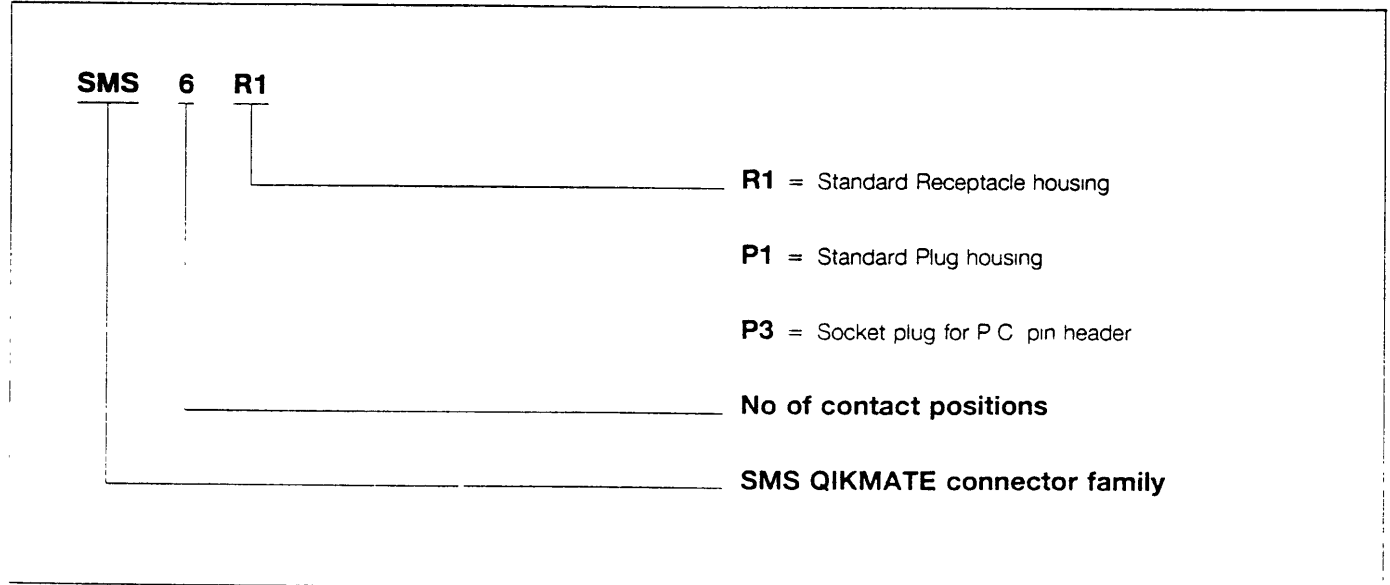
## Contact accommodation

SMS QIKMATE Plug and receptacle connectors accept TRIM TRIO crimp type removable snap-lock contacts.

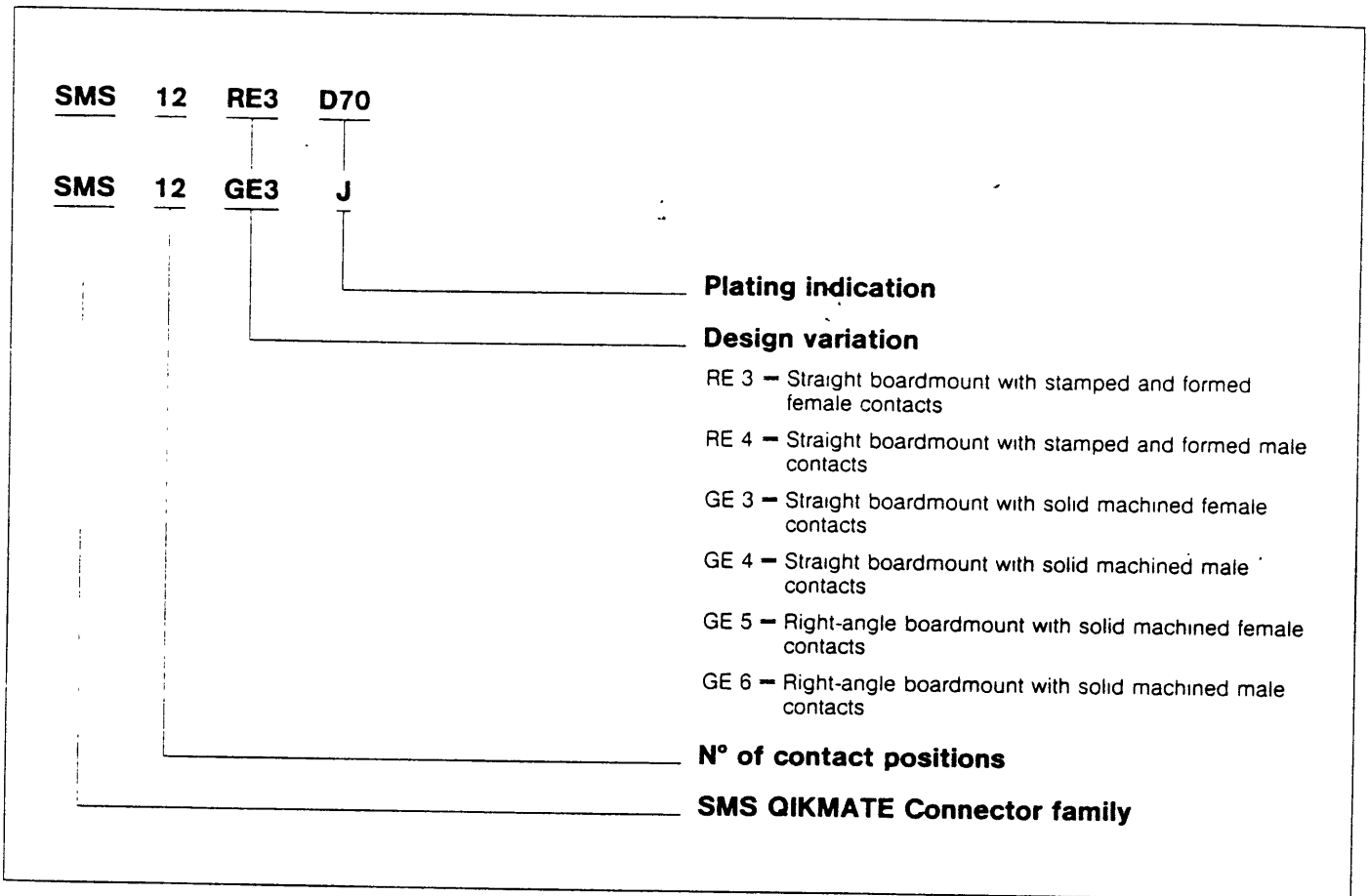
1. No. 16 machined contacts type RM / RC for wire sizes from 0,05 to 1,50 mm<sup>2</sup>.
2. Type RMDX / RCDX contacts for subminiature coaxial and twisted pair wires.
3. No. 16 stripfeed contacts type SM / SC for wire sizes from 0,05 to 1,50 mm<sup>2</sup> or for wire size AWG 16, 20 and 24.

- Contacts to be ordered separately, see datasheet No 2-110, 2-111, 2-112, 2-113, 2-114.  
 - Boardmounts have pre-assembled contacts.

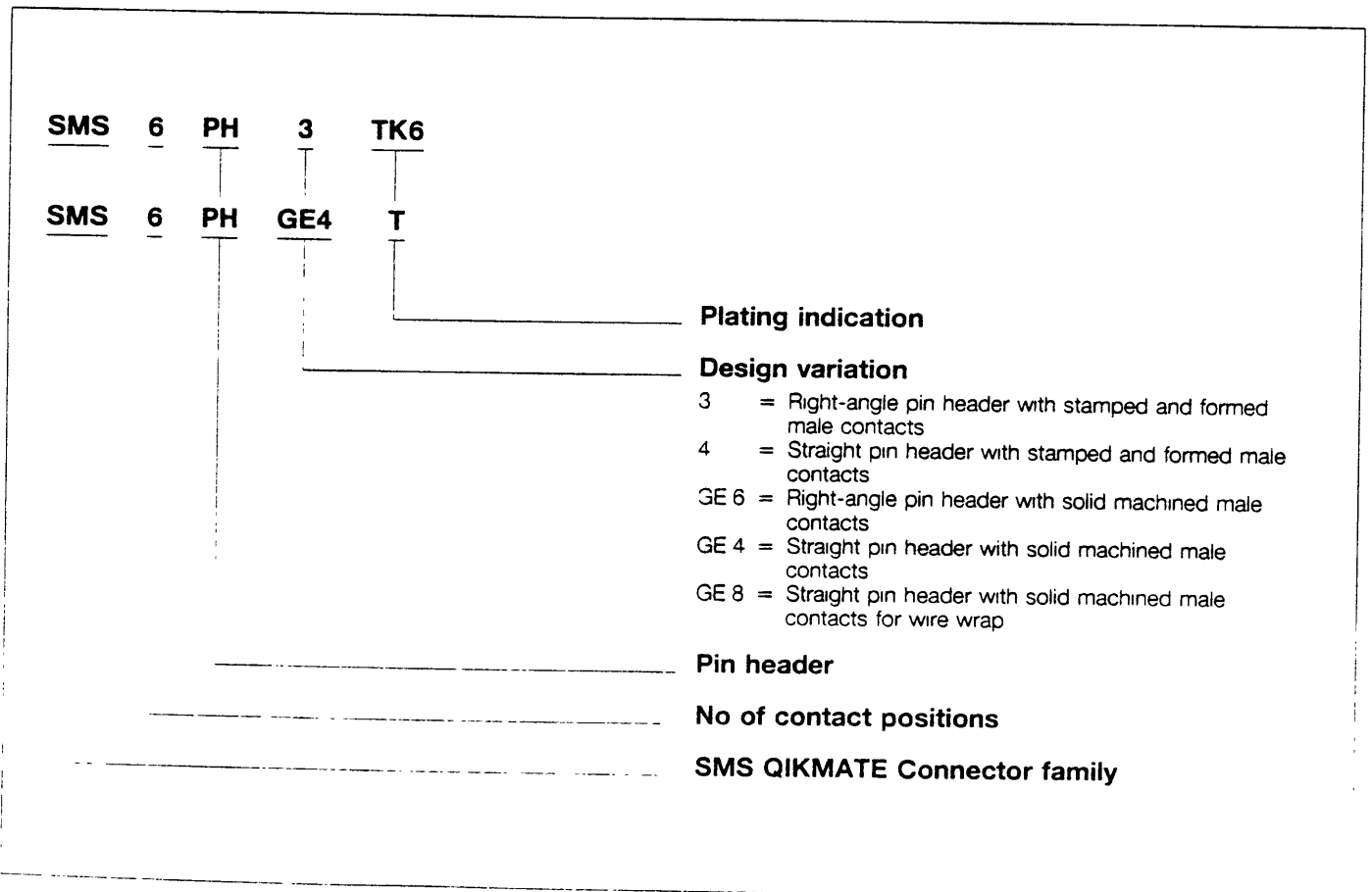
## How to order QIKMATE Plugs and Receptacles



## How to order QIKMATE Boardmounts straight and right-angle

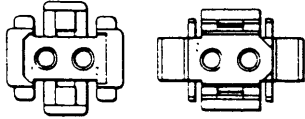


## How to order QIKMATE P.C. Pin Headers



**Contact Identification**

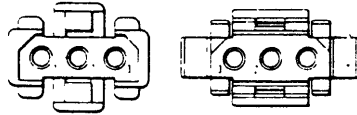
2 position



Plug

Receptacle

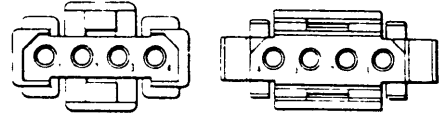
3 position



Plug

Receptacle

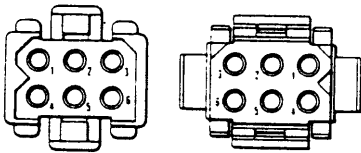
4 position



Plug

Receptacle

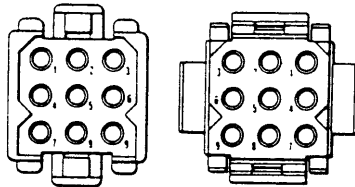
6 position



Plug

Receptacle

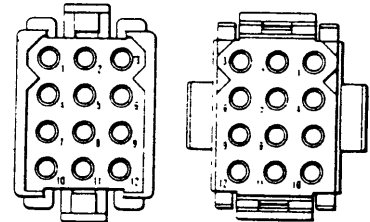
9 position



Plug

Receptacle

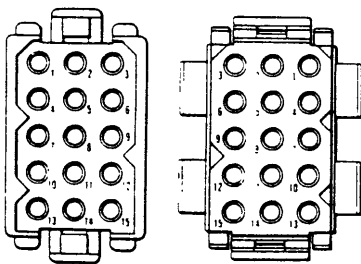
12 position



Plug

Receptacle

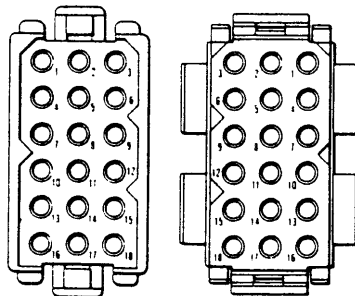
15 position



Plug

Receptacle

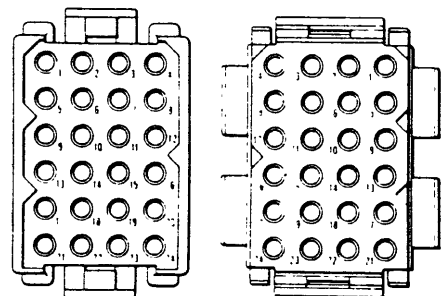
18 position



Plug

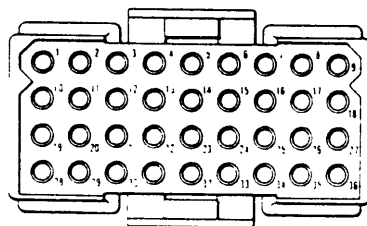
Receptacle

24 position

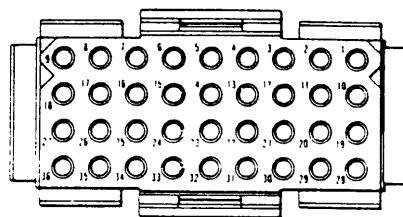


Plug

Receptacle



Plug

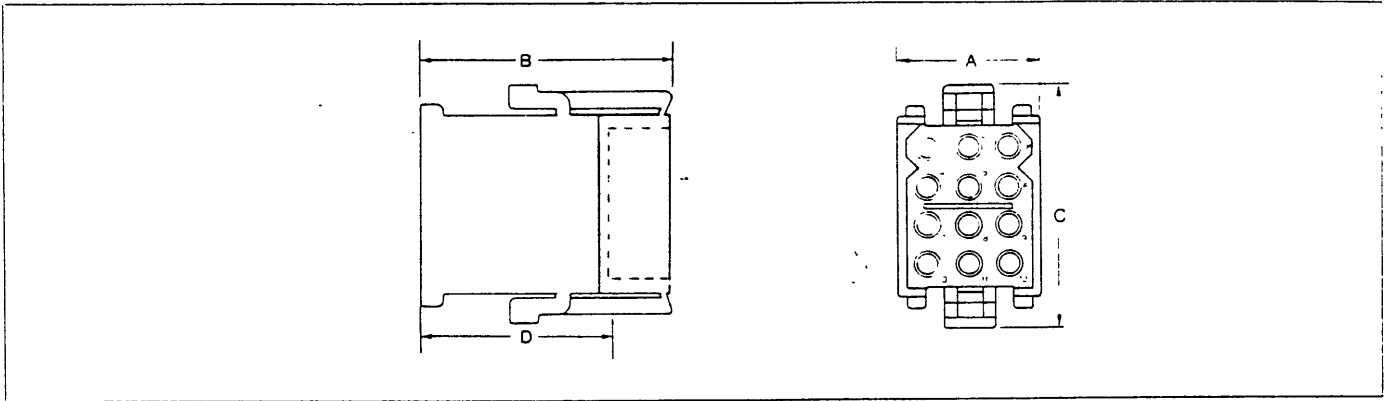


Receptacle

36 position

## Standard Connectors

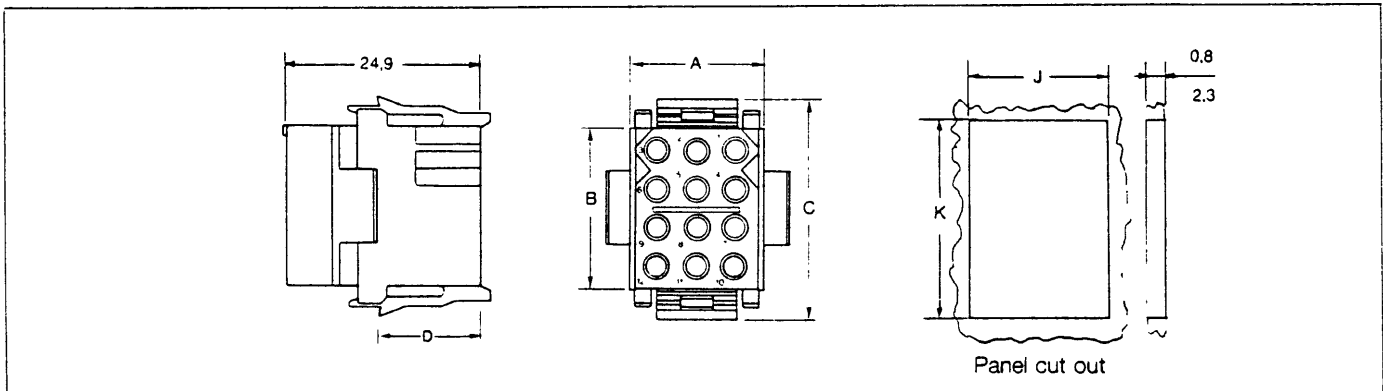
### Plugs SMS..P



| N° of positions | Catalogue number   | Dimensions in mm |      |        |      |
|-----------------|--------------------|------------------|------|--------|------|
|                 |                    | A                | B    | C max. | D    |
| 2               | SMS 2 P 1          | 15,0             | 32,8 | 17,8   | 24,9 |
| 3               | <b>SMS 3 P 1*</b>  | 18,5             | 32,8 | 17,8   | 24,9 |
| 4               | SMS 4 P 1          | 23,6             | 32,8 | 17,8   | 24,9 |
| 6               | <b>SMS 6 P 1*</b>  | 18,5             | 32,8 | 22,9   | 24,9 |
| 9               | SMS 9 P 1          | 18,5             | 32,8 | 27,9   | 24,9 |
| 12              | <b>SMS 12 P 1*</b> | 18,5             | 32,8 | 33,0   | 24,9 |
| 15              | SMS 15 P 1         | 18,5             | 32,8 | 38,1   | 24,9 |
| 18              | SMS 18 P 1         | 18,5             | 32,8 | 43,2   | 24,9 |
| 24              | <b>SMS 24 P 1*</b> | 23,6             | 32,8 | 43,2   | 24,9 |
| 36              | <b>SMS 36 P 1*</b> | 49,0             | 32,8 | 33,0   | 24,9 |

\* Standard item

### Receptacles SMS..R

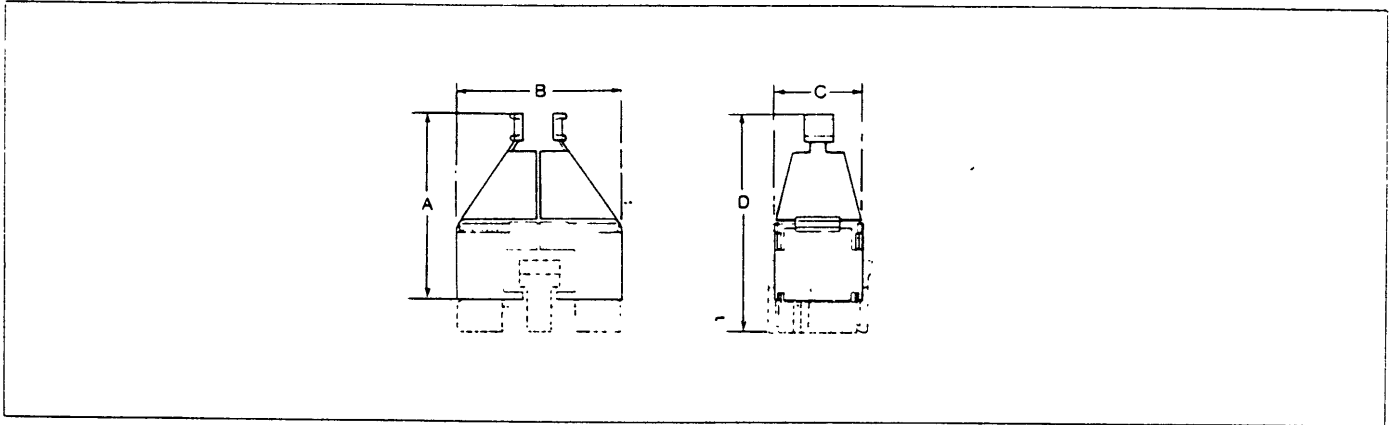


| N° of positions | Catalogue number   | Dimensions |      |        |      | Panel cut-out<br>Dimensions mm<br>± 0,13 mm |      |
|-----------------|--------------------|------------|------|--------|------|---|------|
|                 |                    | A          | B    | C max. | D    | J   | K    |
| 2               | SMS 2 R 1          | 10,9       | 5,8  | 15,2   | 13,2 | 11,4  | 11,6 |
| 3               | <b>SMS 3 R 1*</b>  | 16,0       | 5,8  | 15,2   | 13,2 | 16,5  | 11,6 |
| 4               | SMS 4 R 1          | 21,1       | 5,8  | 15,2   | 13,2 | 21,7  | 11,6 |
| 6               | <b>SMS 6 R 1*</b>  | 16,0       | 10,9 | 20,3   | 13,2 | 16,5  | 16,7 |
| 9               | SMS 9 R 1          | 16,0       | 16,0 | 25,4   | 13,2 | 16,5  | 21,6 |
| 12              | <b>SMS 12 R 1*</b> | 16,0       | 21,1 | 30,5   | 13,2 | 16,7  | 26,7 |
| 15              | SMS 15 R 1         | 16,0       | 26,2 | 35,6   | 13,2 | 16,7  | 31,8 |
| 18              | SMS 18 R 1         | 16,0       | 31,2 | 40,6   | 13,2 | 16,7  | 36,9 |
| 24              | <b>SMS 24 R 1*</b> | 21,1       | 31,2 | 40,6   | 13,2 | 21,7  | 36,9 |
| 36              | <b>SMS 36 R 1*</b> | 46,5       | 21,1 | 30,5   | 13,2 | 47,2  | 26,7 |

\* Standard item

## Accessories for standard Qikmate Connectors

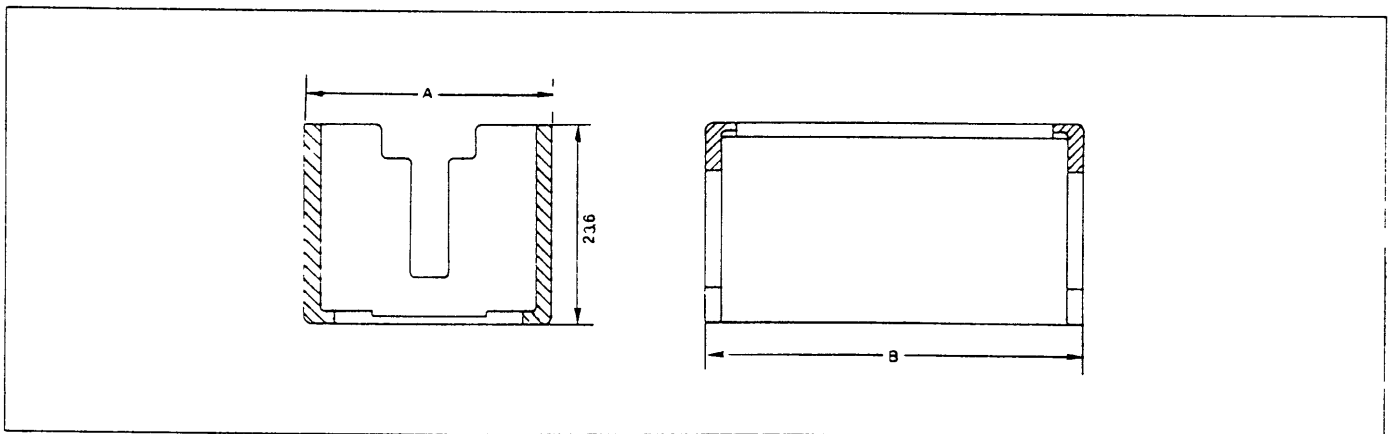
### Strain relief hood



| Qikmate contact positions | Catalogue number   | Wire bundle $\varnothing$ max mm | Recommended Unirap cable tie | Dimensions |      |      |          |
|---------------------------|--------------------|----------------------------------|------------------------------|------------|------|------|----------|
|                           |                    |                                  |                              | A          | B    | C    | D (max.) |
| 2                         | SMS 2 H 1          | 8,4                              | TF-4                         | 46,2       | 16,7 | 10,6 | 56,3     |
| 3                         | <b>SMS 3 H 1*</b>  | 8,4                              | TF-4                         | 46,2       | 19,3 | 10,6 | 56,3     |
| 4                         | SMS 4 H 1          | 9,9                              | TF-4                         | 46,2       | 24,3 | 10,6 | 56,3     |
| 6                         | <b>SMS 6 H 1*</b>  | 8,1                              | TF-4                         | 46,2       | 19,3 | 15,7 | 56,3     |
| 9                         | SMS 9 H 1          | 9,1                              | TF-5                         | 45,2       | 19,3 | 20,8 | 55,3     |
| 12                        | <b>SMS 12 H 1*</b> | 10,2                             | TF-5                         | 45,2       | 19,3 | 25,9 | 55,3     |
| 15                        | SMS 15 H 1         | 10,9                             | TF-5                         | 50,2       | 19,3 | 30,9 | 60,4     |
| 18                        | SMS 18 H 1         | 11,7                             | TF-5                         | 50,2       | 19,3 | 36,0 | 60,4     |
| 24                        | <b>SMS 24 H 1*</b> | 12,7                             | TF-5                         | 50,5       | 24,3 | 36,0 | 60,7     |
| 36                        | <b>SMS 36 H 1*</b> | 15,7                             | TF-5                         | 57,9       | 49,7 | 25,9 | 68,0     |

\* Standard item

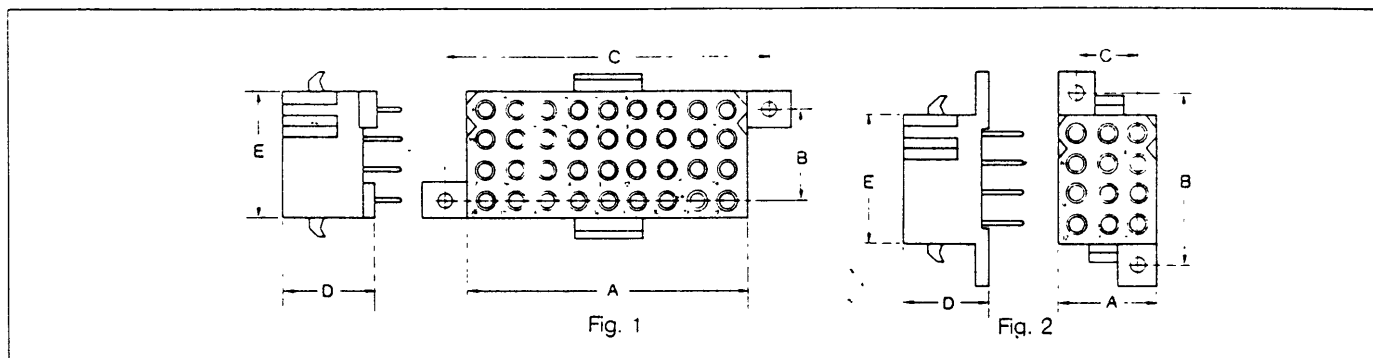
### Pin Protection shroud



| N° of contacts | Catalogue number | Dimensions in mm |      |
|----------------|------------------|------------------|------|
|                |                  | A                | B    |
| 2              | SMS 2 CSB1       | 19,8             | 18,8 |
| 3              | SMS 3 CSB1       | 23,4             | 18,8 |
| 4              | SMS 4 CSB1       | 28,4             | 18,8 |
| 6              | SMS 6 CSB1       | 23,4             | 23,9 |
| 9              | SMS 9 CSB1       | 23,4             | 29,0 |
| 12             | SMS 12 CSB1      | 23,4             | 34,0 |
| 15             | SMS 15 CSB1      | 23,4             | 39,1 |
| 18             | SMS 18 CSB1      | 23,4             | 44,2 |
| 24             | SMS 24 CSB1      | 28,4             | 44,2 |
| 36             | SMS 36 CSB1      | 54,1             | 34,0 |

## P.C. Board Receptacles

### Straight version



### Version with solid machined contacts

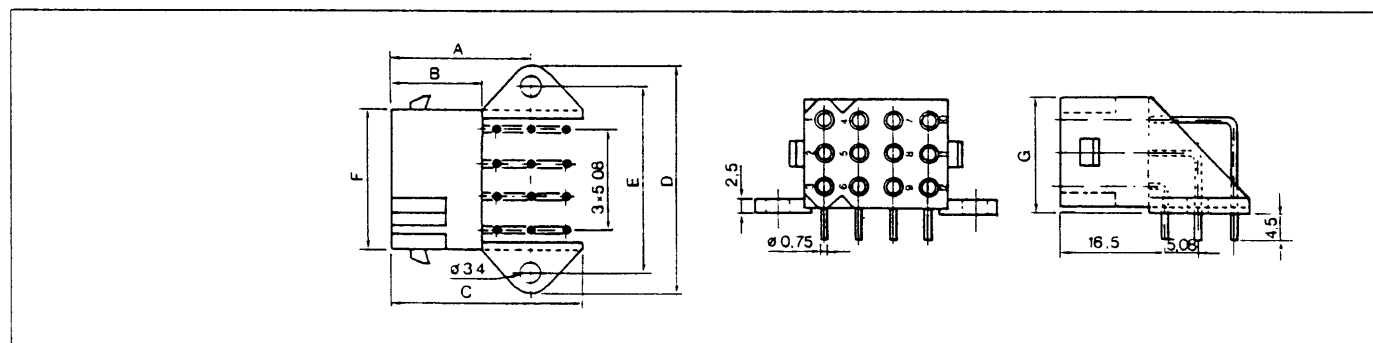
| N° of positions | Catalogue number     |                   | Fig. | Dimensions |      |      |      |      |
|-----------------|----------------------|-------------------|------|------------|------|------|------|------|
|                 | with socket contacts | with pin contacts |      | A          | B    | C    | D    | E    |
| 2               | SMS 2GE3             | SMS 2GE4          | 1    | 10,9       | —    | 19,1 | 13,2 | 5,8  |
| 3               | <b>SMS 3GE3*</b>     | <b>SMS 3GE4*</b>  | 2    | 16,0       | 14,0 | 10,2 | 13,2 | 5,8  |
| 4               | SMS 4GE3             | SMS 4GE4          | 2    | 21,1       | 14,0 | 15,2 | 13,2 | 5,8  |
| 6               | <b>SMS 6GE3*</b>     | <b>SMS 6GE4*</b>  | 2    | 16,0       | 19,0 | 10,2 | 13,2 | 10,9 |
| 12              | <b>SMS 12GE3*</b>    | <b>SMS 12GE4*</b> | 2    | 16,0       | 29,2 | 10,2 | 13,2 | 21,1 |
| 18              |                      | SMS 18GE4         | 1    | 16,0       | 39,4 | 10,2 | 13,2 | 31,2 |
| 24              | <b>SMS 24GE3*</b>    | <b>SMS 24GE4*</b> | 2    | 21,1       | 39,4 | 15,2 | 13,2 | 31,2 |
| 36              | <b>SMS 36GE3*</b>    | <b>SMS 36GE4*</b> | 1    | 46,5       | 15,2 | 54,6 | 13,2 | 21,2 |

\* Standard item

### Version with stamped and formed contacts

| N° of positions | Catalogue number     |                   | Dimensions |      |      |      |      |
|-----------------|----------------------|-------------------|------------|------|------|------|------|
|                 | with socket contacts | with pin contacts | A          | B    | C    | D    | E    |
| 2               | SMS 2RE3 TK6         | SMS 2RE4 TK6      | 10,9       | —    | 19,1 | 13,2 | 5,8  |
| 3               | SMS 3RE3 TK6         | SMS 3RE4 TK6      | 16,0       | 14,0 | 10,2 | 13,2 | 5,8  |
| 4               | SMS 4RE3 TK6         | SMS 4RE4 TK6      | 21,1       | 14,0 | 15,2 | 13,2 | 5,8  |
| 6               | SMS 6RE3 TK6         | SMS 6RE4 TK6      | 16,0       | 19,0 | 10,2 | 13,2 | 10,9 |
| 12              | SMS 12RE3 TK6        | SMS 12RE4 TK6     | 16,0       | 29,2 | 10,2 | 13,2 | 21,1 |
| 18              |                      | SMS 18RE4 TK6     | 16,0       | 39,4 | 10,2 | 13,2 | 31,2 |
| 24              | SMS 24RE3 TK6        | SMS 24RE4 TK6     | 21,1       | 39,4 | 15,2 | 13,2 | 31,2 |
| 36              | SMS 36RE3 TK6        | SMS 36RE4 TK6     | 46,5       | 15,2 | 54,6 | 13,2 | 21,2 |

### Right angle version

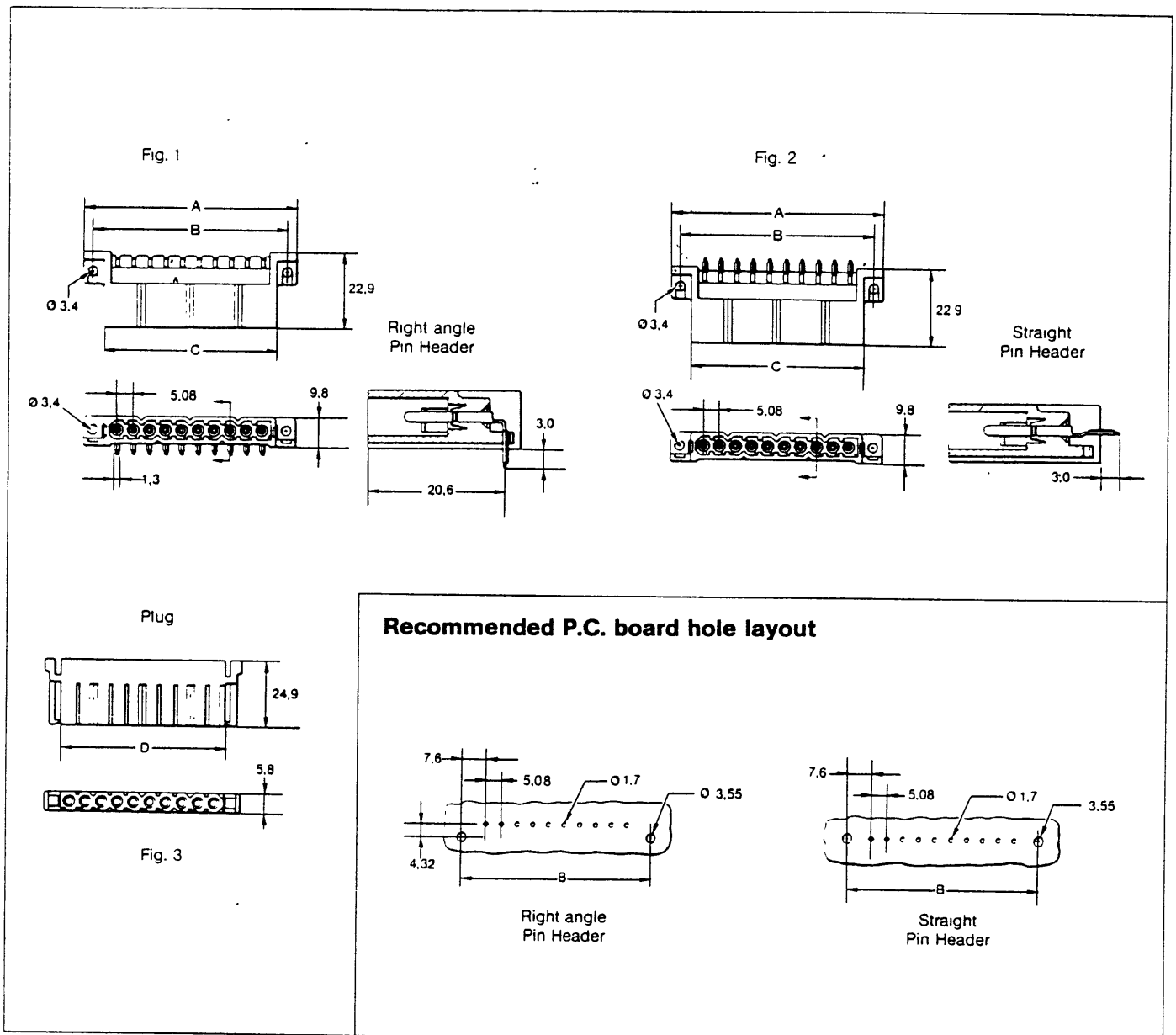


### Version with solid machined contacts

| N° of positions | Catalogue number     |                   | Dimensions |      |      |      |      |      |      |
|-----------------|----------------------|-------------------|------------|------|------|------|------|------|------|
|                 | with socket contacts | with pin contacts | A          | B    | C    | D    | E    | F    | G    |
| 3               | <b>SMS 3GE5*</b>     | <b>SMS 3GE6*</b>  | 16,5       | 14,5 | 20,5 | 30,2 | 24,2 | 16,2 | 6,8  |
| 6               | <b>SMS 6GE5*</b>     | <b>SMS 6GE6*</b>  | 19,0       | 14,5 | 24,5 | 30,2 | 24,2 | 16,2 | 11,7 |
| 12              | <b>SMS 12GE5*</b>    | <b>SMS 12GE6*</b> | 21,6       | 14,5 | 29,5 | 35,2 | 29,2 | 21,2 | 17,2 |

\* Standard item

## P.C. Pin Headers



### Version with solid machined contacts

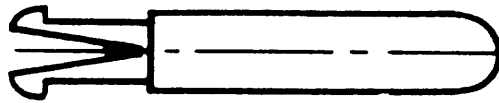
| N° of positions | Catalogue number   |                            |                         | Dimensions in mm |      |      |      |
|-----------------|--------------------|----------------------------|-------------------------|------------------|------|------|------|
|                 | Socket plug fig. 3 | Board Mount Header         |                         | A                | B    | C    | D    |
|                 |                    | Right Angle version Fig. 1 | Straight version Fig. 2 |                  |      |      |      |
| 3               | SMS 3P 3           | SMS 3PH GE6                | SMS 3PH GE4             | 31,2             | 25,4 | 19,3 | 16,0 |
| 4               | SMS 4P 3           | SMS 4PH GE6                | SMS 4PH GE4             | 36,3             | 30,4 | 24,4 | 21,1 |
| 6               | SMS 6P 3           | SMS 6PH GE6                | SMS 6PH GE4             | 46,5             | 40,6 | 34,5 | 31,2 |
| 9               | SMS 9P 3           | SMS 9PH GE6                | SMS 9PH GE4             | 61,7             | 55,9 | 49,8 | 46,5 |
| 10              | SMS 10P 3          | SMS 10PH GE6               | SMS 10PH GE4            | 66,8             | 61,0 | 54,9 | 51,6 |

### Version with stamped and formed contacts

| N° of positions | Catalogue number   |                            |                         | Dimensions in mm |      |      |      |
|-----------------|--------------------|----------------------------|-------------------------|------------------|------|------|------|
|                 | Socket plug fig. 3 | Board Mount Header         |                         | A                | B    | C    | D    |
|                 |                    | Right Angle version Fig. 1 | Straight version Fig. 2 |                  |      |      |      |
| 3               | SMS 3P 3           | SMS 3PH 3TK6               | SMS 3PH 4TK6            | 31,2             | 25,4 | 19,3 | 16,0 |
| 4               | SMS 4P 3           | SMS 4PH 3TK6               | SMS 4PH 4TK6            | 36,3             | 30,4 | 24,4 | 21,1 |
| 6               | SMS 6P 3           | SMS 6PH 3TK6               | SMS 6PH 4TK6            | 46,5             | 40,6 | 34,5 | 31,2 |
| 9               | SMS 9P 3           | SMS 9PH 3TK6               | SMS 9PH 4TK6            | 61,7             | 55,9 | 49,8 | 46,5 |
| 10              | SMS 10P 3          | SMS 10PH 3TK6              | SMS 10PH 4TK6           | 66,8             | 61,0 | 54,9 | 51,6 |

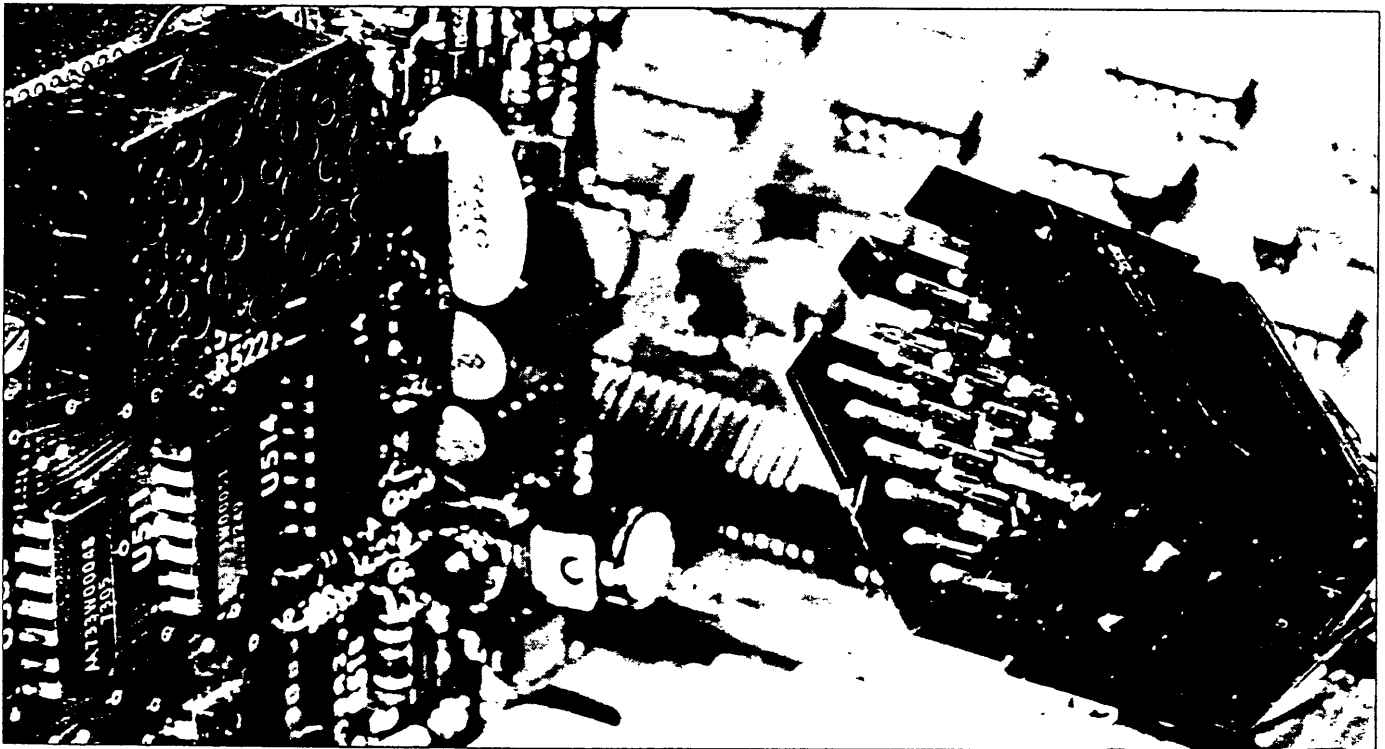
## Accessories

### Discrimination pins



These take the form of a plastic «contact» which can be inserted into an unfilled contact hole. When the discriminating pin is fitted, the Trim-Trio connector assembly will only mate with an assembly which has a vacant contact hole at the corresponding contact position. When ordering, please quote catalogue number: SMSPKEO.

## Applications



The list of QIKMATE applications is endless — from radio and TV to domestic appliances. Many users have already found that the qualities of QIKMATE connectors are ideal — wherever there is a need for reliability at a reasonable price.

### Sales and Manufacturing facilities in:

|                     |                         |
|---------------------|-------------------------|
| Baar/CH, Mechelen,  | Stockholm, Waddinxveen, |
| Torino, Paris,      | Barcelona, Norwalk/Ct., |
| Steinenbronn/Stgt., | Toronto, Tokyo,         |
| St. Albans/Herts,   | São Paulo, Mexico City, |
|                     | Hong Kong, Sydney       |

Burndy reserves the right to alter specifications of the equipment described in this brochure without prior notice.

Copyright © 1987 Burndy Corporation. All rights reserved.