

# SF1001G-SF1008G

10.0AMP. Glass Passivated Super Fast Rectifiers

## TO-220AB

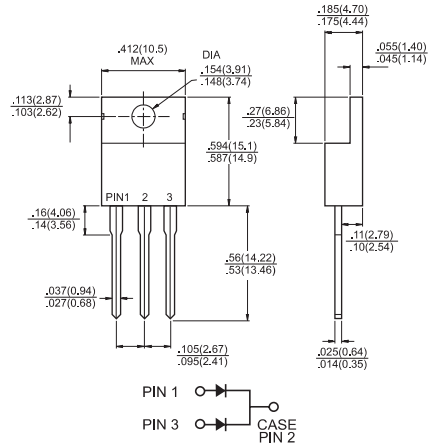


### Features

- ✧ High efficiency, low VF
- ✧ High current capability
- ✧ High reliability
- ✧ High surge current capability
- ✧ Low power loss.
- ✧ For use in low voltage, high frequency inverter, free wheeling, and polarity protection application

### Mechanical Data

- ✧ Case: TO-220AB Molded plastic
- ✧ Epoxy: UL 94V-0 rate flame retardant
- ✧ Polarity: As marked
- ✧ High temperature soldering guaranteed:  
260°C/10 seconds .16" (4.06mm) from case.
- ✧ Weight: 2.24 grams



Dimensions in inches and (millimeters)

### Maximum Ratings and Electrical Characteristics

Rating at 25 °C ambient temperature unless otherwise specified.

Single phase, half wave, 60 Hz, resistive or inductive load.

For capacitive load, derate current by 20%

Type Number	Symbol	SF 1001G	SF 1002G	SF 1003G	SF 1004G	SF 1005G	SF 1006G	SF 1007G	SF 1008G	Units
Maximum Recurrent Peak Reverse Voltage	$V_{RRM}$	50	100	150	200	300	400	500	600	V
Maximum RMS Voltage	$V_{RMS}$	35	70	105	140	210	280	350	420	V
Maximum DC Blocking Voltage	$V_{DC}$	50	100	150	200	300	400	500	600	V
Maximum Average Forward Rectified Current .375 (9.5mm) Lead Length @ $T_C = 100^\circ C$	$I_{(AV)}$	10.0								A
Peak Forward Surge Current, 8.3 ms Single Half Sine-wave Superimposed on Rated Load (JEDEC method)	$I_{FSM}$	125								A
Maximum Instantaneous Forward Voltage @ 5.0A	$V_F$	0.975			1.3		1.7			V
Maximum DC Reverse Current @ $T_A=25^\circ C$ at Rated DC Blocking Voltage @ $T_A=100^\circ C$	$I_R$	10.0 400								$\mu A$ $\mu A$
Maximum Reverse Recovery Time (Note 1)	$T_{rr}$	35								nS
Typical Junction Capacitance (Note 2)	$C_j$	70				50				pF
Typical Thermal Resistance (Note 3)	$R_{\theta JC}$	3.5								$^\circ C/W$
Operating Temperature Range	$T_J$	-65 to +150								$^\circ C$
Storage Temperature Range	$T_{STG}$	-65 to +150								$^\circ C$

- Notes: 1. Reverse Recovery Test Conditions:  $I_F=0.5A$ ,  $I_R=1.0A$ ,  $I_{RR}=0.25A$   
 2. Measured at 1 MHz and Applied Reverse Voltage of 4.0 V D.C.  
 3. Mounted on Heatsink Size of 2" x 3" x 0.25" Al-plate.

# SF1001G-SF1008G

10.0AMP. Glass Passivated Super Fast Rectifiers

## RATINGS AND CHARACTERISTIC CURVES (SF1001G THRU SF1008G)

FIG.1- MAXIMUM FORWARD CURRENT DERATING CURVE

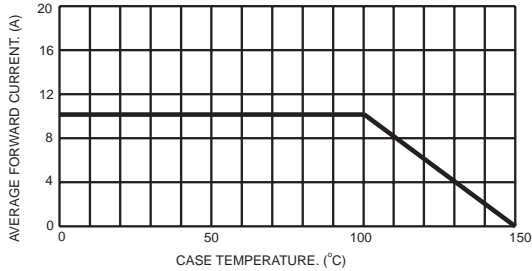


FIG.2- TYPICAL REVERSE CHARACTERISTICS

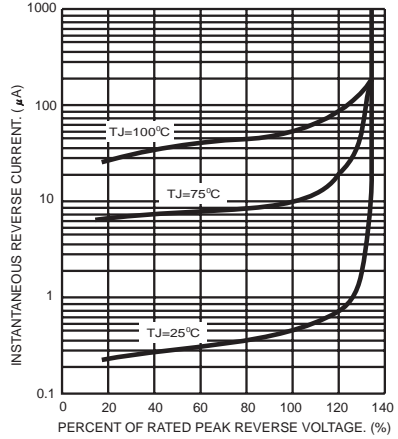


FIG.3- MAXIMUM NON-REPETITIVE FORWARD SURGE CURRENT PER LEG

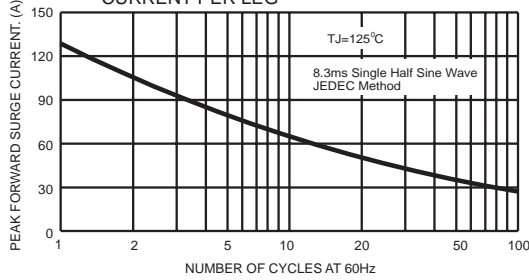


FIG.5- TYPICAL FORWARD CHARACTERISTICS PER LEG

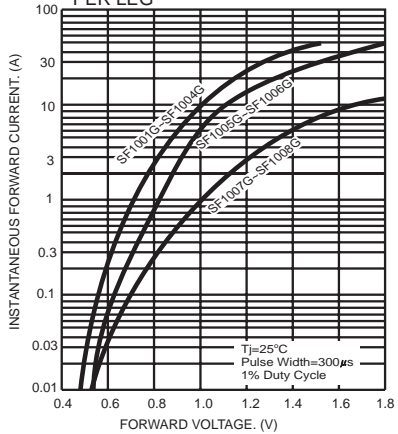


FIG.4- TYPICAL JUNCTION CAPACITANCE PER LEG

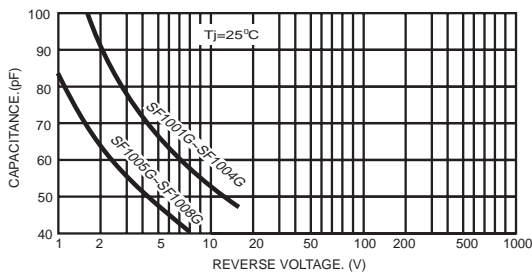
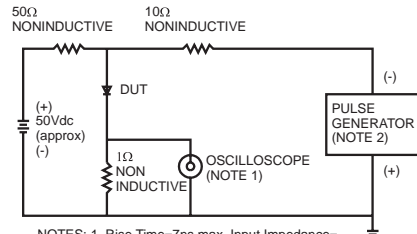


FIG.6- REVERSE RECOVERY TIME CHARACTERISTIC AND TEST CIRCUIT DIAGRAM



NOTES: 1. Rise Time=7ns max. Input Impedance=1 megohm 22pf  
2. Rise Time=10ns max. Source Impedance=50 ohms

