



Solid State Devices, Inc.

14701 Firestone Blvd * La Mirada, Ca 90638
 Phone: (562) 404-4474 * Fax: (562) 404-1773
 ssdi@ssdi-power.com * www.ssdi-power.com

**SDR1D
 thru
 SDR1N**

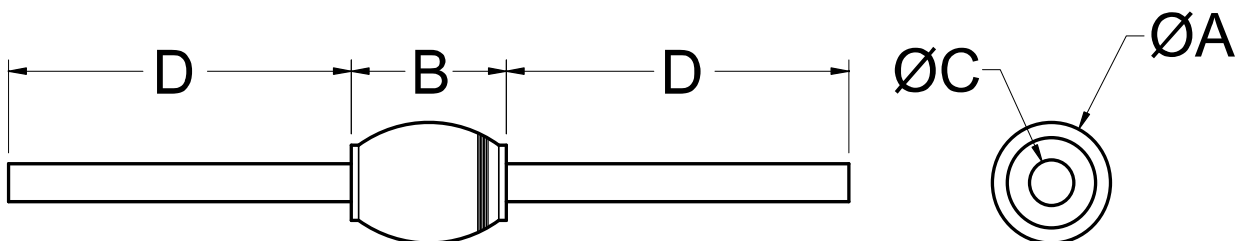
ELECTRICAL CHARACTERISTICS ^{3/}

CHARACTERISTICS		SYMBOL	VALUE	UNIT
Instantaneous Forward Voltage Drop ($I_F = 1\text{A dc}$, 300- 500 μs Pulse, $T_A = 25^\circ\text{C}$)	SDR1D thru SDR1J	V_{F1}	1.70	Vdc
	SDR1K thru SDR1N		1.90	
Instantaneous Forward Voltage Drop ($I_F = 1\text{A dc}$, 300- 500 μs Pulse, $T_A = -55^\circ\text{C}$)	SDR1D thru SDR1J	V_{F2}	2.10	Vdc
	SDR1K thru SDR1N		2.30	
Maximum Reverse Leakage Current (Rated V_R , 300 μs Pulse Minimum , $T_A = 25^\circ\text{C}$)		I_{R1}	5	μA
Maximum Reverse Leakage Current (Rated V_R , 300 μs Pulse Minimum , $T_A = 100^\circ\text{C}$)		I_{R2}	500	μA
Junction Capacitance ($V_R = 10\text{Vdc}$, $T_A = 25^\circ\text{C}$, $f = 1\text{MHz}$)		C_J	24	pf
Maximum Reverse Recovery Time ^{4/}	SDR1D thru SDR1J	t_{rr}	50	ns
	SDR1K		60	
	SDR1M		70	
	SDR1N		80	

Axial Leaded Case Outline ^{5/}:

DIMENSIONS

DIM.	MIN.	MAX.
A	---	.150"
B	---	.190"
C	.027"	.033"
D	.95"	---



NOTES:

- 1/** For Ordering Information, Price, and Availability- Contact Factory.
- 2/** Screened to MIL-PRF-19500.
- 3/** Unless Otherwise Specified, All Electrical Characteristics @25°C.

- 4/** Recovery Conditions: $I_F = 0.5\text{ Amp}$, $I_R = 1.0\text{ Amp}$, I_{RR} to .25 Amp.
- 5/** For information on operating curves, contact factory.

NOTE: All specifications are subject to change without notification. SCD's for these devices should be reviewed by SSDI prior to release.

DATA SHEET #: RU0005F

DOC