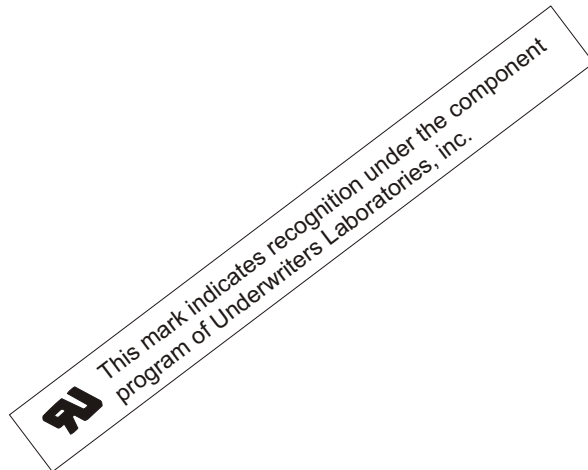
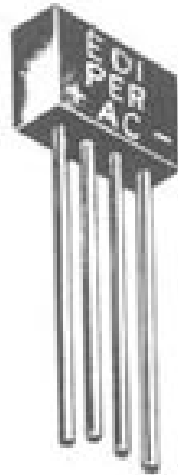




PER

**FAST RECOVERY
SINGLE-PHASE FULL-WAVE BRIDGE
4.0 AMPERES FOR P.C. BOARD MOUNTING**



PRV/leg	50V	100V	200V	400V	600V	800V	1000V
Type No.	PER05	PER10	PER20	PER40	PER60	PER80	PER100

**ELECTRICAL CHARACTERISTICS PER LEG
(at T_A=25 °C Unless Otherwise Specified)**

Max. Reverse Recovery , T _{rr} (Fig.3)	200	Nano Sec.
Max. Forward Voltage Drop, V _F =1.3 V @ I _F =	2.0	Amp
Max. DC Reverse Current @ PRV and 25°C, I _R	5	µA
Max. Peak Surge Current, I _{FSM} (8.3ms)(Fig.2)	100	Amp
Ambient Operating Temperature Range, T _A	-55 to +150	°C
Storage Temperature Range, T _{STG}	-55 to +150	°C
Thermal Resistance (Total Bridge), R _{θj-c}	7.0typ.	°C/W

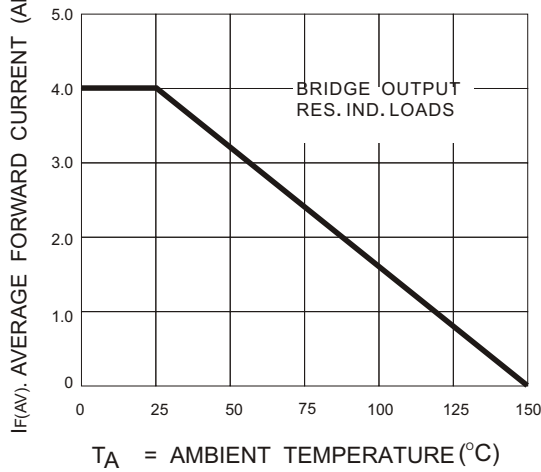
NOTE:

Maximum lead and terminal temperature for soldering, 3/8 inch from case, 5 seconds at 250°C.

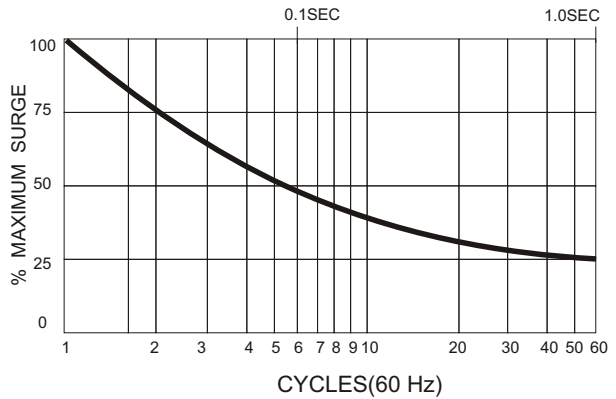
EDI reserves the right to change these specifications at any time without notice.

PER

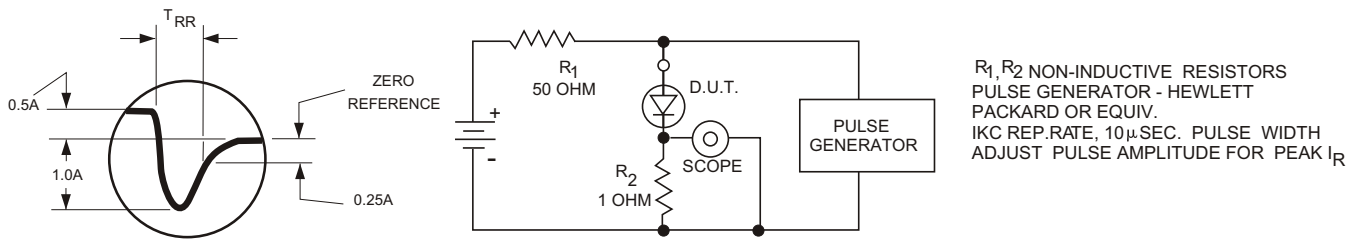
**FIG.1
CURRENT DERATING**



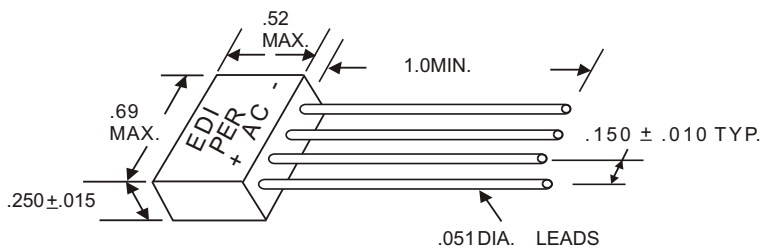
**FIG.2
NON-REPETITIVE SURGE CURRENT**



**FIG.3
TEST CIRCUIT**



CASE STYLE FOR PER



All dimensions in inches

ELECTRONIC DEVICES, INC. DESIGNERS AND MANUFACTURERS OF SOLID STATE DEVICES SINCE 1951.

21 GRAY OAKS AVENUE * YONKERS, NEW YORK 10710 914-965-4400 * FAX 914-965-5531 * 1-800-678-0828

e-mail: sales@edidiodes.com * website: <http://www.edidiodes.com>