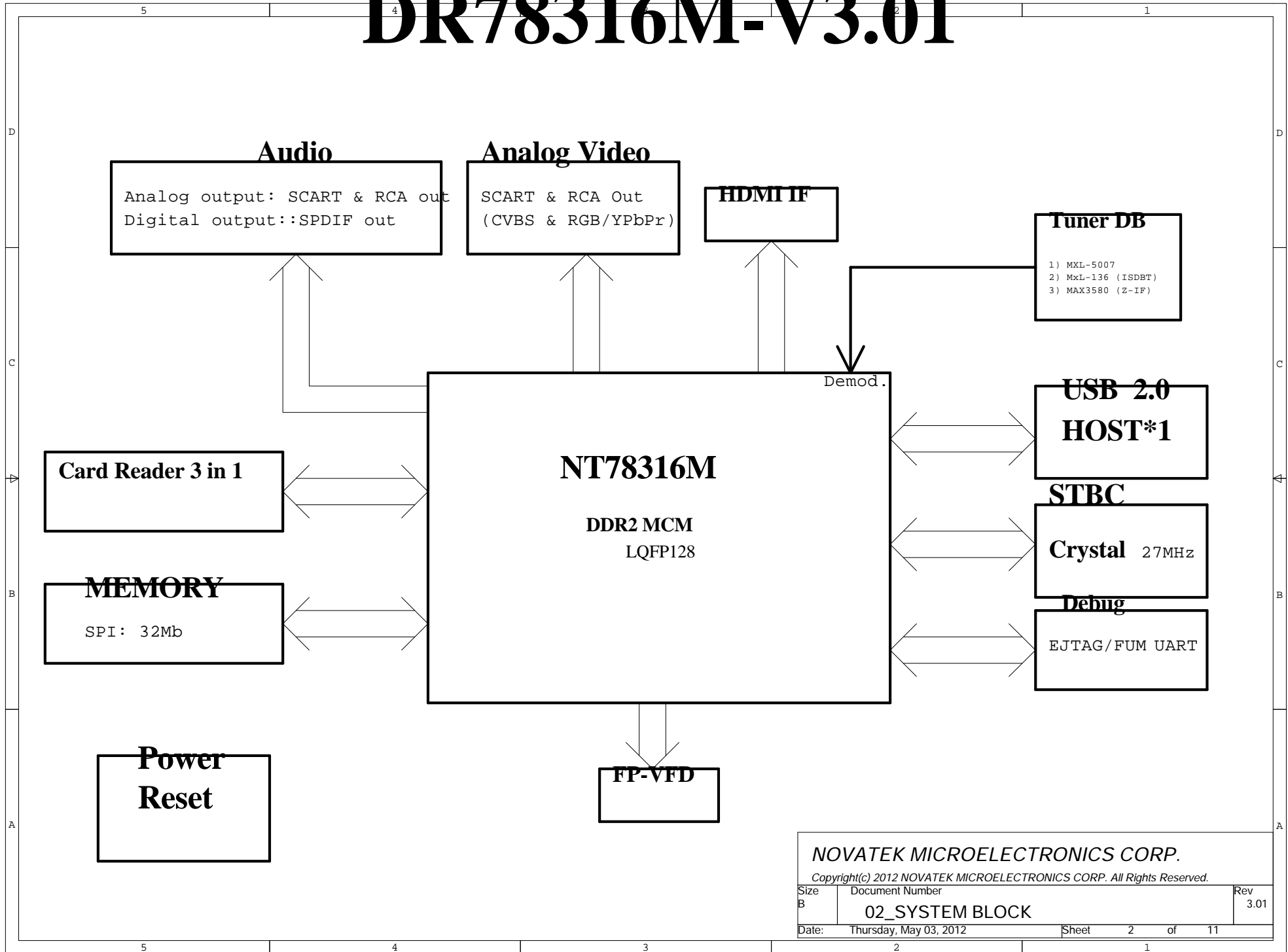


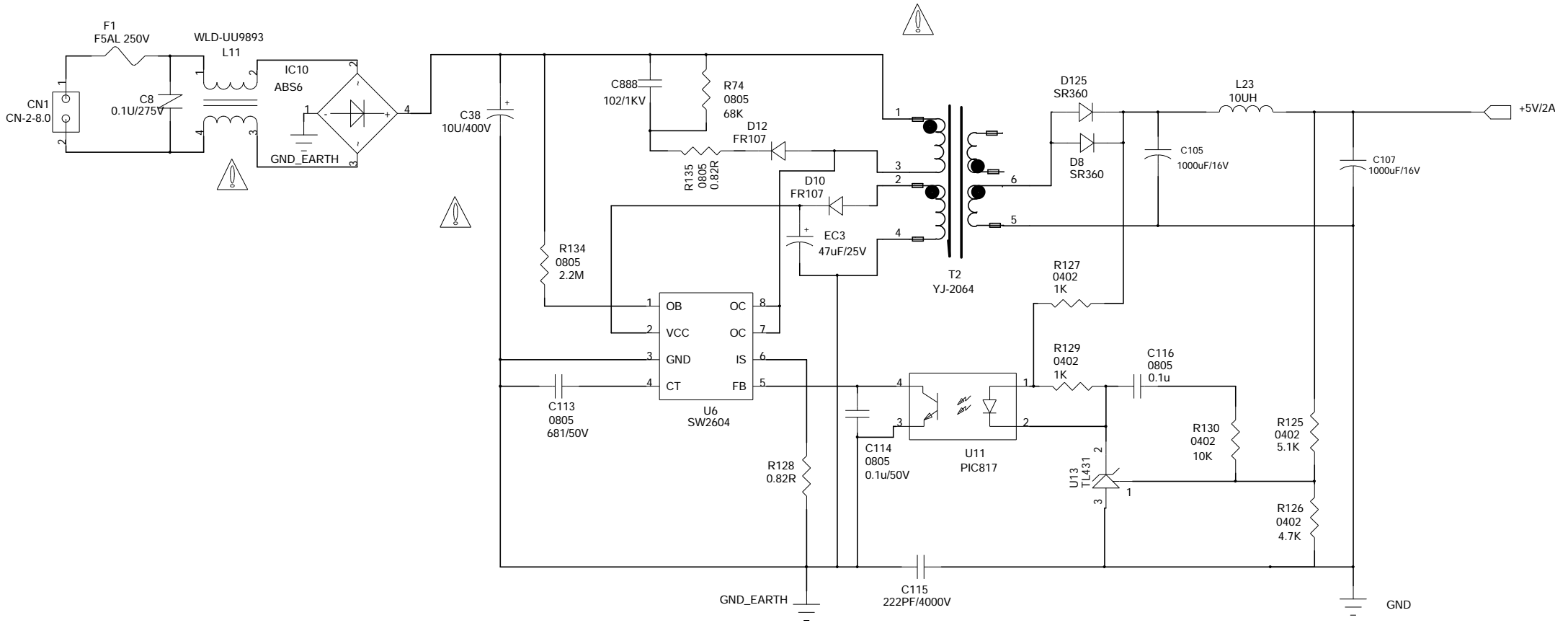
DR78316M-V3.01

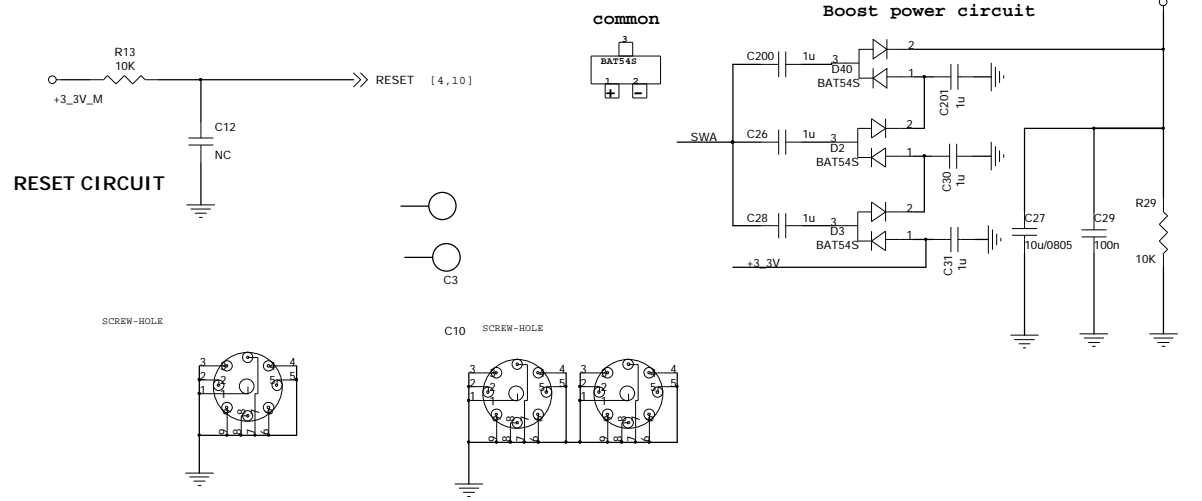
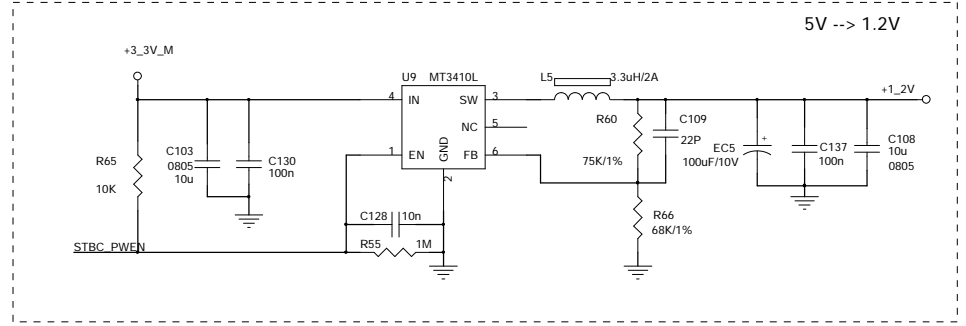
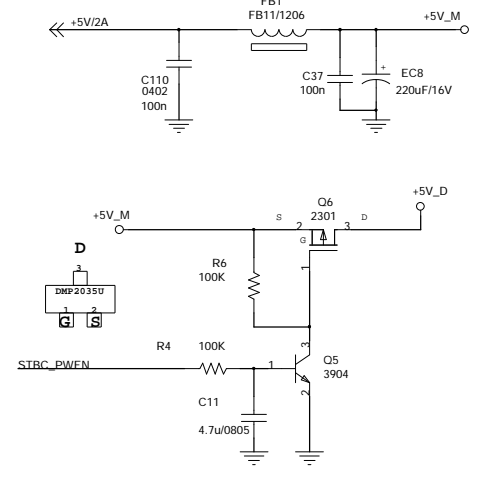
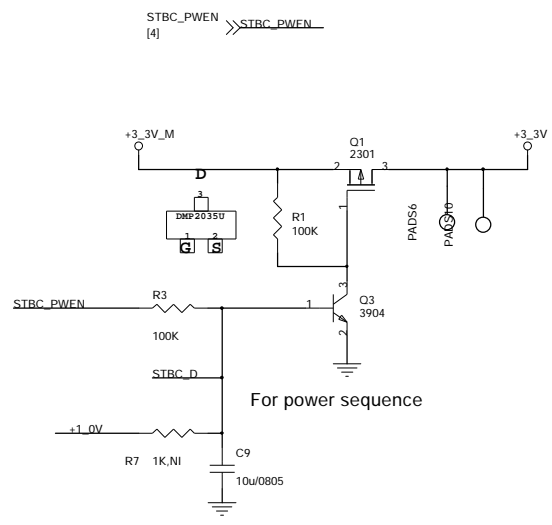
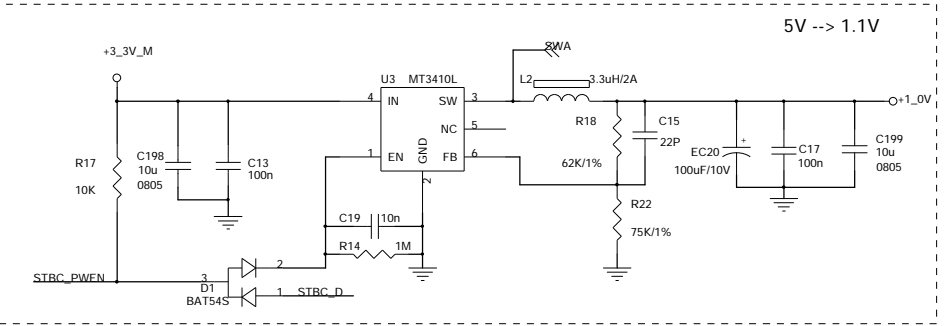
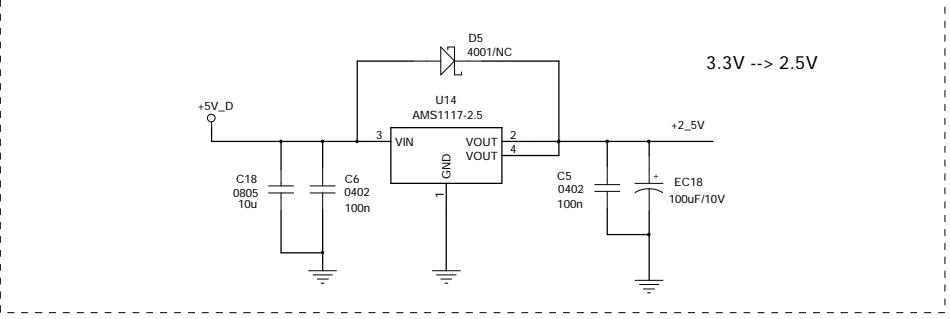
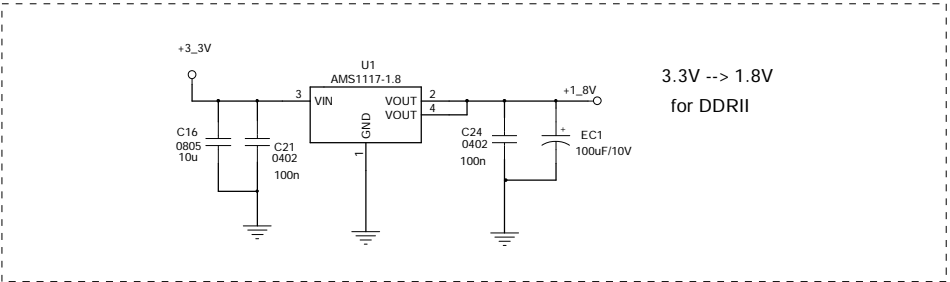
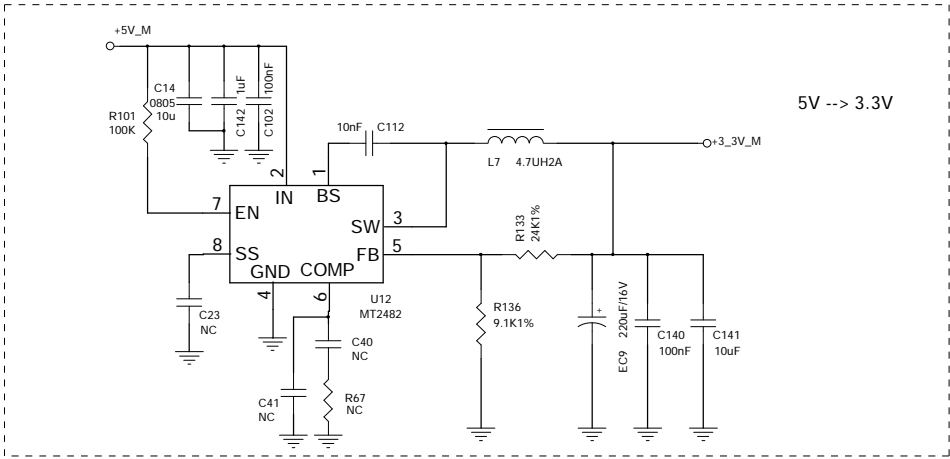


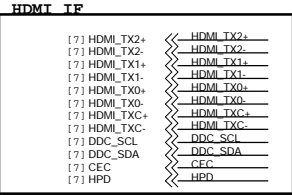
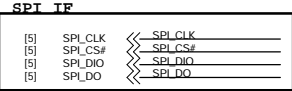
NOVATEK MICROELECTRONICS CORP.

Copyright(c) 2012 NOVATEK MICROELECTRONICS CORP. All Rights Reserved.

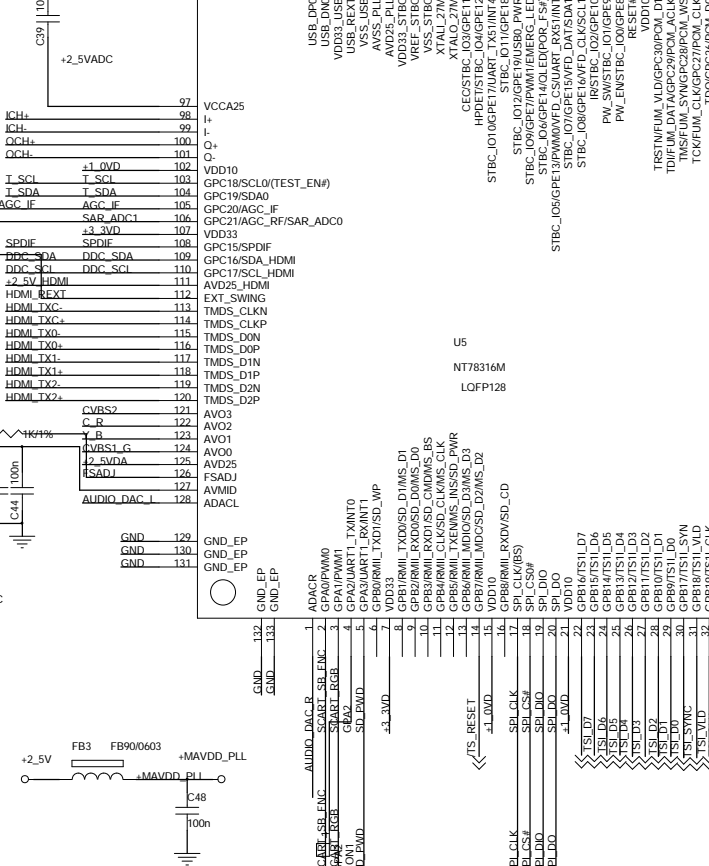
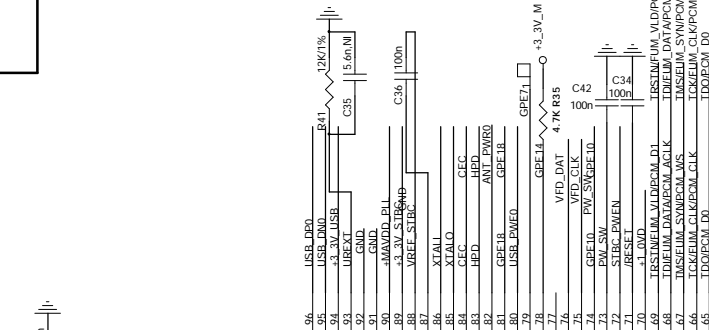
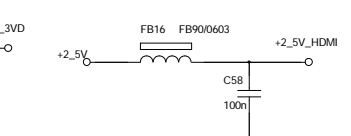
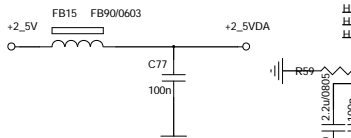
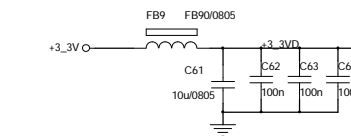
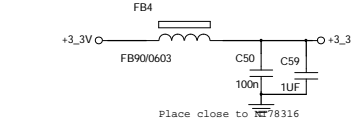
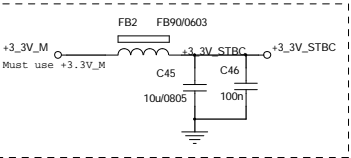
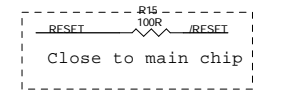
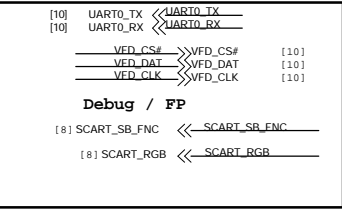
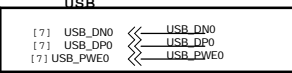
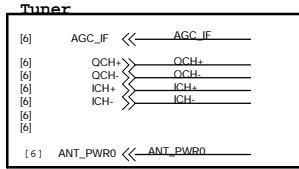
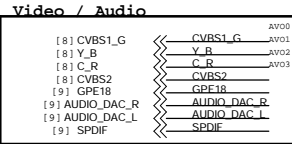
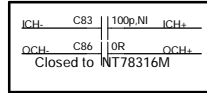
Size B	Document Number 02_SYSTEM BLOCK	Rev 3.01
Date: Thursday, May 03, 2012	Sheet 2	of 11





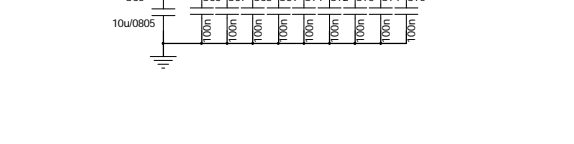
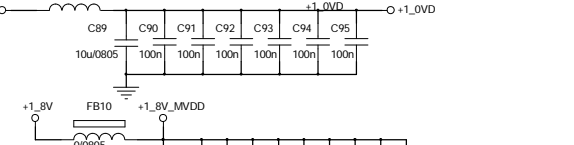
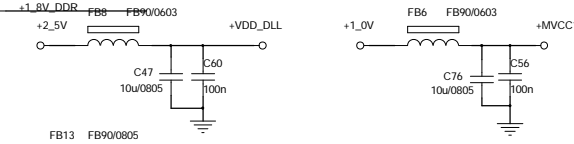
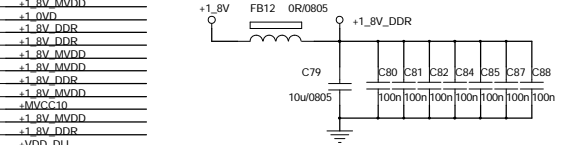
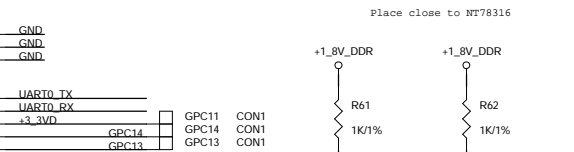
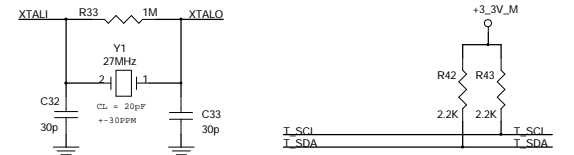


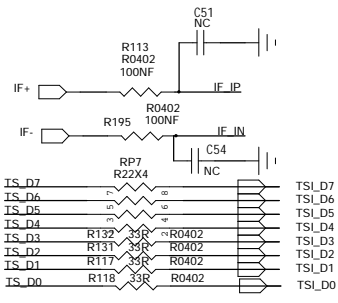
NT78316M can support Zero-IF input.
If Low/Direct IF is used, please keep
the other channel always OPEN.



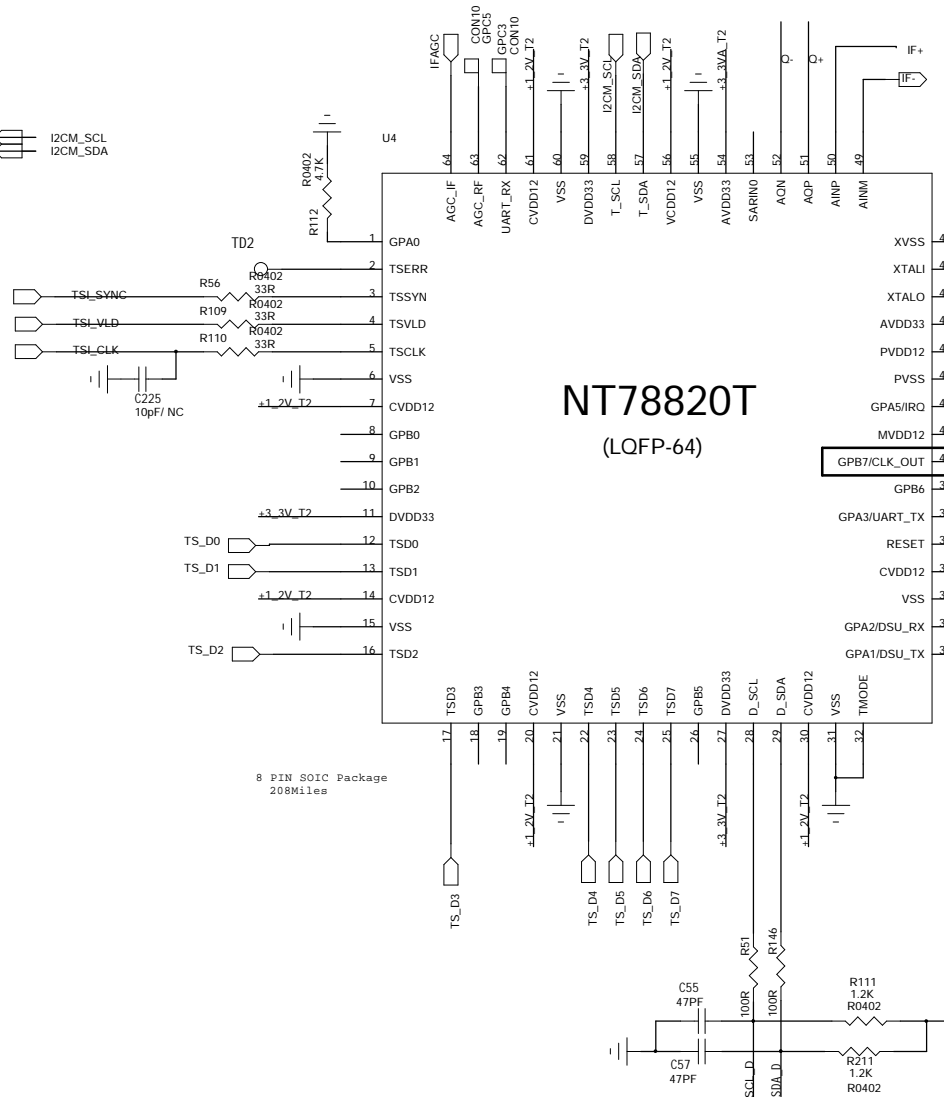
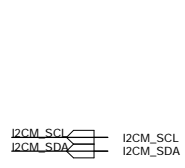
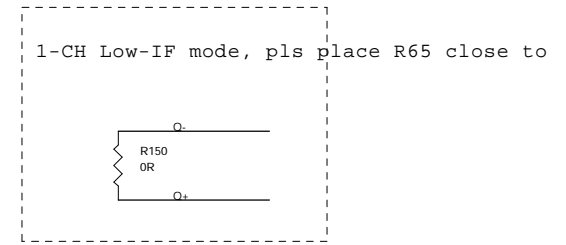
Power On Configuration(POC) Setting

Pin	Value	Defintion	Default
(GPA4)	1	Boot from ROM	V
	0	Boot from SPT	
(GPE14)	1	Normal power-on reset (250ms)	V
	0	Fast reset mode for test	
(GPC18)	1	Normal run	V
	0	Test mode enable	



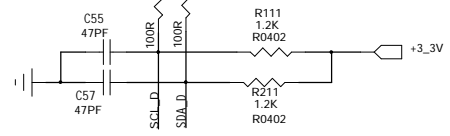
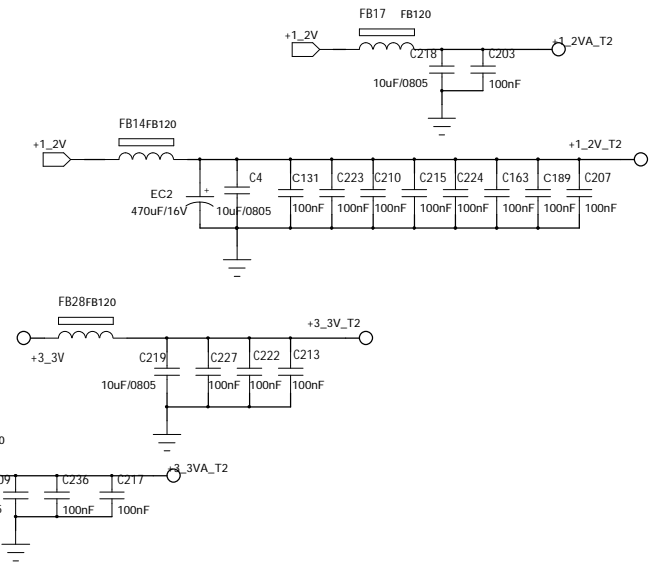


BPF Reserved



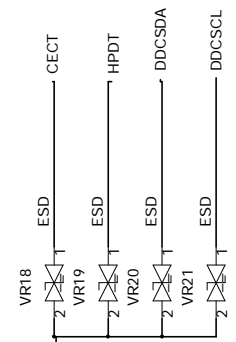
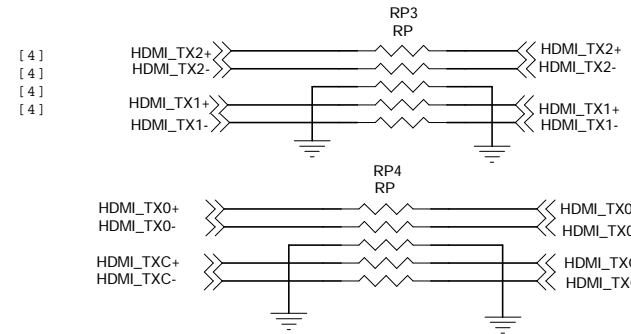
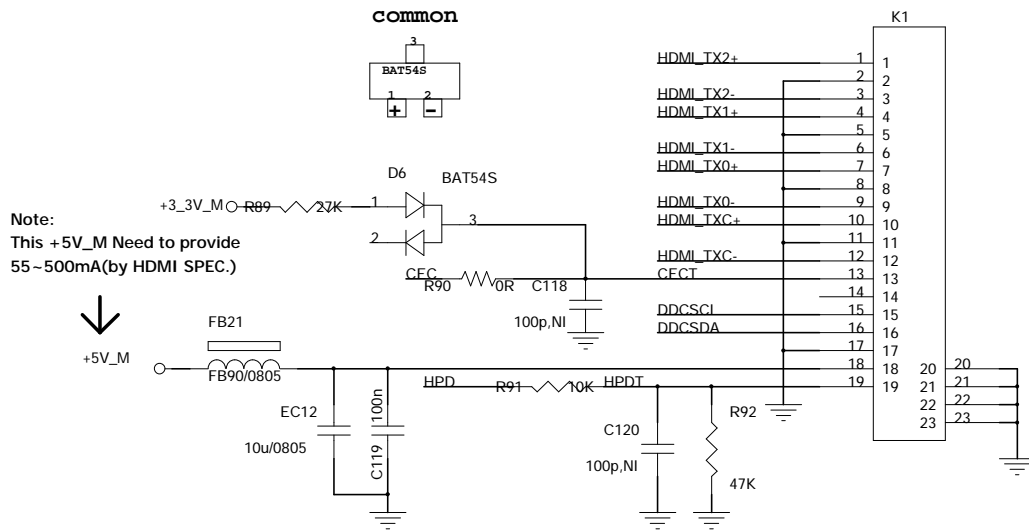
NT78820T
(LQFP-64)

8 PIN SOIC Package
208Miles



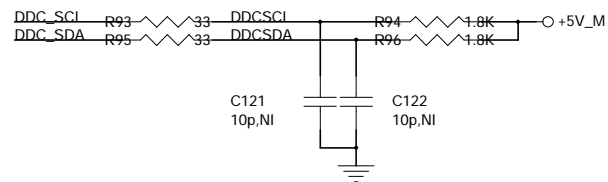
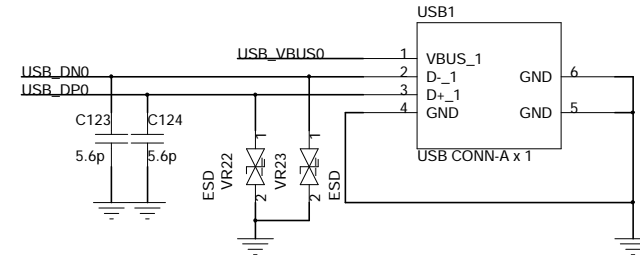
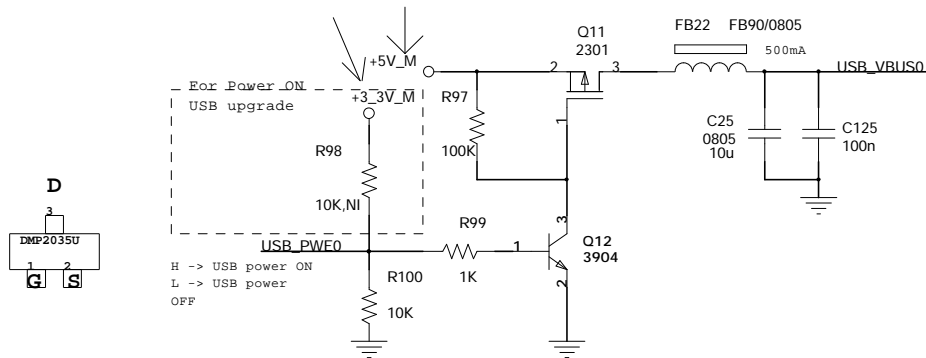


HDMI IF



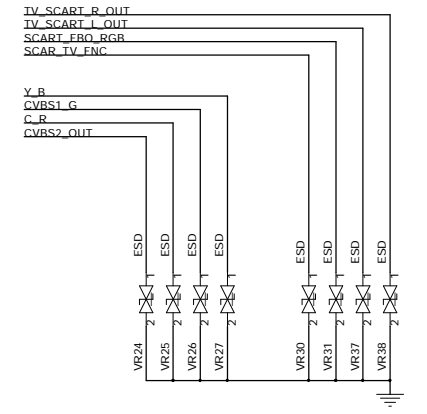
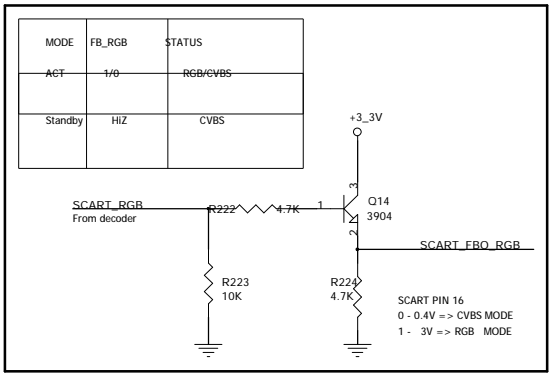
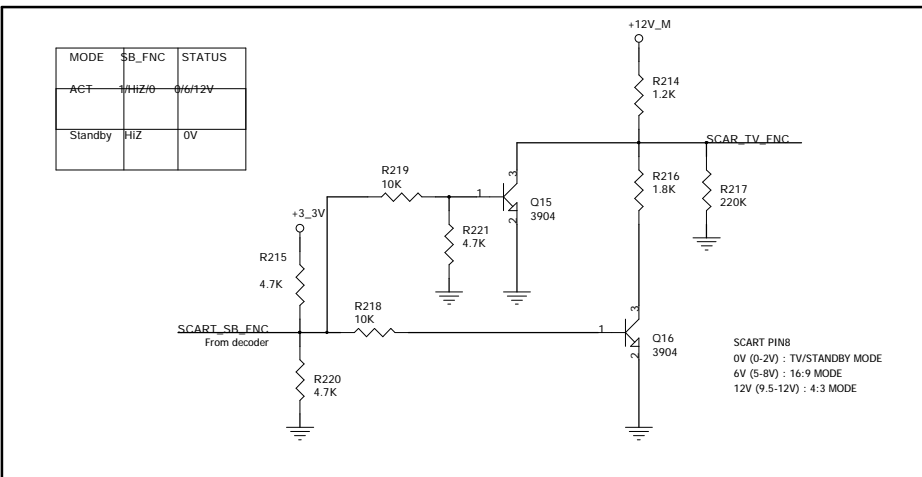
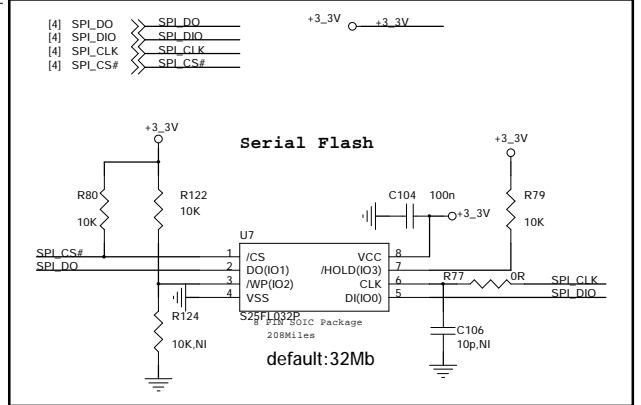
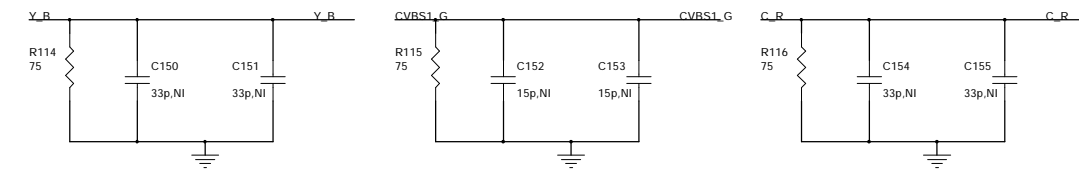
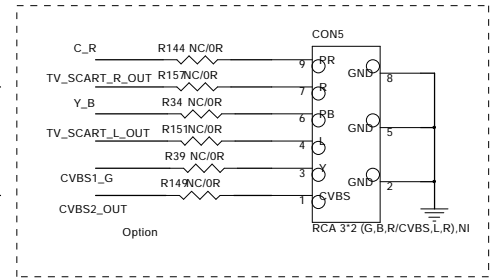
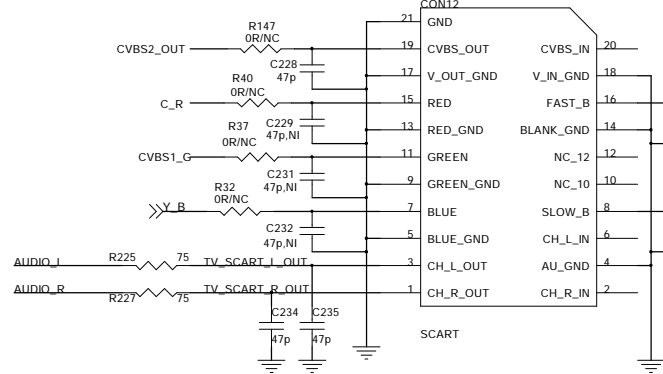
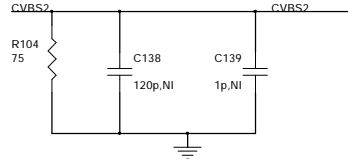
Put all ESD components close to the I/O connector

For layout issue



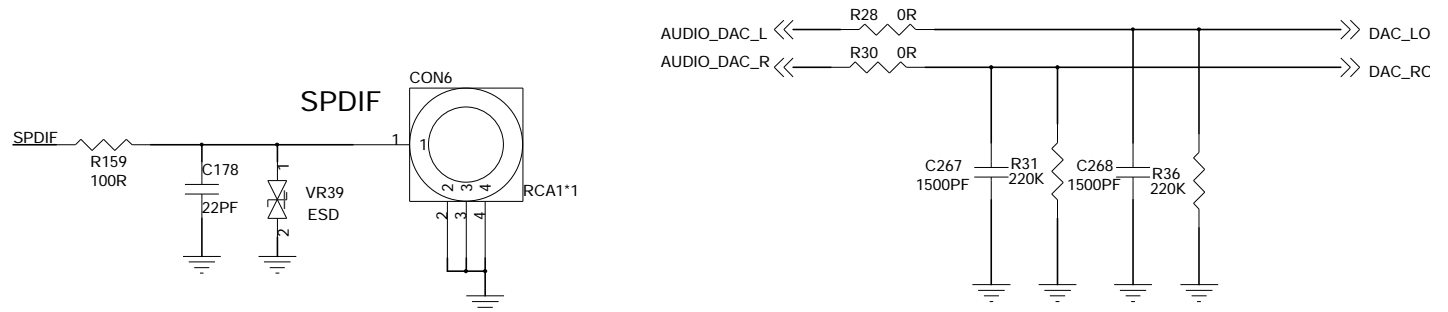
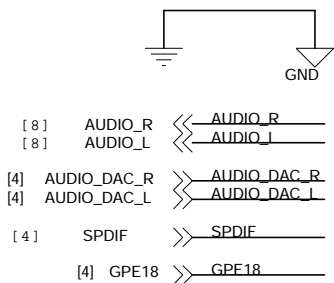
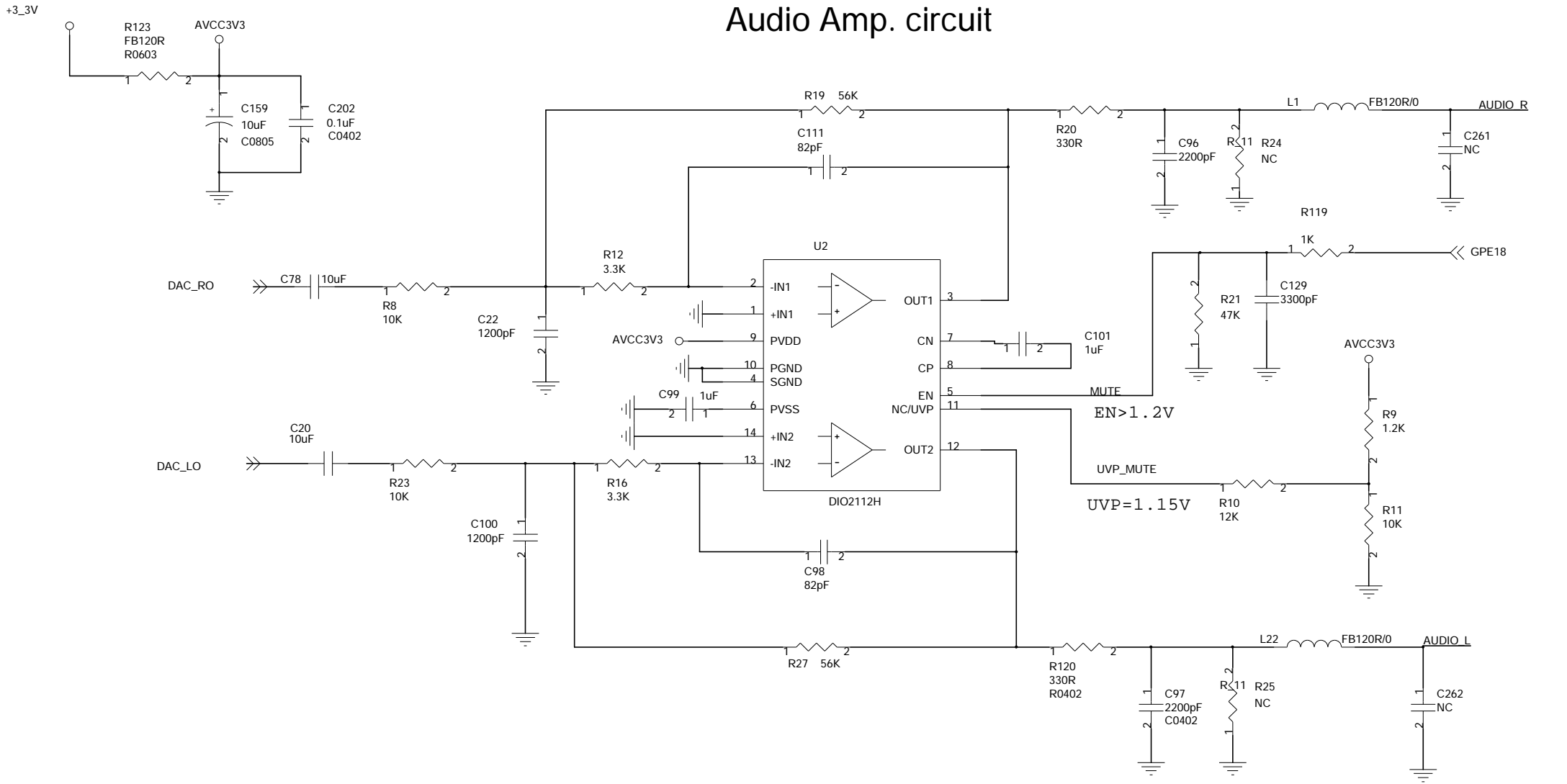
TV_SCART

- [4] SCART_RGB >> SCART_RGB
- [4] SCART_SB_FNC >> SCART_SB_FNC
- [4] CVBS1_G >> CVBS1_G
- [4] Y_B >> Y_B
- [4] C_R >> C_R
- [4] CVBS2 >> CVBS2
- [9] AUDIO_R >> AUDIO_R
- [9] AUDIO_L >> AUDIO_L



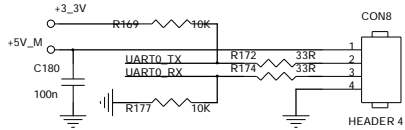
Put all ESD components close to scart

Audio Amp. circuit



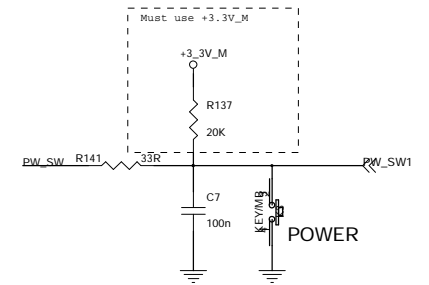
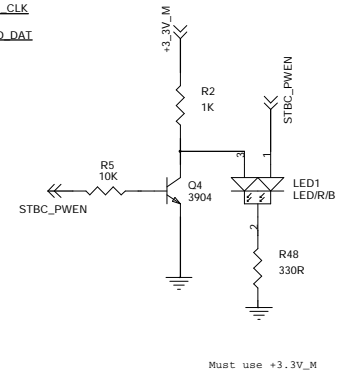
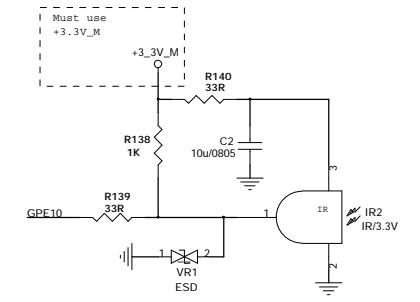
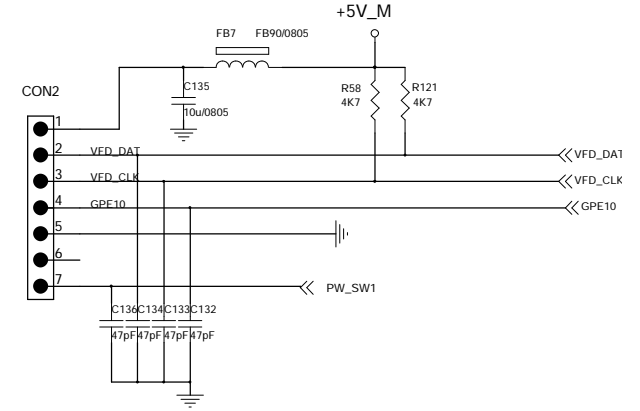
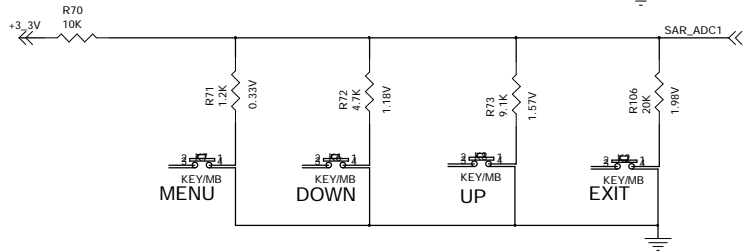
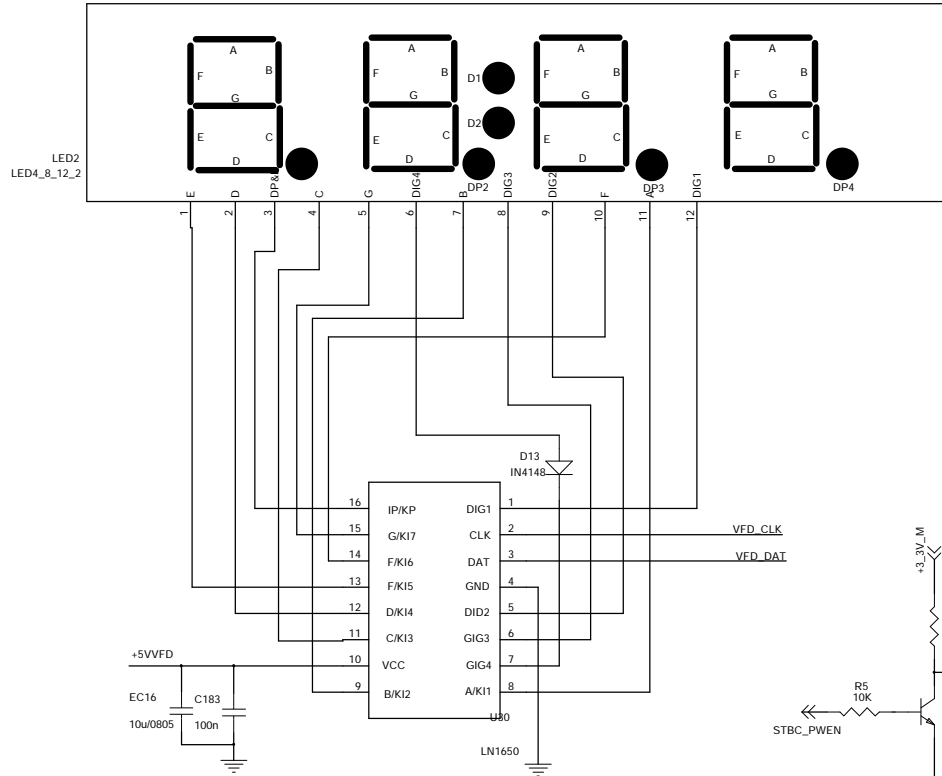
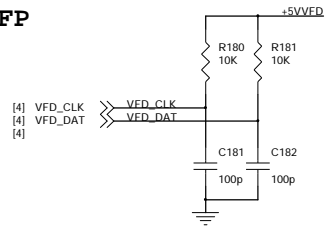
For layout issue UART0

[4] UART0_TX << UART0_TX
 [4] UART0_RX << UART0_RX



+5V_M L14 FB90/0603 +5VVFD

FP



STBC_PWEN:
 H:Action mode; STBYLED OFF
 L:Standby mode; STBYLED-ON