

MUR405 THRU MUR4100



4.0 AMP HIGH EFFICIENCY RECTIFIERS



FEATURES

- * Low forward voltage drop
- * High current capability
- * High reliability
- * High surge current capability
- * High speed switching

MECHANICAL DATA

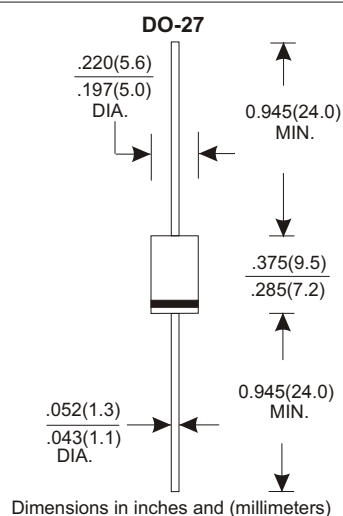
- * Case: Molded plastic
- * Epoxy: UL 94V-0 rate flame retardant
- * Lead: Axial leads, solderable per MIL-STD-202, method 208 guaranteed
- * Polarity: Color band denotes cathode end
- * Mounting position: Any
- * Weight: 1.10 grams
- * Both normal and Pb free product are available:
- * Normal: 80~95%Sn, 5~20%Pb
- * Pb free: 99 Sn above can meet Rohs environment substance directive request

VOLTAGE RANGE

50 to 1000 Volts

CURRENT

4.0 Amperes



MAXIMUM RATINGS AND ELECTRICAL CHARACTERISTICS

Rating 25°C ambient temperature unless otherwise specified.

Single phase half wave, 60Hz, resistive or inductive load.

For capacitive load, derate current by 20%.

| TYPE NUMBER | MUR405 | MUR410 | MUR420 | MUR430 | MUR440 | MUR460 | MUR480 | MUR4100 | UNITS | |
|--|--------|--------|--------|--------|--------|--------|--------|---------|------------|----|
| Maximum Recurrent Peak Reverse Voltage | 50 | 100 | 200 | 300 | 400 | 600 | 800 | 1000 | V | |
| Maximum RMS Voltage | 35 | 70 | 140 | 210 | 280 | 420 | 560 | 700 | V | |
| Maximum DC Blocking Voltage | 50 | 100 | 200 | 300 | 400 | 600 | 800 | 1000 | V | |
| Maximum Average Forward Rectified Current | | | | | | | | | | |
| .375"(9.5mm) Lead Length at Ta=50°C | | | | | | | | | 4.0 | A |
| Peak Forward Surge Current, 8.3 ms single half sine-wave superimposed on rated load (JEDEC method) | | | | | | | | | 200 | A |
| Maximum Instantaneous Forward Voltage at 3.0A | 1.0 | 1.3 | | | 1.70 | | | | V | |
| Maximum DC Reverse Current Ta=25°C | | | | | | | | | 5 | uA |
| at Rated DC Blocking Voltage Ta=100°C | | | | | | | | | 200 | uA |
| Maximum Reverse Recovery Time (Note 1) | 50 | | | | | 70 | | | nS | |
| Typical Junction Capacitance (Note 2) | | | | | | | | | 75 | pF |
| Operating and Storage Temperature Range Tj, TSTG | | | | | | | | | -65 — +150 | °C |

NOTES:

1. Reverse Recovery Time test condition: IF=0.5A, IR=1.0A, IRR=0.25A
2. Measured at 1MHz and applied reverse voltage of 4.0V D.C.

RATING AND CHARACTERISTIC CURVES (MUR405 THRU MUR4100)

FIG.1-TYPICAL FORWARD CHARACTERISTICS

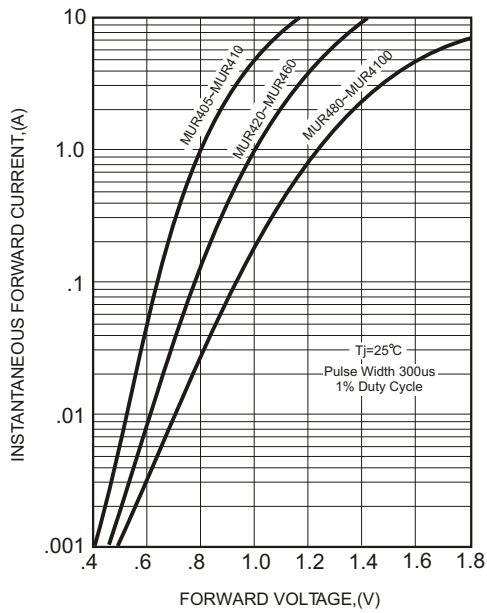


FIG.2-TYPICAL FORWARD CURRENT DERATING CURVE

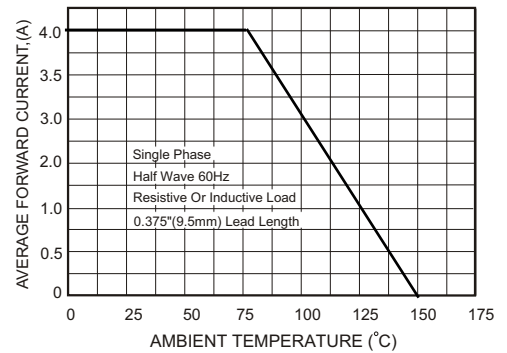


FIG.4-MAXIMUM NON-REPETITIVE FORWARD SURGE CURRENT

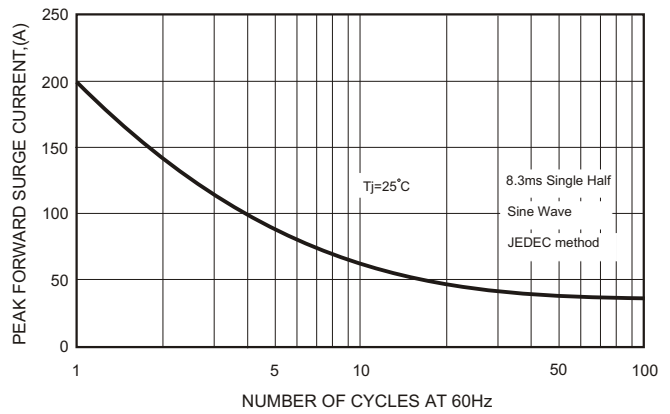
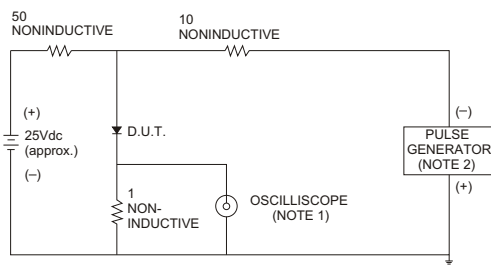


FIG.3- TEST CIRCUIT DIAGRAM AND REVERSE RECOVERY TIME CHARACTERISTICS



- NOTES: 1. Rise Time= 7ns max., Input Impedance= 1 megohm.22pF.
 2. Rise Time= 10ns max., Source Impedance= 50 ohms.

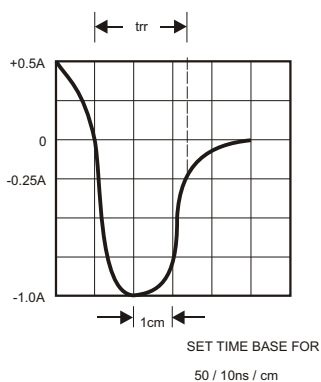


FIG.5-TYPICAL JUNCTION CAPACITANCE

