

# The MRFIC Line

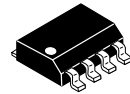
## 900 MHz Downconverter (LNA/Mixer)

The MRFIC2001 is an integrated downconverter designed for receivers operating in the 800 MHz to 1.0 GHz frequency range. The design utilizes Motorola's advanced MOSAIC 3 silicon bipolar RF process to yield superior performance in a cost effective monolithic device. Applications for the MRFIC2001 include CT-1 and CT-2 cordless telephones, remote controls, video and audio short range links, low cost cellular radios, and ISM band receivers. A power down control is provided to minimize current drain with minimum recovery/turn-on time.

- Conversion Gain = 23 dB (Typ)
- Supply Current = 4.7 mA (Typ)
- Power Down Supply Current = 2.0  $\mu$ A (Max)
- Low LO Drive = -10 dBm (Typ)
- LO Impedance Insensitive to Power Down
- No Image Filtering Required
- No Matching Required for RF IN Port
- All Ports are Single Ended
- Order MRFIC2001R2 for Tape and Reel.  
R2 suffix = 2,500 Units per 12 mm, 13 inch Reel.
- Device Marking = M2001

**MRFIC2001**

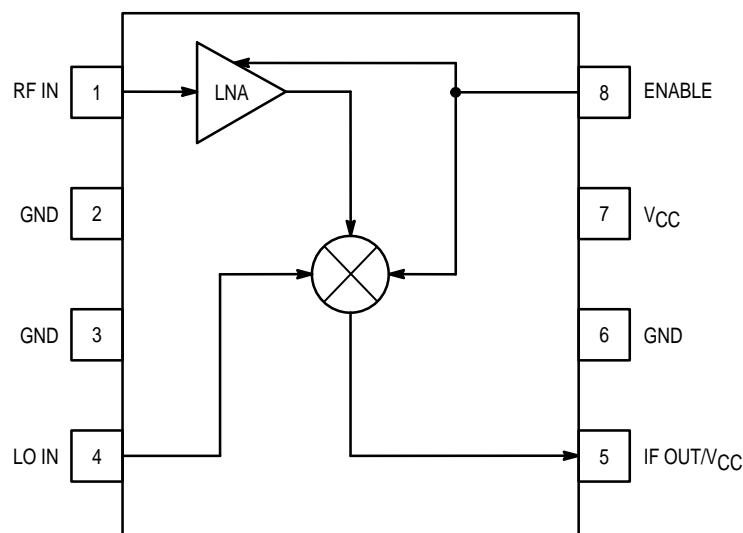
**900 MHz  
DOWNCONVERTER  
LNA/MIXER  
SILICON MONOLITHIC  
INTEGRATED CIRCUIT**



**CASE 751-05  
(SO-8)**

**ABSOLUTE MAXIMUM RATINGS** ( $T_A = 25^\circ\text{C}$  unless otherwise noted)

Rating	Symbol	Value	Unit
Supply Voltage	$V_{CC}$	5.5	Vdc
Control Voltage	ENABLE	5.0	Vdc
Input Power, RF and LO Ports	$P_{RF}, P_{LO}$	+10	dBm
Operating Ambient Temperature	$T_A$	-35 to +85	$^\circ\text{C}$
Storage Temperature	$T_{stg}$	-65 to +150	$^\circ\text{C}$



**Pin Connections and Functional Block Diagram**

## RECOMMENDED OPERATING RANGES

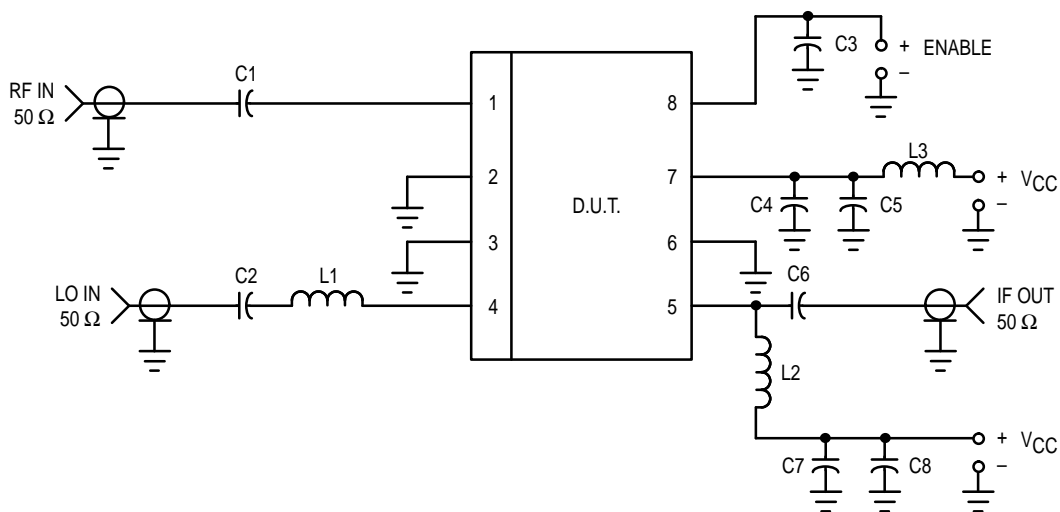
Parameter	Symbol	Value	Unit
Supply Voltage Range	$V_{CC}$	2.7 to 5.0	Vdc
Control Voltage Range	ENABLE	0 to 5.0	Vdc
RF Port Frequency Range	$f_{RF}$	500 to 1000	MHz
IF Port Frequency Range	$f_{IF}$	0 (dc) to 250	MHz

**ELECTRICAL CHARACTERISTICS** ( $V_{CC}$ , ENABLE = 3.0 V,  $T_A$  = 25°C, RF @ 900 MHz, LO @ 1.0 GHz,  $P_{LO}$  = -7.0 dBm, IF @ 100 MHz unless otherwise noted)

Characteristic (1)	Min	Typ	Max	Unit
Supply Current: On-Mode	—	4.7	5.5	mA
Supply Current: Off-Mode (ENABLE < 1.0 Volts)	—	0.1	2.0	$\mu$ A
ENABLE Response Time	—	1.0	—	$\mu$ s
Conversion Gain	20	23	26	dB
Input Return Loss (RF IN Port)	—	13	—	dB
Single Sideband Noise Figure	—	5.5	—	dB
Input 3rd Order Intercept Point	-26	-22.5	—	dBm
Output Power at 1.0 dB Gain Compression	—	-10	—	dBm
LO – RF Isolation (1.0 GHz)	—	37	—	dB
LO – IF Isolation (1.0 GHz)	—	33	—	dB
RF – IF Isolation (900 MHz)	—	4.0	—	dB
RF – LO Isolation (900 MHz)	—	19	—	dB

**NOTE:**

- All Electrical Characteristics measured in test circuit schematic shown in Figure 1 below:



C1, C2, C4, C7 — 100 pF Chip Capacitor  
 C3, C5, C8 — 1000 pF Chip Capacitor  
 C6 — 6.8 pF Chip Capacitor  
 L1 — 8.2 nH Chip Inductor  
 L2 — 270 nH Chip Inductor

L3 — 150 nH Chip Inductor  
 RF Connectors — SMA Type  
 Board Material — Epoxy/Glass  $\epsilon_r$  = 4.5,  
 Dielectric Thickness = 0.014" (0.36 mm)

**Figure 1. Test Circuit Configuration**

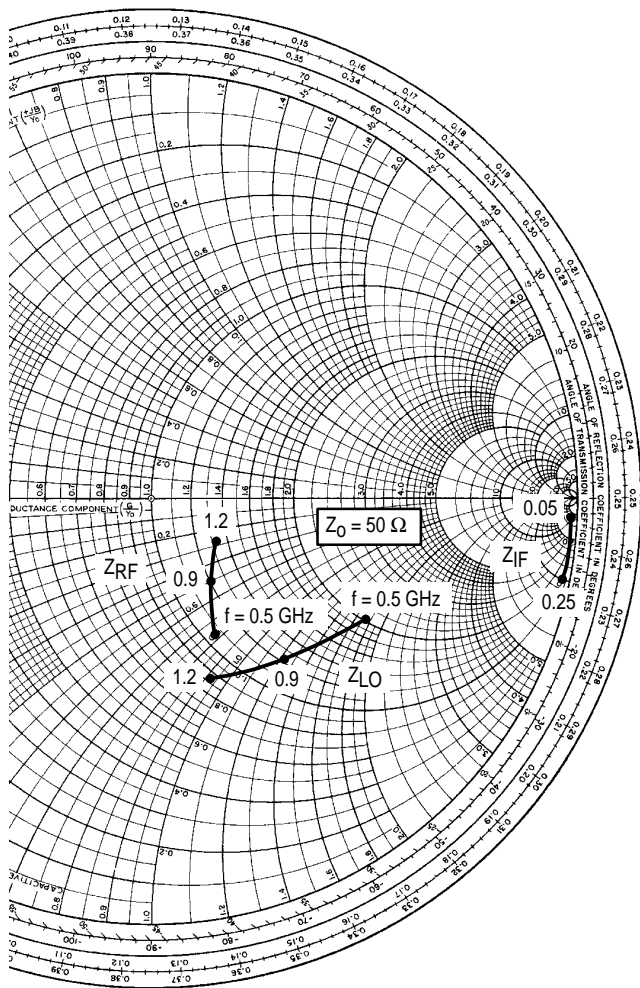


Figure 2. Port Impedances versus Frequency (GHz)

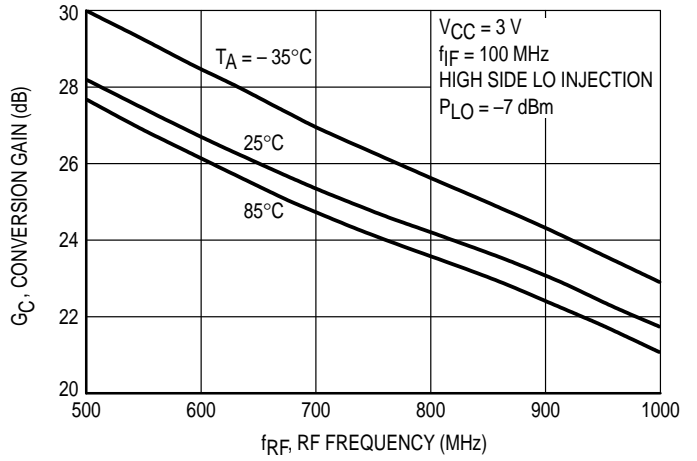


Figure 3. Conversion Gain versus RF Frequency

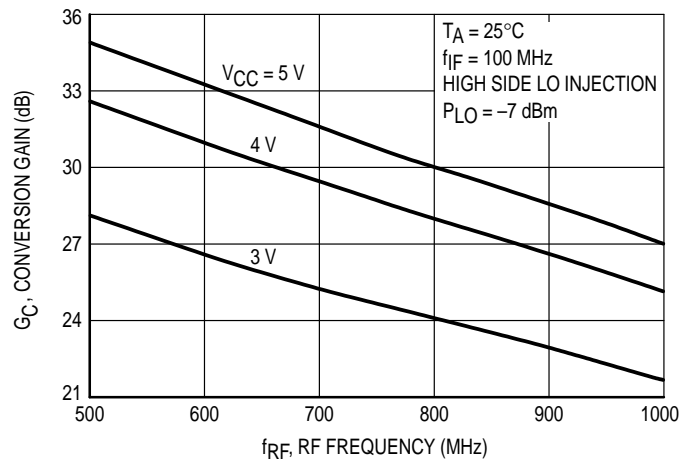
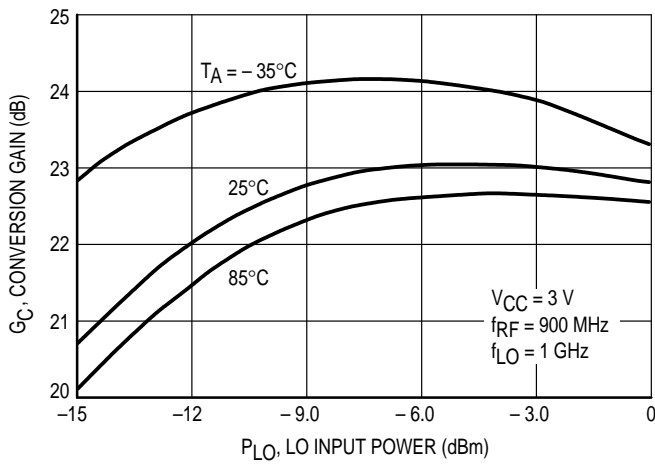


Figure 4. Conversion Gain versus RF Frequency

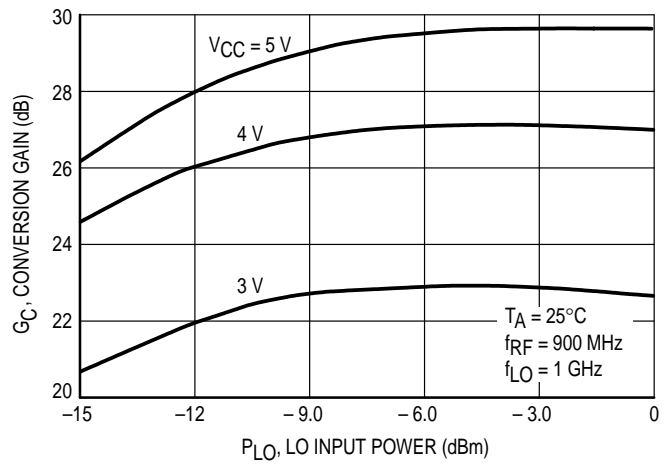
V <sub>CC</sub> (Volts)	f (MHz)	Γ <sub>IF</sub>		Γ <sub>RF</sub>		Γ <sub>LO</sub>	
		Mag	∠φ Degrees	Mag	∠φ Degrees	Mag	∠φ Degrees
3.0	50	0.998	-2.5	—	—	—	—
	100	0.996	-4.9	—	—	—	—
	150	0.993	-7.2	—	—	—	—
	200	0.990	-10	—	—	—	—
	250	0.987	-12	—	—	—	—
	500	—	—	0.36	-70	0.58	-31
	600	—	—	0.32	-70	0.55	-36
	700	—	—	0.29	-69	0.53	-42
	800	—	—	0.26	-68	0.51	-48
	900	—	—	0.23	-63	0.50	-54
	1000	—	—	0.20	-58	0.49	-61
	1100	—	—	0.18	-51	0.47	-68
	1200	—	—	0.17	-44	0.45	-76

Table 1. Port Reflection Coefficients  
(ENABLE = 3.0 V, Z<sub>0</sub> = 50 Ω, T<sub>A</sub> = 25°C)

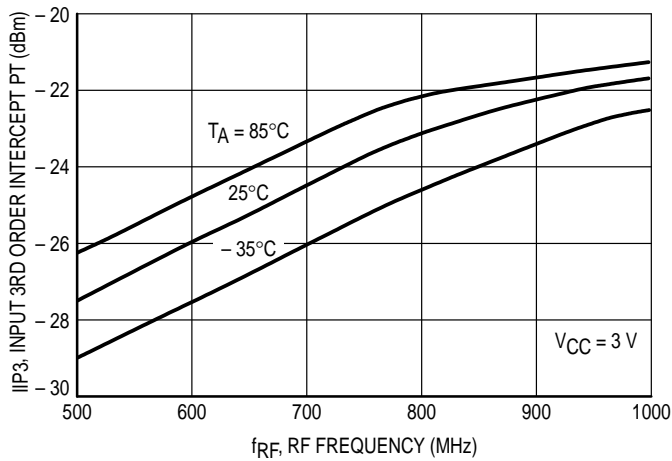
## TYPICAL CHARACTERISTICS



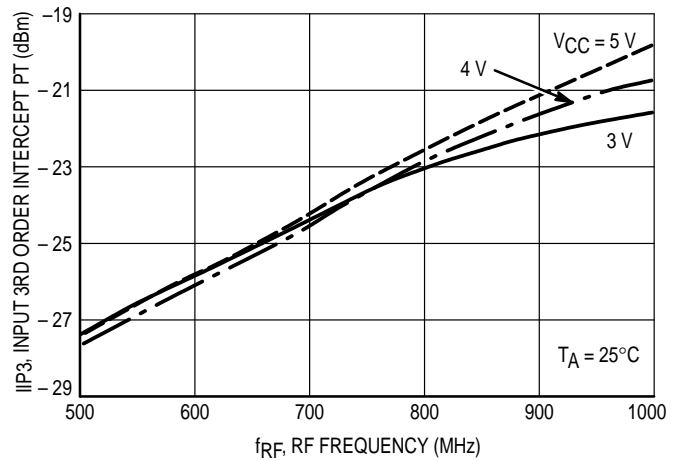
**Figure 5. Conversion Gain versus LO Input Power**



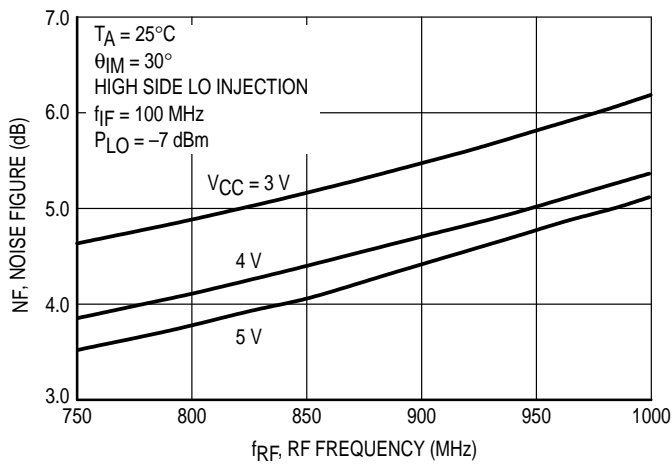
**Figure 6. Conversion Gain versus LO Input Power**



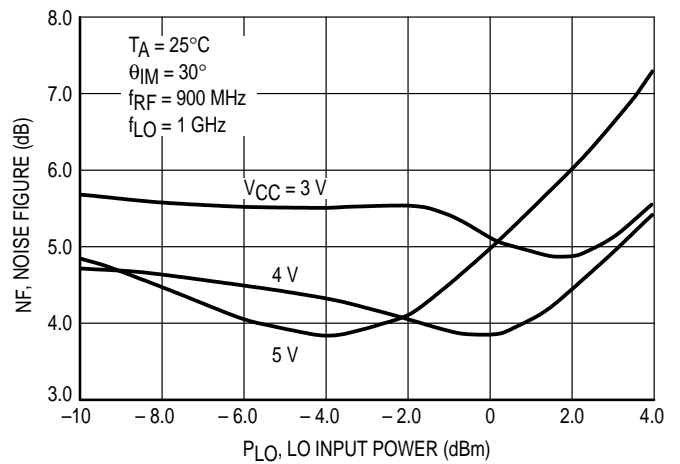
**Figure 7. Input Third Order Intercept Point versus RF Frequency**



**Figure 8. Input Third Order Intercept Point versus RF Frequency**

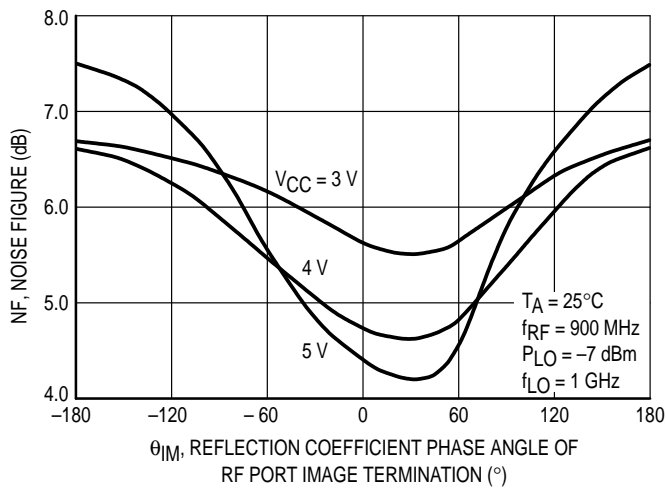


**Figure 9. Noise Figure versus RF Frequency**

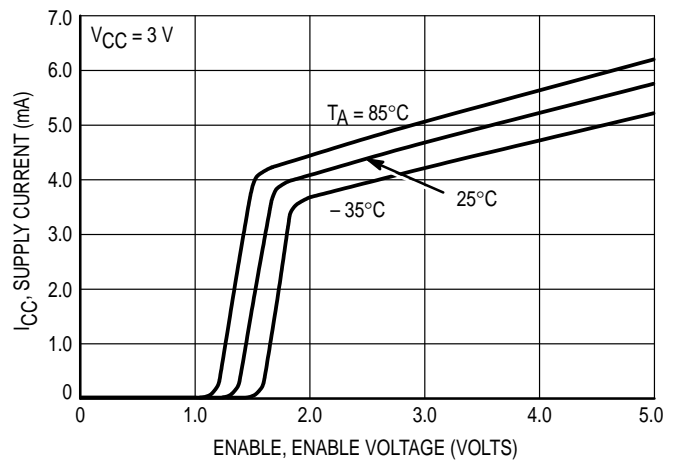


**Figure 10. Noise Figure versus LO Input Power**

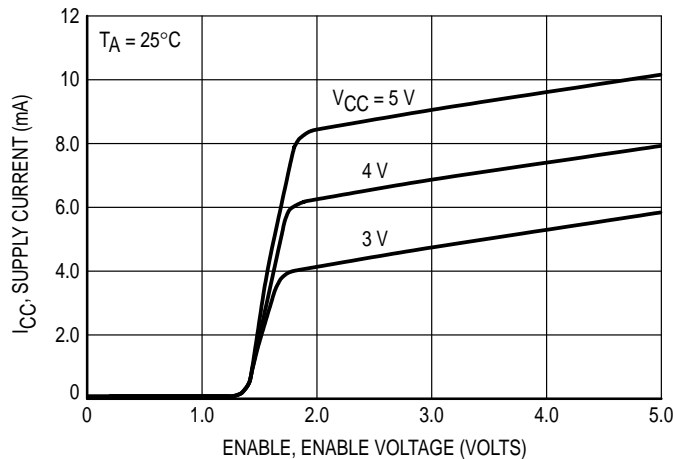
## TYPICAL CHARACTERISTICS



**Figure 11. Noise Figure versus Reflection Coefficient Phase Angle of RF Port Image Termination**



**Figure 12. Supply Current versus Enable Voltage**



**Figure 13. Supply Current versus Enable Voltage**

## APPLICATIONS INFORMATION

### DESIGN PHILOSOPHY

The MRFIC2001 was designed for low cost, small size, and ease of use. This is accomplished by minimizing the number of necessary external components.

The most significant external component eliminated was an image filter between the LNA and mixer. It was found the ensuing image noise entering the mixer from the LNA could be minimized by optimizing the LNA input termination at the image frequency. Also, a double-balanced mixer was used to reject the IF noise from the LNA. This results in excellent LO and spurious rejection.

To eliminate the need for external baluns or decoupling elements, the unused LO and RF ports of the mixer are decoupled internally. Only one of the IF outputs is used, eliminating the need for an external balun on the IF port as well. Also, the LNA input is matched to 50 ohms internally. External matching is required for the LO and IF ports.

To minimize current drain in various TDD/TDMA systems, the MRFIC2001 has a TTL/CMOS compatible enable pin.

### THEORY OF OPERATION

Optimizing the LNA input termination to minimize image noise is quite simple. The optimum LNA input (RF IN pin) termination is  $1\angle 30^\circ$  at the image frequency (regardless of what the image frequency is). A reflection coefficient magnitude close to 1 is automatically obtained from a front-end filter, since the image frequency would be in the stop-band. The  $30^\circ$  phase angle can be obtained by rotating the phase angle of the front-end filter with a series 50 ohm transmission line. The dependence of single-sideband noise figure on the image phase angle is shown in Figure 11. As the plot indicates, there is a little over 1.0 dB of variation across all possible phase angles for a 3.0 V supply. Therefore, setting the phase angle is not critical. At higher supply voltages setting the phase angle is more critical (and more rewarding).

Matching the LO port to 50 ohms can be done several ways. The recommended approach is a series inductor as close to the IC as possible. The inductor value is small enough (~8–15 nH depending on LO frequency) to be printed on the board. A DC block is required and should not be placed between the inductor and IC since this will prevent the inductor from being close enough to the IC to provide a good match.

The IF port is an open collector resulting in a very high output impedance. For optimum linearity (IP3), the IF port should be loaded with a 1000 ohm load-line. Since the output requires a bias inductor and blocking capacitor, the IF filter impedance can be transformed to 1000 ohms with these two elements. If a low output VSWR is desired (to reduce IF filter ripple), a 2.0–4.0 K ohm resistor can be placed in parallel with the bias inductor. This will reduce the conversion gain by 1.0–2.0 dB.

The RF port is nearly 55 ohms resistive in series with a

small amount of capacitive reactance, which results in a 12–13 dB return loss. If a higher return loss is desired, a 3.0–4.0 nH series inductor printed on the board as close to the IC as possible will improve it to over 20 dB. A DC block is also required.

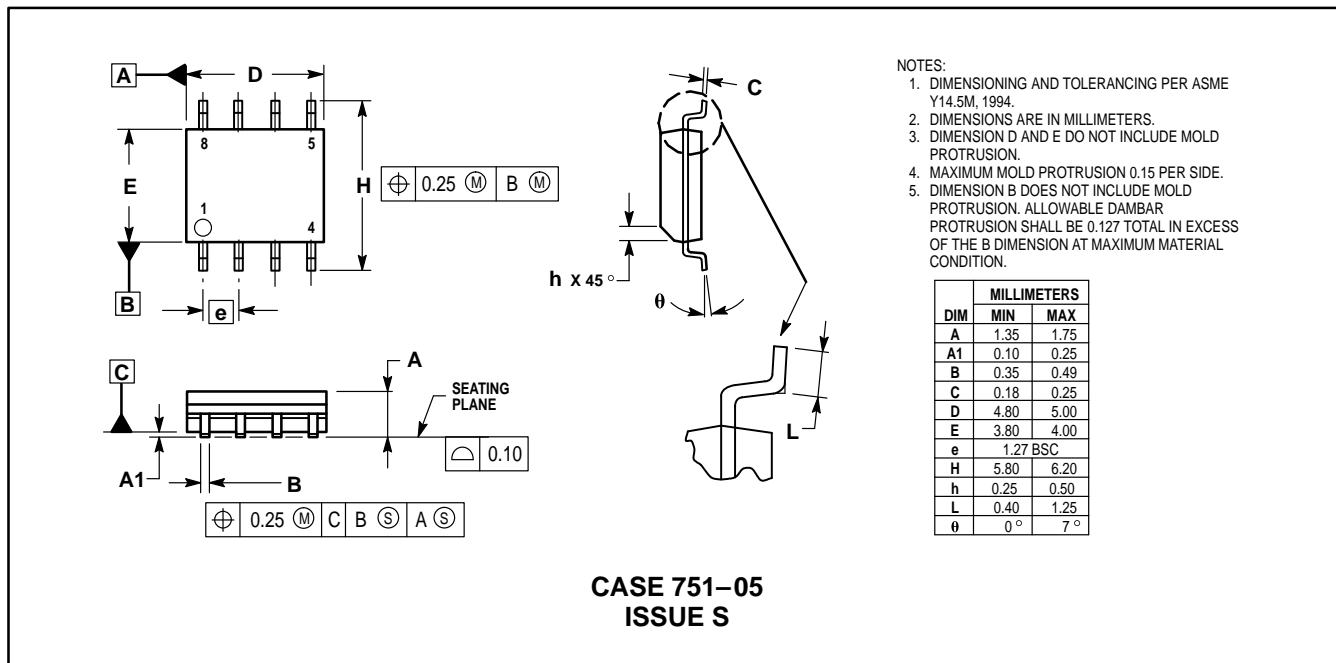
Supply decoupling must be done as close to the IC as possible. A 1000 pF capacitor is recommended. An additional 100 pF capacitor and an RF choke are recommended to keep the LO signal off the supply line.

Enabling/Disabling the MRFIC2001 can be done with its TTL/CMOS compatible Enable pin. The trip point is between 1.0 and 2.0 volts.

### EVALUATION BOARDS

Evaluation boards are available for RF Monolithic Integrated Circuits by adding a "TF" suffix to the device type. For a complete list of currently available boards and ones in development for newly introduced product, please contact your local Motorola Distributor or Sales Office.

### PACKAGE DIMENSIONS



Motorola reserves the right to make changes without further notice to any products herein. Motorola makes no warranty, representation or guarantee regarding the suitability of its products for any particular purpose, nor does Motorola assume any liability arising out of the application or use of any product or circuit, and specifically disclaims any and all liability, including without limitation consequential or incidental damages. "Typical" parameters which may be provided in Motorola data sheets and/or specifications can and do vary in different applications and actual performance may vary over time. All operating parameters, including "Typicals" must be validated for each customer application by customer's technical experts. Motorola does not convey any license under its patent rights nor the rights of others. Motorola products are not designed, intended, or authorized for use as components in systems intended for surgical implant into the body, or other applications intended to support or sustain life, or for any other application in which the failure of the Motorola product could create a situation where personal injury or death may occur. Should Buyer purchase or use Motorola products for any such unintended or unauthorized application, Buyer shall indemnify and hold Motorola and its officers, employees, subsidiaries, affiliates, and distributors harmless against all claims, costs, damages, and expenses, and reasonable attorney fees arising out of, directly or indirectly, any claim of personal injury or death associated with such unintended or unauthorized use, even if such claim alleges that Motorola was negligent regarding the design or manufacture of the part. Motorola and are registered trademarks of Motorola, Inc. Motorola, Inc. is an Equal Opportunity/Affirmative Action Employer.

Mfax is a trademark of Motorola, Inc.

#### How to reach us:

**USA/EUROPE/Locations Not Listed:** Motorola Literature Distribution;  
P.O. Box 5405, Denver, Colorado 80217. 1-303-675-2140 or 1-800-441-2447

**JAPAN:** Nippon Motorola Ltd.: SPD, Strategic Planning Office, 4-32-1,  
Nishi-Gotanda, Shinagawa-ku, Tokyo 141, Japan. 81-3-5487-8488

**Mfax™:** RMFAX0@email.sps.mot.com – TOUCHTONE 1-602-244-6609  
– US & Canada ONLY 1-800-774-1848  
– http://sps.motorola.com/mfax

**ASIA/PACIFIC:** Motorola Semiconductors H.K. Ltd.; 8B Tai Ping Industrial Park,  
51 Ting Kok Road, Tai Po, N.T., Hong Kong. 852-26629298

**INTERNET:** http://motorola.com/sps

