

NPN BUL 系列晶体管 / BUL SERIES TRANSISTORS

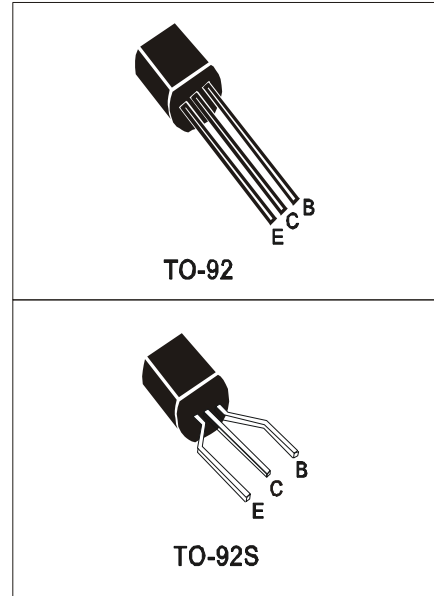
MJE13001AH

- **特点:** 耐压高 开关速度快 安全工作区宽 符合 **RoHS** 规范
- **FEATURES:** ■HIGH VOLTAGE CAPABILITY ■HIGH SPEED SWITCHING ■WIDE SOA ■RoHS COMPLIANT
- **应用:** 充电器 节能灯 电子镇流器
- **APPLICATION:** ■RECHARGER ■FLUORESCENT LAMP ■ELECTRONIC BALLAST

● **最大额定值 (Ta=25°C)**

● **Absolute Maximum Ratings (Ta=25°C) TO-92/92S**

参数 PARAMETER	符号 SYMBOL	额定值 VALUE	单位 UNIT
集电极-基极电压 Collector-Base Voltage	V _{CB0}	700	V
集电极-发射极电压 Collector-Emitter Voltage	V _{CEO}	480	V
集电极-发射极电压 Emitter- Base Voltage	V _{EBO}	9	V
基极电流 Base Current	I _b	100	mA
基极峰值电流 Base Peak Current	I _{bm}	200	mA
集电极电流 Collector Current	I _c	180	mA
集电极峰值电流 Collector Peak Current	I _{cm}	360	mA
集电极耗散功率 Total Power Dissipation	P _{tot}	1.0	W
最高工作温度 Junction Temperature	T _j	150	°C
贮存温度 Storage Temperature	T _{stg}	-65-150	°C



● **电特性 (Tc=25°C)**

● **Electronic Characteristics (Tc=25°C)**

参数名称 CHARACTERISTICS	符号 SYMBOL	测试条件 TEST CONDITION	最小值 MIN	最大值 MAX	单位 UNIT
集电极-基极截止电流 Collector-Base Cutoff Current	I _{CB0}	V _{CB} =700V		100	μA
集电极-发射极截止电流 Collector-Emitter Cutoff Current	I _{CEO}	V _{CE} =480V, I _B =0		250	μA
集电极-基极电压 Collector-Base Voltage	V _{CB0}	I _C =1mA, I _E =0	700		V
集电极-发射极电压 Collector-Emitter Voltage	V _{CEO}	I _C =10mA, I _B =0	480		V
发射极 -基极电压 Emitter- Base Voltage	V _{EBO}	I _E =1mA, I _C =0	9		V
集电极-发射极饱和电压 Collector-Emitter Saturation Voltage	V _{cesat}	I _C =50mA, I _B =10mA		0.5	V
		I _C =120mA, I _B =40mA		1	
发射极-基极饱和电压 Base-Emitter Saturation Voltage	V _{besat}	I _C =50mA, I _B =10mA		1.2	V
电流放大倍数 DC Current Gain	h _{FE}	V _{CE} =5V, I _C =1mA	7		
		V _{CE} =20V, I _C =20mA	15	30	
		V _{CE} =5V, I _C =180mA	5		

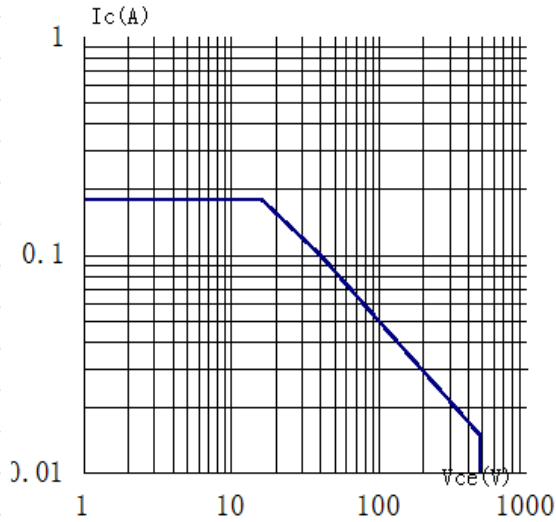
● **订单信息/ORDERING INFORMATION:**

包装形式/PACKING	订货编码/ORDERING CODE	
	普通塑封料/ Nomal Package Material	无卤塑封料/Halogen Free
TO-92 普通袋装/NORMAL PACKING	MJE13001AH TO-92	MJE13001AH TO-92-HF
TO-92S 普通袋装/NORMAL PACKING	MJE13001AH TO-92S	MJE13001AH TO-92S-HF
TO-92 盒式编带/AMMOPACK	MJE13001AH TO-92-AP	MJE13001AH TO-92-AP-HF

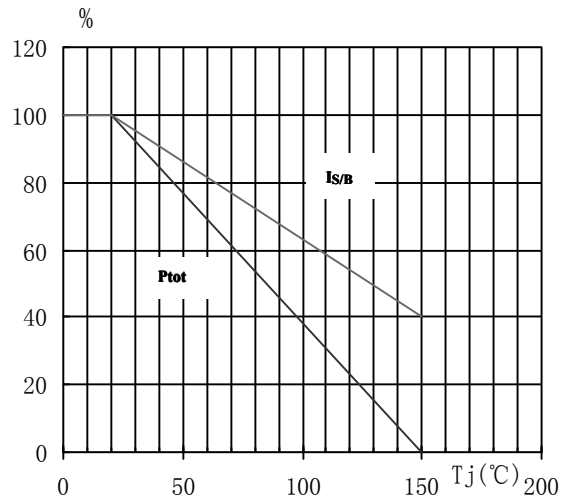
NPN BUL 系列晶体管 / BUL SERIES TRANSISTORS

MJE13001AH

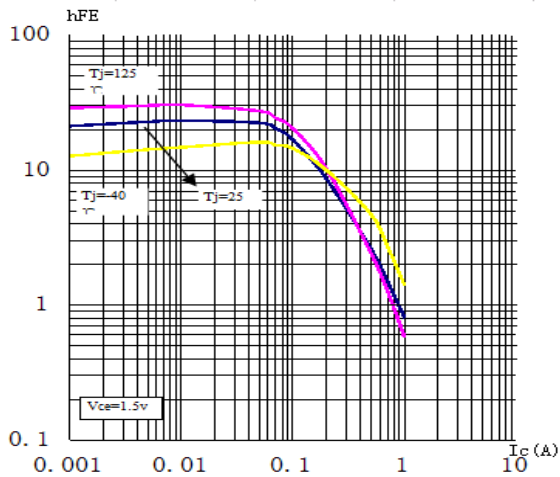
SOA (DC)



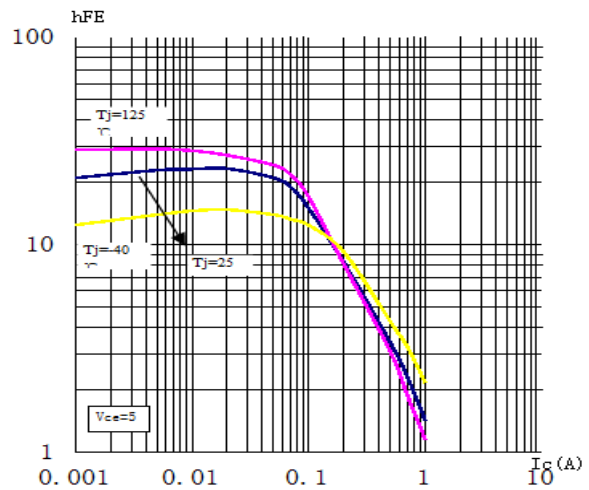
$P_{tot} \propto T_j$



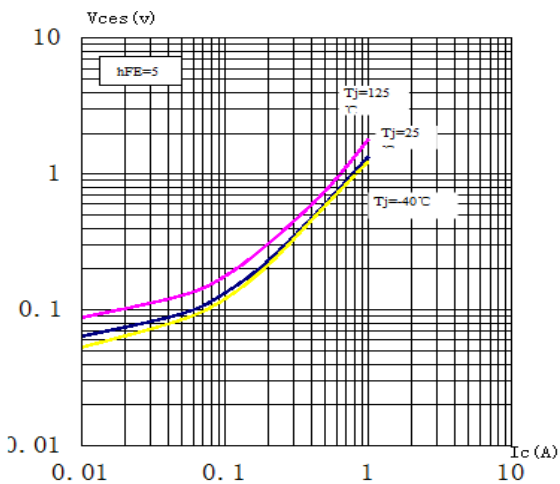
$h_{FE} - I_c$



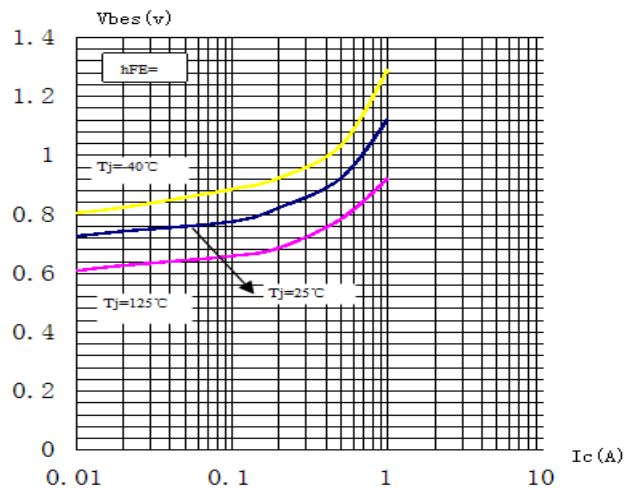
$h_{FE} - I_c$



$V_{cesat} - I_c$



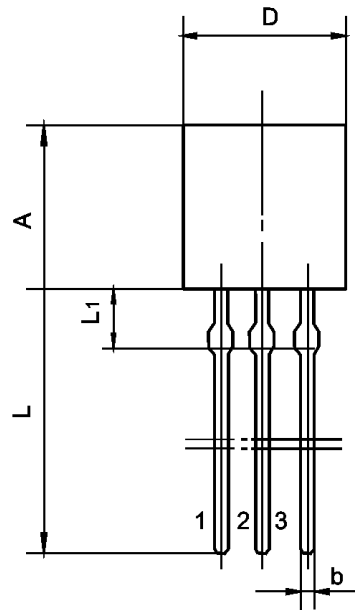
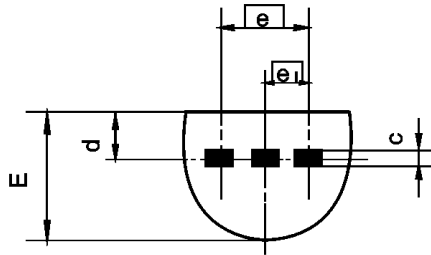
$V_{besat} - I_c$



TO-92 封装机械尺寸 TO-92 MECHANICAL DATA

单位:毫米/UNIT: mm

符号/SYMBOL	最小值/min	典型值/nom	最大值/max
A	4.30		5.30
b	0.30		0.55
c	0.30		0.50
φD D	4.30		5.20
d	1.00		1.70
E	3.20		4.20
e		2.54	
e1		1.27	
L	12.70		15.00
L1	1.50		2.00



TO-92S 封装机械尺寸 TO-92S MECHANICAL DATA

单位:毫米/UNIT: mm

符号/SYMBOL	最小值/min	典型值/nom	最大值/max
A	4.30		5.30
b	0.30		0.55
c	0.30		0.50
D(ϕ D)	4.30		5.20
d	1.00		1.70
E	3.20		4.20
F	2.25	2.40	2.55
L	3.20		3.80
L1	2.60		2.70

