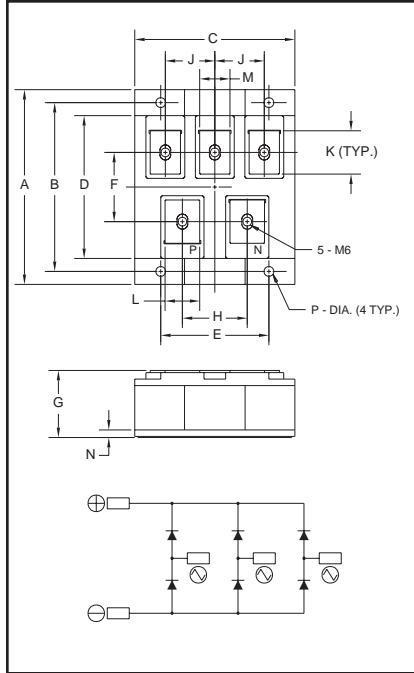


### Three-Phase Diode Bridge Modules 150 Amperes/800 Volts



**Outline Drawing**

Dimension	Inches	Millimeters
A	3.54	90.0
B	3.07	78.0
C	2.91	74.0
D	2.60	66.0
E	1.97	50.0
F	1.26	32.0
G	1.22	31.0
H	1.18	30.0
J	0.90	23.0
K	0.79	20.0
L	0.63	16.0
M	0.55	14.0
N	0.26	6.5
P	0.177±0.004 Dia.	Dia. 4.5±0.1



**ME600815  
Three-Phase Diode Bridge Modules  
150 Amperes/800 Volts**

**Description:**

Powerex Three-Phase Diode Bridge Modules are designed for use in three-phase bridge applications. The modules are isolated consisting of six rectifier diodes.

**Features:**

- Isolated Mounting
- Planar Chips

**Applications:**

- Inverters
- DC Power Supplies
- AC Motor Control Front End

**Ordering Information:**

Select the complete eight digit module part number you desire from the table below.  
Example: ME600815 is an 800 Volt, 150 Ampere Three-Phase Diode Bridge Module.

Type	Voltage Volts (x100)	Current Rating Amperes (x10)
ME60	08	15



Powerex, Inc., 200 Hillis Street, Youngwood, Pennsylvania 15697-1800 (724) 925-7272

**ME600815**

**Three-Phase Diode Bridge Modules**

150 Amperes/800 Volts

**Absolute Maximum Ratings**

Characteristics	Symbol	ME600815	Units
Peak Reverse Blocking Voltage	$V_{RRM}$	800	Volts
Transient Peak Reverse Blocking Voltage (Non-Repetitive), $t < 5ms$	$V_{RSM}$	960	Volts
DC Reverse Blocking Voltage	$V_{R(DC)}$	640	Volts
DC Output Current, $T_C = 97^\circ C$	$I_O$	150	Amperes
Peak One-Cycle Surge (Non-Repetitive) On-State Current (60Hz)	$I_{FSM}$	1500	Amperes
Peak One-Cycle Surge (Non-Repetitive) On-State Current (50Hz)	$I_{FSM}$	1365	Amperes
$I^2t$ (for Fusing), 8.3 milliseconds	$I^2t$	9400	$A^2sec$
Storage Temperature	$T_{STG}$	-40 to 125	$^\circ C$
Operating Temperature	$T_j$	-40 to 150	$^\circ C$
Maximum Mounting Torque M4 Mounting Screw	—	12	in.-lb.
Maximum Mounting Torque M4 Terminal Screw	—	12	in.-lb.
Module Weight (Typical)	—	405	Grams
V Isolation	$V_{RMS}$	2500	Volts



Powerex, Inc., 200 Hillis Street, Youngwood, Pennsylvania 15697-1800 (724) 925-7272

**ME600815**

**Three-Phase Diode Bridge Modules**

150 Amperes/800 Volts

**Electrical and Thermal Characteristics,  $T_j = 25^\circ\text{C}$  unless otherwise specified**

Characteristics	Symbol	Test Conditions	ME600815	Units
<b>Blocking State Maximums</b>				
Reverse Leakage Current, Peak	$I_{RRM}$	$T_j = 150^\circ\text{C}$ , $V_{RRM} = \text{Rated}$	15	mA
<b>Conducting State Maximums</b>				
Peak On-State Voltage	$V_{FM}$	$I_{FM} = 150\text{A}$	1.35	Volts
<b>Thermal Maximums</b>				
Thermal Resistance, Junction-to-Case	$R_{\theta(J-C)}$	Per Module	0.15	$^\circ\text{C/Watt}$
Thermal Resistance, Case-to-Sink (Lubricated)	$R_{\theta(C-S)}$	Per Module	0.04	$^\circ\text{C/Watt}$

**ME600815**  
**Three-Phase Diode Bridge Modules**  
 150 Amperes/800 Volts

