

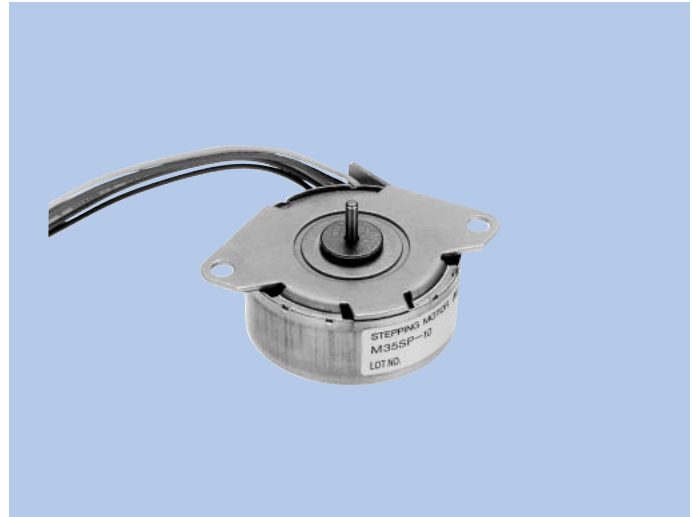
# Stepping Motors M35SP-9, -10N

## OUTLINE

"M35SP-9" with 7.5° and "M35SP-10N" with 3.75° of step angle which belongs to the 35mm outer diameter model series.

Output torque characteristics-holding torque : 51.9mN·m, pull-out torque : 35.8mN·m/200pps, and pull-in torque : 35.3mN·m/200pps (12V DC).

With these torques this motor materializes an excellent size performance.



## FEATURES

1. Compact size and high output torque.
2. Superior running quietness and stability.
3. Step angle: 7.5° (M35SP-9) 3.75° (M35SP-10N).
4. Excellent responsiveness acquired.

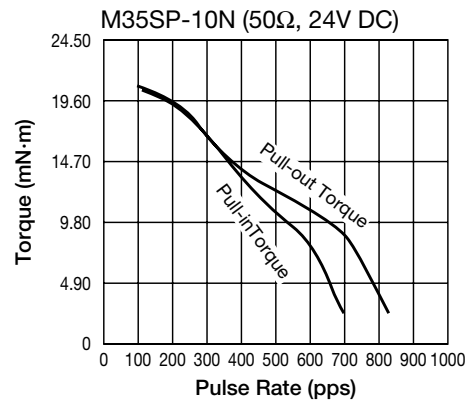
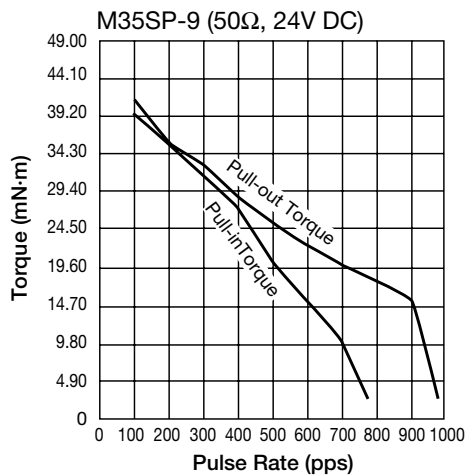
## USES

Printers, multifunction machines, copy machines, FAX, and such.

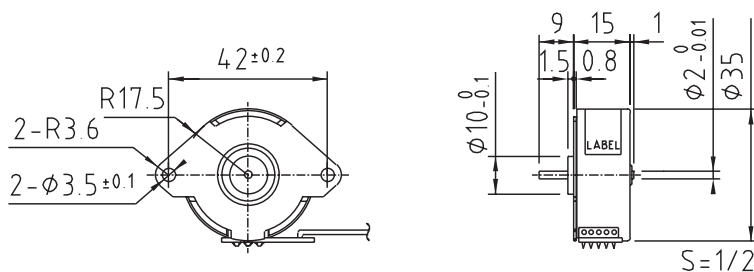
## SPECIFICATIONS

| Items                    | M35SP-9                                 | M35SP-10N       |
|--------------------------|---|-----------------|
| Rated Voltage            | DC 24V                                  |                 |
| Working Voltage          | DC 21.6~26.4V                           |                 |
| Rated Current / Phase    | 517mA max.                              |                 |
| No. of Phase             | 4 Phase                                 |                 |
| Coil DC Resistance       | 50Ω/phase±7%                            |                 |
| Step Angle               | 7.5°/step                               | 3.75°/step      |
| Excitation Method        | 2-2 Phase excitation (Unipolar driving) |                 |
| Insulation Class         | Class E insulation                      |                 |
| Holding Torque           | 51.9mN·m                                | 26.5mN·m        |
| Pull-out Torque          | 35.8mN·m/200pps                         | 13.7mN·m/400pps |
| Pull-in Torque           | 35.3mN·m/200pps                         | 13.2mN·m/400pps |
| Max. Pull-out Pulse Rate | 970pps                                  | 880pps          |
| Max. Pull-in Pulse Rate  | 740pps                                  | 770pps          |

## CHARACTERISTICS



## DIMENSIONS



Unit : mm, General tolerance : ±0.5