

# DC Mini-Motors M28N-3 Series

DC Mini-Motors

## APPLICATIONS

Printer

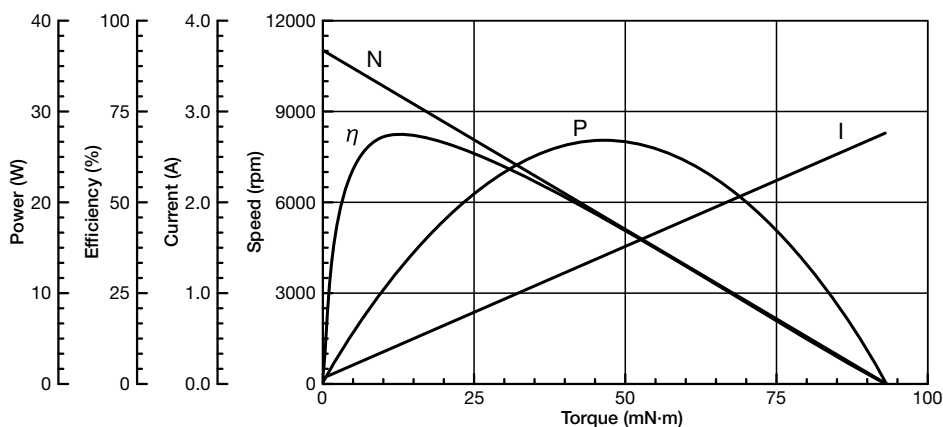


## SPECIFICATIONS

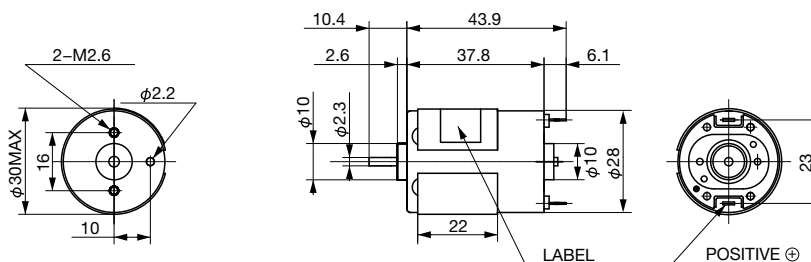
Items	Specifications
Rated Voltage	42.0V
Voltage Range	34.0~50.0V
Rated Load	27.8mN·m
No Load Speed	11,000rpm
No Load Current	130mA or less
Starting Torque	93mN·m
Rotation	CW/CCW

\*Characteristics and the shaft length can be customized.

## CHARACTERISTICS



## DIMENSIONS



Unit : mm

• Any products mentioned in this catalog are subject to any modification in their appearance and others for improvements without prior notification.  
 • The details listed here are not a guarantee of the individual products at the time of ordering. When using the products, you will be asked to check their specifications.