

**LC75421M****Electronic Volume Controller for Cars****Overview**

The LC75421M is an electronic volume controller that enables control of volume, balance, fader, bass/treble + super bass, input switching, and input and output level control functions using only a small number of external components.

**Functions**

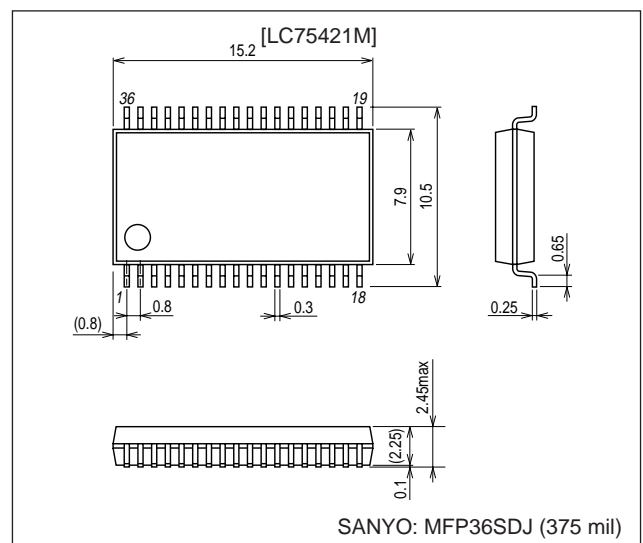
- Volume: 0 dB to -79 dB in 1-dB steps, and  $-\infty$  (81 positions)  
Balance function with separate L/R control
- Fader: rear output or front output can be attenuated across 16 positions (in 2-dB steps from 0 dB to -20 dB, 5-dB steps from -20 dB to -25 dB, 10-dB steps from -25 dB to -45 dB, and -60 dB,  $-\infty$ )
- Bass/treble: A tone control circuit can be configured using an external RC, with 15-position control from 0 dB to  $\pm 11.9$  dB in 1.7-dB steps possible for both bass and treble
- Input gain: 0 dB to +18.75 dB (1.25-dB steps)  
amplification is possible for the input signal.
- Output gain: Fader output can be selected among 0 dB, +6.5 dB, and +8.5 dB.
- Input switching: Five input signals can be selected for Left and for Right
- Super bass: Step control with 11 positions is possible, with peaking characteristics (type T)

**Features**

- On-chip buffer amplifier cuts down number of external components
- Low switching noise generated by on-chip switch due to use of silicon gate CMOS process
- On-chip reference voltage circuit for analog ground
- Controls performed with serial input (CCB)

**Package Dimensions**

unit: mm

**3263-MFP36SDJ (375 mil)**

- CCB is a trademark of SANYO ELECTRIC CO., LTD.
- CCB is SANYO's original bus format and all the bus addresses are controlled by SANYO.

■ Any and all SANYO products described or contained herein do not have specifications that can handle applications that require extremely high levels of reliability, such as life-support systems, aircraft's control systems, or other applications whose failure can be reasonably expected to result in serious physical and/or material damage. Consult with your SANYO representative nearest you before using any SANYO products described or contained herein in such applications.

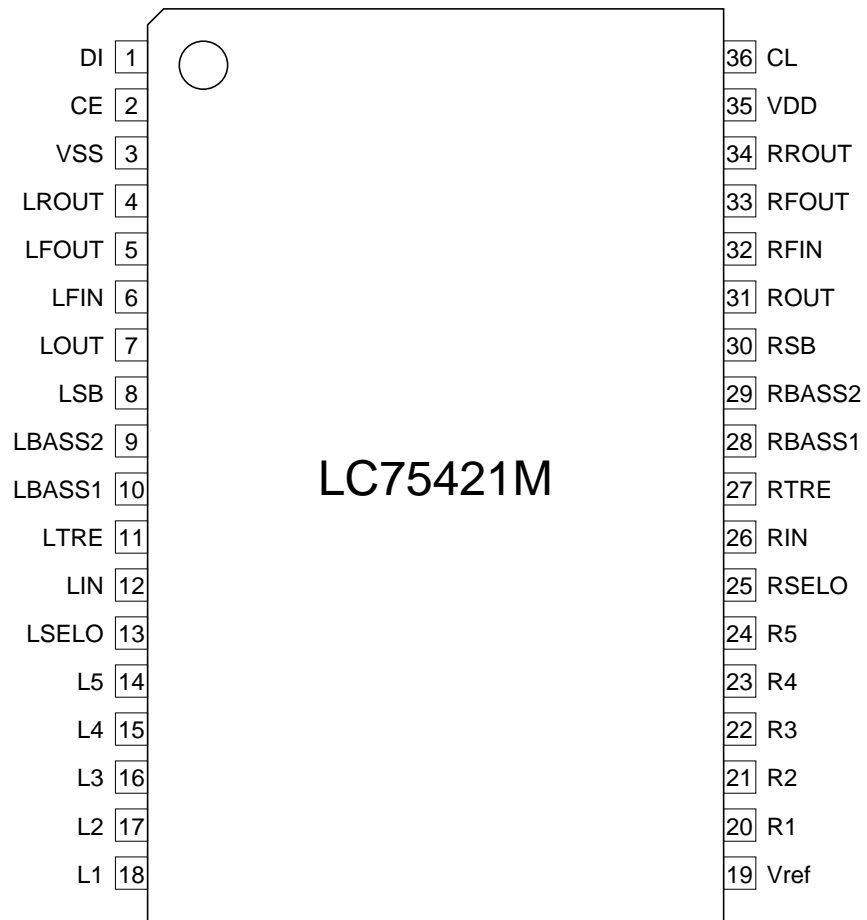
■ SANYO assumes no responsibility for equipment failures that result from using products at values that exceed, even momentarily, rated values (such as maximum ratings, operating condition ranges, or other parameters) listed in products specifications of any and all SANYO products described or contained herein.

**SANYO Electric Co., Ltd. Semiconductor Company**

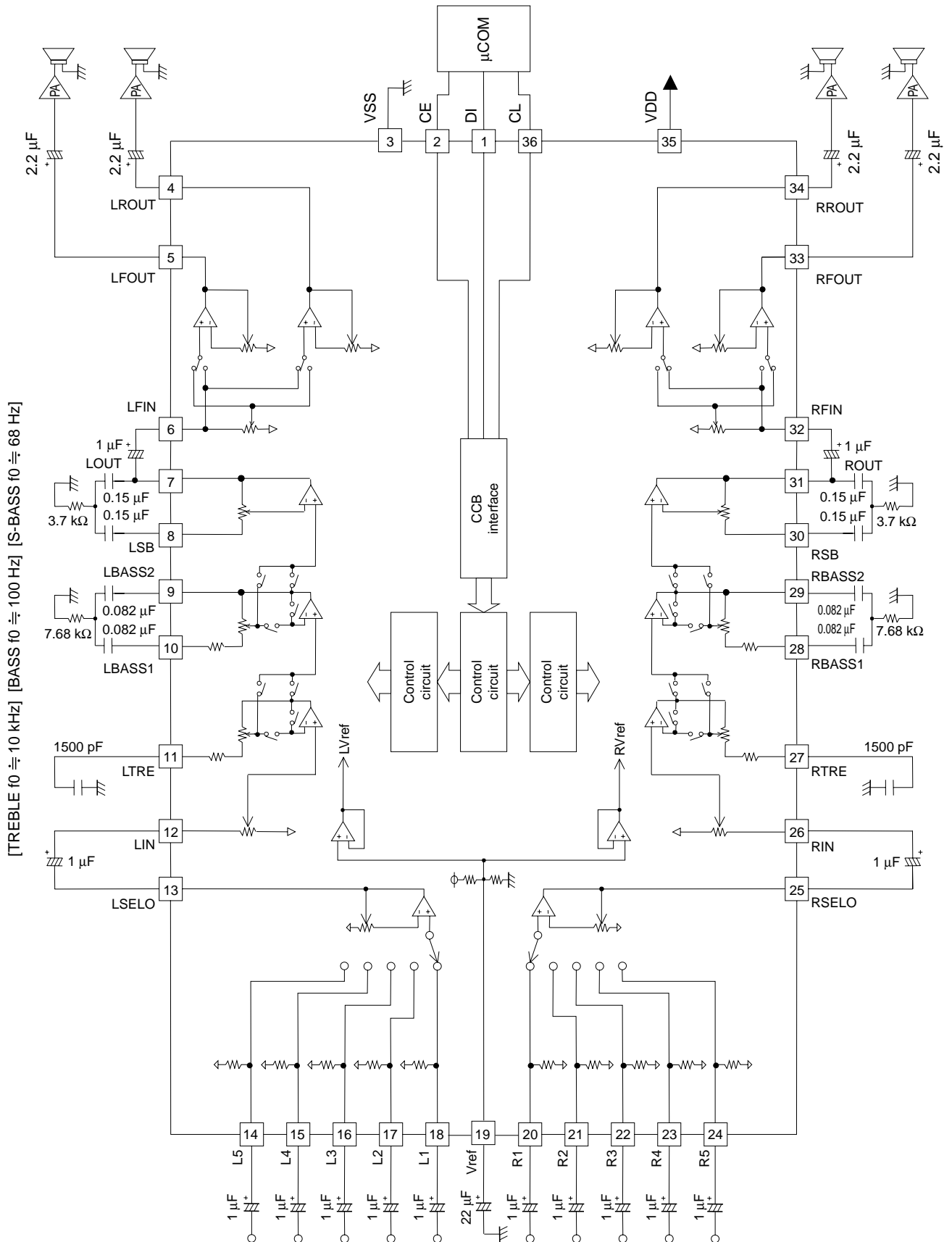
TOKYO OFFICE Tokyo Bldg., 1-10, 1 Chome, Ueno, Taito-ku, TOKYO, 110-8534 JAPAN

# LC75421M

## Pin Assignment



Equivalent Circuit Block Diagram



## LC75421M

### Specifications

**Absolute Maximum Ratings at  $T_a = 25^\circ\text{C}$ ,  $V_{SS} = 0\text{ V}$**

Parameter	Symbol	Conditions	Ratings	Unit
Maximum supply voltage	$V_{DD\text{ max}}$	$V_{DD}$	11	V
Maximum input voltage	$V_{IN\text{ max}}$	CE, DI, CL	-0.3 to 11	V
		Input pins other than CE, DI, CL	$V_{SS} - 0.3$ to $V_{DD} + 0.3$	
Allowable power dissipation	$P_{dmax}$	$T_a \leq 85^\circ\text{C}$ , when mounted on board	550	mW
Operating temperature	$T_{opr}$		-40 to +85	$^\circ\text{C}$
Storage temperature	$T_{stg}$		-50 to +125	$^\circ\text{C}$

**Allowable Operating Ranges at  $T_a = -40$  to  $+85^\circ\text{C}$ ,  $V_{SS} = 0\text{ V}$**

Parameter	Symbol	Pin Name	Conditions	Ratings			Unit
				min	typ	max	
Supply voltage	$V_{DD}$	$V_{DD}$		7.5		10	V
Input high-level voltage	$V_{IH}$	CL, DI, CE		4.0		10	V
Input low-level voltage	$V_{IL}$	CL, DI, CE		$V_{SS}$		1.0	V
Input amplitude voltage	$V_{IN}$	CL, DI, CE, LIN, RIN, L1 to L5, R1 to R5, LFIN, RFIN		$V_{SS}$		$V_{DD}$	Vp-p
Input pulse width	$t_{\phi W}$	CL		1			$\mu\text{s}$
Setup time	$t_{setup}$	CL, DI, CE		1			$\mu\text{s}$
Hold time	$t_{hold}$	CL, DI, CE		1			$\mu\text{s}$
Operating frequency	$f_{opg}$	CL				500	kHz

**Electrical Characteristics at  $T_a = 25^\circ\text{C}$ ,  $V_{DD} = 8\text{ V}$ ,  $V_{SS} = 0\text{ V}$**

Parameter	Symbol	Pin Name	Conditions	Ratings			Unit
				min	typ	max	
Maximum input gain	$G_{inmax}$				+18.75		dB
Step resolution	$G_{step}$				+1.25		dB
Input resistance	$R_{in}$	L1, L2, L3, L4, L5 R1, R2, R3, R4, R5			50		k $\Omega$
Clipping level	$V_{cl}$	LSELO, RSELO	THD = 1.0%, $f = 1\text{ kHz}$		2.90		V <sub>rms</sub>
Output load resistance	$R_L$	LSELO, RSELO		10			k $\Omega$

### Volume Block

Parameter	Symbol	Pin Name	Conditions	Ratings			Unit
				min	typ	max	
Input resistance	$R_{in}$	LIN, RIN			50		k $\Omega$

### Fader Volume Block

Parameter	Symbol	Pin Name	Conditions	Ratings			Unit
				min	typ	max	
Step resolution	$AT_{step}$		STEP = 0 dB to -20 dB		2		dB
			STEP = -20 dB to -25 dB		5		
			STEP = -25 dB to -45 dB		10		
Step error	$AT_{err}$		STEP = 0 dB to -45 dB	-2	0	+2	dB
			STEP = -45 dB to -60 dB	-3	0	+3	
Output load resistance	$R_L$			10			k $\Omega$
Output impedance	$R_O$	LFOUT, LROUT RFOUT, RROUT	$R_L = 10\text{ k}\Omega$ , $f = 1\text{ kHz}$ $V_{IN} = 1\text{ V}_{rms}$		46		$\Omega$

## LC75421M

### Bass Band Control Block

Parameter	Symbol	Pin Name	Conditions	Ratings			Unit
				min	typ	max	
Control range	Gbass		MAX. Boost/Cut	±10	±11.9	±14	dB
Step resolution	Estep			1	1.7	3	dB
Internal feedback resistance	Rfeed				56.084		kΩ

### Treble Band Control Block

Parameter	Symbol	Pin Name	Conditions	Ratings			Unit
				min	typ	max	
Control range	Gtre		MAX. Boost/Cut	±10	±11.9	±14	dB
Step resolution	Estep			1	1.7	3	dB
Internal feedback resistance	Rfeed				45.084		kΩ

### Super Bass Block (Type T)

Parameter	Symbol	Pin Name	Conditions	Ratings			Unit
				min	typ	max	
Control range	Crange		MAX. Boost		+20		dB
Step resolution	Estep				+2.0		dB
Internal feedback resistance	Rfeed				66.6		kΩ

### General

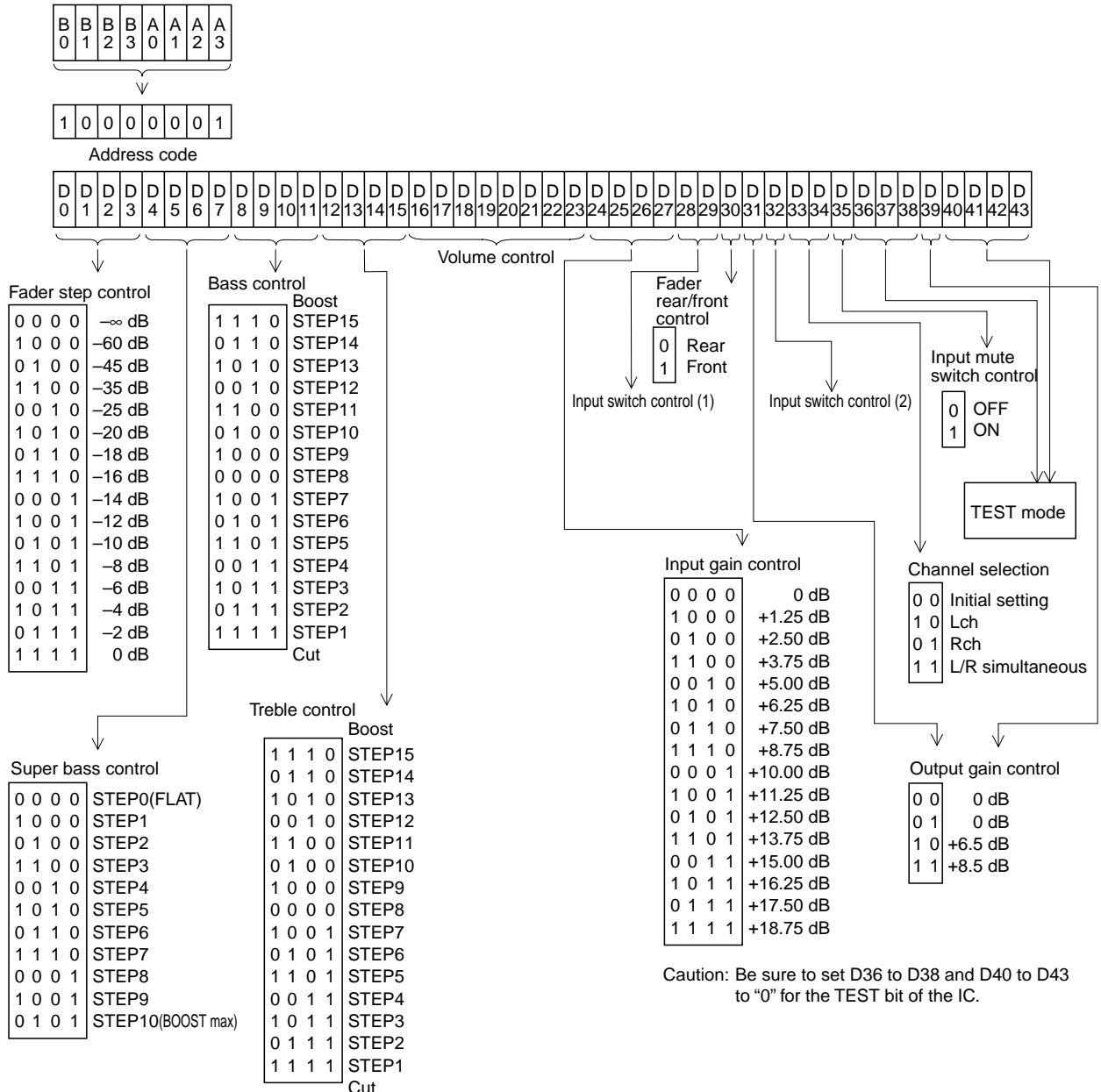
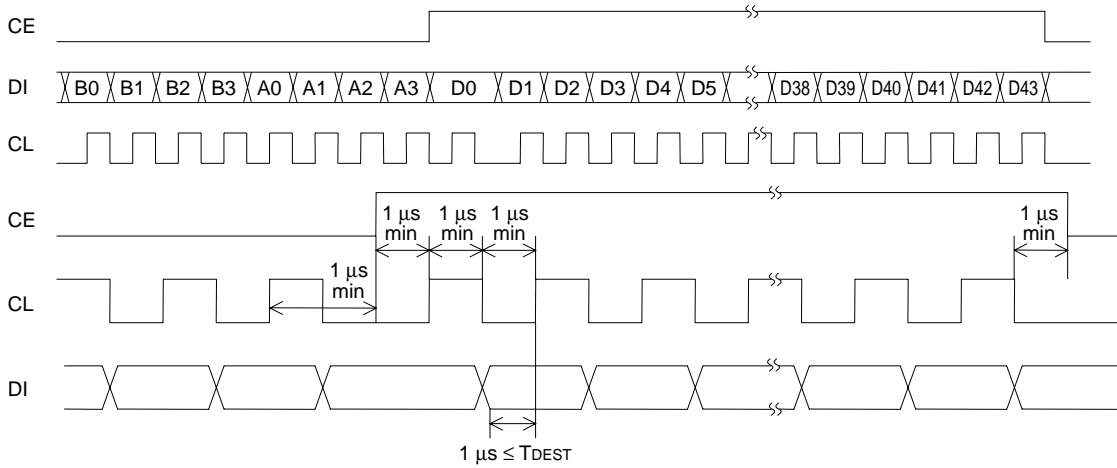
Parameter	Symbol	Conditions	Ratings			Unit
			min	typ	max	
Total harmonic distortion	THD	$V_{IN} = 1 \text{ Vrms}$ , $f = 1 \text{ kHz}$ , flat overall		0.003	0.01	%
Crosstalk	CT	$V_{IN} = 1 \text{ Vrms}$ , $f = 1 \text{ kHz}$ , flat overall, $R_g = 1 \text{ k}\Omega$		80.5		dB
Maximum attenuated output	Vomin	$V_{IN} = 1 \text{ Vrms}$ , $f = 1 \text{ kHz}$ , main volume $-\infty$		-80		dB
Output noise voltage	VN-1	Fflat overall, (IHF-A), $R_G = 1 \text{ k}\Omega$		8		μV
	VN-2	Fflat overall, (DIN-AUDIO), $R_G = 1 \text{ k}\Omega$		10		μV
Input high-level current	$I_{IH}$	CL, DI, CE $V_{IN} = 8 \text{ V}$			10	μA
Input low-level current	$I_{IL}$	CL, DI, CE $V_{IN} = 0 \text{ V}$	-10			μA

# LC75421M

## Control Timing and Data Format

To control the LC75421M, input specified serial data to the CE, CL, and DI pins.

The data configuration consists of a total of 52 bits broken down into 8 address bits and 44 data bits.



Caution: Be sure to set D36 to D38 and D40 to D43 to "0" for the TEST bit of the IC.

LC75421M

Volume Control

D16	D17	D18	D19	D20	D21	D22	D23	Operation
0	0	1	0	0	1	0	1	0dB
1	1	0	0	0	1	0	1	-1dB
0	1	0	0	0	1	0	1	-2dB
1	0	0	0	0	1	0	1	-3dB
0	0	1	1	1	0	0	1	-4dB
1	1	0	1	1	0	0	1	-5dB
0	1	0	1	1	0	0	1	-6dB
1	0	0	1	1	0	0	1	-7dB
0	0	1	0	1	0	0	1	-8dB
1	1	0	0	1	0	0	1	-9dB
0	1	0	0	1	0	0	1	-10dB
1	0	0	0	1	0	0	1	-11dB
0	0	1	1	0	0	0	1	-12dB
1	1	0	1	0	0	0	1	-13dB
0	1	0	1	0	0	0	1	-14dB
1	0	0	1	0	0	0	1	-15dB
0	0	1	0	0	0	0	1	-16dB
1	1	0	0	0	0	0	1	-17dB
0	1	0	0	0	0	0	1	-18dB
1	0	0	0	0	0	0	1	-19dB
0	0	1	1	1	1	1	0	-20dB
1	1	0	1	1	1	1	0	-21dB
0	1	0	1	1	1	1	0	-22dB
1	0	0	1	1	1	1	0	-23dB
0	0	1	0	1	1	1	0	-24dB
1	1	0	0	1	1	1	0	-25dB
0	1	0	0	1	1	1	0	-26dB
1	0	0	0	1	1	1	0	-27dB
0	0	1	1	0	1	1	0	-28dB
1	1	0	1	0	1	1	0	-29dB
0	1	0	1	0	1	1	0	-30dB
1	0	0	1	0	1	1	0	-31dB
0	0	1	0	0	1	1	0	-32dB
1	1	0	0	0	1	1	0	-33dB
0	1	0	0	0	1	1	0	-34dB
1	0	0	0	0	1	1	0	-35dB
0	0	1	1	1	0	1	0	-36dB
1	1	0	1	1	0	1	0	-37dB
0	1	0	1	1	0	1	0	-38dB
1	0	0	1	1	0	1	0	-39dB
0	0	1	0	1	0	1	0	-40dB
1	1	0	0	1	0	1	0	-41dB
0	1	0	0	1	0	1	0	-42dB
1	0	0	0	1	0	1	0	-43dB
0	0	1	1	0	0	1	0	-44dB
1	1	0	1	0	0	1	0	-45dB
0	1	0	1	0	0	1	0	-46dB
1	0	0	1	0	0	1	0	-47dB
0	0	1	0	0	0	1	0	-48dB
1	1	0	0	0	0	1	0	-49dB
0	1	0	0	0	0	1	0	-50dB

Continued on next page.

## LC75421M

Continued from preceding page.

D16	D17	D18	D19	D20	D21	D22	D23	Operation
1	0	0	0	0	0	1	0	-51dB
0	0	1	1	1	1	0	0	-52dB
1	1	0	1	1	1	0	0	-53dB
0	1	0	1	1	1	0	0	-54dB
1	0	0	1	1	1	0	0	-55dB
0	0	1	0	1	1	0	0	-56dB
1	1	0	0	1	1	0	0	-57dB
0	1	0	0	1	1	0	0	-58dB
1	0	0	0	1	1	0	0	-59dB
0	0	1	1	0	1	0	0	-60dB
1	1	0	1	0	1	0	0	-61dB
0	1	0	1	0	1	0	0	-62dB
1	0	0	1	0	1	0	0	-63dB
0	0	1	0	0	1	0	0	-64dB
1	1	0	0	0	1	0	0	-65dB
0	1	0	0	0	1	0	0	-66dB
1	0	0	0	0	1	0	0	-67dB
0	0	1	1	1	0	0	0	-68dB
1	1	0	1	1	0	0	0	-69dB
0	1	0	1	1	0	0	0	-70dB
1	0	0	1	1	0	0	0	-71dB
0	0	1	0	1	0	0	0	-72dB
1	1	0	0	1	0	0	0	-73dB
0	1	0	0	1	0	0	0	-74dB
1	0	0	0	1	0	0	0	-75dB
0	0	1	1	0	0	0	0	-76dB
1	1	0	1	0	0	0	0	-77dB
0	1	0	1	0	0	0	0	-78dB
1	0	0	1	0	0	0	0	-79dB
0	0	0	0	0	0	0	0	-∞dB

### Input Switch Control (L1, L2, L3, L4, L5, R1, R2, R3, R4, R5)

D28	D29	D32	Operation
0	0	1	L1 (R1) ON
1	0	1	L2 (R2) ON
0	1	1	L3 (R3) ON
1	1	1	L4 (R4) ON
0	0	0	L5 (R5) ON



# LC75421M

## Pin Functions

Pin No.	Pin Name	Function	Equivalent circuit
18 17 16 15 14 20 21 22 23 24	L1 L2 L3 L4 L5 R1 R2 R3 R4 R5	<ul style="list-style-type: none"> <li>Input signal pins</li> </ul>	
13 25	LSELO RSELO	<ul style="list-style-type: none"> <li>Input selector output pins</li> </ul>	
10 9 28 29	LBASS1 LBASS2 RBASS1 RBASS2	<ul style="list-style-type: none"> <li>Bass band filter configuration capacitor and resistor connection pins</li> </ul>	
8 7 30 31	LSB LOUT RSB ROUT	<ul style="list-style-type: none"> <li>Super bass band filter configuration capacitor and resistor connection pins</li> </ul>	
5 4 33 34	LFOUT LROUT RFOUT RROUT	<ul style="list-style-type: none"> <li>Fader output pins. The front side and rear side can be attenuated separately. The attenuation is the same for both Left and Right.</li> </ul>	

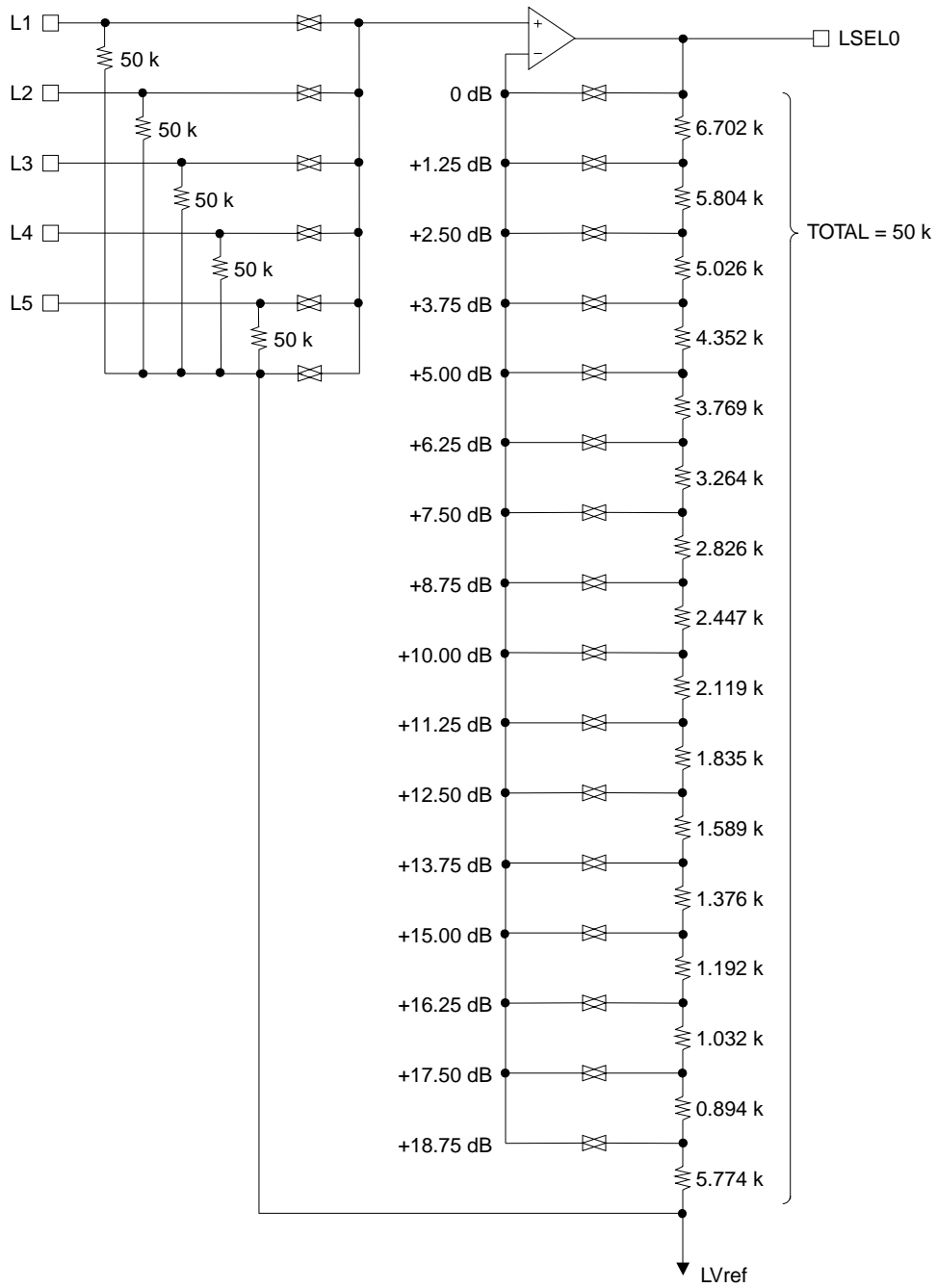
Continued on next page.

## LC75421M

Continued from preceding page.

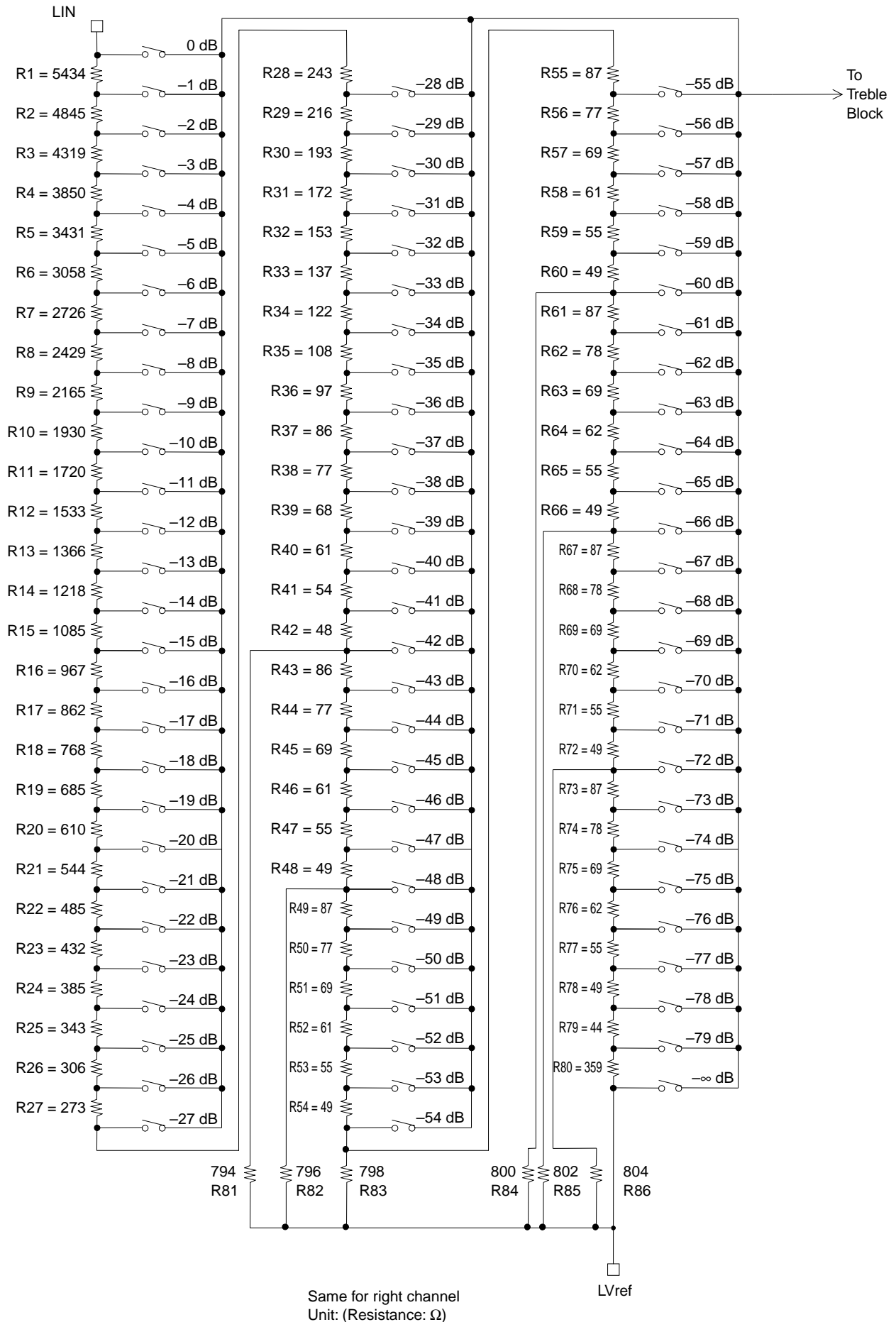
Pin No.	Pin Name	Function	Equivalent circuit
11 27	LTRE RTRE	<ul style="list-style-type: none"> <li>Capacitor connection pin for configuring treble filter</li> </ul>	
19	Vref	<ul style="list-style-type: none"> <li>Connect a capacitor of a few tens of <math>\mu\text{F}</math> between Vref and AV<sub>SS</sub> (V<sub>SS</sub>) as a analog ground <math>0.5 \times V_{\text{DD}}</math> voltage generator, current ripple countermeasure.</li> </ul>	
3	V <sub>SS</sub>	<ul style="list-style-type: none"> <li>Ground pin</li> </ul>	
35	V <sub>DD</sub>	<ul style="list-style-type: none"> <li>Power supply pin</li> </ul>	
2	CE	<ul style="list-style-type: none"> <li>Chip enable pin</li> <li>Data is written to the internal latch and the analog switches are operated when the level changes from High to Low.</li> <li>Data transfer is enabled when the level is High.</li> </ul>	
1 36	DI CL	<ul style="list-style-type: none"> <li>Serial data pin and clock input pin for control</li> </ul>	

Equivalent Circuit Input Block Diagram

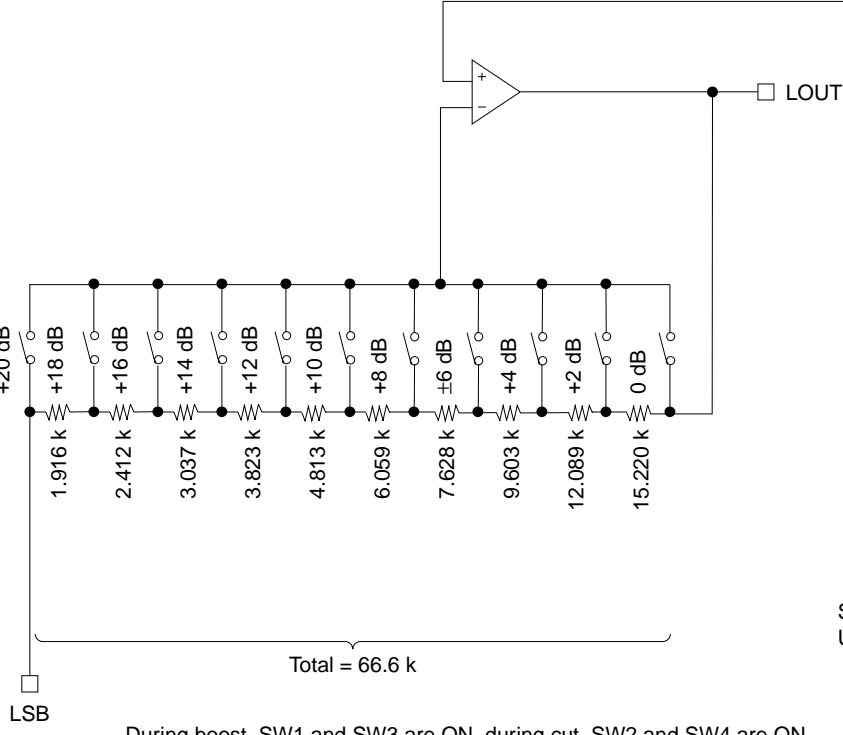
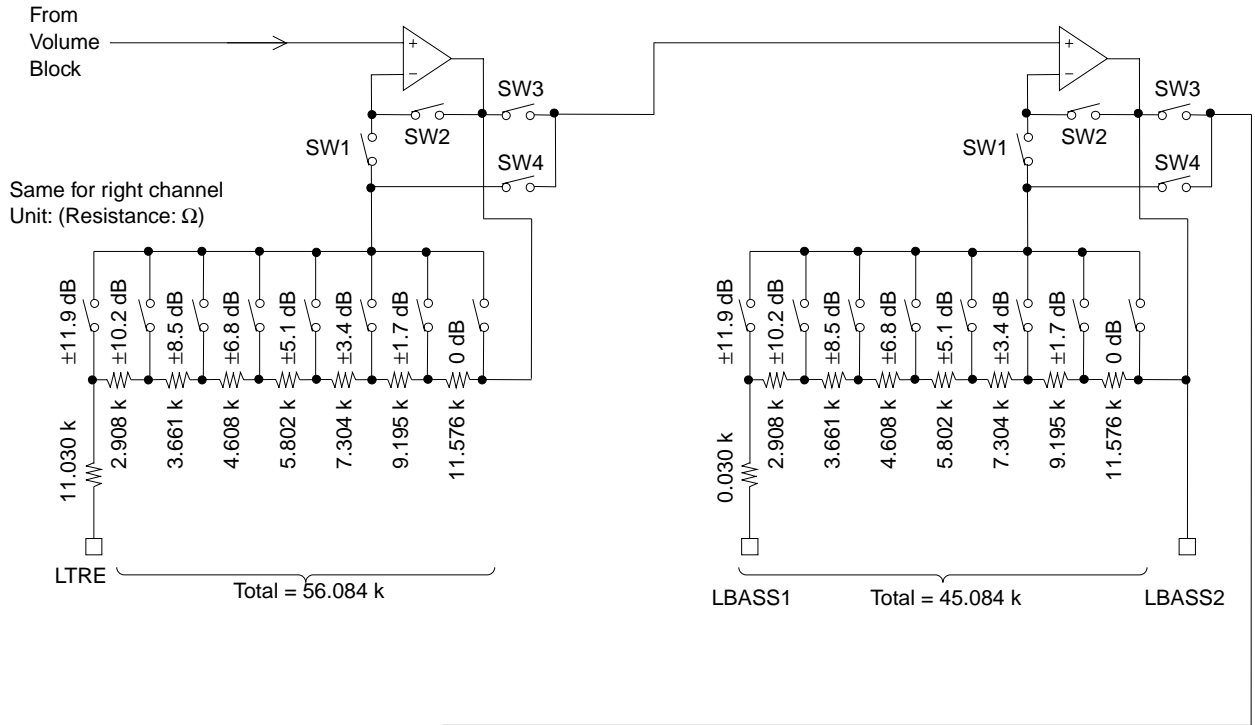


Same for right channel  
Unit: (Resistance: Ω)

Volume Block Equivalent Circuit Diagram



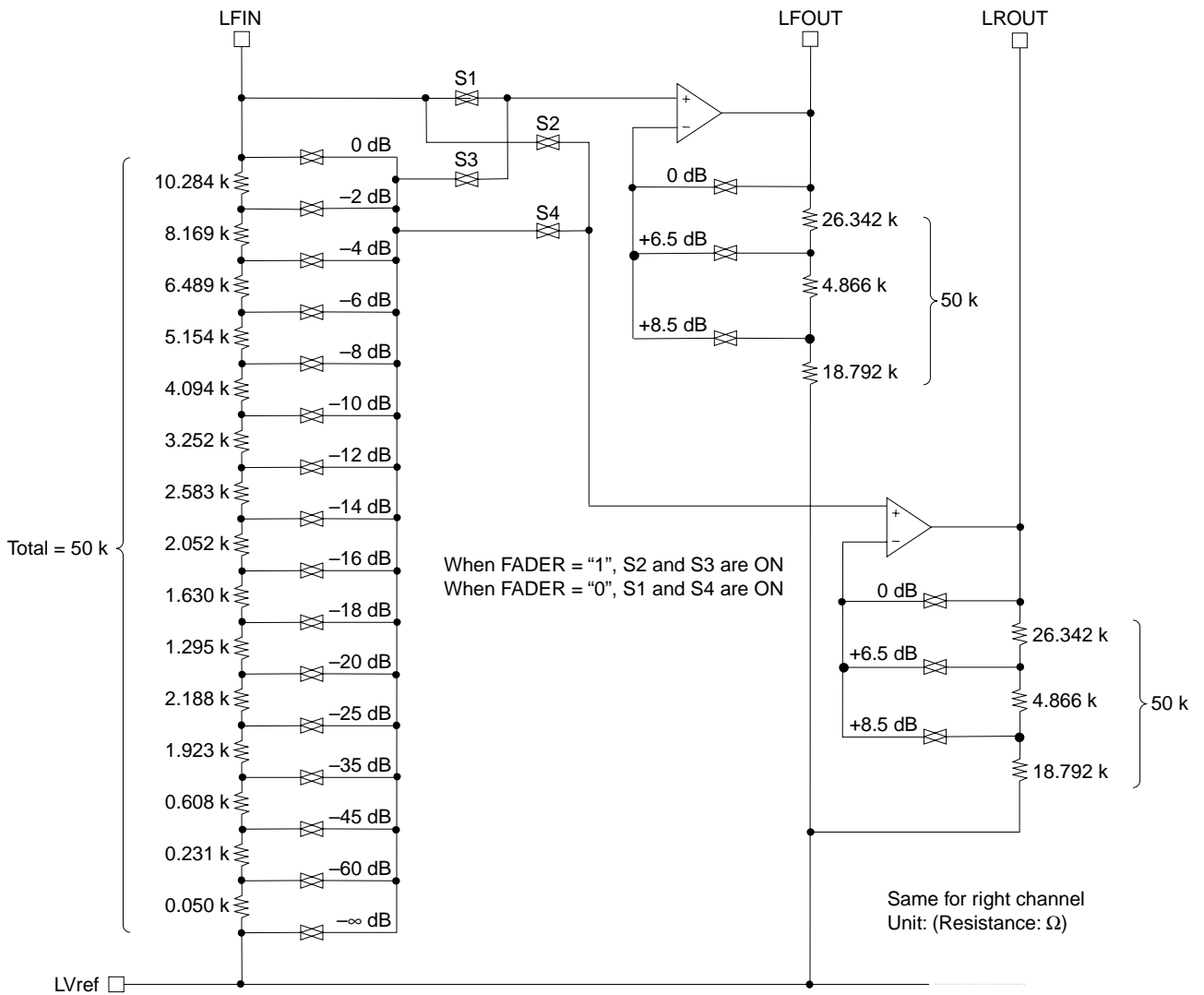
Treble/Bass/Super Bass Band Block Equivalent Circuit Diagram



Same for right channel  
Units: (Resistance: Ω)

During boost, SW1 and SW3 are ON, during cut, SW2 and SW4 are ON,  
when 0 dB, 0 dB SW and SW2 and SW3 are ON.

Fader Volume Block Equivalent Circuit Diagram



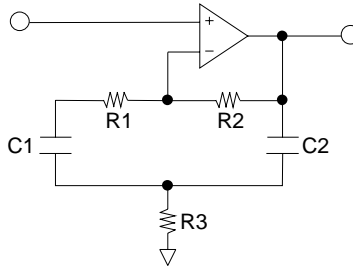
When  $-\infty$  data is sent to the main volume, S1 and S2 become open, and S3 and S4 simultaneously become ON.

**Tone Circuit Constant Calculation Examples**

**Super Bass Band Circuit**

The equivalent circuit and the formula for calculating the external RC with a mean frequency of 68 Hz are shown below.

- Super bass band equivalent circuit block diagram



- Calculation example

Specification Mean frequency:  $f_0 = 68 \text{ Hz}$

Gain during maximum boost:  $G = 20 \text{ dB}$

Let us use  $R_1 = 0$ ,  $R_2 = 66.6 \text{ k}\Omega$ , and  $C_1 = C_2 = C$ .

We obtain  $R_3$  from  $G = 20 \text{ dB}$ .

$$G_{+20 \text{ dB}} = 20 \times \text{LOG}_{10} \left( 1 + \frac{R_2}{2R_3} \right)$$

$$R_3 = \frac{R_2}{2(10^{G/20} - 1)} = \frac{66600}{2 \times (10 - 1)} \approx 3.7 \text{ K}\Omega$$

We obtain  $C$  from mean frequency  $f_0 = 68 \text{ Hz}$ .

$$f_0 = \frac{1}{2\pi \sqrt{R_3 R_2 C_1 C_2}}$$

$$C = \frac{1}{2\pi f_0 \sqrt{R_3 R_2}} = \frac{1}{2\pi \times 68 \sqrt{66600 \times 3700}} \approx 0.15 \mu\text{F}$$

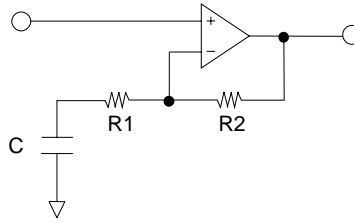
We obtain  $Q$ .

$$Q = \frac{R_3 R_2}{2R_3} \frac{1}{\sqrt{R_3 R_2}} \approx 2.1$$

Treble Band Circuit

The shelving characteristics can be obtained for the treble band.

The equivalent circuit and calculation formula during boost are indicated below.



• Calculation example 1

Specification Set frequency:  $f = 10000 \text{ Hz}$

Gain during maximum boost:  $G + 14 \text{ dB} = 14 \text{ dB}$

Let us use  $R1 = 11.030 \text{ k}\Omega$  and  $R2 = 45.054 \text{ k}\Omega$ .

The above constants are inserted in the following formula.

$$G = 20 \times \text{LOG}_{10} \left( 1 + \frac{R2}{\sqrt{R1^2 + (1 / \omega C)^2}} \right)$$

$$C = \frac{1}{2\pi f \sqrt{\left(\frac{R2}{10^{G/20} - 1}\right)^2 - R1^2}}$$

$$= \frac{1}{2\pi 10000 \sqrt{\left(\frac{45054}{5.01 - 1}\right)^2 - 11030^2}} \neq 6800(\text{pF})$$

Simulation Results

Setting	f = 10 kHz	f = 1 kHz
14 dB	13.95	7.42
12 dB	11.98	6.96
10 dB	10	6.34
8 dB	8	5.5
6 dB	6	4.43
4 dB	4	3.13
2 dB	2	1.64



• Calculation example 2

Specification Set frequency:  $f = 10000 \text{ Hz}$

Gain during maximum boost:  $G_{+11.9 \text{ dB}} = 11.9 \text{ dB}$

Let us use  $R1 = 11.030 \text{ k}\Omega$  and  $R2 = 45.054 \text{ k}\Omega$ .

The above constants are inserted in the following formula.

$$G = 20 \times \text{LOG}_{10} \left( 1 + \frac{R2}{\sqrt{R1^2 + (1 / \omega C)^2}} \right)$$

$$C = \frac{1}{2\pi f \sqrt{\left(\frac{R2}{10^{11.9/20} - 1}\right)^2 - R1^2}}$$

$$= \frac{1}{2\pi 10000 \sqrt{\left(\frac{45054}{3.94 - 1}\right)^2 - 11030^2}} \neq 1500(pF)$$

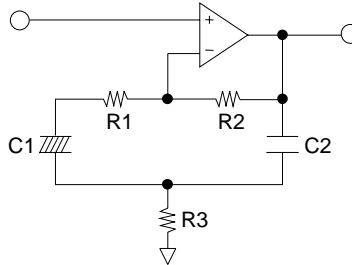
**Simulation Results**

Setting	f = 10 kHz	f = 1 kHz
11.9 dB	11.92	0.00
10.2 dB	10.64	0.00
8.5 dB	9.17	0.00
6.8 dB	7.52	0.00
5.1 dB	5.74	0.00
3.4 dB	3.88	0.00
1.7 dB	1.96	0.00

Bass Shelving Circuit

The equivalent circuit and calculation formula during boost are shown below.

- Bass band equivalent circuit diagram



- Calculation example 1

Specification Mean frequency:  $f_0 = 40 \text{ Hz}$

Gain during maximum boost:  $G_{+14 \text{ dB}} = 14 \text{ dB}$

Let us use  $R_1 = 0 \text{ k}\Omega$ ,  $R_2 = 45.054 \text{ k}\Omega$ ,  $C_1 = 2.2 \text{ }\mu\text{F}$ , and  $C_1 \gg C_2$ .

We obtain  $R_3$  from  $G = 14 \text{ dB}$ .

$$G_{+14 \text{ dB}} = 20 \times \text{LOG}_{10} \left( \frac{R_2 + R_3}{R_3} \right)$$

$$R_3 = \frac{R_2}{10^{G/20} - 1} = \frac{45054}{5.01 - 1} \approx 11 \text{ K}\Omega$$

We obtain  $C_2$  from mean frequency  $f_0 = 40 \text{ Hz}$ .

$$f_0 = \frac{1}{2\pi \sqrt{R_3 R_2 C_1 C_2}}$$

$$C_2 = \frac{1}{(2\pi f_0)^2 R_2 R_3 C_1} = \frac{1}{(2\pi \times 40)^2 \times 45054 \times 11000 \times (2.2 \times 10^{-6})} \approx 0.015 \text{ }\mu\text{F}$$

Simulation Results

Setting	f = 100 Hz	f = 1 kHz
14 dB	13.55	3.65
12 dB	11.73	3.51
10 dB	9.8	3.31
8 dB	7.89	3
6 dB	5.94	2.55
4 dB	3.97	1.92
2 dB	1.99	1.07

• Calculation example 2

Specification Mean frequency:  $f_0 = 40 \text{ Hz}$

Gain during maximum boost:  $G = 12 \text{ dB}$

Let us use  $R_1 = 0 \text{ k}\Omega$ ,  $R_2 = 45.054 \text{ k}\Omega$ ,  $C_1 = 2.2 \text{ }\mu\text{F}$ , and  $C_1 \gg C_2$ .

We obtain  $R_3$  from  $G = 12 \text{ dB}$ .

$$G_{+12 \text{ dB}} = 20 \times \text{LOG}_{10} \left( \frac{R_2 + R_3}{R_3} \right)$$

$$R_3 = \frac{R_2}{10^{G/20} - 1} = \frac{45054}{3.98 - 1} \approx 15 \text{ K}\Omega$$

We obtain  $C_2$  from mean frequency  $f_0 = 40 \text{ Hz}$ .

$$f_0 = \frac{1}{2\pi\sqrt{R_3 R_2 C_1 C_2}}$$

$$C_2 = \frac{1}{(2\pi f_0)^2 R_2 R_3 C_1} = \frac{1}{(2\pi \times 40)^2 \times 45054 \times 15000 \times (2.2 \times 10^{-6})} \approx 0.01 \text{ }\mu\text{F}$$

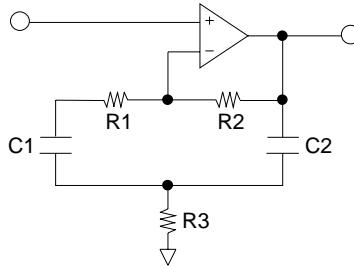
**Simulation Results**

Setting	f = 100 Hz	f = 1 kHz
14 dB	11.73	4.27
12 dB	10.29	4.07
10 dB	8.74	3.78
8 dB	7.11	3.38
6 dB	5.41	2.82
4 dB	3.65	2.09
2 dB	1.85	1.15

(4) Bass Peaking Circuit

The equivalent circuit and the formula for calculating the external RC with a mean frequency of 100 Hz are shown below.

- Bass band equivalent circuit diagram



- Calculation example

Specification Mean frequency:  $f_0 = 100 \text{ Hz}$

Gain during maximum boost:  $G = 11.9 \text{ dB}$

Let us use  $R_1 = 0$ ,  $R_2 = 45.084 \text{ k}\Omega$ , and  $C_1 = C_2 = C$ .

We obtain  $R_3$  from  $G = 11.9 \text{ dB}$ .

$$G_{+11.9 \text{ dB}} = 20 \times \text{LOG}_{10} \left( 1 + \frac{R_2}{2R_3} \right)$$

$$R_3 = \frac{R_2}{2(10^{11.9 \text{ dB}/20} - 1)} = \frac{45084}{2 \times (3.936 - 1)} \approx 7.68 \text{ K}\Omega$$

We obtain  $C$  from mean frequency  $f_0 = 100 \text{ Hz}$ .

$$f_0 = \frac{1}{2\pi\sqrt{R_3R_2C_1C_2}}$$

$$C = \frac{1}{2\pi f_0 \sqrt{R_3R_2}} = \frac{1}{2\pi \times 100 \sqrt{45084 \times 7680}} \approx 0.082 \text{ }\mu\text{F}$$

We obtain  $Q$ .

$$Q = \frac{R_3R_2}{2R_3} \cdot \frac{1}{\sqrt{R_3R_2}} \approx 1.66$$

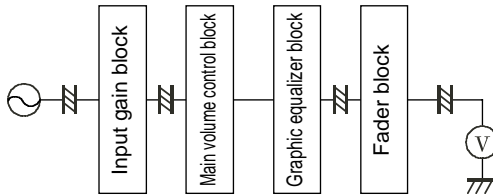
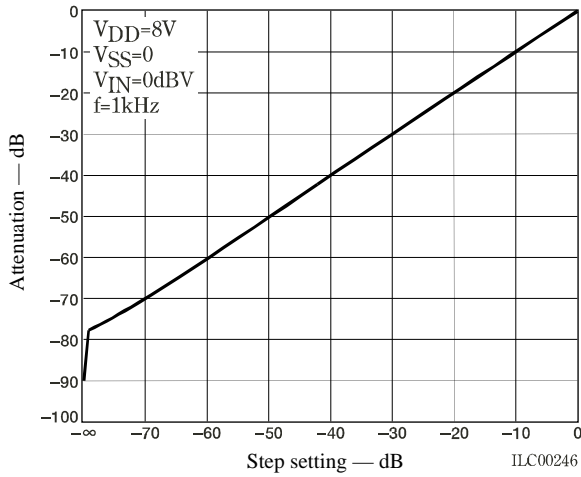
**Simulation Results**

Setting	f = 100 Hz	f = 1 kHz
11.9 dB	11.88	0.00
10.2 dB	10.38	0.00
8.5 dB	8.79	0.00
6.8 dB	7.14	0.00
5.1 dB	5.42	0.00
3.4 dB	3.66	0.00
1.7 dB	1.85	0.00

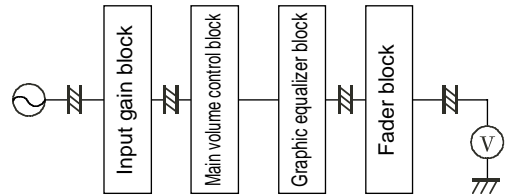
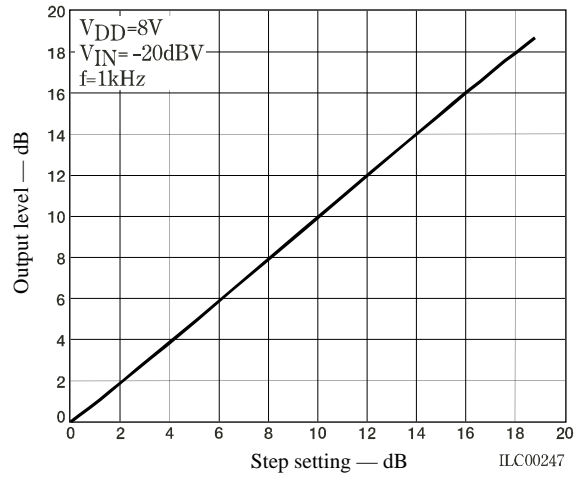
### Usage Cautions

- (1) Upon power application, the internal analog switch status is undefined. Use an external countermeasure such as muting until data is set.
- (2) When performing initial data setting after applying power, send the initial data once, and then send the initial setting data.
- (3) To ensure that the digital frequency signal sent to the CL, DI, and CE pins do not spill over to the analog signal block, either guard these signal lines with a ground pattern, or perform transmission using shielded wires.

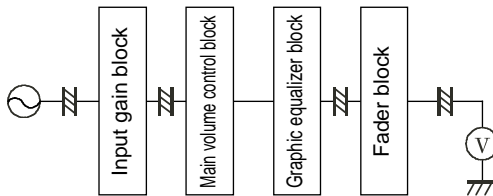
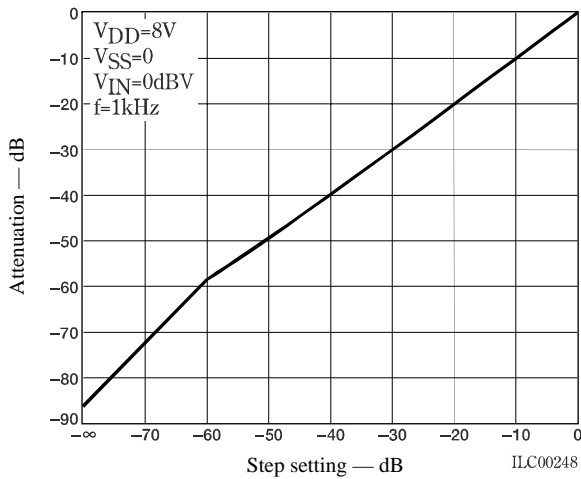
Main Volume Control Step Characteristics



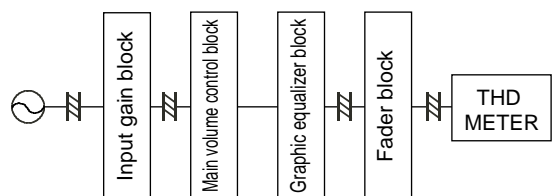
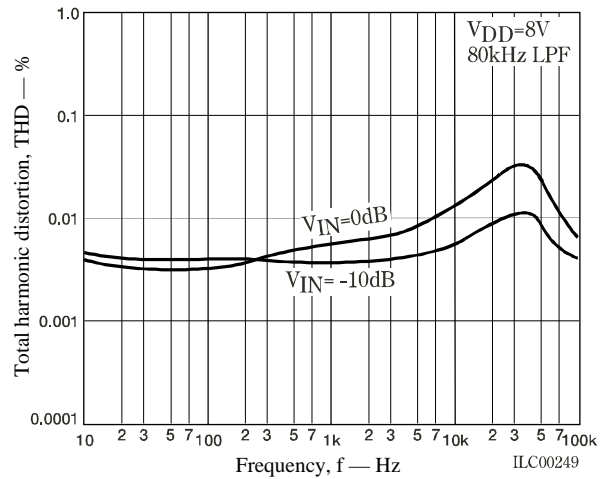
Input Gain Step Characteristics

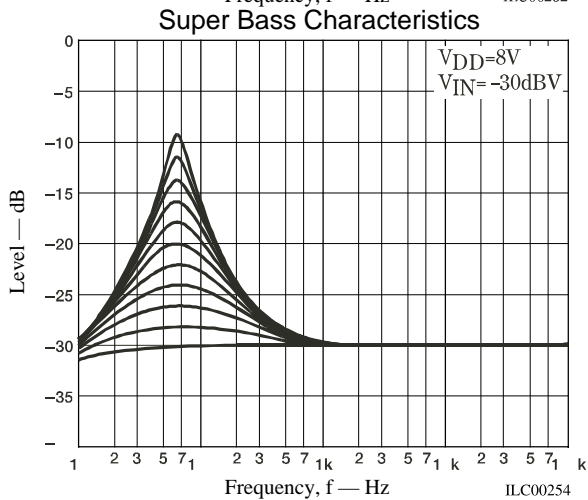
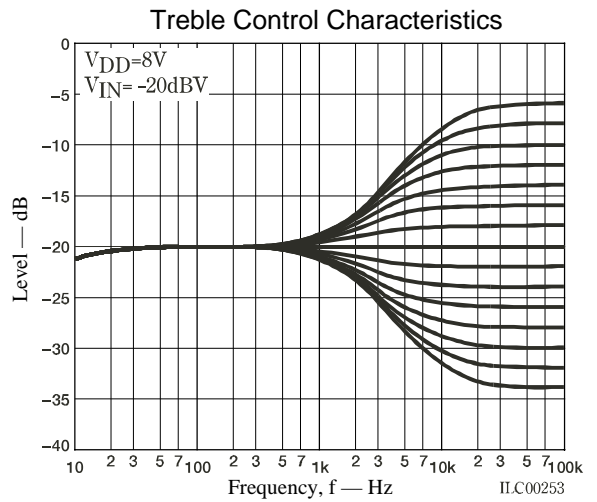
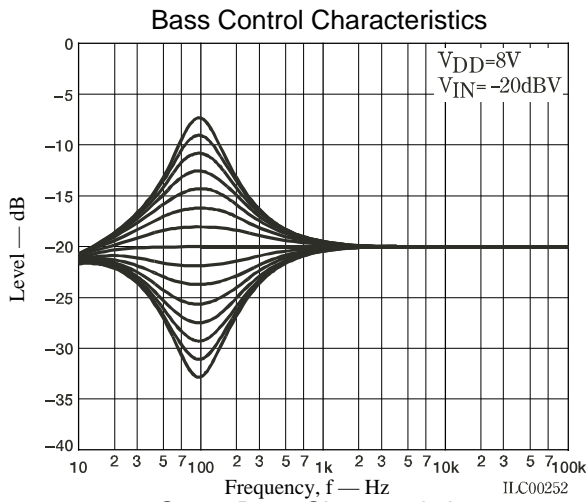
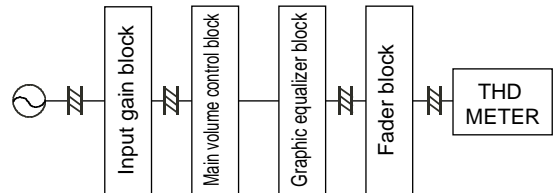
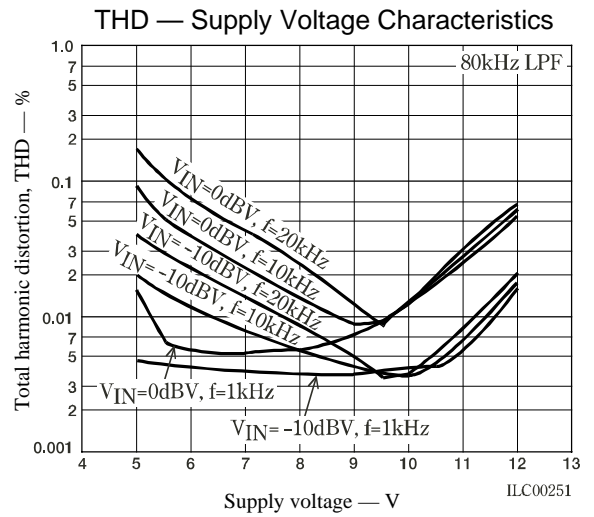
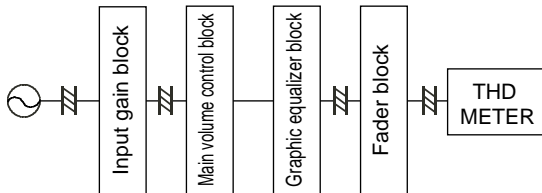
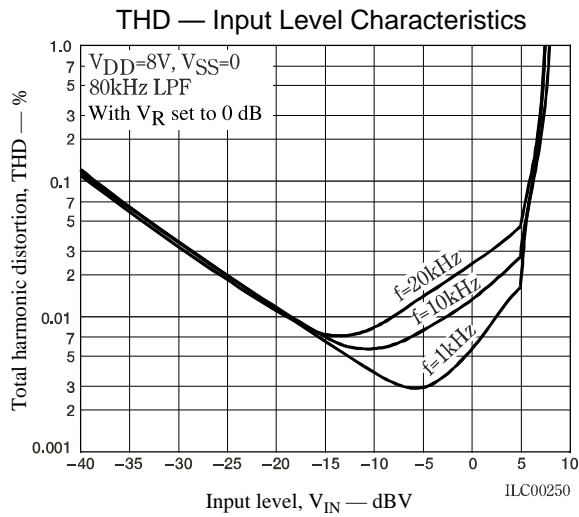


Fader Step Characteristics



THD — Frequency Characteristics





- Specifications of any and all SANYO products described or contained herein stipulate the performance, characteristics, and functions of the described products in the independent state, and are not guarantees of the performance, characteristics, and functions of the described products as mounted in the customer's products or equipment. To verify symptoms and states that cannot be evaluated in an independent device, the customer should always evaluate and test devices mounted in the customer's products or equipment.
- SANYO Electric Co., Ltd. strives to supply high-quality high-reliability products. However, any and all semiconductor products fail with some probability. It is possible that these probabilistic failures could give rise to accidents or events that could endanger human lives, that could give rise to smoke or fire, or that could cause damage to other property. When designing equipment, adopt safety measures so that these kinds of accidents or events cannot occur. Such measures include but are not limited to protective circuits and error prevention circuits for safe design, redundant design, and structural design.
- In the event that any or all SANYO products (including technical data, services) described or contained herein are controlled under any of applicable local export control laws and regulations, such products must not be exported without obtaining the export license from the authorities concerned in accordance with the above law.
- No part of this publication may be reproduced or transmitted in any form or by any means, electronic or mechanical, including photocopying and recording, or any information storage or retrieval system, or otherwise, without the prior written permission of SANYO Electric Co., Ltd.
- Any and all information described or contained herein are subject to change without notice due to product/technology improvement, etc. When designing equipment, refer to the "Delivery Specification" for the SANYO product that you intend to use.
- Information (including circuit diagrams and circuit parameters) herein is for example only; it is not guaranteed for volume production. SANYO believes information herein is accurate and reliable, but no guarantees are made or implied regarding its use or any infringements of intellectual property rights or other rights of third parties.

This catalog provides information as of February, 2001. Specifications and information herein are subject to change without notice.