

# KMS Series

## Microminiature Side Actuated Tact Switch for SMT

### Features/Benefits

- Compact size
- Excellent tactile feel
- Compatible with lead free soldering
- Grounded cover for EMC protection
- Date code marking

### Typical Applications

- Mobile phones, pagers
- PDAs
- Medical handheld monitors
- Consumer electronics
- Telecommunication networks



Tactile Switches

### Specification

FUNCTION: Momentary  
 CONTACT ARRANGEMENT: SPST, N.O.  
 TERMINALS: Gullwing type for SMT  
 IP40 Sealed

### Mechanical

MAXIMUM ACTUATING FORCE: 20 N (4.4lbs.) during 25,000 cycles.  
 ACTUATING FORCE: 2.5 N±25%  
 LIFE EXPECTANCY: 100,000 operations  
 TRAVEL TO MAKE: 0.3 mm±0.15 mm  
 TOTAL TRAVEL: 0.45 mm  
 SHEAR FORCE RESISTANCE: 50 N

### Packaging

Switches are delivered in tape and reels of 3,000 pieces. The reel diameter is 330 (12.992). The tape dimensions conform to the EIA-RS-481 and EC-286-6 norms.

**NOTE:** Specifications listed above are for switches with standard options.  
 For information on specific and custom switches, consult Customer Service Center.

### Electrical

	Silver	Gold
MAXIMUM POWER:	1 VA	0.2 VA
MAXIMUM VOLTAGE:	50 VDC	50 VDC
MAXIMUM CURRENT DC:	50 mA	10 mA
MINIMUM CURRENT DC:	1 mA	1 mA

DIELECTRIC STRENGTH: 250 VDC  
 LIFE EXPECTANCY: 100,000 operations  
 CONTACT RESISTANCE: ≤100 mΩ  
 INSULATION RESISTANCE: 10<sup>9</sup>Ω  
 BOUNCE TIME: ≤ 3 ms

### Environmental

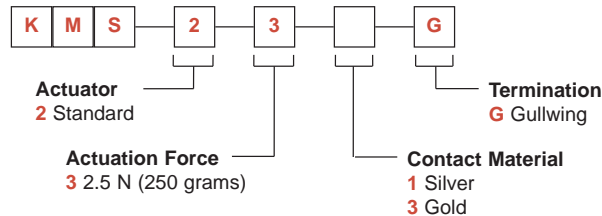
	Silver	Gold
OPERATING TEMPERATURE:	-40°C to 85°C	-40°C to 125°C
STORAGE TEMPERATURE:	-55°C to 85°C	-55°C to 125°C

### Process

Compatible with infrared reflow, lead free soldering and pick and place SMT machines.

### How To Order

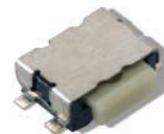
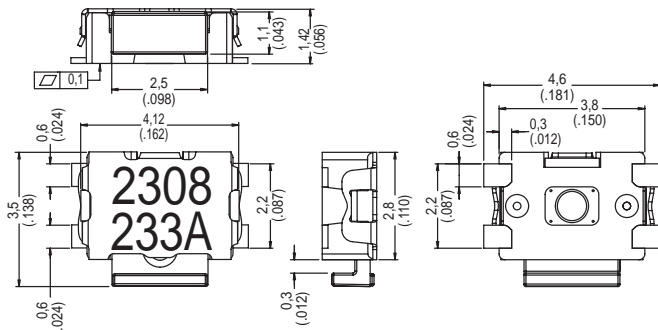
Our easy build-a-switch concept allows you to mix and match options to create the switch you need. To order, select desired option from each category and place it in the appropriate box.



# KMS Series Microminiature Side Actuated Tact Switch for SMT

## SERIES

**KMS**

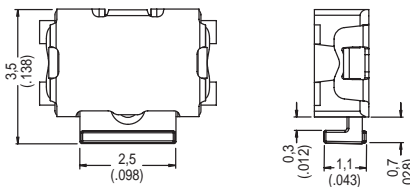


KMS231G

Each piece is date code printed:  
1st Line: **2308** = Year 2002, **308** is day in the year  
2nd Line: **233A** = Manufacturing code.

## ACTUATOR

**2** STANDARD



## ACTUATION FORCE

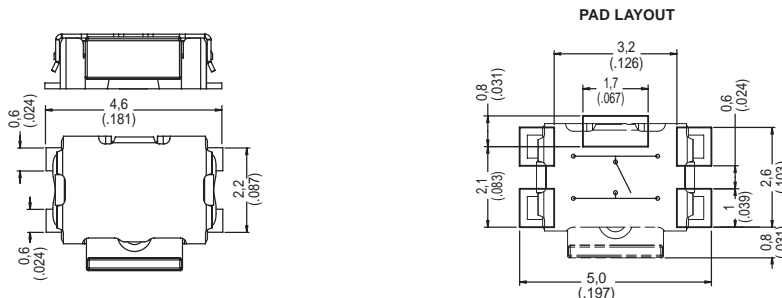
**3** 2.5 N (250 GRAMS)

## CONTACT MATERIAL

OPTION CODE	MATERIAL
<b>1</b>	SILVER
<b>3</b>	GOLD

## TERMINATION

**G** GULLWING

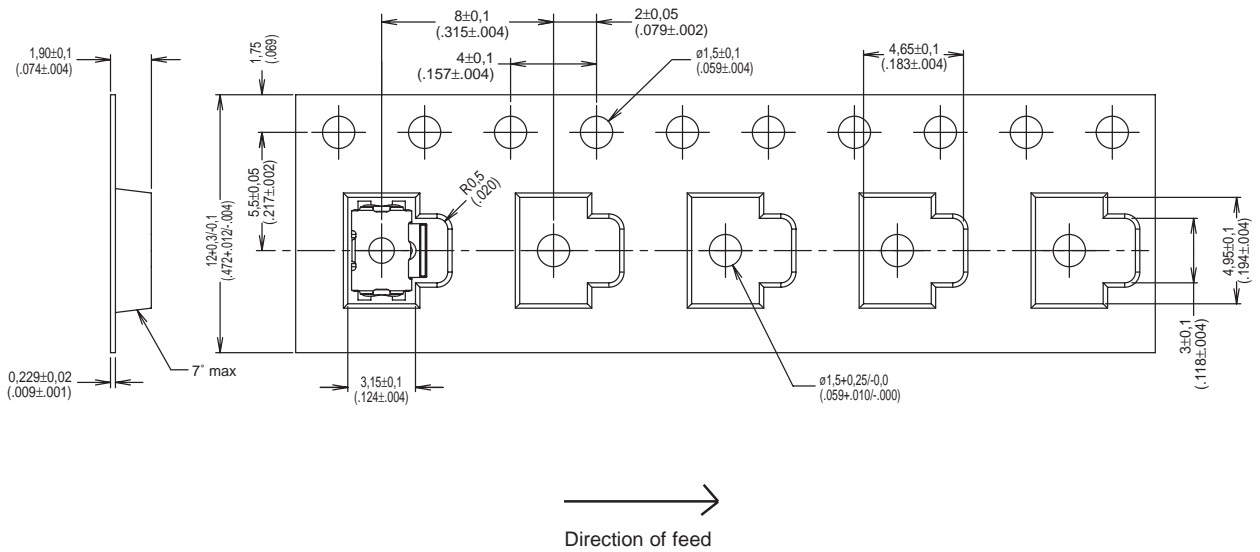


First Angle  
Projection

Dimensions are shown: mm (inch)  
Dimensions subject to change

# KMS Series Microminiature Side Actuated Tact Switch for SMT

## TAPE & REEL



Tactile Switches



B