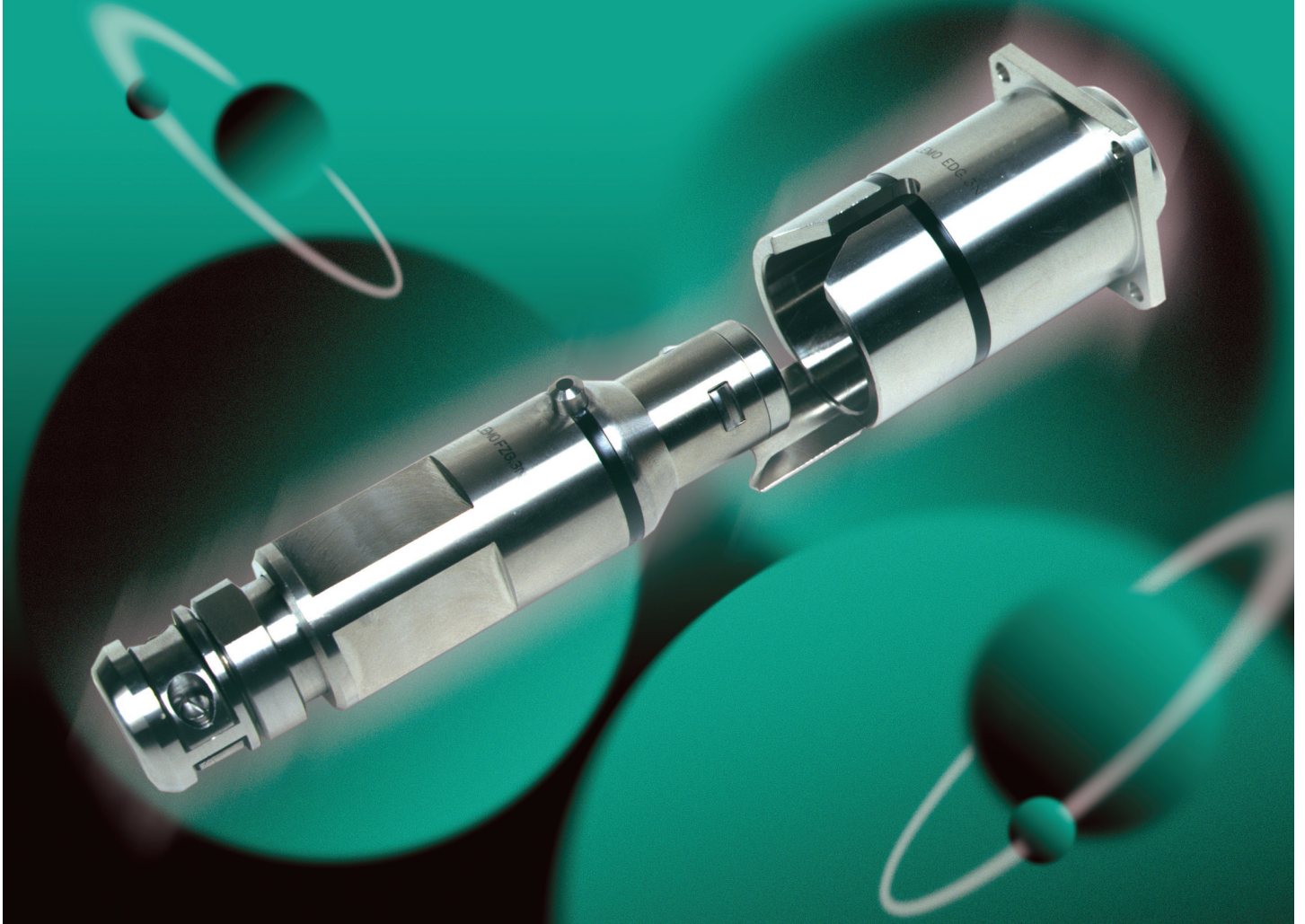


## N SERIES REMOTE HANDLING (Telemanipulator Connectors)



A range of remote handling stainless steel connectors suitable for operating in harsh environments such as nuclear reprocessing cells and the chemical industry. Features include alignment system and connection identification for ease of use.

### Features/Benefits

- Self-latching connection system based on K series.
- Easy handling and gripping with highly efficient pre-positioning.
- Reduced mating and unmating forces.
- Black visual indicator on plug and socket shell.
- Cable clamp on all plugs.
- Wide range of multiway, multicoax, fibre and hybrid contact configurations - from B Series range.
- Stainless steel or chrome-plated brass shell depending on application requirements.



## Specifications

### Shell material and Treatment

Component	Material (Standard)	Code		Surface treatment (µm)		
		C	T	Chrome		
				Cu	Ni	Cr
Outer shell, collet clamp, pre-positioning sleeve, washer	Brass (UNS C 38500)	●		0.5	3	0.3
	AISI 304		●	Without treatment		
Latch sleeve	Special brass	●		0.5	3	0.3
	Special stainless steel		●	Without treatment		
Earthing crown	Brass (UNS C 38500)	●		0.5	3	-
	AISI 304		●	Without treatment		
Pin, screw	Stainless steel	●	●	Without treatment		
Other metallic parts	Brass (UNS C 38500)	●	●	0.5	3	-
	AISI 304			Without treatment		
O-ring and gasket	Silicone	●		Without treatment		
Sealing resin (for ADL)	FPM (Viton®)	●		Without treatment		
Insulator	Epoxy	●	●	Without treatment		
	PEEK	●	●	without treatment		

### Note:

the surface treatment standards are as follows:

- chrome FS-QQ-C-320B
- nickel FS-QQ-N-290A

### Contacts

Solder or crimp as per LEMO B series program

### Types

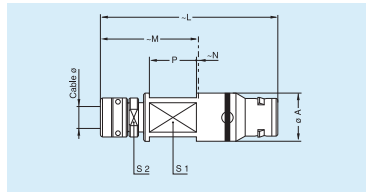
- Multipin, for all models

- Mixed coax + LV
  - Mixed HV + LV
  - Mixed F.O. + LV
- only for FZG, and EDG as per LEMO B series program size 3, 4 and 5.

Please visit the LEMO website for further information:

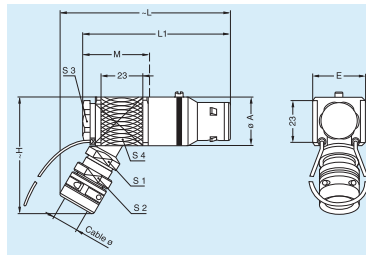


### Model(s) description



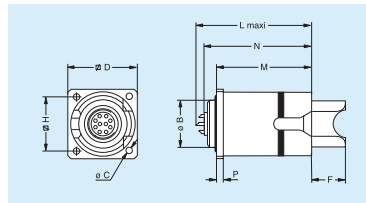
**FZG** Straight plug with positioning pin, cable clamp, and smooth handling surface

Series	A	L	M	N	P	S1	S2	Cable ø maxi
3N	25	103	55	1	25	21	20	12,0
4N	31	112	62	1	30	26	25	17,0
5N	45	155	90	1	50	39	40	28,5



**FMG** Elbow plug (120°) with positioning pin, cable clamp and rough narrow handling surface

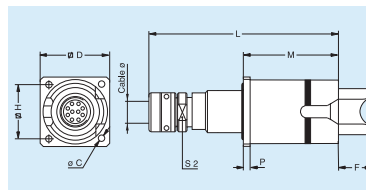
Series	A	E	H	L	L1	M	S1	S2	S3	S4	Cable ø maxi
4N	31	36	76	109	92,5	42,8	22	25	24	30	17,0
5N	45	48	117	154	131,5	65,5	36	40	38	42	28,5



**EDG** Straight socket with square flange, 4 screw fixing, with long pre-positioning sleeve. Without earthing crown

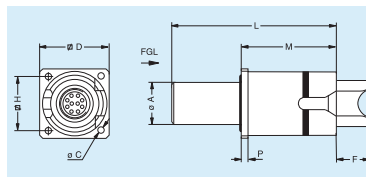
Series	B	C	D	F	H	L	M	N <sup>1)</sup>	P
3N	24	3,2	34	18,5	27	63,6	50	58,5	3
4N	30	4,2	43	20,0	35	69,6	54	64,5	4
5N	45	5,2	58	28,0	46	86,1	66	79,0	5

Note: <sup>1)</sup> max. length with crimp contacts.



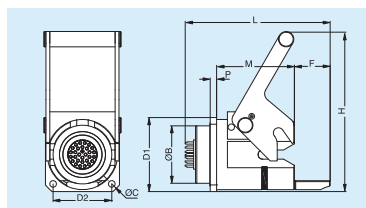
**PBG** Fixed socket with square flange, 4 screw fixing, with long pre-positioning sleeve and cable clamp. Without earthing crown.

Series	A	C	D	F	H	L	M	P	S2	Cable ø maxi
3N	24	3,2	34	18,5	27	108	50	3	20	12,0
4N	30	4,2	43	20,0	35	120	54	4	25	17,0
5N	45	5,2	58	28,0	46	157	66	5	40	28,5



**ADL** Fixed adaptor with square flange, 4 screw fixing, with long pre-positioning sleeve. Adapter for FGL K series plugs. Vacuumtight. Without earthing crown.

Series	A	C	D	F	H	L	M	P
3N	24	3,2	34	18,5	27	92,0	50	3
4N	30	4,2	43	20,0	35	104,2	54	4
5N	45	5,2	58	28,0	46	126,5	66	5



**EDY** Fixed socket for remote handling with square flange and lever. Without earthing crown.

Series	B	C	D1	D2	F	H	L	M	P
3N	24	3,2	34	27	18,5	85,5	80,5	47	3
4N	30	4,2	43	35	20	97,5	90	50	4
5N	45	5,2	58	46	28	125,5	117,5	61	5

LEMO UK Ltd

12 - 20 North Street

Worthing

West Sussex

BN11 1DU

Tel: 01903 234543

Fax: 01903 206231

e-mail: uksales@lemo.com



www.lemo.co.uk