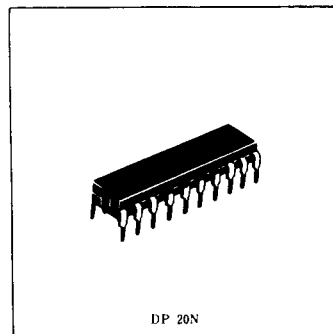


## 16384-word x 1-bit High Speed CMOS Static RAM

### FEATURES

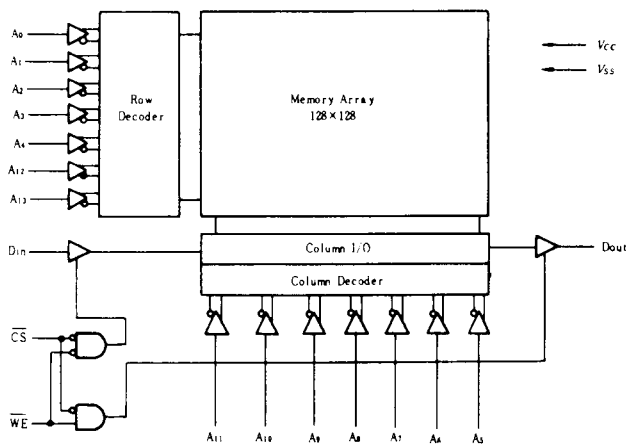
- Single +5V Supply and High Density 20 Pin Package
- Fast Access Time – 85ns/100ns
- Low Power Stand-by and Low Power Operation  
Stand-by  $100\mu\text{W}$  typ./ $5\mu\text{W}$  typ. (L-version)  
and Operating  $150\text{mW}$  typ.
- Completely Static Memory . . . . . No Clock nor Refresh Required
- Fully TTL Compatible – All Inputs and Output
- Separate Data Input and Output . . . . . Three State Output
- Pin-Out Compatible with Intel 2167 Series
- Capability of Battery Back Up Operation (L-version)



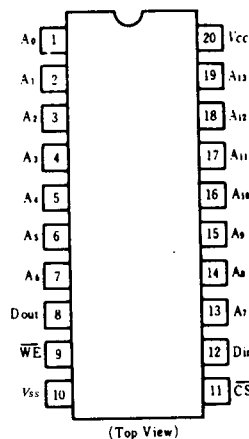
### ORDERING INFORMATION

Type No.	Access Time	Package
HM6167P-6	85ns	300mil 20pin Plastic DIP
HM6167P-8	100ns	
HM6167LP-6	85ns	
HM6167LP-8	100ns	

### BLOCK DIAGRAM



### PIN ARRANGEMENT



### ABSOLUTE MAXIMUM RATINGS

Item	Symbol	Rating	Unit
Terminal Voltage with Respect to $V_{SS}$	$V_T$	$-0.5^{*1}$ to $+7.0$	V
Power Dissipation	$P_T$	1.0	W
Operating Temperature	$T_{opr}$	0 to $+70$	$^{\circ}\text{C}$
Storage Temperature	$T_{stg}$	$-55$ to $+125$	$^{\circ}\text{C}$
Storage Temperature under bias	$T_{stg(bias)}$	$-10$ to $+85$	$^{\circ}\text{C}$

Note) \*1.  $-3.5\text{V}$  for pulse width  $\leq 20\text{ns}$ .

RECOMMENDED DC OPERATING CONDITIONS

(0°C ≤ Ta ≤ 70°C)

Item	Symbol	min	typ	max	Unit
Supply Voltage	V <sub>CC</sub>	4.5	5.0	5.5	V
	V <sub>SS</sub>	0	0	0	V
Input High Voltage	V <sub>IH</sub>	2.2	—	6.0	V
Input Low Voltage	V <sub>IL</sub>	-0.3 <sup>*1</sup>	—	0.8	V

Note) \*1. -3.0V for pulse width ≤ 20ns.

TRUTH TABLE

$\overline{CS}$	$\overline{WE}$	Mode	V <sub>CC</sub> Current	Output Pin	Reference Cycle
H	x	Not Selected	I <sub>SB</sub> , I <sub>SB1</sub>	High Z	
L	H	Read	I <sub>CC</sub>	Dout	Read Cycle 1, 2
L	L	Write	I <sub>CC</sub>	High Z	Write Cycle 1, 2

DC AND OPERATING CHARACTERISTICS (V<sub>CC</sub> = 5V ± 10%, Ta = 0°C to +70°C)

Item	Symbol	Test Conditions	min	typ <sup>*1</sup>	max	Unit
Input Leakage Current	I <sub>LI</sub>	V <sub>CC</sub> = 5.5V, V <sub>IN</sub> = 0V ~ V <sub>CC</sub>	—	—	2	μA
Output Leakage Current	I <sub>LO</sub>	$\overline{CS}$ = V <sub>IH</sub> , V <sub>OUT</sub> = 0V ~ V <sub>CC</sub>	—	—	2	μA
Operating Power Supply Current	I <sub>CC</sub>	$\overline{CS}$ = V <sub>IL</sub> , Output Open	—	30	60	mA
Standby Power Supply Current	I <sub>SB</sub>	$\overline{CS}$ = V <sub>IH</sub>	—	5	20	mA
	I <sub>SB1</sub>	$\overline{CS}$ = V <sub>CC</sub> - 0.2V	—	0.02	2	mA
		V <sub>IN</sub> ≤ 0.2V or V <sub>IN</sub> ≥ V <sub>CC</sub> - 0.2V	—	—	1 <sup>*2</sup>	50 <sup>*2</sup>
Output Low Voltage	V <sub>OL</sub>	I <sub>OL</sub> = 8mA	—	—	0.4	V
Output High Voltage	V <sub>OH</sub>	I <sub>OH</sub> = -4mA	2.4	—	—	V

Notes) \*1. Typical limits are at V<sub>CC</sub> = 5.0V, Ta = 25°C and specified loading.  
 \*2. This characteristics is guaranteed only for L-version.

CAPACITANCE (Ta = 25°C, f = 1.0MHz)

Item	Symbol	max	Unit	Conditions
Input Capacitance	C <sub>IN</sub>	5	pF	V <sub>IN</sub> = 0V
Output Capacitance	C <sub>OUT</sub>	6	pF	V <sub>OUT</sub> = 0V

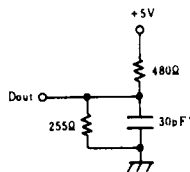
Note) This parameter is sampled and not 100% tested.

AC CHARACTERISTICS (V<sub>CC</sub> = 5V ± 10%, Ta = 0 to +70°C, unless otherwise noted)

AC TEST CONDITIONS

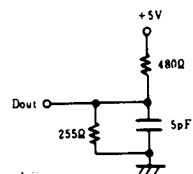
Input pulse levels: V<sub>SS</sub> to 3.0V  
 Input rise and fall times: 5 ns  
 Input timing reference levels: 1.5V  
 Output reference levels: 1.5V  
 Output load: See Figure

Output Load A



Output Load B

(for t<sub>HZ</sub>, t<sub>LZ</sub>, t<sub>wz</sub> & t<sub>ow</sub>)



\* Including scope and jig.



● READ CYCLE

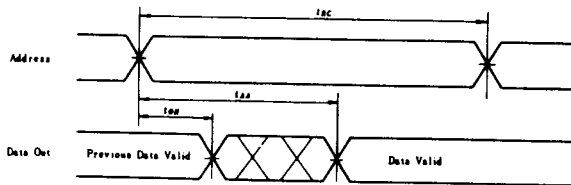
Item	Symbol	HM6167-6		HM6167-8		Unit
		min	max	min	max	
Read Cycle Time	$t_{RC}$	85	—	100	—	ns
Address Access Time	$t_{AA}$	—	85	—	100	ns
Chip Select Access Time	$t_{ACS}$	—	85	—	100	ns
Output Hold from Address Change	$t_{OH}$	5	—	5	—	ns
Chip Selection to Output in Low Z	$t_{LZ}$	5	—	5	—	ns
Chip Deselection to Output in High Z	$t_{HZ}$	0	40	0	40	ns
Chip Selection to Power Up Time	$t_{PU}$	0	—	0	—	ns
Chip Deselection to Power Down Time	$t_{PD}$	—	40	—	45	ns

● WRITE CYCLE

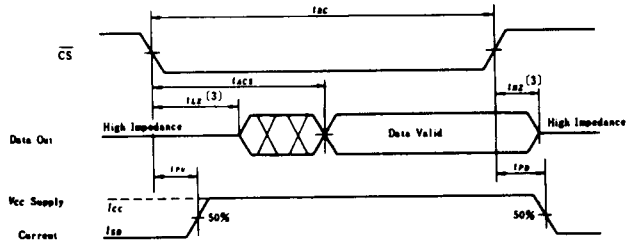
Item	Symbol	HM6167-6		HM6167-8		Unit	Notes
		min	max	min	max		
Write Cycle Time	$t_{WC}$	85	—	100	—	ns	2
Chip Selection to End of Write	$t_{CW}$	65	—	80	—	ns	
Address Valid to End of Write	$t_{AW}$	65	—	80	—	ns	
Address Setup Time	$t_{AS}$	0	—	0	—	ns	
Write Pulse Width	$t_{WP}$	45	—	55	—	ns	
Write Recovery Time	$t_{WR}$	0	—	0	—	ns	
Data Valid to End of Write	$t_{DW}$	35	—	40	—	ns	
Data Hold Time	$t_{DH}$	0	—	0	—	ns	
Write Enable to Output in High Z	$t_{WZ}$	0	40	0	40	ns	3, 4
Output Active from End of Write	$t_{OW}$	0	—	0	—	ns	3, 4

- Notes) 1. If  $\overline{CS}$  goes high simultaneously with  $\overline{WE}$  high, the output remains in a high impedance state.  
 2. All Write Cycle timings are referenced from the last valid address to the first transitioning address.  
 3. Transition is measured  $\pm 500\text{mV}$  from steady state voltage with specified loading in Load B.  
 4. This parameter is sampled and not 100% tested.

● TIMING WAVEFORM OF READ CYCLE NO.1<sup>1)</sup>

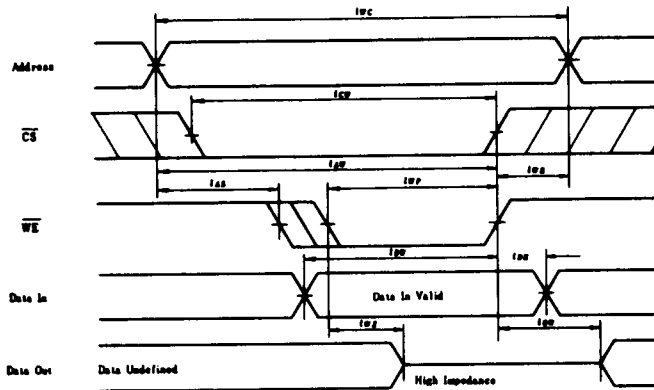


● TIMING WAVEFORM OF READ CYCLE NO. 2 <sup>1), 3)</sup>

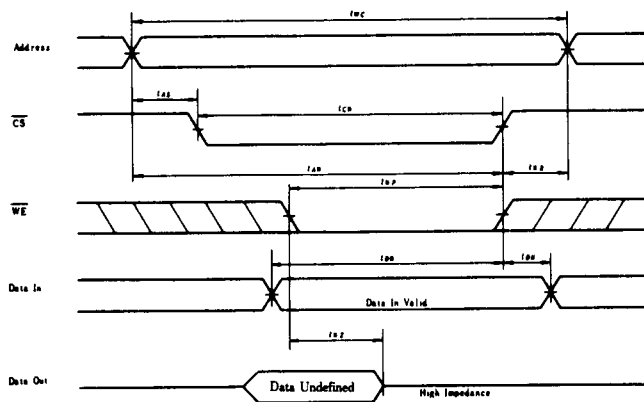


- NOTES: 1.  $\overline{WE}$  is high and  $\overline{CS}$  is low for READ cycle.  
 2. Addresses valid prior to or coincident with  $\overline{CS}$  transition low.  
 3. Transition is measured  $\pm 500$ mV from steady state voltage with specified loading in Load B.

● TIMING WAVEFORM OF WRITE CYCLE NO. 1 ( $\overline{WE}$  Controlled)



● TIMING WAVEFORM OF WRITE CYCLE No. 2 ( $\overline{CS}$  Controlled)



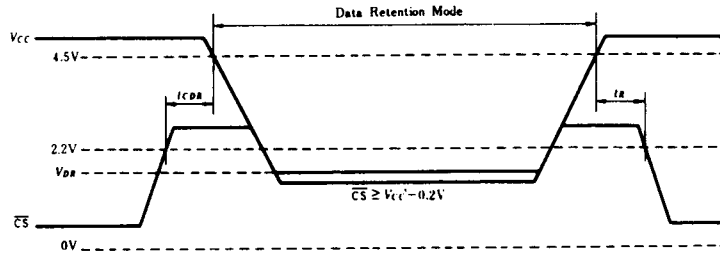
**LOW V<sub>CC</sub> DATA RETENTION CHARACTERISTICS (T<sub>a</sub>=0°C to +70°C)**

This characteristics is guaranteed only for L-version.

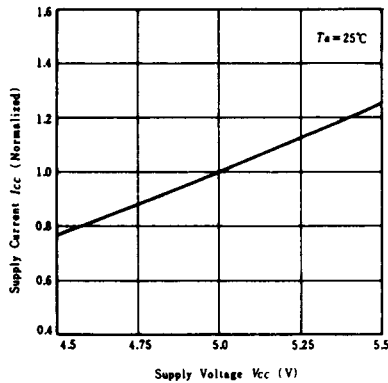
Parameter	Symbol	Test Condition	min	typ	max	Unit
V <sub>CC</sub> for Data Retention	V <sub>DR</sub>	$\overline{CS} \geq V_{CC} - 0.2V$ $V_{i1} \geq V_{CC} - 0.2V$ or $0V \leq V_{i1} \leq 0.2V$	2.0	—	—	V
Data Retention Current	I <sub>CCDR</sub>		—	—	20*2	μA
Chip Deselect to Data Retention Time	t <sub>CDR</sub>		—	—	30*3	
Operation Recovery Time	t <sub>R</sub>		t <sub>AC</sub> *1	—	—	ns

Notes) \*1. t<sub>AC</sub>—Read Cycle Time      \*2. V<sub>CC</sub>=2.0V  
 \*3. V<sub>CC</sub>=3.0V

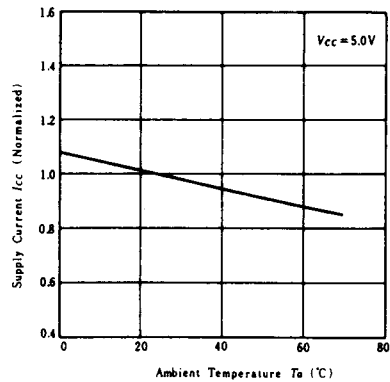
**LOW V<sub>CC</sub> DATA RETENTION WAVEFORM**



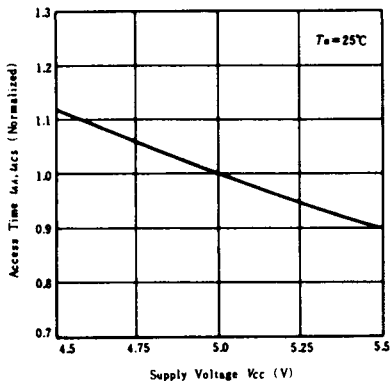
**SUPPLY CURRENT vs. SUPPLY VOLTAGE**



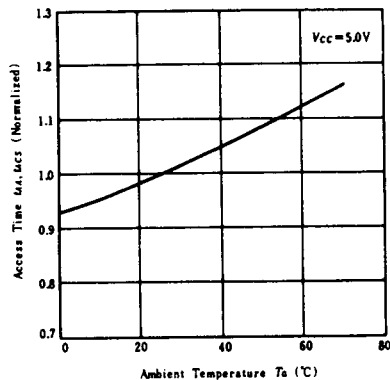
**SUPPLY CURRENT vs. AMBIENT TEMPERATURE**



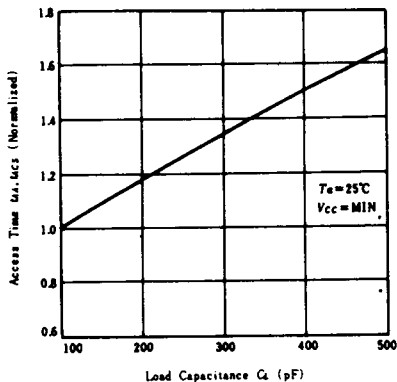
**ACCESS TIME vs. SUPPLY VOLTAGE**



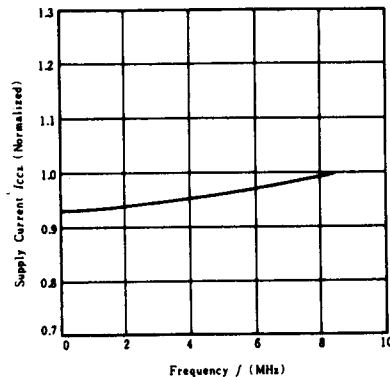
**ACCESS TIME vs. AMBIENT TEMPERATURE**



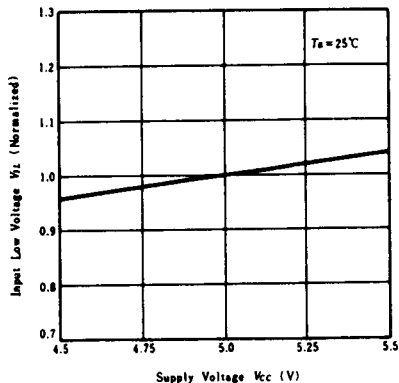
**ACCESS TIME vs. LOAD CAPACITANCE**



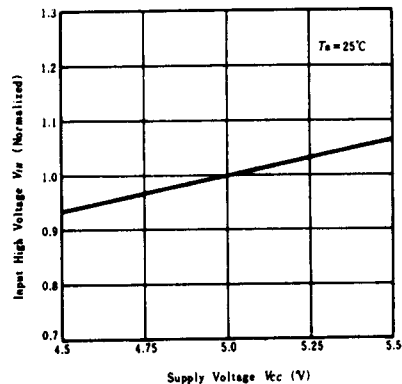
**SUPPLY CURRENT vs. FREQUENCY**



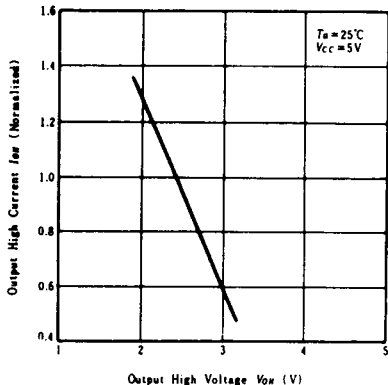
**INPUT LOW VOLTAGE vs. SUPPLY VOLTAGE**



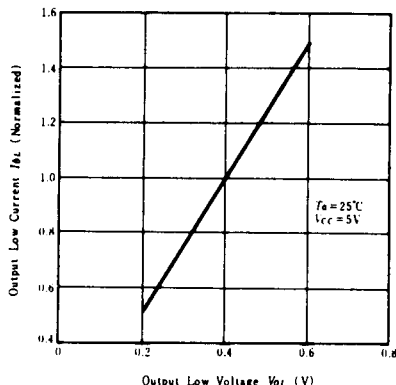
**INPUT HIGH VOLTAGE vs. SUPPLY VOLTAGE**



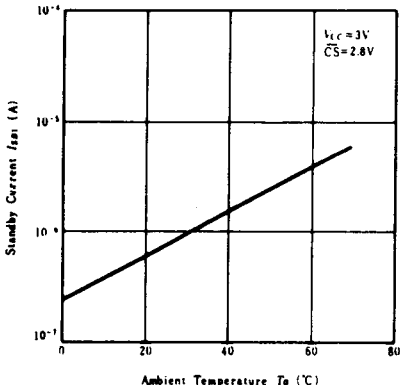
**OUTPUT HIGH CURRENT vs. OUTPUT HIGH VOLTAGE**



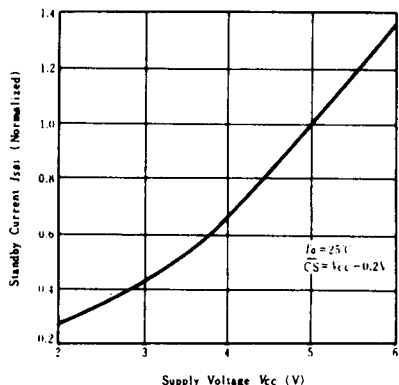
**OUTPUT LOW CURRENT vs. OUTPUT LOW VOLTAGE**



**STANDBY CURRENT vs. AMBIENT TEMPERATURE**



**STANDBY CURRENT vs. SUPPLY VOLTAGE**



**STANDBY CURRENT vs. INPUT VOLTAGE**

