

GD54/74LS21

DUAL 4-INPUT POSITIVE AND GATES

Description

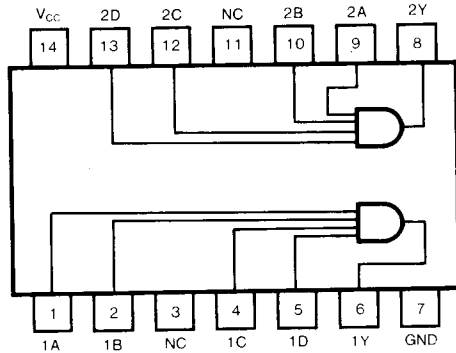
This device contains two independent 4-input AND gates. It performs the Boolean functions $Y = A \cdot B \cdot C \cdot D$ or $Y = \overline{A + B + C + D}$ in positive logic.

Function Table (each gate)

INPUTS		OUTPUT
A	N*	Y
L	L	L
H	L	L
L	H	L
H	H	H

* $N = B \cdot C \cdot D$

Pin Configuration



Suffix-Blank: Plastic Dual In Line Package
 Suffix-J : Ceramic Dual In Line Package

Circuit Schematics (each gate)

