

D41D1 D41D7 D41D13
D41D2 D41D8 D41D14
D41D4 D41D10
D41D5 D41D11

**PNP SILICON
POWER TRANSISTOR**



www.centrasemi.com

DESCRIPTION:

The CENTRAL SEMICONDUCTOR D41D series types are PNP silicon power transistors designed for amplifier and switching applications. The NPN complementary types are the D40D series.

MARKING: FULL PART NUMBER



MAXIMUM RATINGS: (T _C =25°C)	SYMBOL	D41D1	D41D4	D41D7	D41D10	UNITS
		D41D2	D41D5	D41D8	D41D11 D41D13 D41D14	
Collector-Emitter Voltage	V _{CES}	45	60	75	90	V
Collector-Emitter Voltage	V _{CEO}	30	45	60	75	V
Emitter-Base Voltage	V _{EBO}			5.0		V
Continuous Collector Current	I _C			1.0		A
Peak Collector Current	I _{CM}			1.5		A
Power Dissipation	P _D			6.25		W
Operating and Storage Junction Temperature	T _J , T _{stg}			-65 to +150		°C
Thermal Resistance	θ _{JC}			20		°C/W

ELECTRICAL CHARACTERISTICS: (T_C=25°C unless otherwise noted)

SYMBOL	TEST CONDITIONS	MIN	MAX	UNITS
I _{CES}	V _{CE} =Rated V _{CES}		100	nA
I _{EBO}	V _{EB} =5.0V		100	nA
BV _{CEO}	I _C =10mA (D41D1, 2)	30		V
BV _{CEO}	I _C =10mA (D41D4, 5)	45		V
BV _{CEO}	I _C =10mA (D41D7, 8)	60		V
BV _{CEO}	I _C =10mA (D41D10, 11, 13, 14)	75		V
V _{CE(SAT)}	I _C =500mA, I _B =50mA (D41D1, 2, 4, 5)		0.5	V
V _{CE(SAT)}	I _C =500mA, I _B =50mA (D41D7, 8, 10, 11, 13, 14)		1.0	V
V _{BE(SAT)}	I _C =500mA, I _B =50mA		1.5	V

	TEST CONDITIONS	D41D1 D41D4 D41D7 D41D10 D41D13		D41D2 D41D5 D41D8 D41D11 D41D14	
		MIN	MAX	MIN	MAX
h _{FE}	V _{CE} =2.0V, I _C =100mA	50	150	120	300
h _{FE}	V _{CE} =2.0V, I _C =1.0A (Except D40D13, 14)	10	-	20	-

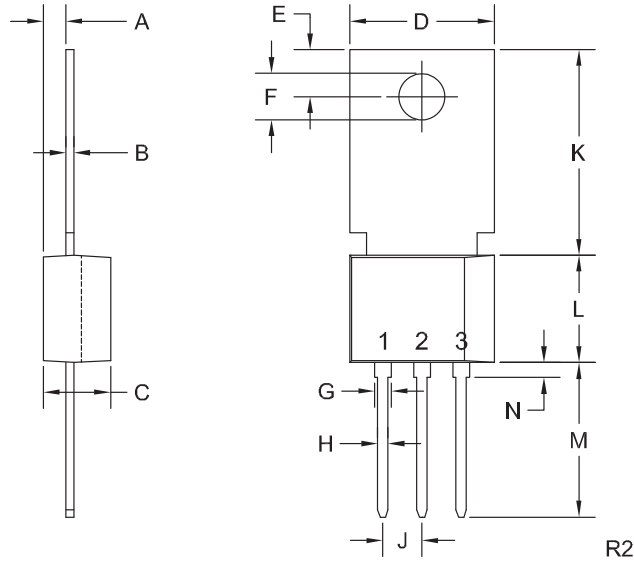
R1 (23-January 2012)

D41D1 D41D7 D41D13
 D41D2 D41D8 D41D14
 D41D4 D41D10
 D41D5 D41D11

PNP SILICON
 POWER TRANSISTOR



TO-202 CASE - MECHANICAL OUTLINE



LEAD CODE:

- 1) Emitter
 - 2) Base
 - 3) Collector
- Tab is common to pin 3

MARKING:

FULL PART NUMBER

SYMBOL	INCHES		MILLIMETERS	
	MIN	MAX	MIN	MAX
A	0.055	0.071	1.40	1.80
B	0.016	0.024	0.40	0.60
C	0.173	0.181	4.40	4.60
D	0.374	0.413	9.50	10.5
E	0.118	0.154	3.00	3.90
F (DIA)	0.124	0.150	3.15	3.80
G	0.035	0.055	0.90	1.40
H	0.023	0.031	0.59	0.80
J	0.094	0.106	2.39	2.69
K	0.459	0.559	11.66	14.21
L	0.280	0.346	7.12	8.80
M	0.406	0.531	10.3	13.5
N	0.024	0.059	0.60	1.50

TO-202 (REV: R2)

R1 (23-January 2012)