

500mA, 3.3V Linear Regulator with Auxiliary Control

Description

The CS5231-3 combines a three-terminal linear regulator with circuitry to control an external PFET transistor with the intent of managing two input supplies. A 5V supply powers the regulator while an auxiliary 3.3V supply is controlled by the IC. The design has been optimized to provide a "glitch-free" transition between the two supplies.

The CS5231-3 linear regulator provides a fixed 3.3V output @ 500mA with an overall accuracy of $\pm 2\%$. The NPN-PNP composite pass transistor provides a low dropout voltage and requires less supply current than PNP designs. Full protection including current limit and thermal shutdown is provided. Also designed for low reverse current, the IC prevents excessive cur-

rent from flowing from the output to ground if the regulator input voltage is lower than the output voltage.

The CS5231-3 also controls an auxiliary supply that can provide power to the regulator output when input voltage for the regulator is not available. The AuxDrv auxiliary output is normally pulled up to the regulator input voltage and drives low whenever the input voltage drops below 4.4V (nominal). It is typically used to control a PFET switch that connects a 3.3V auxiliary supply to the regulator output.

The CS5231-3 is available in a 5-lead D²PAK (TO-263) package. Applications include Network Interface Cards (NICs), modem cards and power supplies with multiple input sources.

Features

Linear Regulator

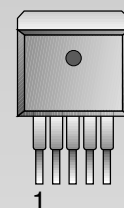
- 3.3V $\pm 2\%$ Output Voltage
- 3mA Quiescent Current @ 500mA
- Fast Transient Response
- Current Limit
- Thermal Shutdown with Hysteresis
- 450 μ A Reverse Output Current
- Fast Transient Response

System Power Management

- Auxiliary Supply Control

Package Options

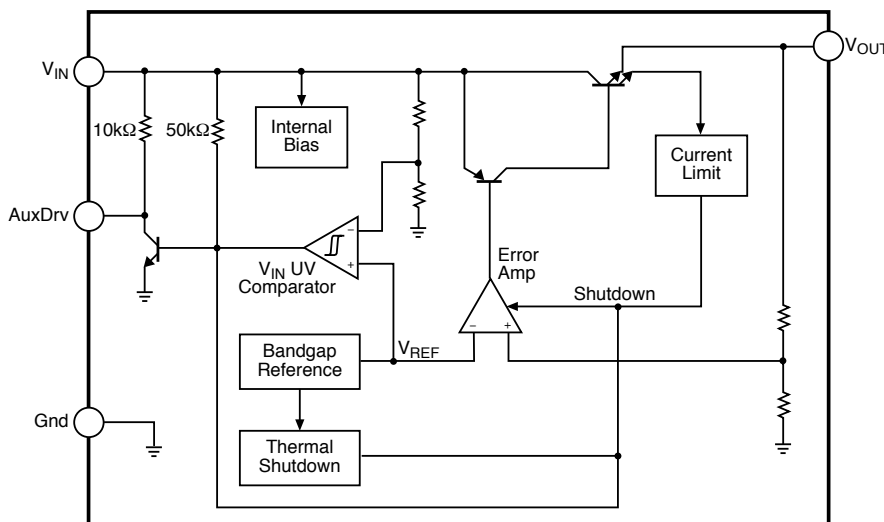
5 Lead D²PAK



1. No Connect
2. V_{IN}
3. Gnd
4. V_{OUT}
5. AuxDrv
- Tab = Gnd

Consult factory for other package options.

Block Diagram



Absolute Maximum Ratings

| | |
|---|--------------------------------------|
| Maximum Operating Junction Temperature | 150°C |
| Storage Temperature Range | -65°C to +150°C |
| Lead Temperature Soldering | |
| Reflow (SMD styles only) | .60 sec. max above 183°C, 230°C peak |
| ESD Damage Threshold (Human Body Model) | 2kV |

| PIN SYMBOL | PIN NAME | V _{MAX} | V _{MIN} | I _{SOURCE} | I _{SINK} |
|------------------|------------------------|------------------|------------------|---------------------|--------------------|
| V _{IN} | IC Power Input | 14V | -0.3V | 100mA | Internally Limited |
| V _{OUT} | Output Voltage | 6V | -0.3V | Internally Limited | 100mA |
| AuxDrv | Auxiliary Drive Output | 14V | -0.3V | 10mA | 50mA |
| Gnd | IC Ground | N/A | N/A | N/A | N/A |

Electrical Characteristics: 0°C < T_A < 70°C, 0°C < T_J < 125°C, 4.75V ≤ V_{CC} < 6V, C_{OUT} ≥ 10μF with ESR < 1Ω, I_{OUT} = 10mA, unless otherwise specified.

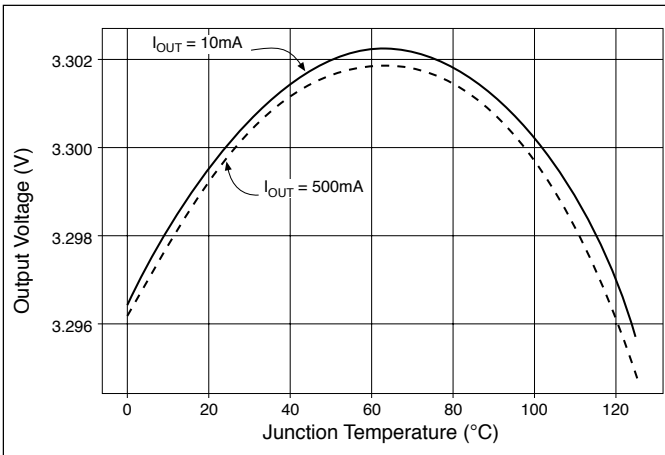
| PARAMETER | TEST CONDITIONS | MIN | TYP | MAX | UNIT |
|--------------------------------------|--|--------------|--------|--------------|----------|
| ■ Linear Regulator | | | | | |
| Output Voltage | 10mA < I _{OUT} < 500mA | 3.234 -2% | 3.300 | 3.366 +2% | V |
| Line Regulation | I _{OUT} = 10mA, V _{IN} = 4.75V to 6V | | 1 | 5 | mV |
| Load Regulation | V _{IN} = 5V, I _{OUT} = 10mA to 500mA | | 5 | 15 | mV |
| Ground Current | I _{OUT} = 10mA I _{OUT} = 500mA | | 2 3 | 3 6 | mA mA |
| Reverse Current | V _{IN} = 0V, V _{OUT} = 3.3V | | 0.45 | 1 | mA |
| Current Limit | 0V < V _{OUT} < 3.2V | 0.55 | 0.85 | 1.2 | A |
| Thermal Shutdown | Note 1 | 150 | 180 | 210 | °C |
| Thermal Shutdown Hysteresis | Note 1 | | 25 | | °C |
| ■ Auxiliary Drive | | | | | |
| Upper V _{IN} Threshold | Increase V _{IN} until regulator turns on and AuxDrv drives high | 4.35 | 4.5 | 4.65 | V |
| Lower V _{IN} Threshold | Decrease V _{IN} until regulator turns off and AuxDrv drives low | 4.25 | 4.4 | 4.55 | V |
| V _{IN} Threshold Hysteresis | | 75 | 100 | 125 | mV |
| Output Low Voltage | I _{AuxDrv} = 100μA, 1V < V _{IN} < 4.5V | | 0.1 | 0.4 | V |
| Output Low Peak Voltage | Increase V _{IN} from 0V to 1V. Record peak AuxDrv output voltage | | 0.65 | 0.9 | V |
| AuxDrv Current Limit | V _{AuxDrv} = 1V, V _{IN} = 4.0V | 0.5 | 6 | 25 | mA |
| Response Time | Step V _{IN} from 5V to 4V, measure time for V _{AuxDrv} to drive low. Note 1 | | 1 | 10 | μs |
| Pull-Up/Down Resistance | V _{IN} = 0V and V _{IN} > 4.7V | 5 | 10 | 25 | kΩ |

Note 1: Guaranteed by design, not 100% production tested. Thermal shutdown is 100% functionally tested at wafer probe.

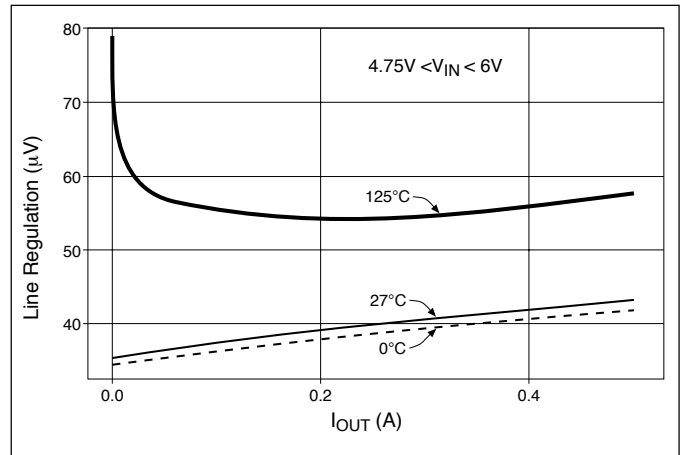
Package Pin Description

| PACKAGE PIN # | PIN SYMBOL | FUNCTION |
|--------------------------------|------------|--|
| 5Lead D² PAK | | |
| 1 | N/C | No connection. |
| 2 | V_{IN} | Input voltage. |
| 3 | Gnd | Ground and IC substrate connection (case). |
| 4 | V_{OUT} | Regulated output voltage. |
| 5 | AuxDrv | Output used to control an auxiliary supply voltage. This lead is driven low if V_{IN} is less than 4.5V, and is otherwise pulled up to V_{IN} through an internal 10k Ω resistor. |

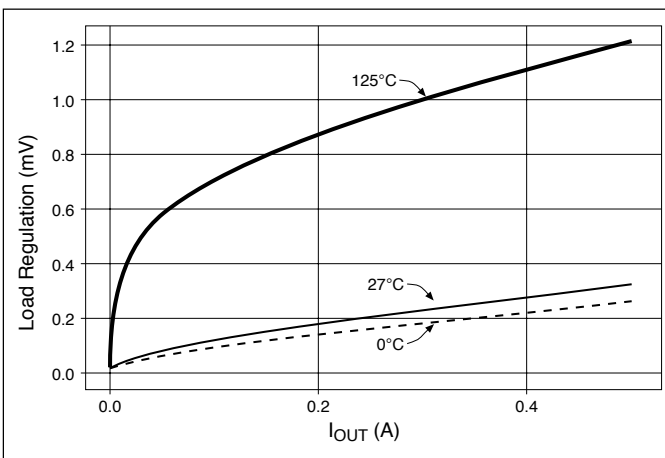
Typical Performance Characteristics



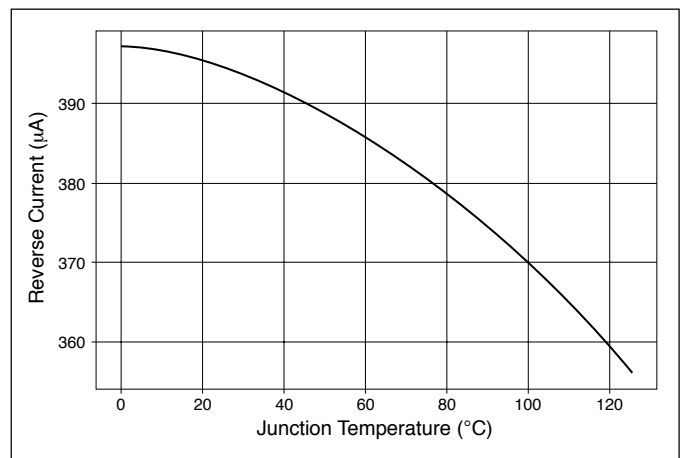
Output Voltage vs. Junction Temperature



Line Regulation vs. I_{OUT} Over Temperature

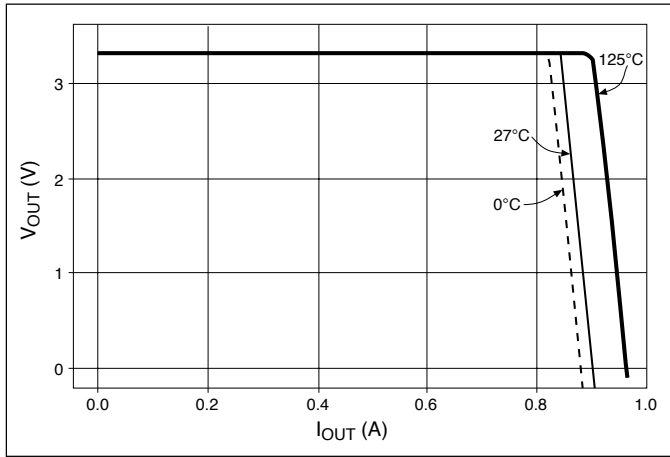


Load Regulation vs. I_{OUT} Over Temperature

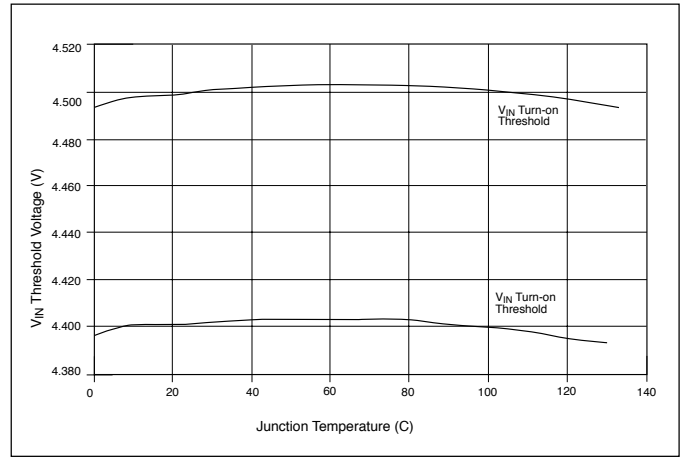


Reverse Current vs. Junction Temperature

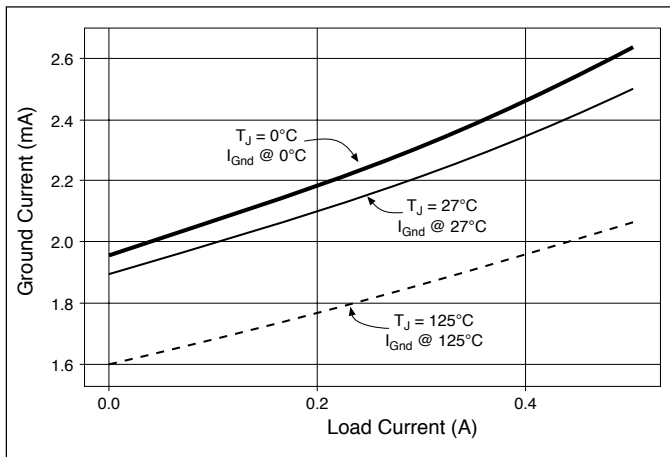
Typical Performance Characteristics: continued



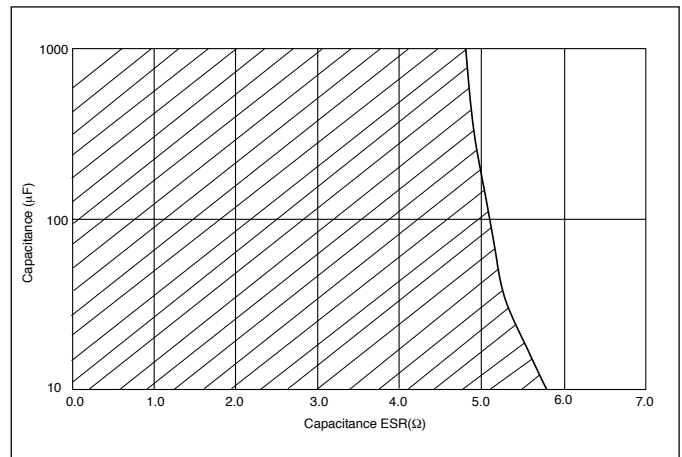
V_{OUT} vs. I_{OUT} Over Temperature



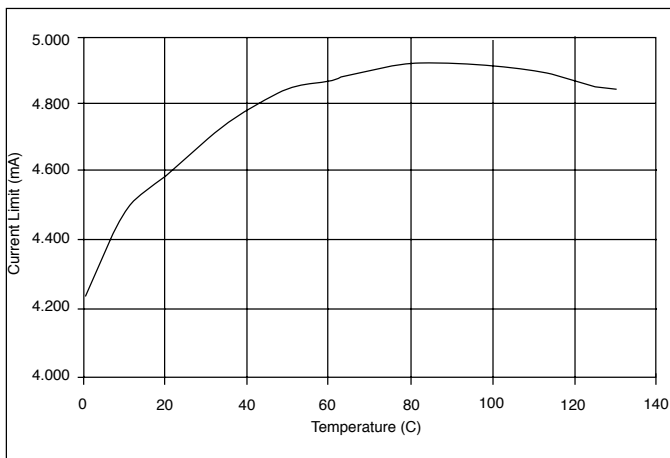
V_{IN} Thresholds vs. Junction Temperature



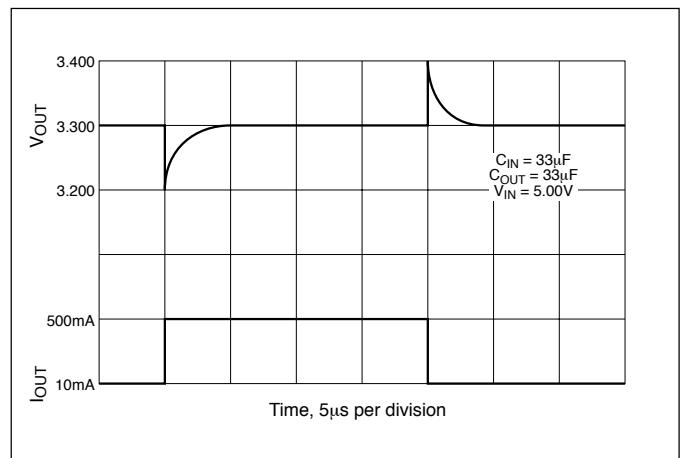
Ground Current vs. Load Current



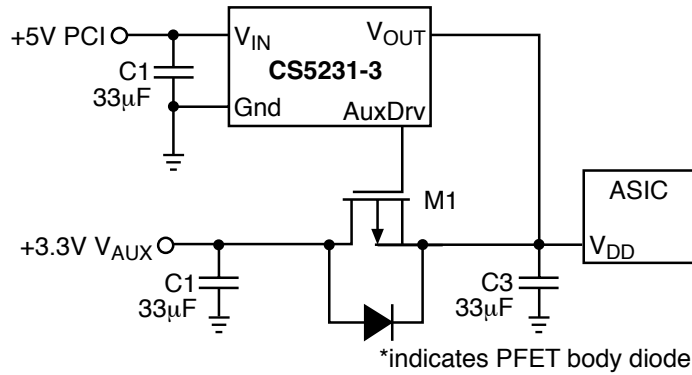
Region of Stable Operation



AuxDrv Current Limit vs. Junction Temperature



Transient Response



Application Information

Theory of Operation

The CS5231-3 is a fixed 3.3V linear regulator that contains an auxiliary drive control feature. When V_{IN} is greater than the typical 4.5V threshold, the IC functions as a linear regulator. It provides up to 500mA of current to a load through a composite PNP-NPN pass transistor. An output capacitor greater than $10\mu\text{F}$ with equivalent series resistance less than 1Ω is required for compensation. More information is provided in the Stability Considerations section.

The CS5231-3 provides an auxiliary drive feature that allows a load to remain powered even if the V_{IN} supply for the IC is absent. An external p-channel FET is the only additional component required to implement this function if an auxiliary power supply is available. The PFET gate is connected to the AuxDrv lead. The PFET drain is connected to the auxiliary power supply, and the PFET source is connected to the load. The polarity of this connection is very important, since the PFET body diode will be connected between the load and the auxiliary supply. If the PFET is connected with its drain to the load and its source to the supply, the body diode will be forward-biased if the auxiliary supply is turned off. This will result in the linear regulator providing current to everything on the auxiliary supply rail.

The AuxDrv lead is internally connected to a $10\text{k}\Omega$ resistor and to a saturating NPN transistor that acts as a switch. If the V_{IN} supply is off, the AuxDrv output will connect the PFET gate to ground through the $10\text{k}\Omega$ resistor, and the PFET will conduct current to the load.

As the V_{IN} supply begins to rise, the AuxDrv lead will also rise until it reaches a typical voltage of about 650mV. The NPN transistor connected to the AuxDrv lead will saturate at this point, and the gate of the PFET will be pulled down to a typical voltage of about 100mV. The PFET will continue to conduct current to the load.

The V_{IN} supply voltage will continue to rise, but the linear regulator output is disabled until V_{IN} reaches a typical threshold of 4.5V. During this time, the load continues to be powered by the auxiliary driver. Once the 4.5V V_{IN} threshold is reached, the saturating NPN connected to the AuxDrv lead turns off. The on-chip $10\text{k}\Omega$ pull-up resistor will pull the PFET gate up to V_{IN} , thus turning the PFET off. The linear regulator turns on at the same time. An

external compensation capacitor is required for the linear regulator to be stable, and this capacitance also serves as a charge reservoir to minimize any “glitching” that might result during the supply changeover. Hysteresis is present in the AuxDrv circuitry, requiring V_{IN} to drop by 100mV (typical) after the linear regulator is providing power to the load before the AuxDrv circuitry can be re-enabled.

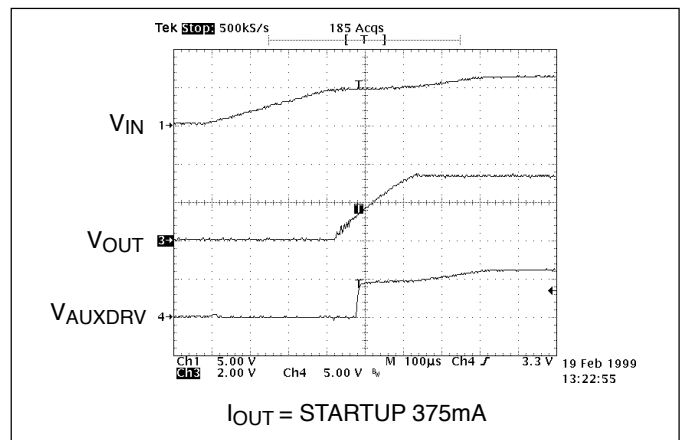


Figure 1. Initial power-up, V_{AUX} not present $R_{OUT} = 8.8\Omega$.

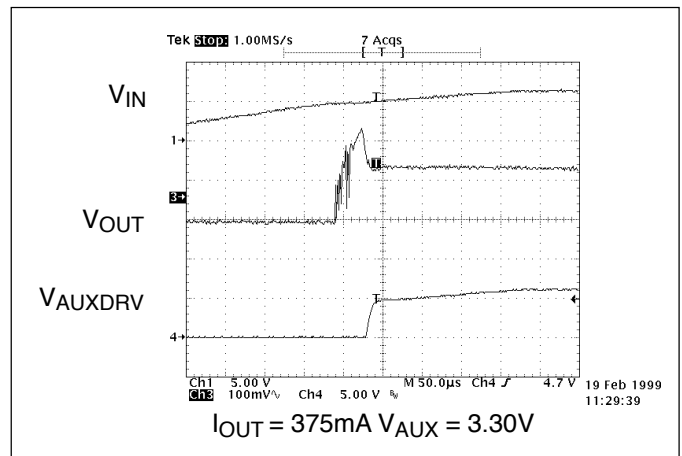


Figure 2a. Power-up, $V_{AUX} = 3.30\text{V}$. Note the “oscillatory performance” as the linear regulator charges the V_{OUT} node. $I_{OUT} \times R_{DS(ON)} \approx 130\text{mV}$

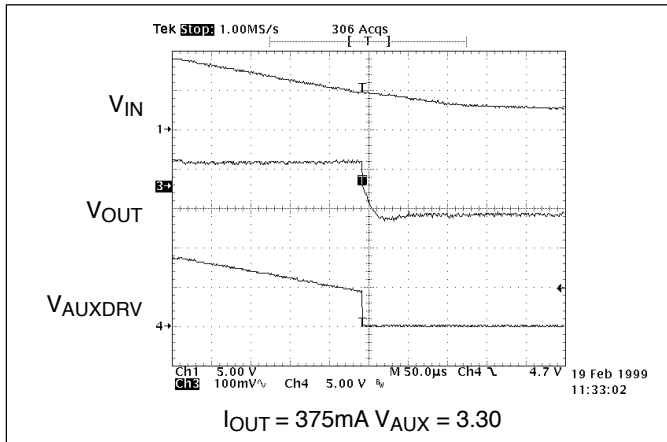


Figure 2b. Power-down, $V_{AUX} = 3.30V$. Again, note $\Delta V = I_{OUT} R_{DS(ON)} \approx 130mV$.

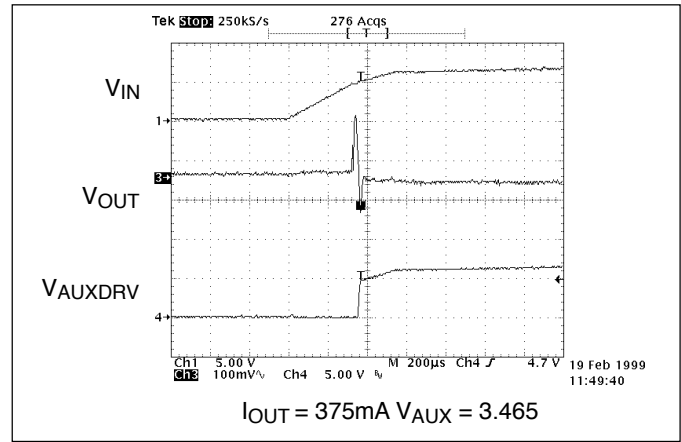


Figure 4a. Power-up, $V_{AUX} = 3.465V$. $I_{OUT} \times R_{DS(ON)}$ is compensated by the higher value of V_{AUX}

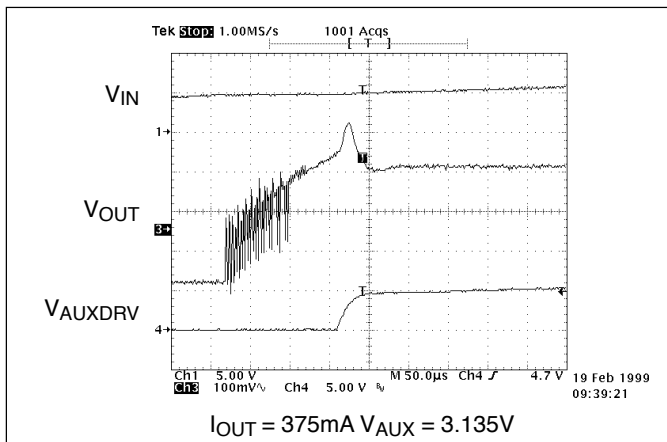


Figure 3a. Power-up, $V_{AUX} = 3.135V$. The "oscillatory performance" mode lasts longer because the difference between V_{AUX} and 3.30 is greater.

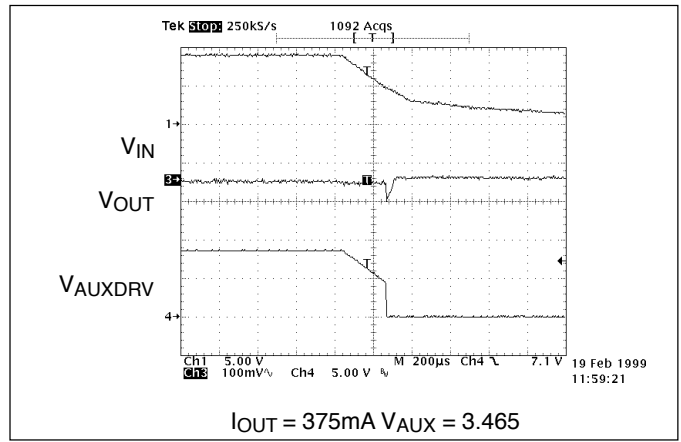


Figure 4b. Power-down, $V_{AUX} = 3.465V$.

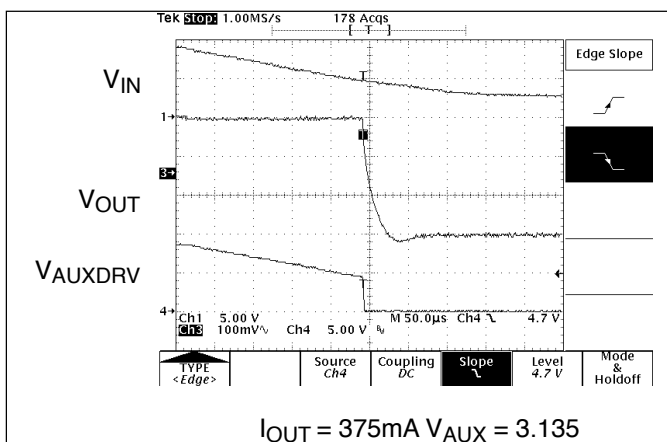


Figure 3b. Power-down, $V_{AUX} = 3.135V$. The difference in voltage is now $I_{OUT} \times R_{DS(ON)}$ plus the difference in supply voltages ($3.30 - V_{AUX}$).

Stability Considerations

The output capacitor helps determine three main characteristics of a linear regulator: startup, transient response and stability.

Startup is affected because the output capacitor must be charged. At initial startup, the V_{IN} supply may not be present, and the capacitor will be charged through the PFET. The PFET will initially provide current to the load through its body diode. The diode will act as a voltage follower until sufficient voltage is present to turn the FET on. Since most commercial power supplies have a fairly low ramp rate, charging through the body diode should effectively limit in-rush current to the capacitor.

During normal operation, transient load current requirements will be satisfied from the charge stored in the output capacitor until either the linear regulator or the auxiliary supply can respond. Larger values of capacitance will improve transient response, but will also cost more. A linear regulator will respond within microseconds, where an external power supply may take milliseconds to react. The output capacitance will provide the difference in current until this occurs. The result will be an instantaneous voltage change at the output. This change is the product of the current change and the capacitor ESR:

$$\Delta V_{OUT} = (\Delta I_{LOAD}) (ESR)$$

This limitation directly affects load regulation. Capacitor ESR must be minimized if output voltage must be maintained within tight tolerances. In such a case, it is often advisable to use a parallel network of different types of capacitors. For example, electrolytic capacitors provide high charge storage capacity in a small size, while tantalum capacitors have low ESR. The parallel combination will result in a high capacity, low ESR network. It is also important to physically locate the capacitance network close to the load, and to connect the network to the load with wide PC board traces to minimize the metal resistance.

The CS5231-3 has been carefully designed to be stable for output capacitances greater than 10 μ F with equivalent series resistance less than 1 Ω . While careful board layout is important, the user should have a stable system if these constraints are met. A graph showing the region of stability for the CS5231-3 is included in the "Typical Performance Characteristics" section of this data sheet.

Input Capacitors and the V_{IN} Thresholds

A capacitor placed on the V_{IN} pin will help to improve transient response. During a load transient, the input capacitor serves as a charge "reservoir", providing the needed extra current until the external power supply can respond. One of the consequences of providing this current is an instantaneous voltage drop at V_{IN} due to capacitor ESR. The magnitude of the voltage change is again the product of the current change and the capacitor ESR.

It is very important to consider the maximum current step that can exist in the system. If the change in current is large enough, it is possible that the instantaneous voltage drop on V_{IN} will exceed the V_{IN} threshold hysteresis, and the IC will enter a mode of operation resembling an oscillation. As the part turns on, the output current I_{OUT} will increase, reaching current limit during initial charging. Increasing I_{OUT} results in a drop at V_{IN} such that the shutdown threshold is reached. The part will turn off, and the load current will decrease. As I_{OUT} decreases, V_{IN} will rise and the part will turn on, starting the cycle all over again. This oscillatory operation is most likely at initial startup when the output capacitance is not charged, and in cases where the ramp-up of the V_{IN} supply is slow. It may also occur during the power transition when the linear regulator turns on and the PFET turns off. A 15 μ s delay exists between turn-on of the regulator and the AUXDRV pin pulling the gate of the PFET high. This delay prevents "chatter" during the power transitions. During this interval, the linear regulator will attempt to regulate the output voltage as 3.3V. If the output voltage is significantly below 3.3V, the IC will go into current limit while trying to raise V_{OUT} . It is a short-lived phenomenon and is mentioned here to alert the user that the condition can exist. It is typically not a problem in applications. Careful choice of the PFET switch with respect to $R_{DS(ON)}$ will minimize the voltage drop which the output must charge through to return to a regulated state. More information is provided in the section on choosing the PFET switch.

If required, using a few capacitors in parallel to increase the bulk charge storage and reduce the ESR should give better performance than using a single input capacitor. Short, straight connections between the power supply and V_{IN} lead along with careful layout of the PC board ground plane will reduce parasitic inductance effects. Wide V_{IN} and V_{OUT} traces will reduce resistive voltage drops.

Choosing the PFET Switch

The choice of the external PFET switch is based on two main considerations. First, the PFET should have a very low turn-on threshold. Choosing a switch transistor with $V_{GS(ON)} \approx 1V$ ensures the PFET will be fully enhanced with only 3.3V of gate drive voltage. Second, the switch transistor should be chosen to have a low $R_{DS(ON)}$ to minimize the voltage drop due to current flow in the switch. The formula for calculating the maximum allowable on-resistance is

$$R_{DS(ON)(MAX)} = \frac{V_{AUX(MIN)} - V_{OUT(MIN)}}{1.5 \times I_{OUT(MAX)}}$$

where $V_{AUX(MIN)}$ is the minimum value of the auxiliary supply voltage, $V_{OUT(MIN)}$ is the minimum allowable output voltage, $I_{OUT(MAX)}$ is the maximum output current and 1.5 is a "fudge factor" to account for increases in $R_{DS(ON)}$ due to temperature.

Output Voltage Sensing

It is not possible to remotely sense the output voltage of the CS5231-3 since the feedback path to the error amplifier is not externally available. It is important to minimize voltage drops due to metal resistance of high current PC board traces. Such voltage drops can occur in both the supply traces and the return traces.

The following board layout practices will help to minimize output voltage errors:

- Always place the linear regulator as close to both load and output capacitors as possible.
- Always use the widest possible traces to connect the linear regulator to the capacitor network and to the load.
- Connect the load to ground through the widest possible traces.
- Connect the IC ground to the load ground trace at the point where it connects to the load.

Current Limit

The CS5231-3 has internal current limit protection. Output current is limited to a typical value of 850mA, even under output short circuit conditions. If the load current drain exceeds the current limit value, the output voltage will be pulled down and will result in an out of regulation condition. The IC does not contain circuitry to report this fault.

Thermal Shutdown

The CS5231-3 has internal temperature monitoring circuitry. The output is disabled if junction temperature of the IC reaches a typical value of 180°C. Thermal hysteresis is typi-

cally 25°C and allows the IC to recover from a thermal fault without the need for an external reset signal. The monitoring circuitry is located near the composite PNP-NPN output transistor, since this transistor is responsible for most of the on-chip power dissipation. The combination of current limit and thermal shutdown will protect the IC from nearly any fault condition.

Reverse Current Protection

During normal system operation, the auxiliary drive circuitry will maintain voltage on the V_{OUT} pin when V_{IN} is absent. IC reliability and system efficiency are improved by limiting the amount of reverse current that flows from V_{OUT} to ground and from V_{OUT} to V_{IN}. Current flows from V_{OUT} to ground through the feedback resistor divider that sets up the output voltage. This resistor can range in value from 6kΩ to about 10kΩ, and roughly 500μA will flow in the typical case. Current flow from V_{OUT} to V_{IN} will be limited to leakage current after the IC shuts down. On-chip RC time constants are such that the output transistor should be turned off well before V_{IN} drops below the V_{OUT} voltage.

Calculating Power Dissipation and Heatsink Requirements

Most linear regulators operate under conditions that result in high on-chip power dissipation. This results in high junction temperatures. Since the IC has a thermal shutdown feature, ensuring the regulator will operate correctly under normal conditions is an important design consideration. Some heatsinking will usually be required.

Thermal characteristics of an IC depend on four parameters: ambient temperature (T_A in °C), power dissipation (P_D in watts), thermal resistance from the die to the ambient air (θ_{JA} in °C per watt) and junction temperature (T_J in °C). The maximum junction temperature is calculated from the formula below:

$$T_{J(\text{MAX})} = T_{A(\text{MAX})} + (\theta_{JA}) (P_{D(\text{MAX})})$$

Maximum ambient temperature and power dissipation are determined by the design, while θ_{JA} is dependent on the package manufacturer. The maximum junction temperature for operation of the CS5231-3 within specification is 150°C. The maximum power dissipation of a linear regulator is given as

$$P_{D(\text{MAX})} = (V_{\text{in}(\text{MAX})} - V_{\text{OUT}(\text{MIN})}) (I_{\text{LOAD}(\text{MAX})}) + (V_{\text{IN}(\text{MAX})}) (I_{\text{Gnd}(\text{MAX})})$$

where I_{Gnd(MAX)} is the IC bias current.

It is possible to change the effective value of θ_{JA} by adding a heatsink to the design. A heatsink serves in some manner to raise the effective area of the package, thus improving the flow of heat from the package into the surrounding air. Each material in the path of heat flow has its own characteristic thermal resistance, all measured in °C per watt. The thermal resistances are summed to determine the total thermal resistance between the die junction and air. There are three components of interest: junction-to-case thermal resistance (θ_{JC}), case-to-heatsink thermal resistance (θ_{CS})

and heatsink-to-air thermal resistance (θ_{SA}). The resulting equation for junction-to-air thermal resistance is

$$\theta_{JA} = \theta_{JC} + \theta_{CS} + \theta_{SA}$$

The value of θ_{JC} for the CS5231-3 is provided in the Packaging Information section of this data sheet. θ_{CS} can be considered zero, since heat is conducted out of the package by the IC leads and the tab of the D²PAK package, and since the IC leads and tab are soldered directly to the PC board.

Modification of θ_{SA} is the primary means of thermal management. For surface mount components, this means modifying the amount of trace metal that connects to the IC.

The thermal capacity of PC board traces is dependent on how much copper area is used, whether or not the IC is in direct contact with the metal, whether or not the metal surface is coated with some type of sealant, and whether or not there is airflow across the PC board. The chart provided below shows heatsinking capability of a square, single sided copper PC board trace. The area is given in square millimeters. It is assumed there is no airflow across the PC board.

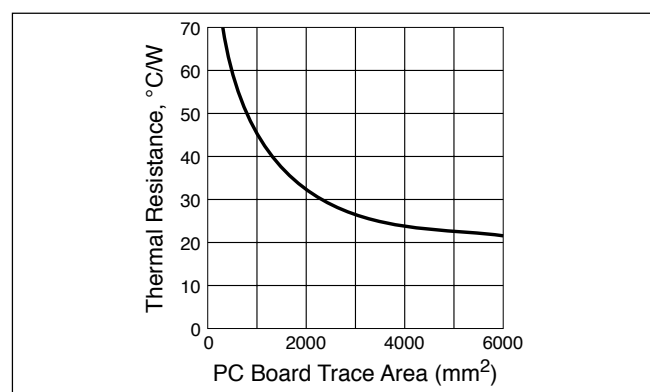


Figure 5: Thermal Resistance Capability of Copper PC Board Metal Traces

Typical D²PAK PC Board Heatsink Design

A typical design of the PC board surface area needed for the D²PAK package is shown below. Calculations were made assuming V_{IN(MAX)} = 5.25V, V_{OUT(MIN)} = 3.266V, I_{OUT(MAX)} = 500mA, I_{Gnd(MAX)} = 5mA and T_A = 70°C.

$$P_D = (5.25V - 3.266V) (0.5A) + (5.25V) (0.005A) = 1018\text{mW}$$

Maximum temperature rise $\Delta T = T_{J(\text{MAX})} - T_A = 150^\circ\text{C} - 70^\circ\text{C} = 80^\circ\text{C}$.

$$\theta_{JA} (\text{worst case}) = \Delta T / P_D = 80^\circ\text{C} / 1.018\text{W} = 78.56^\circ\text{C/W}$$

First, we determine the need for heatsinking. If we assume the maximum θ_{JA} = 50°C/W for the D²PAK, the maximum temperature rise is found to be

$$\Delta T = (P_D) (\theta_{JA}) = (1.018\text{W}) (50^\circ\text{C/W}) = 50.9^\circ\text{C}$$

This is less than the maximum specified operating junction temperature of 125°C, and no heatsinking is required. Since the D²PAK has a large tab, mounting this part to the

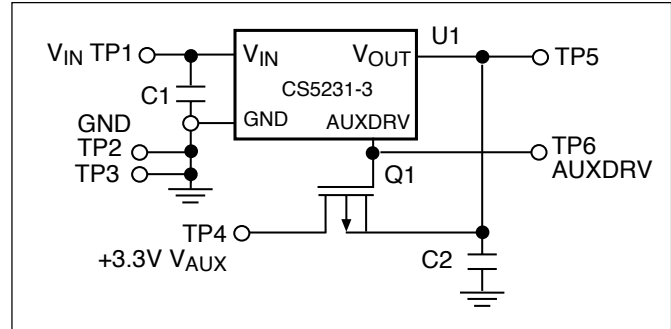
PC board by soldering both tab and leads will provide superior performance with no PC board area penalty.

Description

The CS5231-3 application circuit has been implemented as shown in the following pages. The schematic, bill of materials and printed circuit board artwork can be used to build the circuit. The design is very simple and consists of two capacitors, a p-channel FET and the CS5231-3. Five turret pins are provided for connection of supplies, meters, oscilloscope probes and loads. The CS5231-3 power supply management solution is implemented in an area less than 1.5 square inches. Due to the simplicity of the design, output current must be derated if the CS5231-3 is operated at V_{IN} voltages greater than 7V. Figure 15 provides the derating curve on a maximum power dissipation if heatsink is added. Operating at higher power dissipation without heatsink may result in a thermal shutdown condition.

The V_{OUT} Connection

The V_{OUT} connection is tied to the V_{OUT} lead of the CS5231-3 and the PFET source. This point provides a convenient point at which some type of lead may be applied.



Application Circuit Schematic

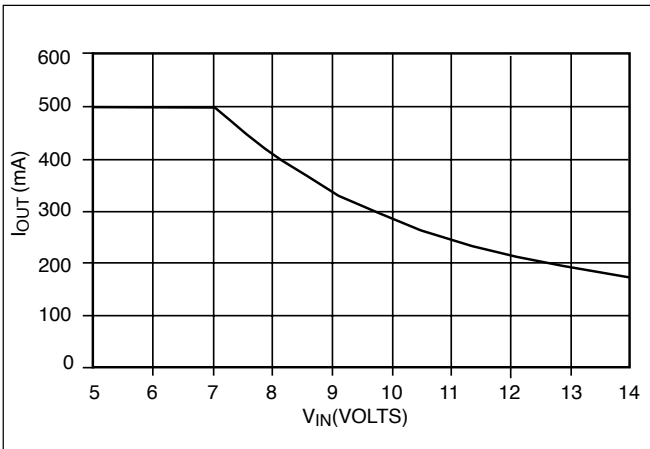


Figure 6: Demo Board Output Current Derating vs V_{IN}

The V_{IN} Connection

The V_{IN} connection is denoted as such on the PC board. The maximum input voltage to the IC is 14V before damage to the IC is possible. However, the specification range for the IC is $4.75V < V_{IN} < 6V$.

The Gnd Connection

The Gnd connection ties the IC power return to two turret pins. The extra turret pin provides for connection of multiple instrument grounds to the demonstration board.

The AuxDrv Connection

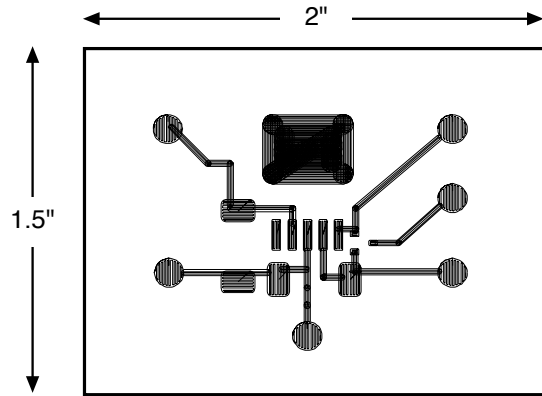
The AuxDrv lead of the CS5231-3 is connected to the gate of the external PFET. This connection is also brought to a turret pin to allow easy connection of an oscilloscope probe for viewing the AuxDrv waveforms.

The V_{AUX} Connection

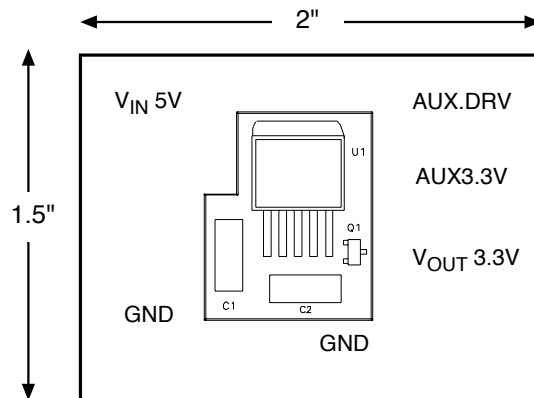
The V_{AUX} turret pin provides a connection point between an external 3.3V supply and the PFET drain.

PC Board Layout Artwork

The PC board is a single layer copper design. The layout artwork is reproduced at actual size below.



Top Copper Layer



Top Silk Screen Layer

Test Descriptions

The startup and supply transition waveforms shown in figures 1 through 4b were obtained using the application circuit board with a resistive load of 8.8Ω. This provides a DC load of 375mA when the regulated output voltage is 3.3V. A standard 2A bench supply was used to provide power to the application circuit. The transient response waveforms shown in the Typical Performance Characteristics section were obtained by switching a 6.3Ω resistor across the output.

Temperature Performance

The graph below shows thermal performance for the CS5231-3 across the normal operating output current range.

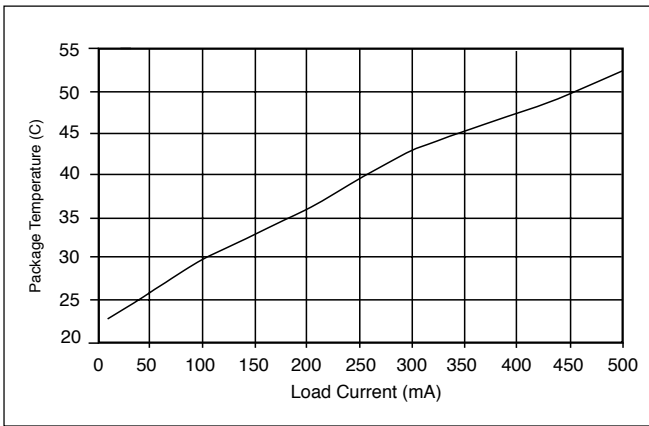


Figure 7: Package Temperature vs Load Current ($V_{IN} = 5V, T_A = 23\text{ C}^\circ$)

PFET $R_{DS(ON)}$ Performance

The graph provided below show typical $R_{DS(ON)}$ performance for the PFET. The data is provided as V_{DS} vs I_{OUT} for different values of V_{AUX} .

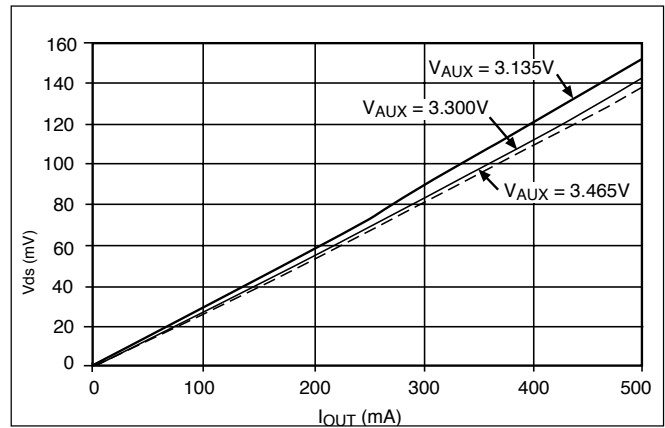


Figure 8: PFET V_{ds} vs I_{OUT}

Application Circuit Bill of Materials

| Refdes | Description | Part Number | Manufacturer | Contact Information |
|--------|---------------------------------|--------------|----------------------|--------------------------------------|
| C1, C2 | 33μF, 16V tantalum capacitors | TAJ336K016 | AVX Corp | www.avxcorp.com 1-843-448-9411 |
| Q1 | p-channel FET transistor | MGSF1P02ELT1 | Motorola | www.mot-sps.com |
| U1 | Linear regulator with auxiliary | CS5231-3DPS | Cherry Semiconductor | www.cherry-sem.com 1-800-272-3601 |
| T1-T6 | Turret pins | 40F6023 | Newark Electronics | www.newark.com 1-800-463-9275 |

Package Specification

CS5231-3

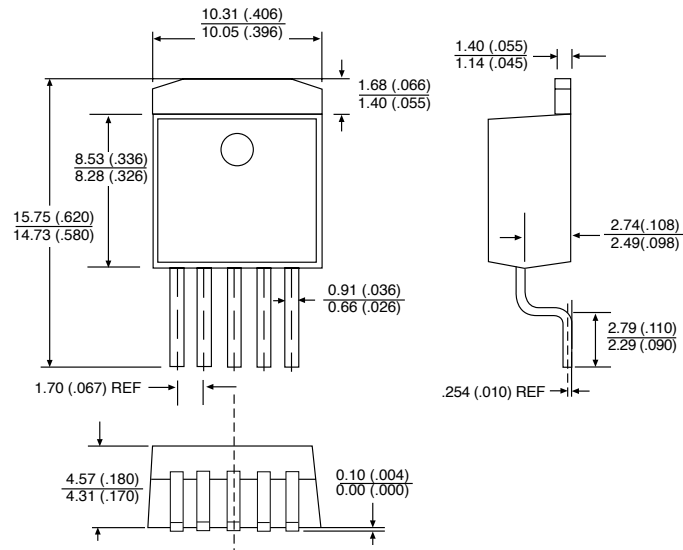
PACKAGE DIMENSIONS IN mm (INCHES)

PACKAGE THERMAL DATA

| Thermal Data | | 5Lead D ² PAK | |
|------------------|-----|-----------------------------|------|
| R _{θJC} | typ | 2.5 | °C/W |
| R _{θJA} | typ | 10-50* | °C/W |

*Depending on thermal properties of substrate. R_{θJA} = R_{θJC} + R_{θCA}

5 Lead D²PAK (DP)



Ordering Information

| Part Number | Description |
|---------------|---|
| CS5231-3GDP5 | 5 Lead D ² PAK |
| CS5231-3GDPR5 | 5 Lead D ² PAK (tape & reel) |

Cherry Semiconductor Corporation reserves the right to make changes to the specifications without notice. Please contact Cherry Semiconductor Corporation for the latest available information.