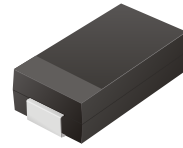


# CFPA10MM

**Reverse Voltage: 2000 Volts**  
**Forward Current: 1.0 Amp**

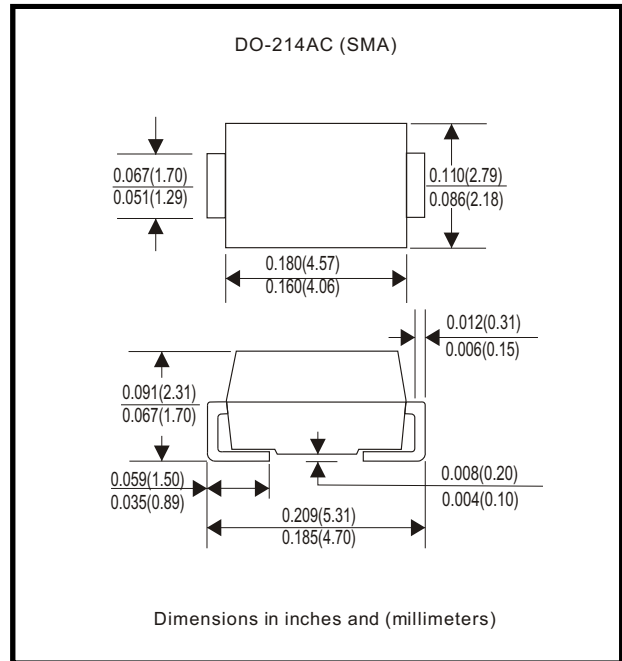


## Features

- Glass passivated cavity-free junction
- Ideal for surface mount automotive application
- Plastic package has Underwriters Lab. flammability classification 94V-0
- Built-in strain relief
- High temperature soldering guaranteed: 350 degree C/10sec, at terminals
- For use in high frequency rectifier circuits

## Mechanical data

Case: JEDEC DO-214AC molded plastic  
 Terminals: solderable per MIL-STD-750, method 2026  
 Polarity: Color band denotes cathode end  
 Weight: 0.064 gram



## Maximum Ratings and Electrical Characteristics

Parameter	Symbol	CFPA10MM	Unit
Max. Repetitive Peak Reverse Voltage	V <sub>RRM</sub>	2000	V
Max. DC Blocking Voltage	V <sub>DC</sub>	2000	V
Max. RMS Voltage	V <sub>RMS</sub>	1400	V
Peak Surge Forward Current 8.3ms single half sine-wave Sine-wave superimposed on Rate load (JEDEC)	I <sub>FSM</sub>	20	A
Max. Average Forward Current	I <sub>o</sub>	1.0	A
Max. Instantaneous Forward Current at 1.0 A	V <sub>F</sub>	1.8	V
Reverse Recovery Time	T <sub>rr</sub>	500	nS
Max. DC Reverse Current at rated DC Blocking Voltage Ta=25°C Ta=125°C	I <sub>R</sub>	5 50	uA
Max. Thermal Resistance (Note 1)	R <sub>θJA</sub>	65	°C/W
Operating Junction temperature	T <sub>j</sub>	-55 to +175	°C
Storage Temperature	T <sub>STG</sub>	-55 to +175	°C

Note 1: Thermal resistance from junction to ambient at 0.375 (9.5 mm) lead lengths, P.C. B. Mounted.

## RATING AND CHARACTERISTIC CURVES (CFPA10MM)

Fig. 1 - Reverse Characteristics

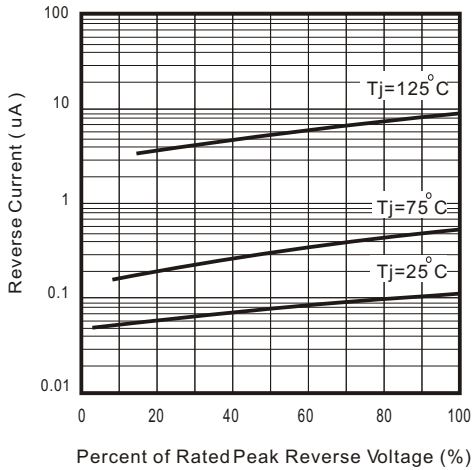


Fig.2 - Forward Characteristics

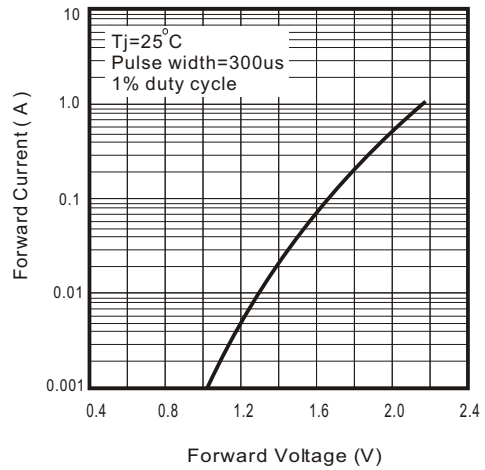


Fig. 3 - Junction Capacitance

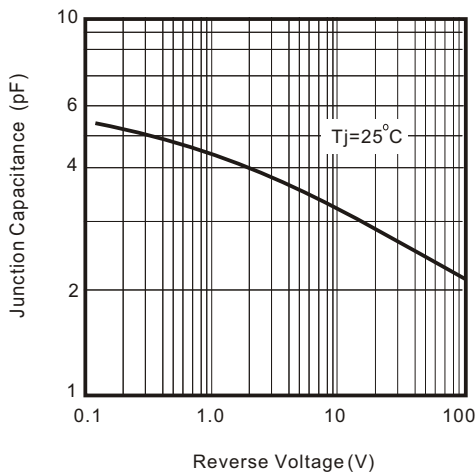


Fig. 4 - Non Repetitive Forward Surge Current

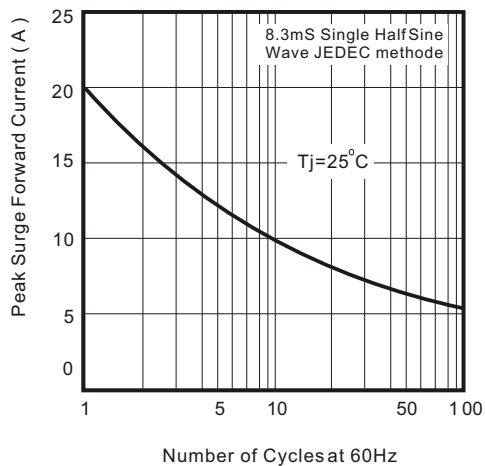
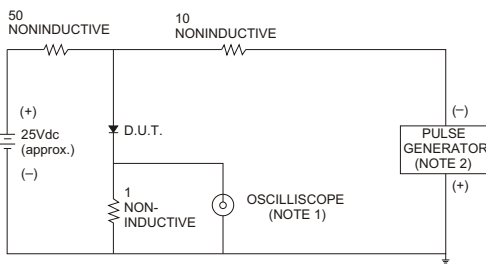


Fig. 5 - Test Circuit Diagram and Reverse Recovery Time Characteristics



NOTES: 1. Rise Time= 7ns max., Input Impedance= 1 megohm.22pF.  
2. Rise Time= 10ns max., Source Impedance= 50 ohms.

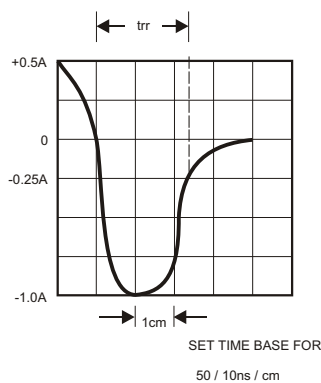


Fig. 6 - Current Derating Curve

