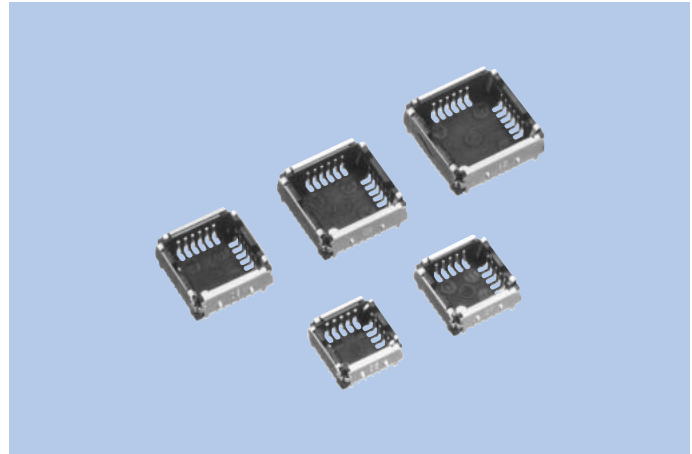


# Camera Module Connectors CAM-F9\* Series, CAM-H28

## FEATURES

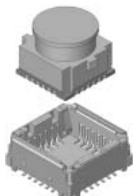

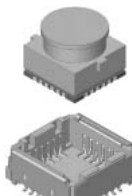
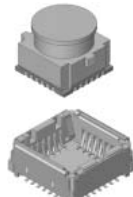

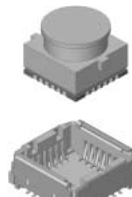
1. This is a camera module connector used for cell phones, PDA, back monitors for cars, toy cameras, security cameras, etc.
2. Space-saving and low-height design adopting connectors that minimize increase in size.
3. Ability to meet a variety of requests such as those concerning the type of contact points, variations in locking mechanisms, etc.
4. A key preventing incorrect insertion helps avoid any damage due to incorrect insertion.



## CAM-F9\* Series, CAM-H28 LIST

MODEL	Supporting module size				
	M06 6×6 20pin	M07 7×7 20pin	M08 8×8 24pin	M09 9×9 24pin	M10 10×10 24pin
CAM-F91	R41-8562A	R41-8560A	R41-8559A	R41-8558A	R41-8557A
CAM-F92	R41-8568A	R41-8566A	R41-8565A	R41-8564A	R41-8563A
CAM-F93	R41-8548A	R41-8547A	R41-8546A	R41-8545A	R41-8544A
CAM-F94	R41-8589A	R41-8588A	R41-8587A	R41-8586A	R41-8585A
CAM-F95	R41-8596A	R41-8595A	R41-8594A	R41-8593A	R41-8592A
CAM-H28	R41-9142A	R41-9143A	R41-9144A	R41-9145A	R41-9146A

## FEATURES

CAM-F91	CAM-F92	CAM-F93
<p>Side contact PWB lock</p>  <p>This product locks with module circuit board.</p>	<p>Side contact Module lock</p>  <p>This product locks with module holder.</p>	<p>Side contact Without lock</p>  <p>Without lock</p>
CAM-F94	CAM-F95	CAM-H28
<p>Bottom contact PWB lock</p>  <p>This product locks with module circuit board.</p>	<p>Bottom contact Module lock</p>  <p>This product locks with module holder.</p>	<p>Bottom contact Without lock</p>  <p>Without lock</p>

## SPECIFICATIONS

### ELECTRICAL CHARACTERISTICS

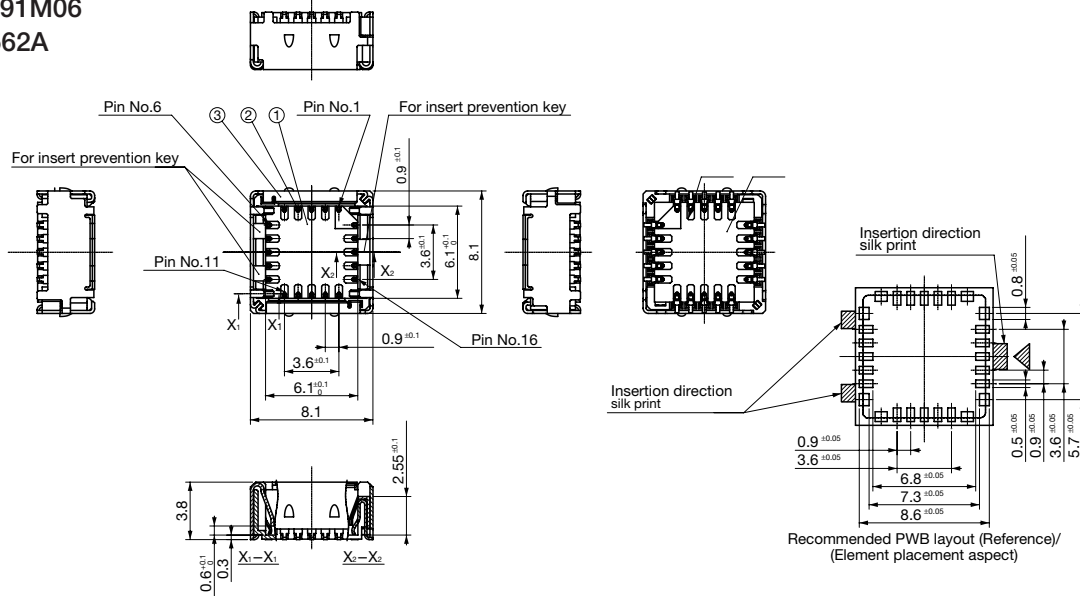
Rated Voltage	50V AC (rms)
Rated Current	0.5A
Withstanding Voltage	AC 200V
Insulation Resistance	50MΩ min.
Contact Resistance	40mΩ max.

## MATERIAL & FINISH

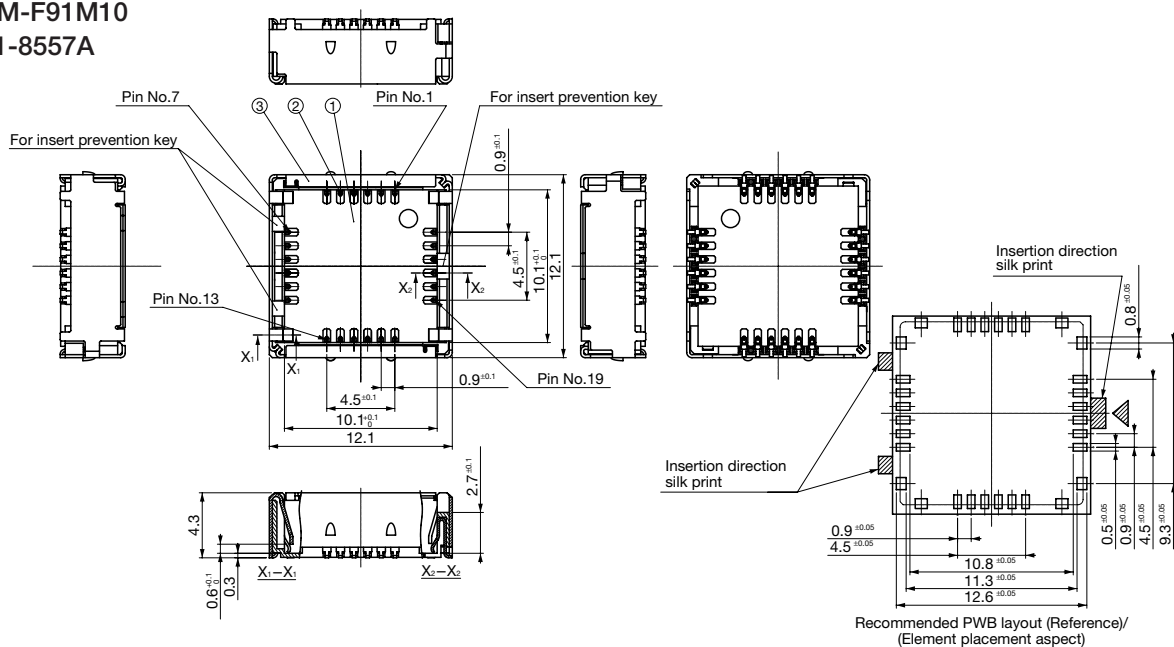
Component Parts	Material	Finish
Housing	9T Nylon	(Black)
Contact	Copper Alloy	Gold flash plating
Shell	Copper Alloy	Tin reflow plating

## DIMENSIONS

CAM-F91M06  
R41-8562A



CAM-F91M10  
R41-8557A



Unit : mm