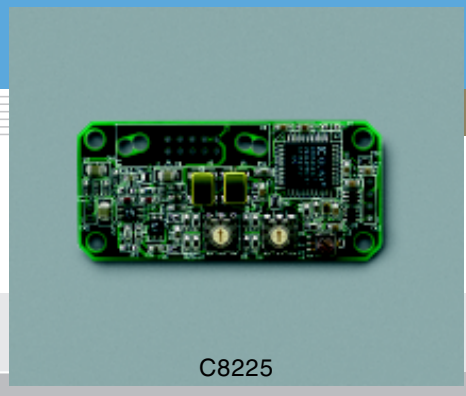


Pulse generator for NMOS linear image sensor driver circuit C8225 series



C8225

Pulse generator for NMOS linear image sensor

C8225 series is a pulse generator specifically designed for NMOS linear image sensor driver circuits. C8225 series provides the driver circuits with a master start pulse and master clock pulse which can be preset by rotary switches.

C8225 series uses a quartz oscillator as the reference clock that delivers high-precision master start and clock pulses. When a separate pin connector and socket are installed on the circuit board, C8225 series can be mounted directly on C7883/C7884/C7885 series image sensor driver circuit board.

Features

- Directly mountable on C7883/C7884/C7885 series
- Compact (compared to conventional type C4091)
- Single power supply (+5 V) operation

Selection guide

Type No.	Description	Feature
C8225-01	For C7883/C7884 series	Master start interval: 1 μ s to 50 s (1-2-5 sequence) Master clock frequency: 62.5 kHz to 32 MHz Has no input/output connector.
C8225-02	For C7885 series	Master start interval: 1 μ s to 50 s (1-2-5 sequence) Master clock frequency: 46.875 kHz to 24 MHz Has no input/output connector.

Note)

- 1: Standard input/output connector is FAP-16-07#2 (made by Yamaichi, sold separately). Equivalent connectors are available from other manufacturers.
- 2: When mounting C8225 series on a driver circuit, use a 6-pin socket (PM-1 made by MAC8) on the driver circuit and a 6-pin plug (OY-003 made by MAC8) on C8225 series.
- 3: Custom products with an input/output connector pre-mounted are available on request. Please consult our sales office.
- 4: We welcome custom requests. Feel free to contact our sales office.

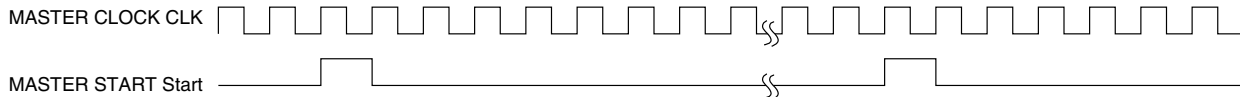
Specifications (Ta=25 °C)

Parameter	Symbol	Condition	Min.	Typ.	Max.	Unit
Supply voltage	+Vs		+4.5	+5.0	+5.5	V
Current consumption *1	+Is	+5 V	-	-	50	mA
Operating temperature	Topr		0 to +50 *2			°C
Storage temperature	Tstg		-10 to +60 *2			°C

*1: Current consumption depends on the clock frequency.

*2: No condensation

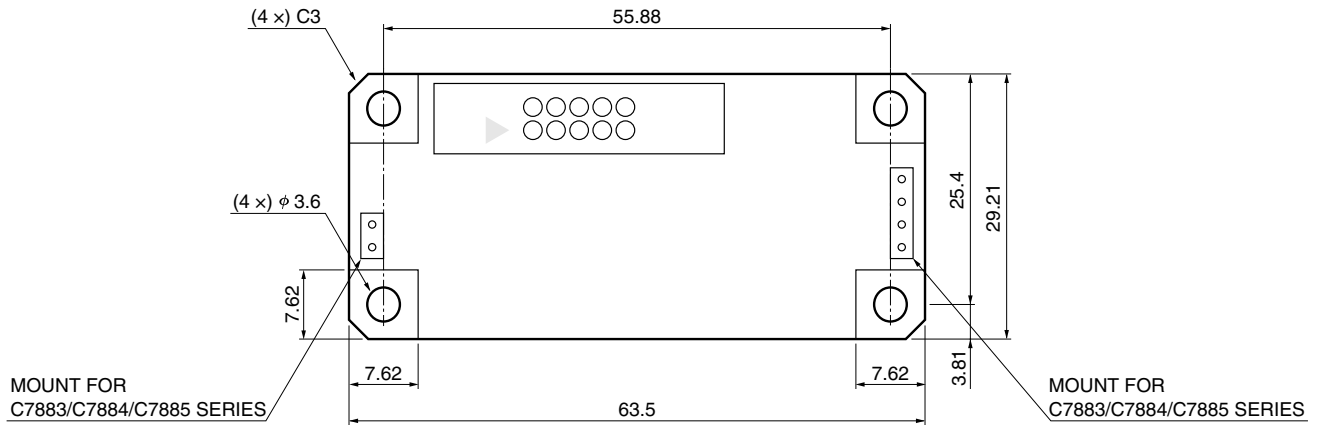
Timing chart



KACCC0126EA

Pulse generator for NMOS linear image sensor driver circuit **C8225 series**

■ Dimensional outline (unit: mm)



KACCA0087EA

HAMAMATSU

Information furnished by HAMAMATSU is believed to be reliable. However, no responsibility is assumed for possible inaccuracies or omissions. Specifications are subject to change without notice. No patent rights are granted to any of the circuits described herein. ©2002 Hamamatsu Photonics K.K.

HAMAMATSU PHOTONICS K.K., Solid State Division

1126-1 Ichino-cho, Hamamatsu City, 435-8558 Japan, Telephone: (81) 053-434-3311, Fax: (81) 053-434-5184, <http://www.hamamatsu.com>

U.S.A.: Hamamatsu Corporation: 360 Foothill Road, P.O.Box 6910, Bridgewater, N.J. 08807-0910, U.S.A., Telephone: (1) 908-231-0960, Fax: (1) 908-231-1218

Germany: Hamamatsu Photonics Deutschland GmbH: Arzbergerstr. 10, D-82211 Herrsching am Ammersee, Germany, Telephone: (49) 08152-3750, Fax: (49) 08152-2658

France: Hamamatsu Photonics France S.A.R.L.: 8, Rue du Saule Trapu, Parc du Moulin de Massy, 91882 Massy Cedex, France, Telephone: 33-(1) 69 53 71 00, Fax: 33-(1) 69 53 71 10

United Kingdom: Hamamatsu Photonics UK Limited: 2 Howard Court, 10 Tewin Road, Welwyn Garden City, Hertfordshire AL7 1BW, United Kingdom, Telephone: (44) 1707-294888, Fax: (44) 1707-325777

North Europe: Hamamatsu Photonics Norden AB: Smidesvägen 12, SE-171 41 Solna, Sweden, Telephone: (46) 8-509-031-00, Fax: (46) 8-509-031-01

Italy: Hamamatsu Photonics Italia S.R.L.: Strada della Moia, 1/E, 20020 Arese, (Milano), Italy, Telephone: (39) 02-935-81-733, Fax: (39) 02-935-81-741

Cat. No. KACC1077E01
Apr. 2002 DN