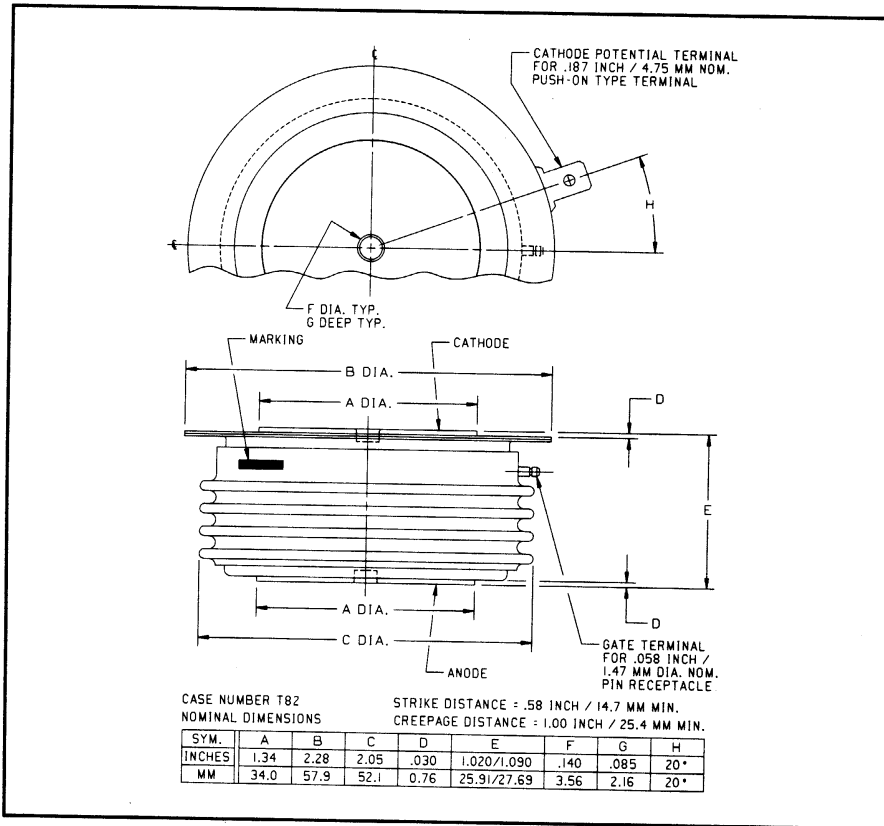
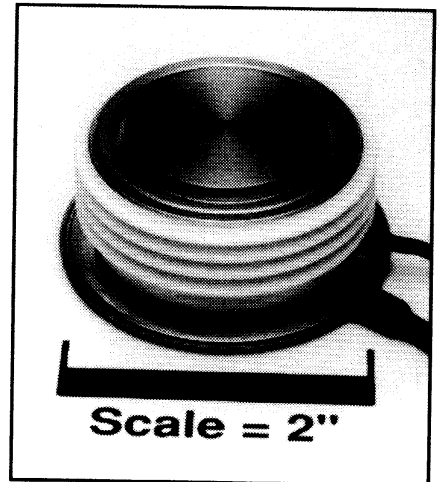


Powerex, Inc., 200 Hillis Street, Youngwood, Pennsylvania 15697-1800 (412) 925-7272
 Powerex, Europe, S.A. 428 Avenue G. Durand, BP107, 72003 Le Mans, France (43) 41.14.14

Phase Control SCR
900 Amperes Average
1600 Volts



C440 (Outline Drawing)



C440 Phase Control SCR
 900 Amperes Average, 1600 Volts

Ordering Information:

Select the complete five or six digit part number you desire from the table, i.e. C440PM is a 1600 Volt, 900 Ampere Phase Control SCR.

| Type | Voltage | | Current |
|------|--------------------------------------|------|--------------------|
| | V _{DRM} V _{RRM} | Code | I _{T(av)} |
| C440 | 600 | M | 900 |
| | 800 | N | |
| | 1000 | P | |
| | 1200 | PB | |
| | 1400 | PD | |
| | 1600 | PM | |

Description:

Powerex Silicon Controlled Rectifiers (SCR) are designed for phase control applications. These are all-diffused, Press-Pak, hermetic Pow-R-Disc devices employing the field proven amplifying gate.

Features:

- Low On-State Voltage
- High di/dt Capability
- High dv/dt Capability
- Hermetic Packaging
- Excellent Surge and I²t Ratings

Applications:

- Power Supplies
- Motor Control



Powerex, Inc., 200 Hillis Street, Youngwood, Pennsylvania 15697-1800 (412) 925-7272
Powerex, Europe, S.A. 428 Avenue G. Durand, BP107, 72003 Le Mans, France (43) 41.14.14

C440
Phase Control SCR
900 Amperes Average, 1600 Volts

Absolute Maximum Ratings

| Characteristics | Symbol | C440 | Units |
|---|--------------|------------------|--------------------|
| Non-repetitive Transient Peak Reverse Voltage | V_{RSM} | $V_{RRM} + 100V$ | Volts |
| RMS On-state Current, $T_C = 67^\circ C$ | $I_{T(rms)}$ | 1400 | Amperes |
| Average Current 180° Sine Wave, $T_C = 67^\circ C$ | $I_{T(av)}$ | 900 | Amperes |
| RMS On-state Current, $T_C = 55^\circ C$ | $I_{T(rms)}$ | 1600 | Amperes |
| Average Current 180° Sine Wave, $T_C = 55^\circ C$ | $I_{T(av)}$ | 1020 | Amperes |
| Peak One Cycle Surge On-state Current (Non-repetitive) 60Hz | I_{tsm} | 13000 | Amperes |
| Peak One Cycle Surge On-state Current (Non-repetitive) 50Hz | I_{tsm} | 12000 | Amperes |
| Critical Rate-of-rise of On-state Current (Non-repetitive) | di/dt | 400 | A/ μ sec |
| Critical Rate-of-rise of On-state Current (Repetitive) | di/dt | 150 | A/ μ sec |
| I^2t (for Fusing) for One Cycle, 60Hz | I^2t | 700,000 | A ² sec |
| Peak Gate Power Dissipation | P_{GM} | 200 | Watts |
| Average Gate Power Dissipation | $P_{G(av)}$ | 5 | Watts |
| Operating Temperature | T_j | -40 to +125°C | °C |
| Storage Temperature | T_{stg} | -40 to +150°C | °C |
| Approximate Weight | | 8 | oz. |
| | | 227 | g |
| Mounting Force | | 3000 to 3500 | lb. |
| | | 1330 to 1550 | kg. |



Powerex, Inc., 200 Hillis Street, Youngwood, Pennsylvania 15697-1800 (412) 925-7272
 Powerex, Europe, S.A. 428 Avenue G. Durand, BP107, 72003 Le Mans, France (43) 41.14.14

C440
 Phase Control SCR
 900 Amperes Average, 1600 Volts

Electrical Characteristics, $T_j = 25^\circ\text{C}$ Unless Otherwise Specified

| Characteristics | Symbol | Test Conditions | Min. | Typ. | Max. | Units |
|---|-------------|--|------|------|---------------------------|--------------------|
| Repetitive Peak Reverse Leakage Current | I_{RRM} | $T_j = 125^\circ\text{C}$, $V_R = V_{RRM}$ | | | 35 | mA |
| Repetitive Peak Forward Leakage Current | I_{DRM} | $T_j = 125^\circ\text{C}$, $V_D = V_{DRM}$ | | | 35 | mA |
| Peak On-state Voltage | V_{TM} | $I_{TM} = 3000\text{A Peak}$ Duty Cycle < 0.1% | | | 1.65 | Volts |
| Threshold Voltage, Low-level | $V_{(TO)1}$ | $T_j = 125^\circ\text{C}$, $I = 15\%$, $I_{T(av)}$ to $\pi I_{T(av)}$ | | | 0.72273 | Volts |
| Slope Resistance, Low-level | r_{T1} | | | | 0.3798 | m Ω |
| Threshold Voltage, High-level | $V_{(TO)2}$ | $T_j = 125^\circ\text{C}$, $I = \pi I_{T(av)}$ to I_{TSM} | | | 0.89585 | Volts |
| Slope Resistance, High-level | r_{T2} | | | | 0.2776 | m Ω |
| V_{TM} Coefficients, Low-level | | $T_j = 125^\circ\text{C}$, $I = 15\%$ $I_{T(av)}$ to $\pi I_{T(av)}$ | | | | |
| | | | | | $A_1 = 0.78305$ | |
| | | | | | $B_1 = -0.093783$ | |
| | | | | | $C_1 = -9.599\text{E-}05$ | |
| | | | | | $D_1 = 0.035453$ | |
| V_{TM} Coefficients, High-level | | $T_j = 125^\circ\text{C}$, $I = \pi I_{T(av)}$ to I_{TSM} | | | | |
| | | | | | $A_2 = 15.757$ | |
| | | | | | $B_2 = -2.6710$ | |
| | | | | | $C_2 = -1.727\text{E-}04$ | |
| | | | | | $D_2 = 0.14317$ | |
| Typical Delay Time | t_d | $I_T = 50\text{A}$, Gate = 20V, 20 Ω , 0.1 $\mu\text{sec Rise}$ | | 0.7 | | μsec |
| Typical Turn-off Time | t_q | $T_j = 125^\circ\text{C}$, $I_{TM} = 500\text{A}$, $di_R/dt = 25\text{A}/\mu\text{sec}$ Reapplied $dv/dt = 20\text{V}/\mu\text{sec}$ Linear to 80% V_{DRM} , $V_R \geq 50\text{V}$, Gate = 0V, $R_{GK} = 100\Omega$ | | 125 | | μsec |
| Minimum Critical dv/dt - Exponential to V_{DRM} | dv/dt | $T_j = 125^\circ\text{C}$ | 200 | | | V/ μsec |
| Gate Trigger Current | I_{GT} | $T_j = 25^\circ\text{C}$, $V_D = 6V_{DC}$, $R_L = 3\Omega$ | | | 150 | mA |
| Gate Trigger Voltage | V_{GT} | $T_j = -40^\circ\text{C}$ to $+125^\circ\text{C}$, $V_D = 6V_{DC}$, $R_L = 3\Omega$ | | | 5.0 | Volts |
| Non-Trigging Gate Voltage | V_{GDM} | $T_j = 125^\circ\text{C}$, $V_D = V_{DRM}$, $R_L = 1000\Omega$ | | | 0.15 | Volts |
| Peak Forward Gate Current | I_{GTM} | | | | 10 | A |
| Peak Reverse Gate Voltage | V_{GRM} | | | | 5 | Volts |

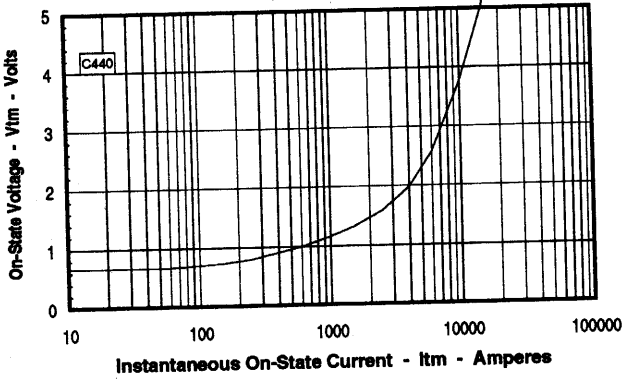
Thermal Characteristics

Maximum Thermal Resistance, Double Sided Cooling

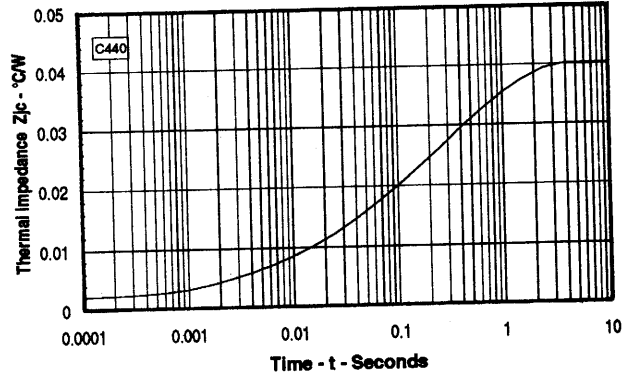
| | | | |
|------------------|-------------------|-------|---------------------------|
| Junction-to-Case | $R_{\theta(j-c)}$ | 0.040 | $^\circ\text{C}/\text{W}$ |
| Case-to-Sink | $R_{\theta(c-s)}$ | 0.020 | $^\circ\text{C}/\text{W}$ |

C440
Phase Control SCR
 900 Amperes Average, 1600 Volts

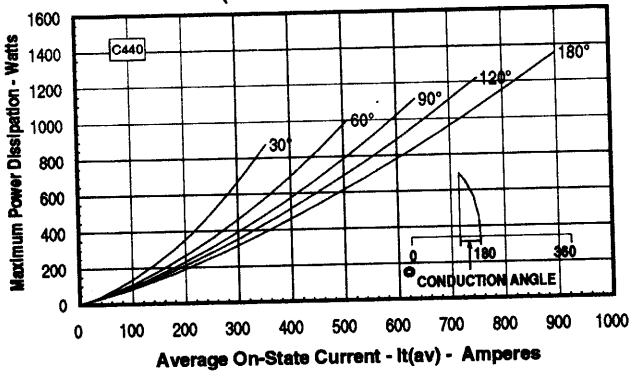
Maximum On-State Forward Voltage Drop
 (T_J = 125 °C)



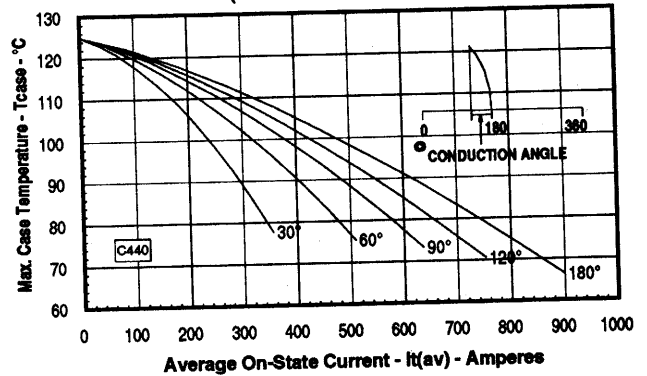
Maximum Transient Thermal Impedance
 (Junction to Case)



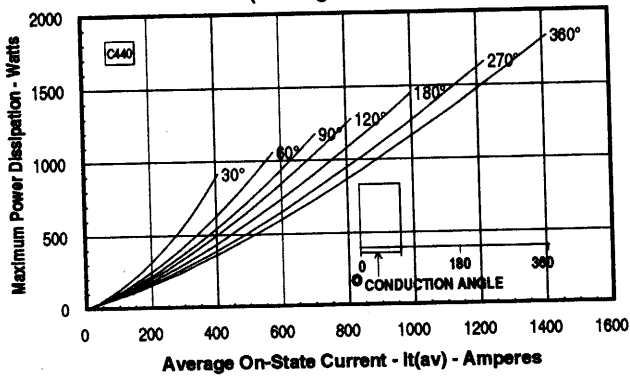
Maximum On-State Power Dissipation
 (Sinusoidal Waveform)



Maximum Allowable Case Temperature
 (Sinusoidal Waveform)



Maximum On-State Power Dissipation
 (Rectangular Waveform)



Maximum Allowable Case Temperature
 (Rectangular Waveform)

