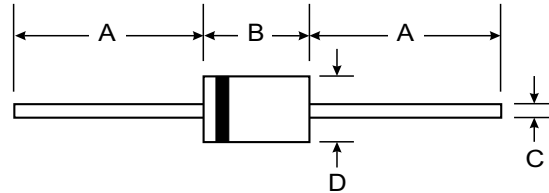


### Features

- Low cost
- Diffused junction
- Low leakage
- Low forward voltage drop
- High current capability
- Easily cleaned with alcohol, Isopropanol and similar solvents



### Mechanical Data

- Case: JEDEC DO-41, molded plastic
- Terminals: Axial lead, solderable per MIL-STD-202, Method 208
- Polarity: Color band denotes cathode
- Weight: 0.012 ounces, 0.34 grams
- Mounting position: Any

DO-41		
Dim	Min	Max
A	25.40	—
B	4.06	5.21
C	0.71	0.864
D	2.00	2.72
All Dimensions in mm		

### Maximum Ratings and Electrical Characteristics @ T<sub>A</sub> = 25°C unless otherwise specified

Single phase, half wave, 60Hz, resistive or inductive load.  
For capacitive load, derate current by 20%.

		BYV26A	BYV26B	BYV26C	BYV26D	BYV26E	UNITS
Maximum recurrent peak reverse voltage	V <sub>RRM</sub>	200	400	600	800	1000	V
Maximum RMS voltage	V <sub>RMS</sub>	140	280	420	560	700	V
Maximum DC blocking voltage	V <sub>DC</sub>	200	400	600	800	1000	V
Maximum average forward rectified current 9.5 mm lead length, @T <sub>A</sub> =75°C	I <sub>F(AV)</sub>	1.0					A
Peak forward surge current 10ms single half-sine-wave superimposed on rated load @T <sub>J</sub> =125°C	I <sub>FSM</sub>	30.0					A
Maximum instantaneous forward voltage @ 1.0A	V <sub>F</sub>	2.5					V
Maximum reverse current @T <sub>A</sub> =25°C at rated DC blocking voltage @T <sub>A</sub> =100°C	I <sub>R</sub>	5.0 150.0					μA
Maximum reverse recovery time (Note1)	t <sub>rr</sub>	30			75		ns
Typical junction capacitance (Note2)	C <sub>J</sub>	45			40		pF
Typical thermal resistance (Note3)	R <sub>θJA</sub>	100					°C/W
Operating junction temperature range	T <sub>J</sub>	- 55 ----- + 150					°C
Storage temperature range	T <sub>STG</sub>	- 55 ----- + 150					°C

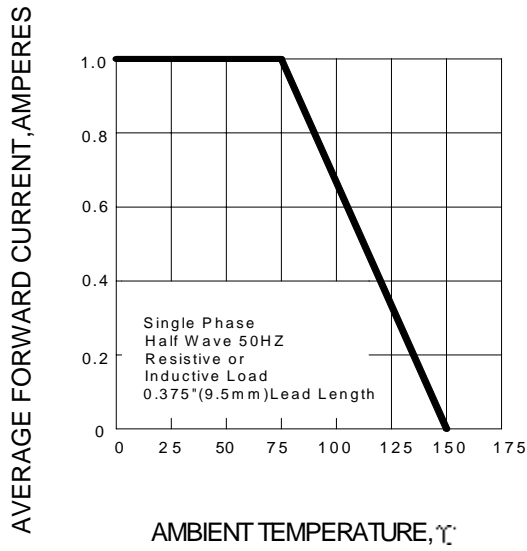
NOTE: 1. Measured with I<sub>F</sub>=0.5A, I<sub>R</sub>=1A, I<sub>rr</sub>=0.25A.

2. Measured at 1MHz and applied reverse voltage of 4.0V DC.

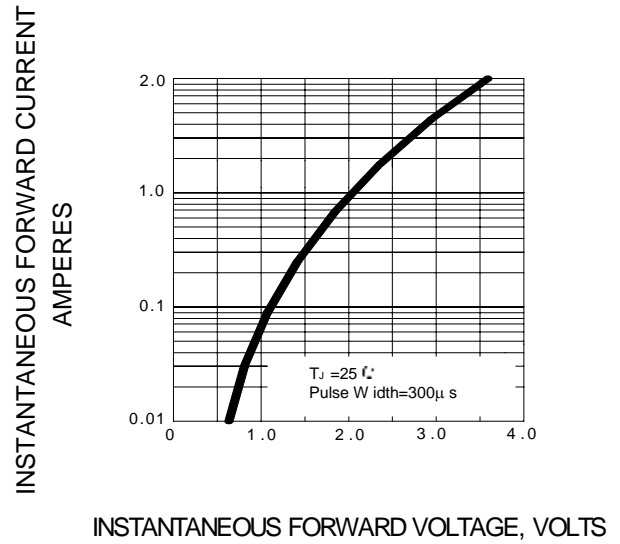
3. Thermal resistance from junction to ambient.



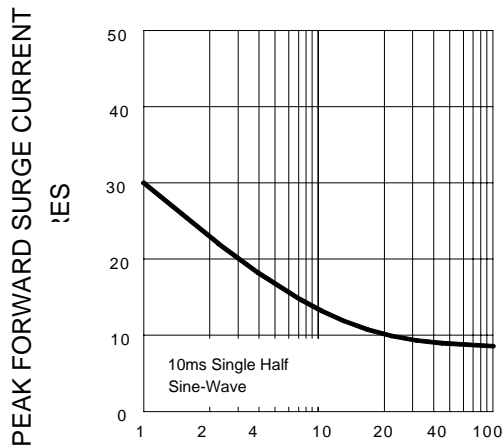
**FIG.1 – FORWARD DERATING CURVE**



**FIG.2 – TYPICAL FORWARD CHARACTERISTIC**



**FIG.3 –PEAK FORWARD SURGE CURRENT**



**FIG.4 – TYPICAL JUNCTION CAPACITANCE**

