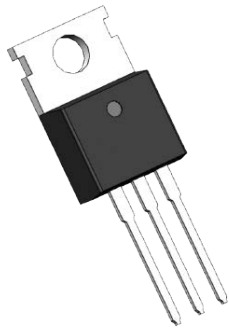
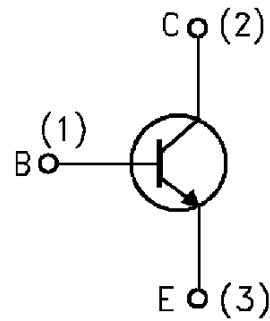


Features:

- High frequency switching power supply
- High frequency power transform
- Commonly power amplifier circuit
- High breakdown voltage
- High current capability
- High switching speed
- High reliability
- RoHS product



Marking and pin assignment



NPN

绝对最大额定值 ABSOLUTE RATINGS (Tc=25°C)

项 目 Parameter	符 号 Symbol	数 值 Value	单 位 Unit
集电极—发射极直流电压 Collector- Emitter Voltage (V _{BE} =0)	V _{CES}	400	V
集电极—发射极直流电压 Collector- Emitter Voltage (I _B =0)	V _{CEO}	200	V
发射极—基极直流电压 Emitter-Base Voltage	V _{EBO}	9	V
最大集电极直流电流 Collector Current (DC)	I _C	7	A
最大集电极脉冲电流 Collector Current (pulse)	I _{CP}	10	A
最大基极直流电流 Base Current (DC)	I _B	4	A
最大基极脉冲电流 Base Current (pulse)	I _{BP}	8	A
最大集电极耗散功率 Total Dissipation (TO-220C)	P _C	60	W
最高结温 Junction Temperature	T _j	150	°C
贮存温度 Storage Temperature	T _{stg}	-55~+150	°C

注: pulse电流宽度为小于5ms的非重复单脉冲。 Pulse Test: Pulse Width = 5.0 ms, Duty Cycle < 10%.

电特性 ELECTRICAL CHARACTERISTIC

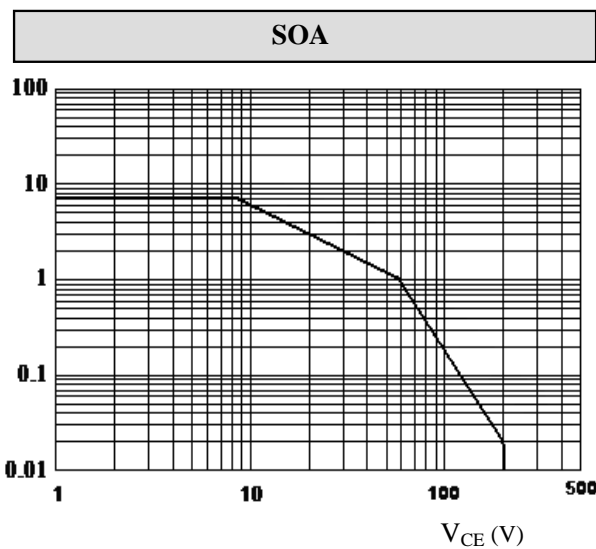
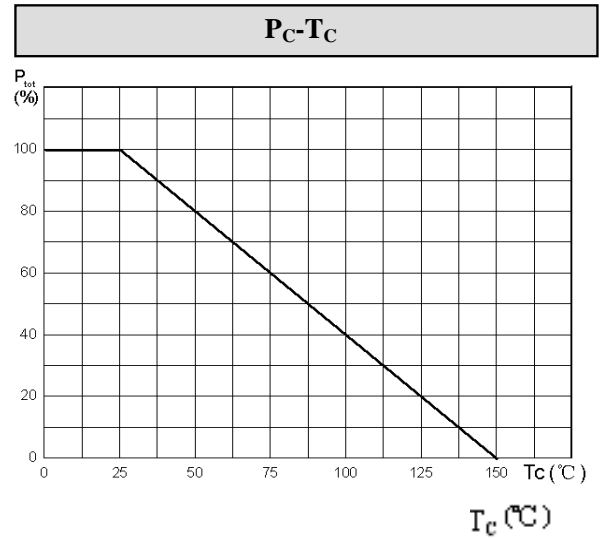
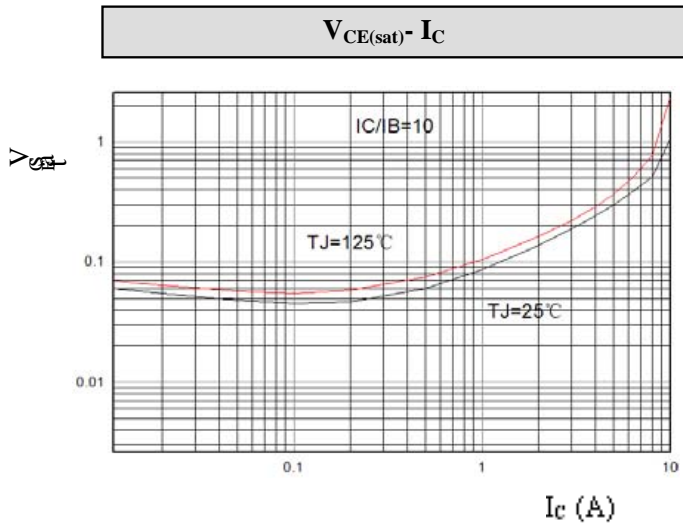
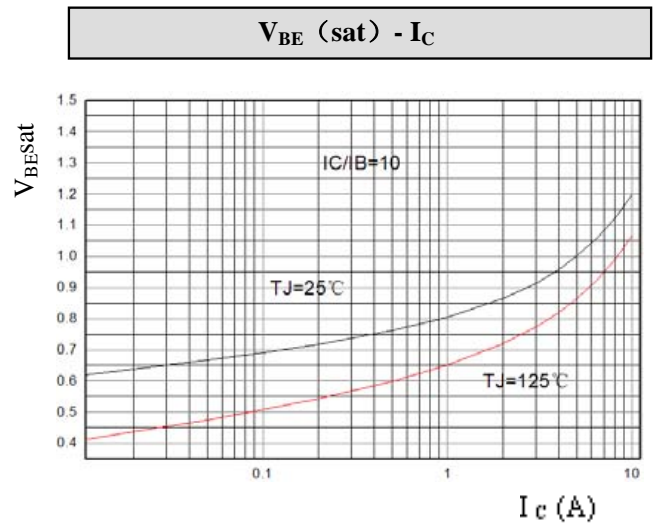
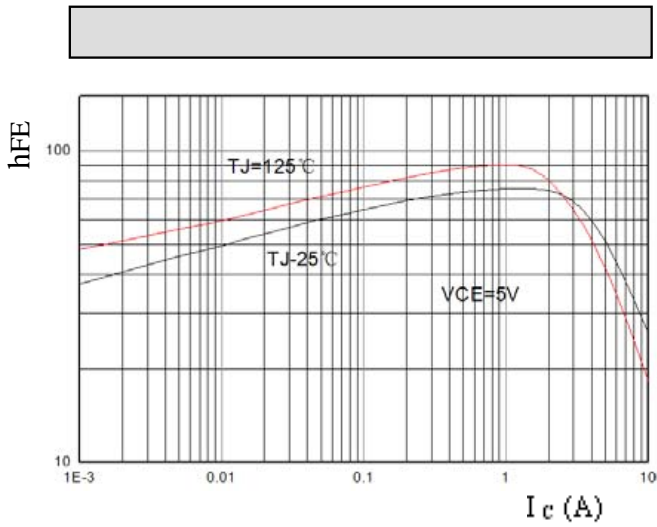
Package Marking and Ordering Information

Part NO.	Marking	Package
BU406	BU406	TO-220

项 目 Parameter	测试条件 Tests conditions	最小值 Value(min)	典型值 Value(typ)	最大值 Value(max)	单位 Unit
$V_{(BR)CEO}$	$I_C=10mA, I_B=0$	200	-	-	
$V_{(BR)CBO}$	$I_C=1mA, I_B=0$	400	-	-	
$V_{(BR)EBO}$	$I_E=1mA, I_C=0$	9	-	-	
I_{CBO}	$V_{CB}=400V, I_E=0$	-			
I_{CEO}	$V_{CE}=200V, I_B=0$	-	-	10	μA
I_{EBO}	$V_{EB}=9V, I_C=0$	-	-	50	μA
$H_{fe}(1)$	$V_{CE}=5V, I_C=2A$	60	-	10	μA
$H_{fe}(2)$	$V_{CE}=5V, I_C=7A$	15	-	85	
$V_{CE(sat)}$	$I_C=5A, I_B=500mA$	-	-	-	
$V_{BE(sat)}$	$I_C=5A, I_B=500mA$	-	-	1.0	V
f_T	$V_{CE}=10V, I_C=0.5A$	10	-	-	
				1.5	V

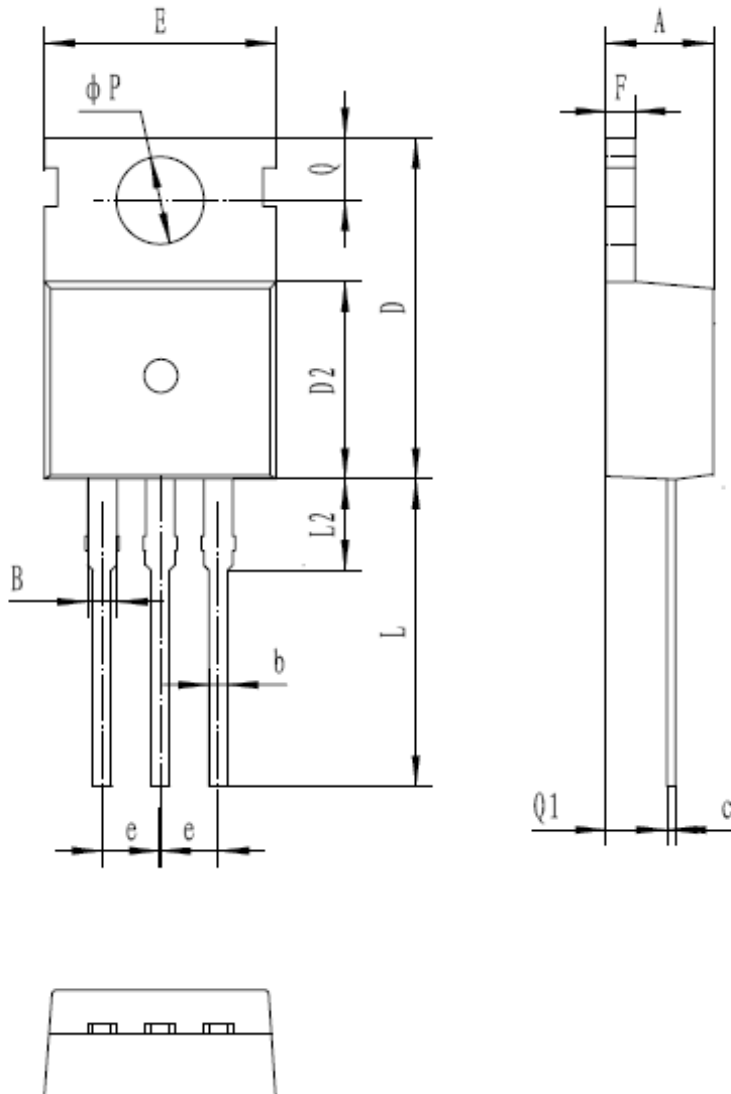
热特性 THERMAL CHARACTERISTIC

项 目 Parameter	符 号 Symbol	最小值 Value(min)	最大值 Value(max)	单 位 Unit
结到管壳的热阻 TO-220C Thermal Resistance Junction Case TO-220C	$R_{th(j-c)}$	-	2.08	$^{\circ}C/W$

特征曲线 ELECTRICAL CHARACTERISTICS (curves)


外形尺寸 PACKAGE MECHANICAL DATA

单位 Unit : mm

TO-220C


符号 symbol	MIN	MAX
A	4.30	4.70
B	1.10	1.40
b	0.70	0.95
c	0.40	0.65
D	15.20	16.20
D2	9.00	9.40
E	9.70	10.10
e	2.39	2.69
F	1.25	1.40
L	12.60	13.60
L2	2.80	3.20
Q	2.60	3.00
Q1	2.20	2.60
P	3.50	3.80