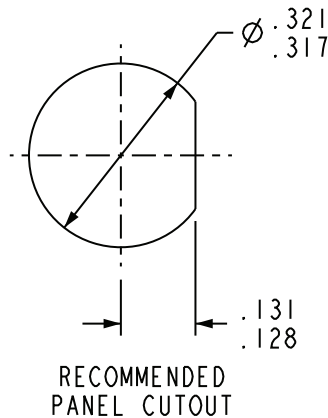
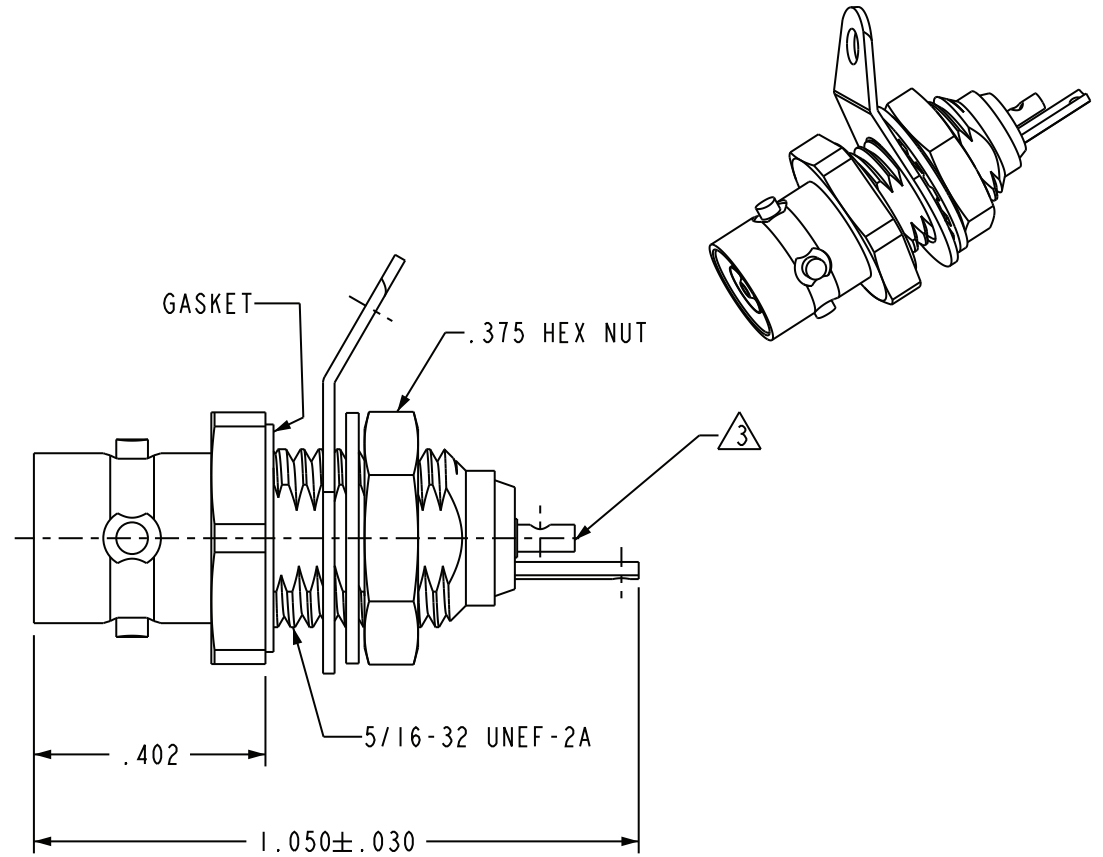
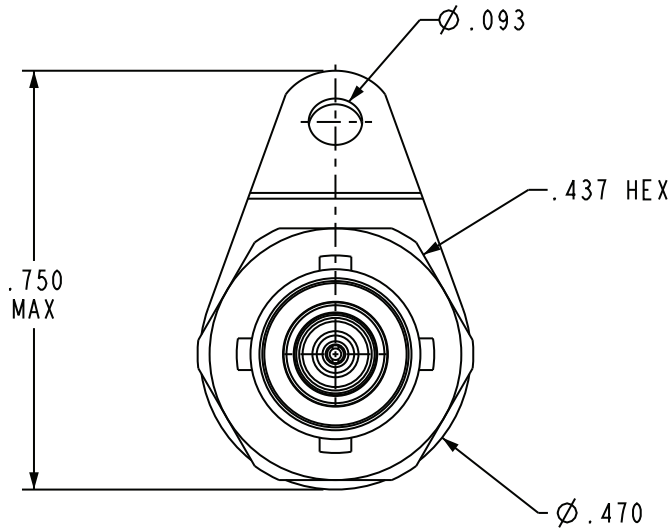


DATA CONTAINED IN THIS DOCUMENT IS PROPRIETARY TO EMERSON CONNECTIVITY SOLUTIONS AND SHALL NOT BE DISCLOSED, COPIED OR USED FOR PROCUREMENT OR MANUFACTURE WITHOUT EXPRESS WRITTEN PERMISSION

REVISIONS			
REV	DESCRIPTIONS	DATE	APPROVED
K	ECO 53226	4-15-11	T. KOHLER



4. SUBMINIATURE TRIAXIAL SOLDER POT BULKHEAD MOUNT 4-LUG RECEPTACLE (TPS STYLE)

△ SOLDER POT ACCEPTS $\varnothing .034$ MAXIMUM CONDUCTOR

2. MAXIMUM PANEL THICKNESS: .187

1. FINISH: TFS-1A (NICKEL)

NOTES: UNLESS OTHERWISE SPECIFIED.

INTERPRET DRAWING PER MIL-STD-100. DIMENSIONS ARE IN INCHES AND INCLUDE FINISH THICKNESS UNLESS OTHERWISE SPECIFIED.		TOL: UNLESS SPECIFIED. .XX ± .02 .XXX ± .010 ANGLE ± 1°		 Connectivity Solutions 299 Johnson Ave. Ste. 100 Waseca, MN 56093 1-800-247-8256	
DRN L M'CLENNAN	6-28-11	MATERIAL:		TITLE: BJ157FL	
CHK B RYAN	6-29-11	FINISH:		SIZE △ 14949	CAGE CODE 305-0377
QUALITY				DRAWING NO.	REV. K
MANUF				DATE	2-28-79
APPROVED				SHEET	1 OF 2
SURFACE AREA	PROF TITLE NO. 305-0377	DO NOT SCALE DWG		SCALE	1/1