

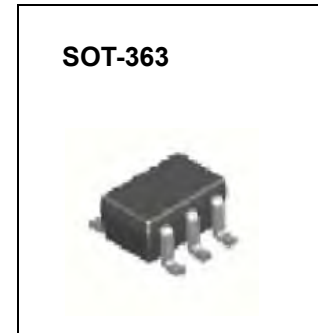
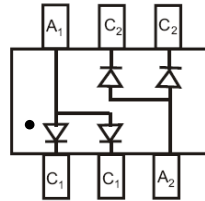


SOT-363 Plastic-Encapsulate Diode

SWITCHING DIODE

FEATURES

- Fast Switching Speed
- Ultra-Small Surface Mount Package
- For General Purpose Switching Applications
- High Conductance
- **Pb-Free package is available**
RoHS product for packing code suffix "G"
Halogen free product for packing code suffix "H"
- Moisture Sensitivity Level 1



MAKING: KJC

Maximum Ratings @T_A=25°C

Parameter	Symbol	Limits	Unit
Peak Repetitive Peak reverse voltage	V _{RRM}	75	V
Working Peak Reverse Voltage	V _{RWM}		
DC Blocking Voltage	V _R		
Forward Continuous Current	I _{FM}	300	mA
Average Rectified Output Current	I _O	150	mA
Non-Repetitive Peak Forward Surge Current	I _{FSM}	2	A
		@ t = 1.0μs	
	@ t = 1.0s	1	
Power Dissipation	P _D	200	mW
Thermal Resistance Junction to Ambient Air	R _{θJA}	625	°C/W
Operating Junction Temperature	T _J	150	°C
Storage temperature	T _{STG}	-55-150	°C

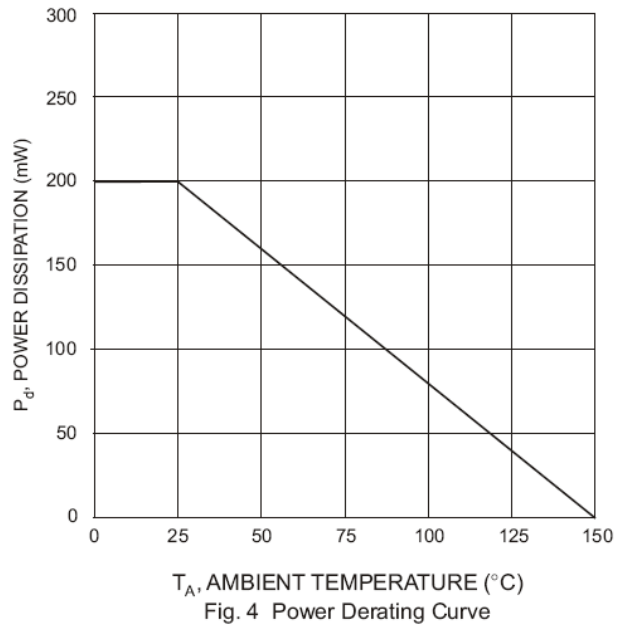
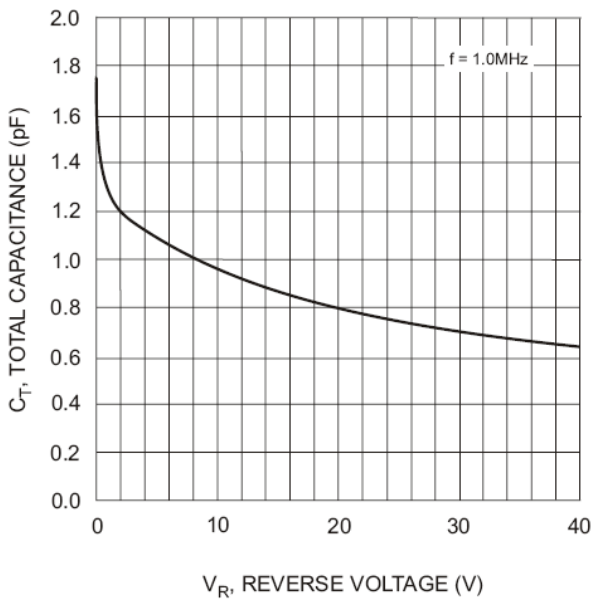
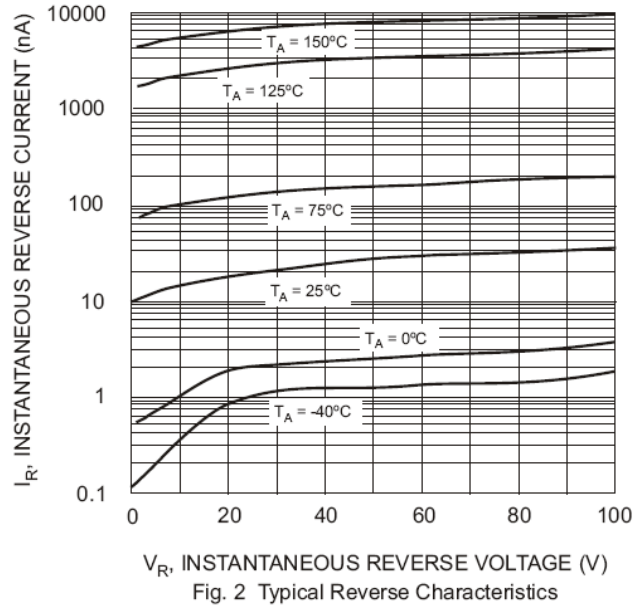
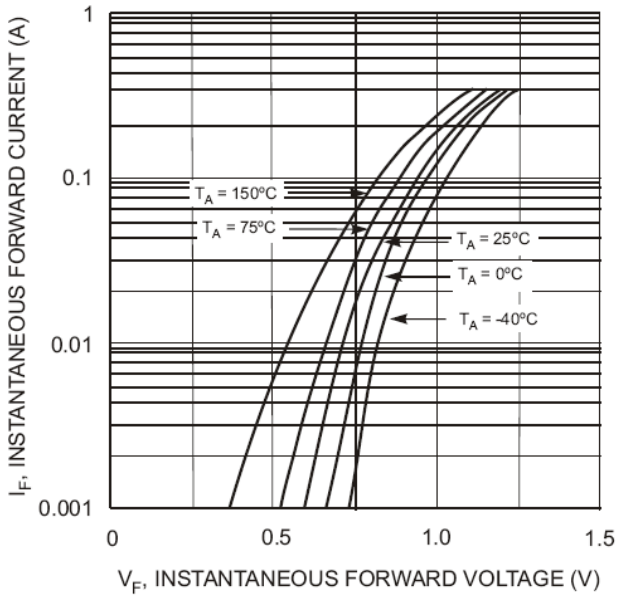
ELECTRICAL CHARACTERISTICS (T_{amb}=25°C unless otherwise specified)

Parameter	Symbol	Test conditions	MIN	MAX	UNIT
Reverse breakdown voltage	V _{(BR)R}	I _R = 2.5μA	75		V
Reverse voltage leakage current	I _R	V _R =75V V _R =20V		2.5 0.025	μA
Forward voltage	V _F	I _F =1mA I _F =10mA I _F =50mA I _F =150mA		715 855 1000 1250	mV
Junction capacitance	C _T	V _R =0, f=1MHz		2	pF
Reveres recovery time	t _{rr}	I _F =I _R =10mA, I _{rr} =0.1×I _R , R _L =100Ω		4	nS



SOT-363 Plastic-Encapsulate Diode

Typical Characteristics





WILLAS

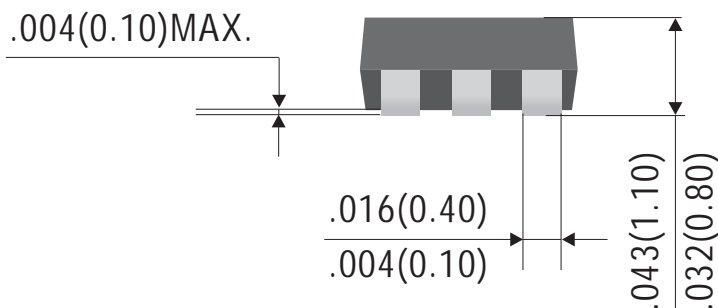
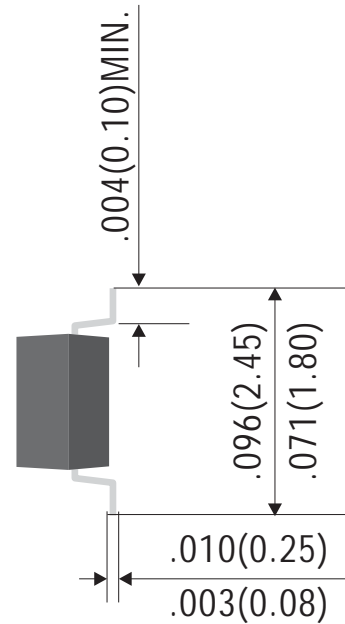
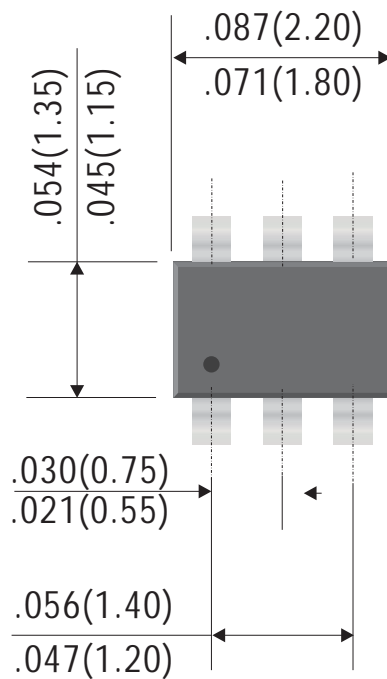


BAW56DW

SOT-363 Plastic-Encapsulate Diode

Outline Drawing

SOT-363



Dimensions in inches and (millimeters)

Rev.D