

## AH21AZ(AHD)

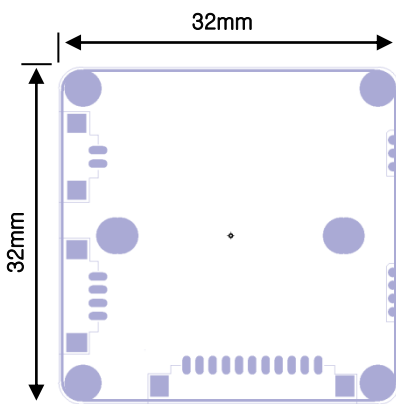
2.1Mega pixel AHD Camera



### Features

- 2.1Mega CMOS Sensor
- AHD Resolution : 1080p 30fps
- SMART IR
- UTC
- Privacy Mask Function
- Motion Detection
- FLIP
- LANGUAGE : ENGLISH / 中文
- Dimension : 32mm x 32mm

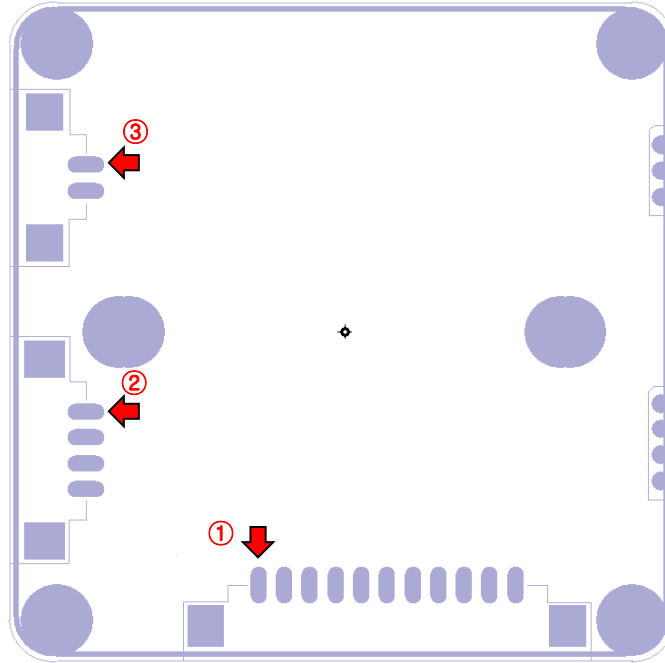
### Dimensions



### Specifications

AH21AZ (AHD)	
Resolution	1080p AHD
Pixel size	3.0um X 3.0um
Active Pixels	1930(H) X 1088(V) = 2,099,840(pixel)
Shutter Speed	Auto / Manual (1/30(1/25) ~ 1/10000) Flicker : 60HZ, 50HZ OFF
Dynamic range	66.5dB
S/N Ratio	39.9dB
DAY & NIGHT	AUTO/COLOR/B&W/EXT
SMART IR	OFF/ 0~64
WHITE BALANCE	AUTO/PUSH/USER/HOLD/3200K/4200K/6000K/8000K
MIRROR	ON/OFF
PRIVACY	OFF/ON (2 AREA)
MOTION	OFF/ON
FLIP	OFF/ON
LANGUAGE	ENGLISH / 中文
HLC	OFF/ON
BLC	0 ~ 16
SYSTEM	FPS 25FPS / 30FPS
Operating Temp./Hum	-10℃ ~ +50℃ / Max 90%RH
Power Input	DC 12V
Power Consumption	150mA
Size	32 x 32 mm

## Connector Pin map



Connector	Pin number	Pin name	Description
①	1	GND	Board Ground
	2	12V	DC 12V input
	3	AHD	AHD Video Output
	4	GND	Board Ground
	5	E-V	Extra Composite Video Output
	6	KEY DOWN	OSD KEY DOWN
	6	KEY UP	OSD KEY UP
	7	KEY SET	OSD KEY SET
	8	KEY RIGHT	OSD KEY RIGHT
	9	KEY LEFT	OSD KEY LEFT
10	MD	Motion Detection	
②	1	12V	DC 12V Output
	2	GND	Board Ground
	3	DN_SEL IN	Day & Night Input (H/L)
	4	IR	IR LED Output
③	1	TDN MA +	DRIVE1
	2	TDN MA -	DRIVE2