



DESCRIPTION

The A6151A series is a set of three-terminal middle current low voltage regulator implemented in CMOS technology. They can deliver 100mA output current and allow an input voltage as high as 18V. They are available with several fixed output voltages ranging from 3.0V to 8.0V. CMOS technology ensures low voltage drop and low quiescent current.

A6151A is available in SOT89-3 and TO-92 packages.

FEATURES

- Low power: 2uA (typ.)
- Low voltage drop: 100mV @ $I_{OUT}=1mA$
- Low temperature coefficient : $< \pm 100ppm/^{\circ}C$
- High input voltage : 18V
- Maximum output current : 100mA
- Available in SOT89-3 and TO-92 Packages

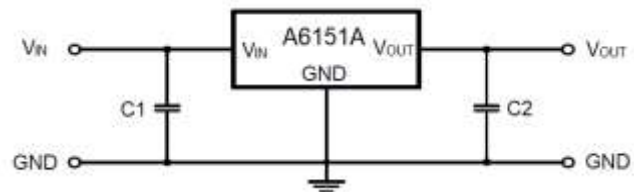
APPLICATION

- Battery-powered equipment
- Communication equipment
- Audio/Video equipment

ORDERING INFORMATION

| Package Type | Part Number | |
|--------------------------------|---|---------------|
| SOT89-3 SPQ: 1,000pcs/Reel | K3 | A6151AK3R-XX |
| | | A6151AK3VR-XX |
| TO-92 SPQ: 1,000pcs/Bag | Z | A6151AZB-XX |
| | | A6151AZVB-XX |
| Note | XX: Output Voltage, 30=3.0V, 33=3.3V, 50=5.0V V: Halogen free Package R: Tape & Reel B: Bulk Packing | |
| AiT provides all RoHS products | | |

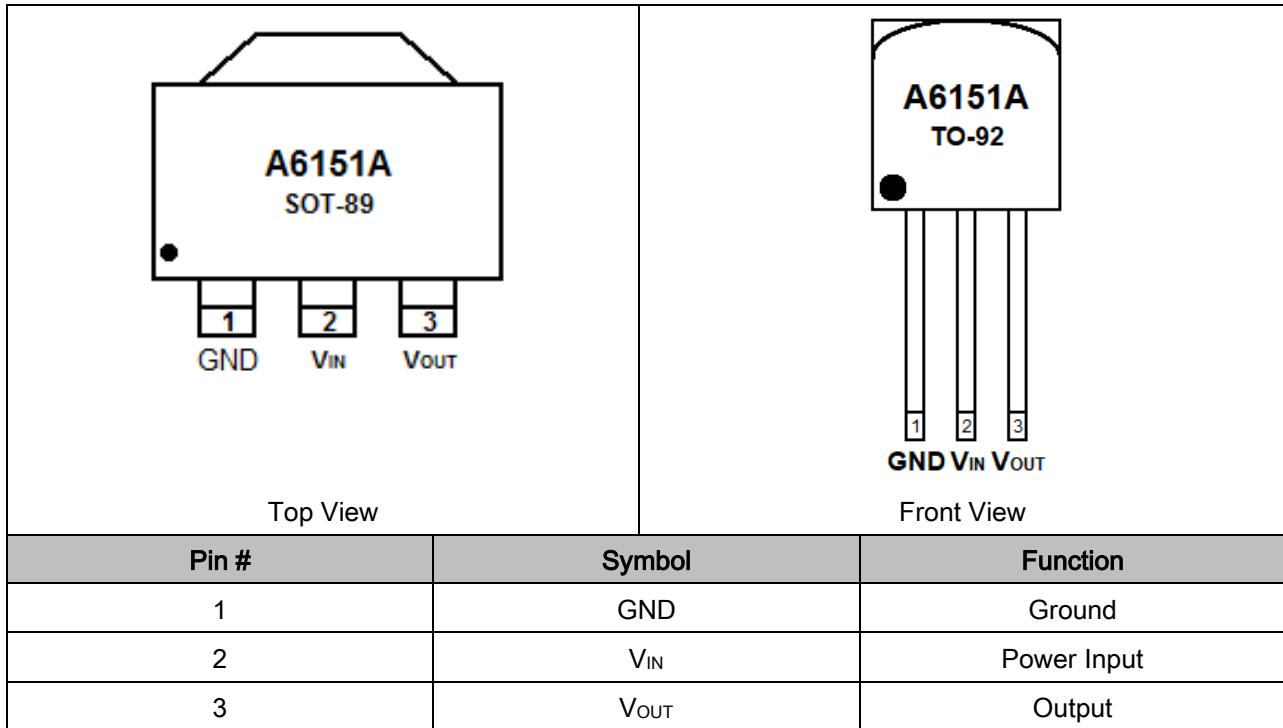
TYPICAL APPLICATION



Note: $C_{IN}(C1) \geq 10\mu F$; $C_{OUT}(C2) \geq 10\mu F$.



PIN DESCRIPTION





ABSOLUTE MAXIMUM RATINGS

| | | |
|---|----------------|-------|
| V_{IN} , Input Voltage | -0.3V~18V | |
| P_D , Power Dissipation | SOT89-3 | 500mW |
| | TO-92 | 300mW |
| T_{OPR} , Operating Ambient Temperature | -40°C ~ +85°C | |
| T_{STG} , Storage Temperature | -40°C ~ +125°C | |

Stresses above may cause permanent damage to the device. These are stress ratings only, and functional operation of the device at these or any other conditions beyond those indicated in the Electrical Characteristics is not implied. Exposure to absolute maximum rating conditions for extended periods may affect device reliability.

ELECTRICAL CHARACTERISTICS

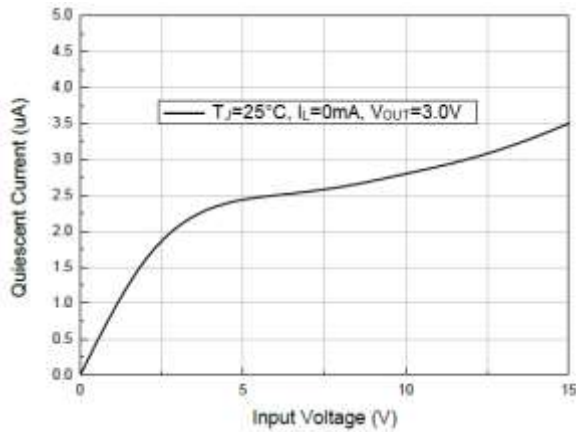
$T_A=25^\circ\text{C}$

| Parameter | Symbol | Test Conditions | | Min. | Typ. | Max. | Unit |
|------------------------------------|---|-----------------|---|-----------------------|-------------------------------------|-----------------------|------------------------------------|
| | | V_{IN} | Conditions | | | | |
| Output Voltage Tolerance | V_{OUT} | $V_{OUT}+2V$ | $I_{OUT}=10\text{mA}$ | $0.98 \times V_{OUT}$ | V_{OUT} | $1.02 \times V_{OUT}$ | V |
| Output Current | I_{OUT} | $V_{OUT}+2V$ | | 60 | 100 | 120 | mA |
| Load Regulation | ΔV_{OUT} | $V_{OUT}+2V$ | $1\text{mA} \leq I_{OUT} \leq 50\text{mA}$ | - | 60 | 150 | mV |
| Voltage Drop | V_{DROP} | | $I_{OUT}=1\text{mA}$ | - | 100 | - | mV |
| Current Consumption | I_{SS} | $V_{OUT}+2V$ | No Load | - | 2 | 4 | uA |
| Output Shorted Current | I_{SHORT} | $V_{OUT}+2V$ | V_{OUT} Connected to ground | 20 | - | 80 | mA |
| Line Regulation | $\frac{\Delta V_{OUT}}{\Delta V_{IN} \times V_{OUT}}$ | | $V_{OUT}+2V \leq V_{IN} \leq 18$ $I_{OUT}=1\text{mA}$ | - | 0.2 | - | %/V |
| | | | | | | | |
| Input Voltage | V_{IN} | | | - | - | 18 | V |
| Temperature Coefficient | $\frac{\Delta V_{OUT}}{\Delta T_A}$ | $V_{OUT}+2V$ | $I_{OUT}=10\text{mA}$ $-40^\circ\text{C} \leq T_A \leq 85^\circ\text{C}$ | - | $\pm 0.45 \times \frac{V_{OUT}}{3}$ | - | $\frac{\text{mV}}{^\circ\text{C}}$ |
| | | | | | | | |
| Power Supply Ripple Rejection Rate | PSRR | | $f=1.0\text{kHz}$ | - | - | 40 | dB |

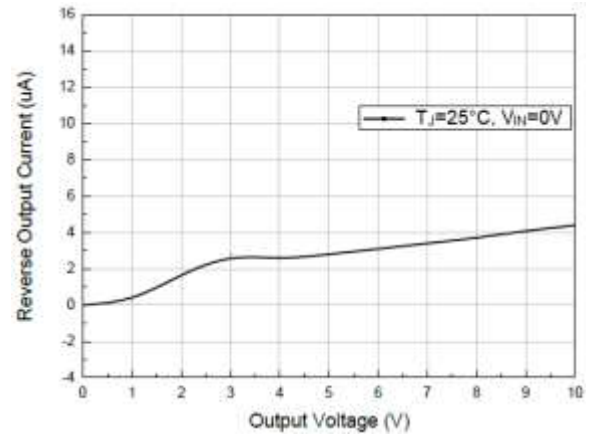


TYPICAL PERFORMANCE CHARACTERISTICS

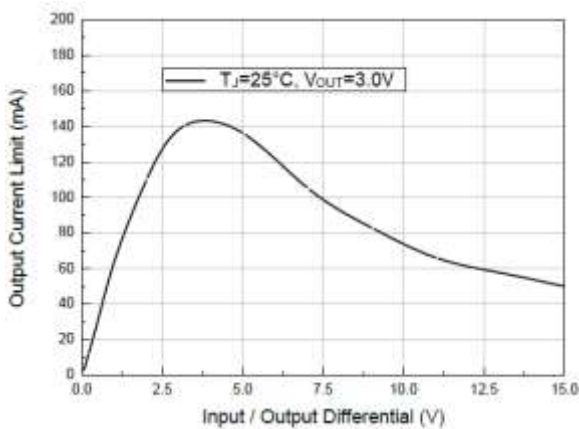
1. Quiescent Current vs. Input Voltage



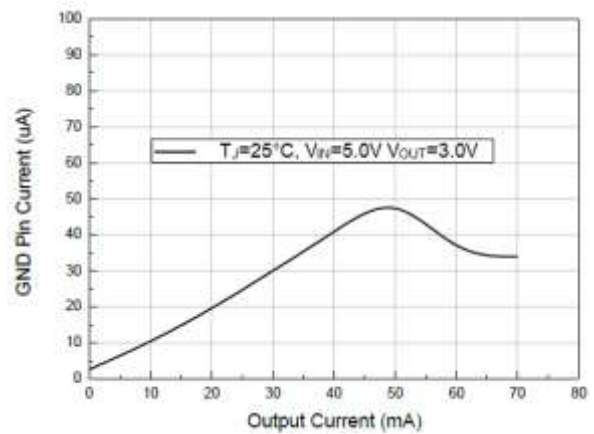
2. Reverse Output Current vs. Output Voltage



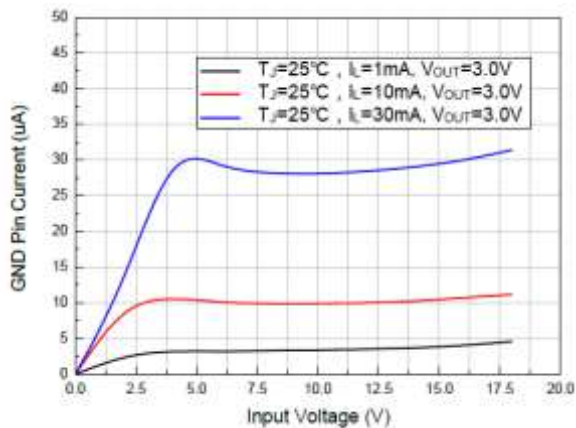
3. Current Limit vs. $V_{IN}-V_{OUT}$



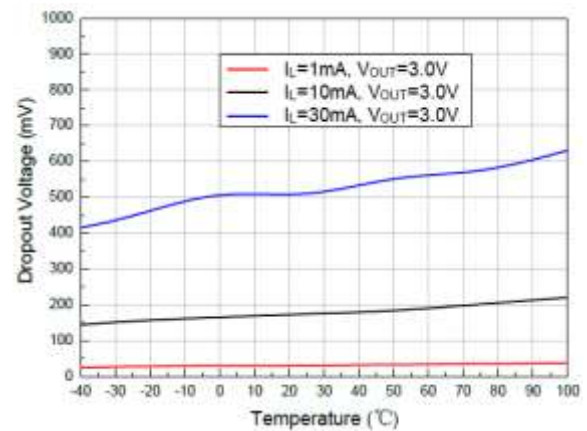
4. GND Pin Current vs. Output Current



5. GND Pin Current vs. Input Voltage

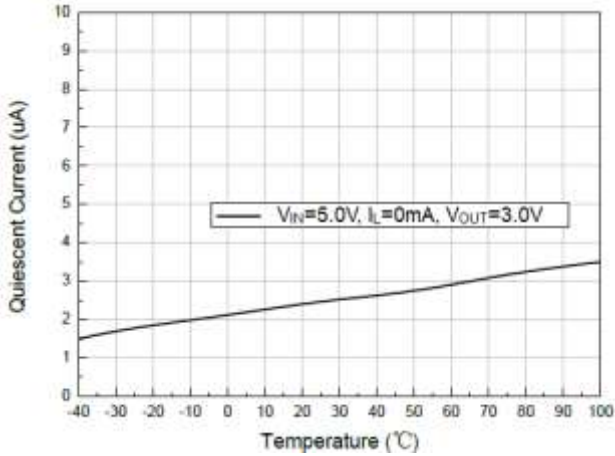


6. Dropout Voltage vs. Temperature

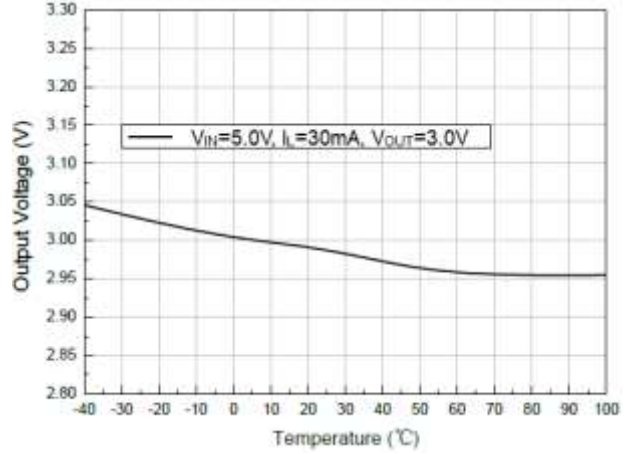




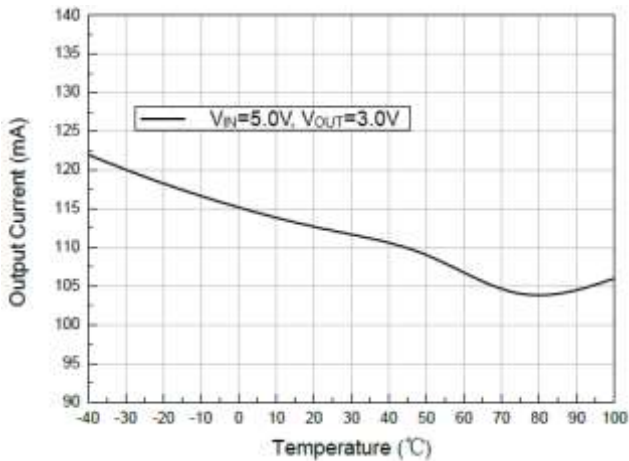
7. Quiescent Current vs. Temperature



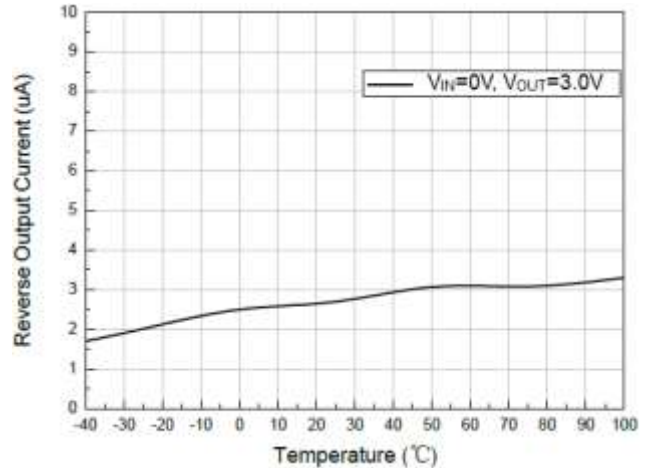
8. Output Voltage vs. Temperature



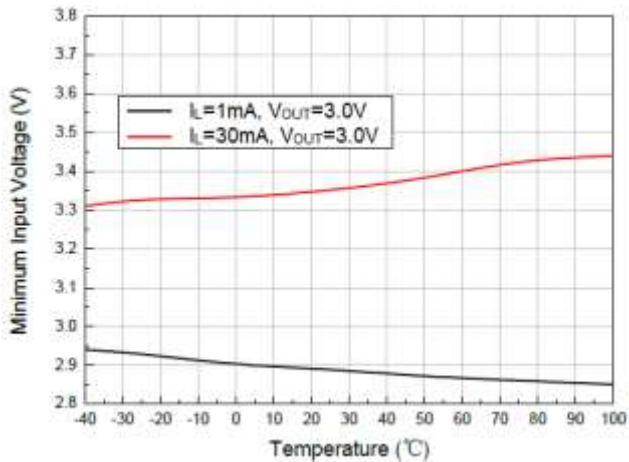
9. Output Current vs. Temperature



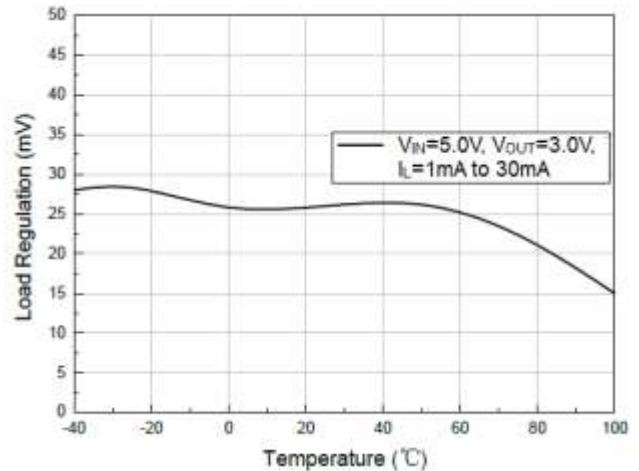
10. Reverse Output Current vs. Temperature



11. Minimum Input Voltage vs. Temperature



12. Load Regulation vs. Temperature

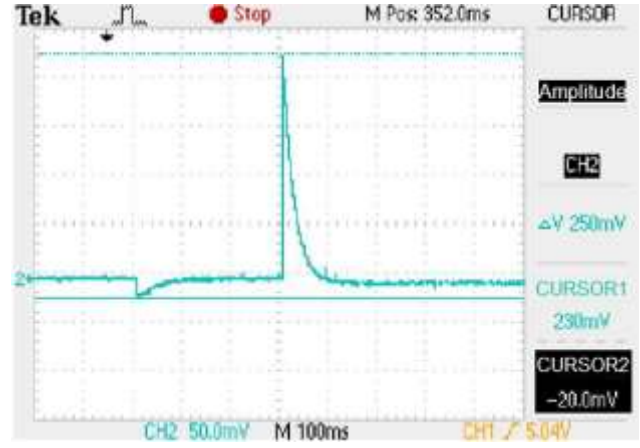




13. Input voltage transient response ($I_L=10\text{mA}$)

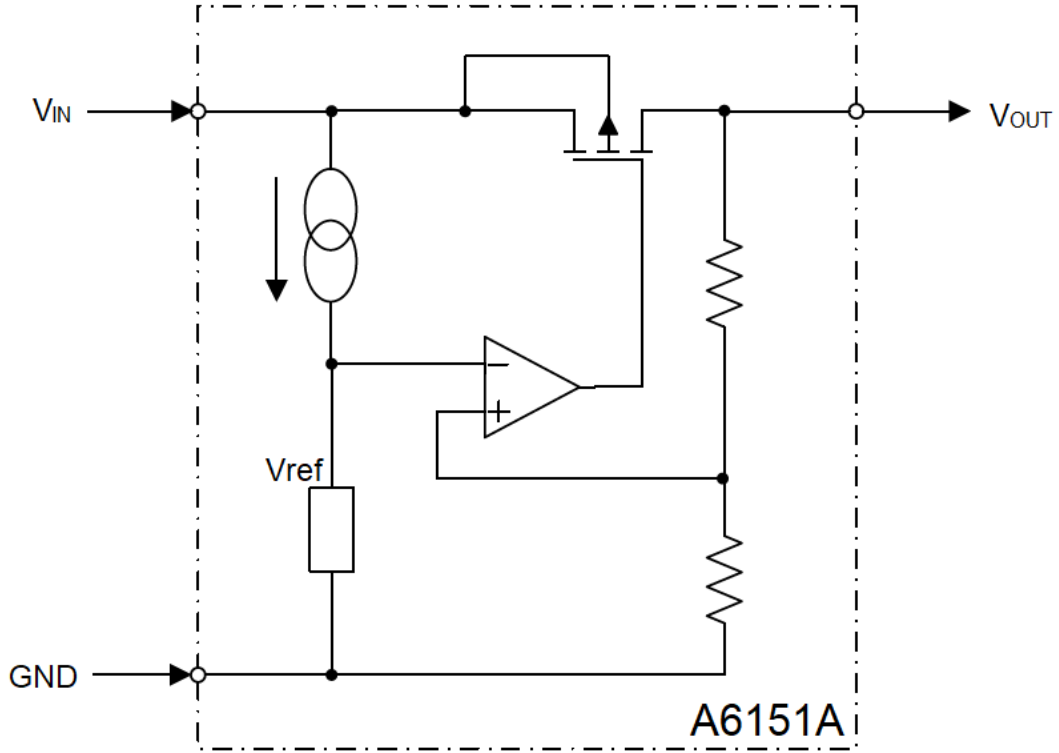


14. Load transient response ($V_{IN}=4.3\text{V}$, $I_L=0-70-0\text{mA}$)





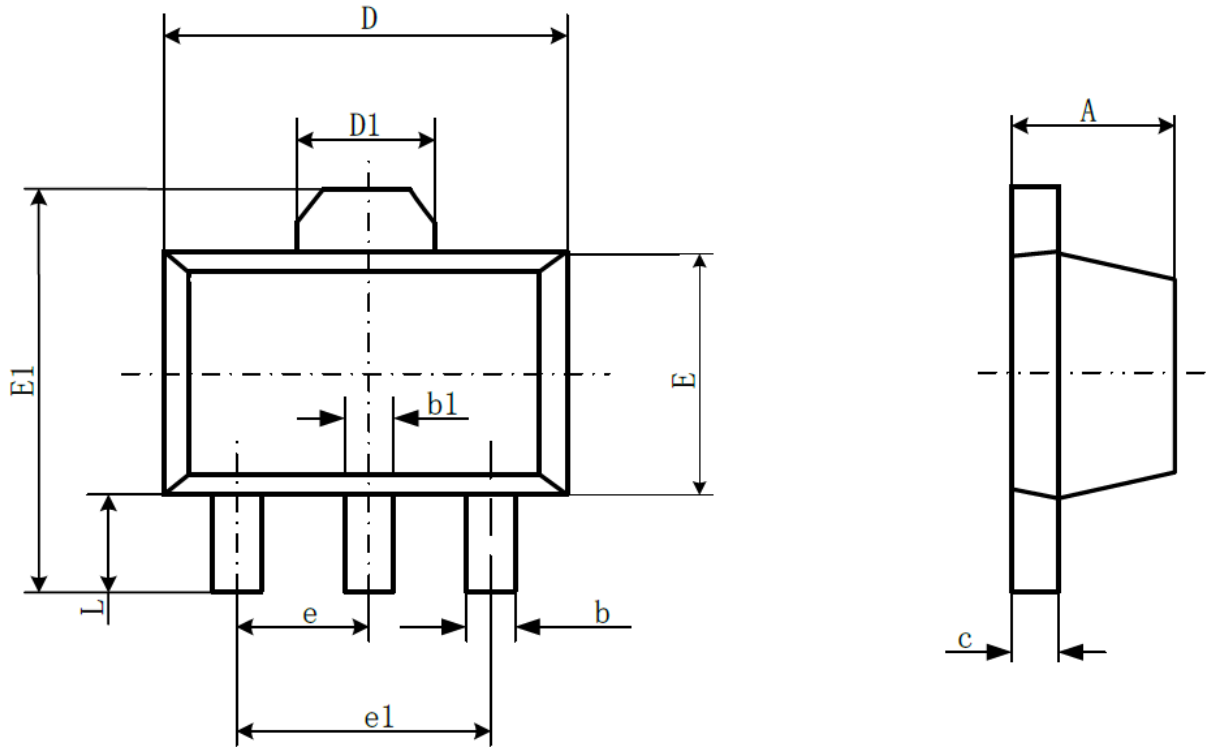
BLOCK DIAGRAM





PACKAGE INFORMATION

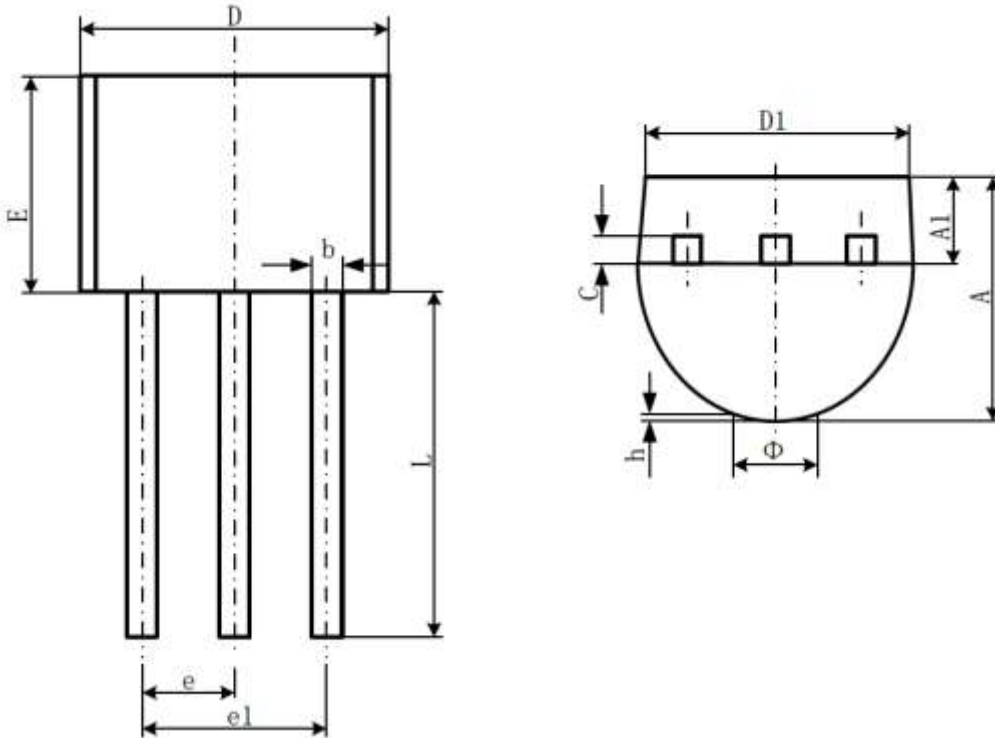
Dimension in SOT89-3 (Unit: mm)



| Symbol | Millimeters | | Inches | |
|--------|-------------|-------|-----------|-------|
| | Min | Max | Min | Max |
| A | 1.400 | 1.600 | 0.055 | 0.063 |
| b | 0.320 | 0.520 | 0.013 | 0.020 |
| b1 | 0.400 | 0.580 | 0.016 | 0.023 |
| c | 0.350 | 0.440 | 0.014 | 0.017 |
| D | 4.400 | 4.600 | 0.173 | 0.181 |
| D1 | 1.550 REF | | 0.061 REF | |
| E | 2.300 | 2.600 | 0.091 | 0.102 |
| E1 | 3.940 | 4.250 | 0.155 | 0.167 |
| e | 1.500 TYP | | 0.060 TYP | |
| e1 | 3.000 TYP | | 0.118 TYP | |
| L | 0.900 | 1.200 | 0.035 | 0.047 |



Dimension in TO-92 (Unit: mm)



| Symbol | Millimeters | | Inches | |
|--------|-------------|--------|-----------|-------|
| | Min | Max | Min | Max |
| A | 3.300 | 3.700 | 0.130 | 0.146 |
| A1 | 1.100 | 1.400 | 0.043 | 0.055 |
| b | 0.380 | 0.550 | 0.015 | 0.022 |
| c | 0.360 | 0.510 | 0.014 | 0.020 |
| D | 4.400 | 4.700 | 0.173 | 0.185 |
| D1 | 3.430 | - | 0.135 | - |
| E | 4.300 | 4.700 | 0.169 | 0.185 |
| e | 1.270 TYP | | 0.050 TYP | |
| e1 | 2.440 | 2.640 | 0.096 | 0.104 |
| L | 14.100 | 14.500 | 0.555 | 0.571 |
| Φ | - | 1.600 | - | 0.063 |
| h | 0.000 | 0.380 | 0.000 | 0.015 |



IMPORTANT NOTICE

AiT Semiconductor Inc. (AiT) reserves the right to make changes to any its product, specifications, to discontinue any integrated circuit product or service without notice, and advises its customers to obtain the latest version of relevant information to verify, before placing orders, that the information being relied on is current.

AiT Semiconductor Inc.'s integrated circuit products are not designed, intended, authorized, or warranted to be suitable for use in life support applications, devices or systems or other critical applications. Use of AiT products in such applications is understood to be fully at the risk of the customer. As used herein may involve potential risks of death, personal injury, or server property, or environmental damage. In order to minimize risks associated with the customer's applications, the customer should provide adequate design and operating safeguards.

AiT Semiconductor Inc. assumes to no liability to customer product design or application support. AiT warrants the performance of its products of the specifications applicable at the time of sale.