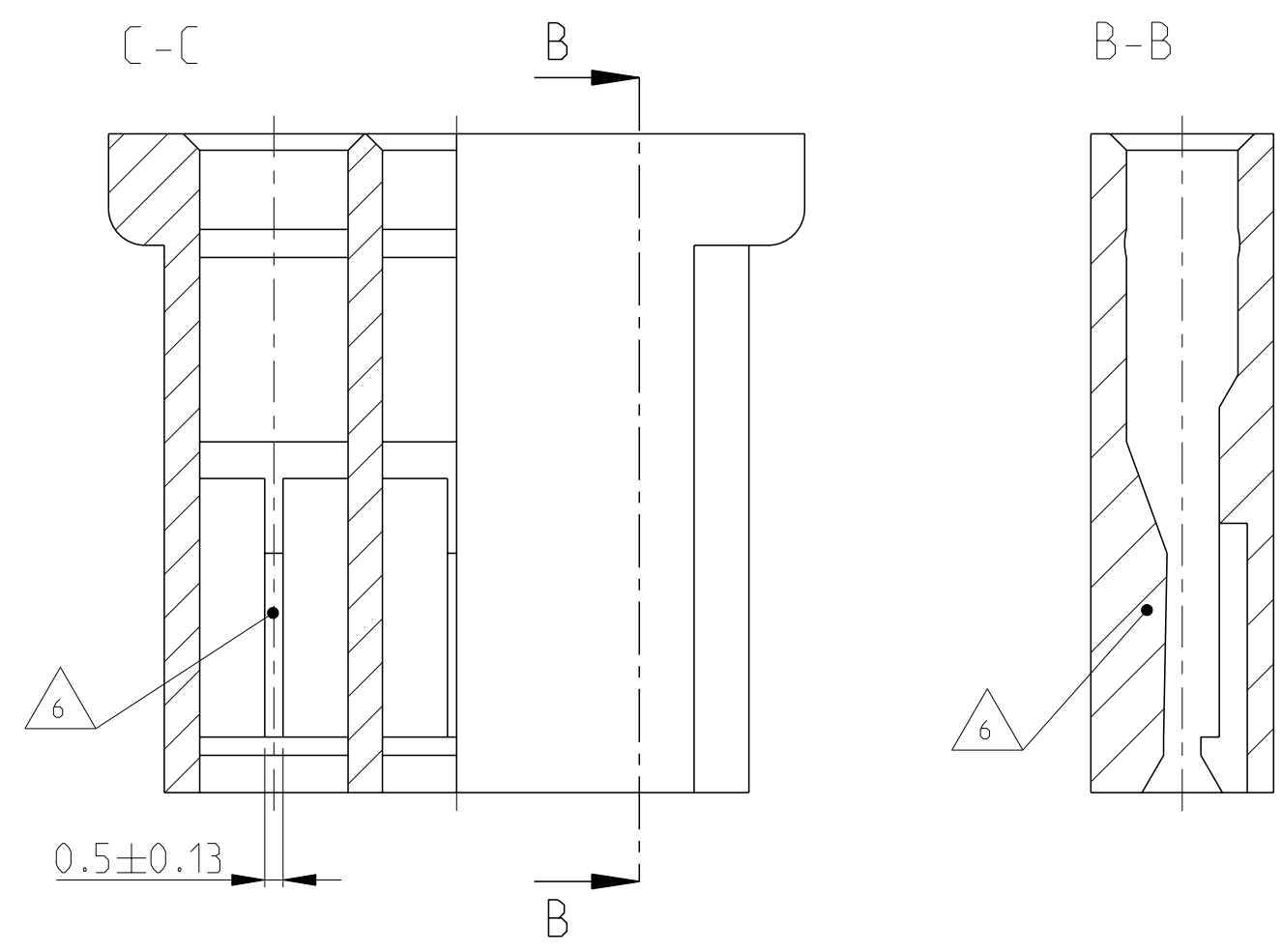
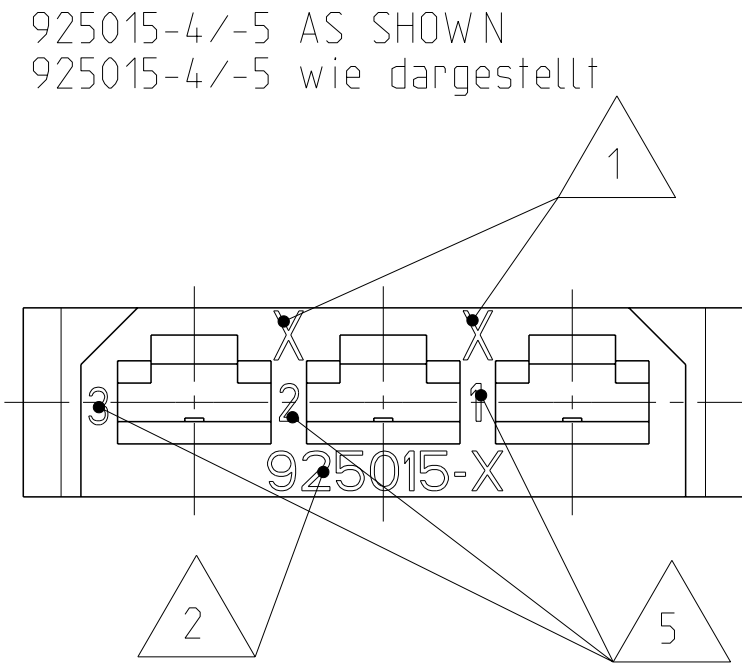
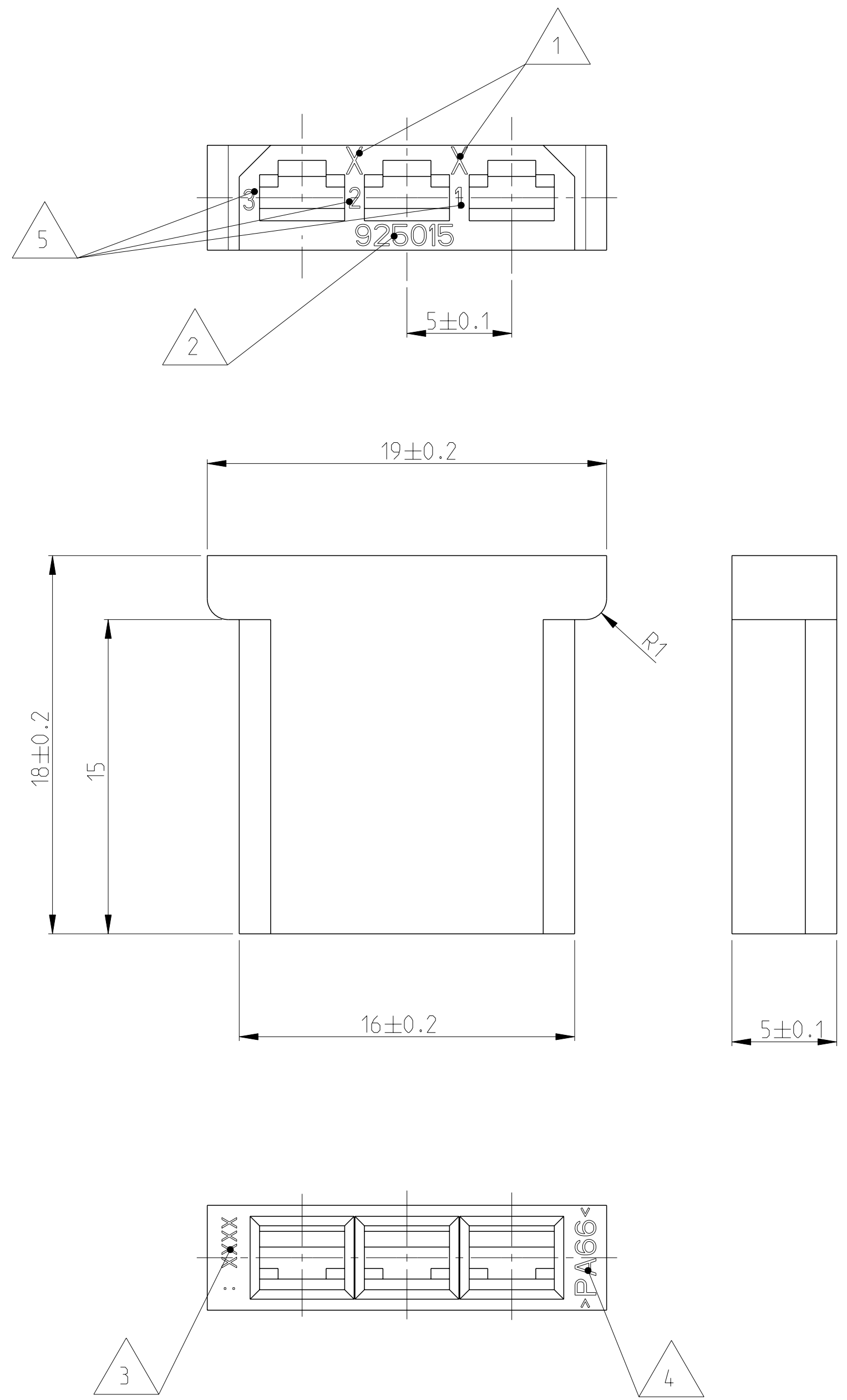
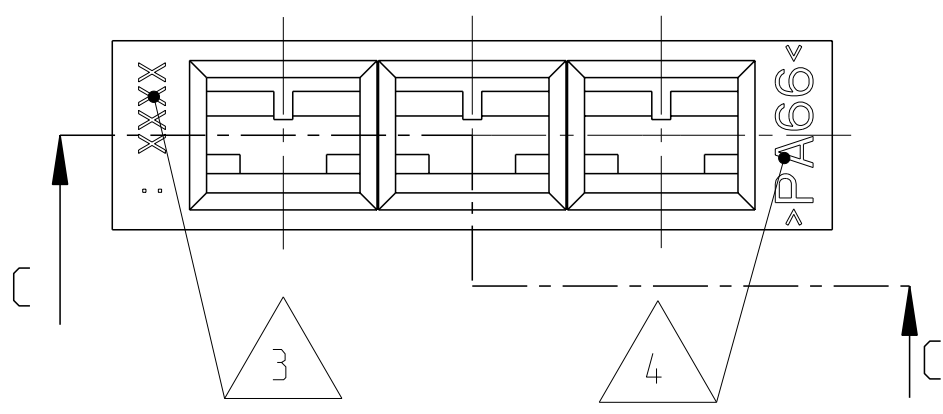


THIS DRAWING IS UNPUBLISHED. RELEASED FOR PUBLICATION 2006  
 © COPYRIGHT 2006 BY - ALL RIGHTS RESERVED.

LOC		DIST		REVISIONS			
P	LTR	DESCRIPTION	DATE	DWN	APVD		
E3		Drawing update	16NOV2004	Haas	Stre.		
E4		PN 925015-4 added	28MAR2006	Haas	Stre.		
E5		REVISED PER ECO-11-005150	03MAY2011	RK	HMR		
E6		New packaging variant 925015-5	07NOV2012	Mah.	Schin		



- NOTES  
Bemerkungen
- 1 MOULD CAVITY NUMBER  
Werkzeugnestzahl
  - 2 PART NUMBER  
Teilenummer
  - 3 ARTWORK LOGO  
Firmenzeichen
  - 4 MATERIAL MARKING  
Werkstoffkennzeichnung
  - 5 CHAMBER NUMBER  
Kammernummer
  - 6 CODING RIB  
Kodiersteg
  - 7 WEIGHT: 925015-0/-1/-2/-3 - 0,94g  
WEIGHT: 925015-4 - 0,98g  
Gewicht: 925015-0/-1/-2/-3 - 0,94g  
Gewicht: 925015-4 - 0,98g
  - 8 PACKAGING VARIANT  
Verpackungsvariante



ORDER-NO.	REV	DESCRIPTION	MATERIAL	COLOUR
925015-5	8	3POS. HOUSING	PA6.6	NATURAL
925015-4	6	3POS. HOUSING	PA6.6	NATURAL
925015-3	E	3POS. HOUSING	PA6.6 (ZYTEL 101)	NATURAL
925015-2	E	3POS. HOUSING	PA6.6	RED
925015-1	E	3POS. HOUSING	PA6.6	BLACK
925015-0	E	3POS. HOUSING	PA6.6	NATURAL

THIS DRAWING IS A CONTROLLED DOCUMENT.

DWN Haas.C. 21MAR2005  
 CHK Stredak.F. 22MAR2005  
 APVD Bleicher.M. 31MAR2005

TE Connectivity

NAME 3POS. FASTIN-FASTON REC. HSG. SER.110  
 3pol. F.F. Steckhuelsengehaeuse SERIE 2.8

SIZE CAGE CODE DRAWING NO. RESTRICTED TO  
 A2 00779 C-925015

SCALE 5:1 SHEET 1 OF 1 REV. E6

Customer Drawing