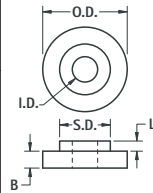
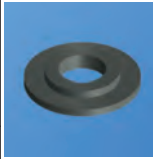


FIBRE SHOULDER WASHERS

MATERIAL: Fibre, Commercial Grade per ASTM D710

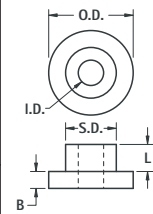
| CAT. NO. | L | O.D. | B | I.D. | S.D. | SCREW SIZE |
|----------|------------|-------------|-------------|------------|-------------|------------|
| 3229 | .025 (.64) | .250 (6.4) | .047 (1.2) | .093 (2.4) | .123 (3.1) | #2 |
| 3061 | .025 (.64) | .250 (6.4) | .047 (1.2) | .093 (2.4) | .156 (4.0) | |
| 344 | .015 (.38) | .312 (7.9) | .062 (1.57) | .125 (3.2) | .203 (5.2) | #4 |
| 343 | .025 (.64) | .312 (7.9) | .062 (1.57) | .125 (3.2) | .203 (5.2) | |
| 3062 | .031 (.79) | .250 (6.4) | .031 (.79) | .115 (2.9) | .187 (4.7) | |
| 3230 | .031 (.79) | .281 (7.1) | .062 (1.57) | .115 (2.9) | .175 (4.4) | |
| 3231 | .031 (.79) | .312 (7.9) | .062 (1.57) | .120 (3.1) | .180 (4.6) | #6 |
| 4698 | .031 (.79) | .250 (6.4) | .062 (1.57) | .140 (3.6) | .187 (4.7) | |
| 3064 | .031 (.79) | .312 (7.9) | .062 (1.57) | .140 (3.6) | .187 (4.7) | |
| 3232 | .031 (.79) | .375 (9.5) | .062 (1.57) | .140 (3.6) | .210 (5.3) | |
| 3233 | .031 (.79) | .375 (9.5) | .062 (1.57) | .140 (3.6) | .240 (6.1) | |
| 3234 | .031 (.79) | .500 (12.7) | .062 (1.57) | .140 (3.6) | .240 (6.1) | |
| 3065 | .031 (.79) | .375 (9.5) | .062 (1.57) | .170 (4.3) | .246 (6.2) | #8 |
| 3066 | .031 (.79) | .417 (10.6) | .062 (1.57) | .170 (4.3) | .210 (5.3) | |
| 3235 | .031 (.79) | .312 (7.9) | .062 (1.57) | .170 (4.3) | .218 (5.5) | |
| 3236 | .031 (.79) | .375 (9.5) | .062 (1.57) | .170 (4.3) | .215 (5.5) | |
| 3237 | .031 (.79) | .500 (12.7) | .062 (1.57) | .170 (4.3) | .240 (6.1) | |
| 4702 | .031 (.79) | .375 (9.5) | .062 (1.57) | .194 (4.9) | .308 (7.8) | |
| 3238 | .031 (.79) | .375 (9.5) | .062 (1.57) | .194 (4.9) | .240 (6.1) | #10 |
| 3239 | .031 (.79) | .500 (12.7) | .062 (1.57) | .196 (5.0) | .240 (6.1) | |
| 4711 | .031 (.79) | .500 (12.7) | .062 (1.57) | .253 (6.4) | .308 (7.8) | .250-20 |
| 3240 | .031 (.79) | .625 (15.9) | .062 (1.57) | .265 (6.7) | .359 (9.1) | |
| 3069 | .031 (.79) | .625 (15.9) | .062 (1.57) | .385 (9.8) | .498 (12.6) | .375-24 |
| 3241 | .031 (.79) | .750 (19.1) | .062 (1.57) | .385 (9.8) | .498 (12.6) | |



NYLON SHOULDER WASHER/BUSHINGS

MATERIAL: Nylon 6/6 per ASTM D4066

| CAT. NO. | L | O.D. | B | I.D. | S.D. | SCREW SIZE |
|----------|-------------|-------------|-------------|------------|------------|------------|
| 7680 | .025 (.64) | .260 (6.6) | .030 (.76) | .095 (2.4) | .154 (3.9) | #2 |
| 3051 | .125 (3.2) | .181 (4.6) | .047 (1.2) | .090 (2.3) | .120 (3.1) | |
| 3101 | .187 (4.8) | .181 (4.6) | .047 (1.2) | .090 (2.3) | .120 (3.1) | |
| 3052 | .250 (6.4) | .181 (4.6) | .047 (1.2) | .090 (2.3) | .120 (3.1) | |
| 3049 | .031 (.79) | .218 (5.5) | .040 (1.0) | .115 (2.9) | .135 (3.4) | #4 |
| 7681 | .047 (1.2) | .250 (6.4) | .032 (.81) | .115 (2.9) | .185 (4.7) | |
| 3053 | .093 (2.4) | .235 (6.0) | .047 (1.2) | .115 (2.9) | .145 (3.7) | |
| 3102 | .125 (3.2) | .235 (6.0) | .047 (1.2) | .115 (2.9) | .145 (3.7) | |
| 3103 | .187 (4.7) | .235 (6.0) | .047 (1.2) | .115 (2.9) | .145 (3.7) | |
| 340 | .250 (6.4) | .235 (6.0) | .047 (1.2) | .115 (2.9) | .145 (3.7) | |
| 7682 | .032 (.81) | .385 (9.8) | .062 (1.57) | .145 (3.7) | .240 (6.1) | #6 |
| 7683 | .032 (.81) | .250 (6.4) | .062 (1.57) | .140 (3.6) | .187 (4.7) | |
| 7684 | .032 (.81) | .312 (7.9) | .062 (1.57) | .140 (3.6) | .187 (4.7) | |
| 3054 | .125 (3.2) | .290 (7.4) | .047 (1.19) | .140 (3.6) | .170 (4.3) | |
| 3104 | .187 (4.7) | .290 (7.4) | .047 (1.19) | .140 (3.6) | .170 (4.3) | |
| 341 | .250 (6.4) | .290 (7.4) | .047 (1.19) | .140 (3.6) | .170 (4.3) | |
| 3055 | .500 (12.7) | .290 (7.4) | .047 (1.19) | .140 (3.6) | .170 (4.3) | #8 |
| 7685 | .032 (.81) | .375 (9.5) | .032 (.81) | .171 (4.3) | .250 (6.4) | |
| 3056 | .140 (3.6) | .344 (8.7) | .062 (1.57) | .171 (4.3) | .205 (5.2) | |
| 3105 | .250 (6.4) | .344 (8.7) | .062 (1.57) | .171 (4.3) | .205 (5.2) | |
| 342 | .375 (9.5) | .344 (8.7) | .062 (1.57) | .171 (4.3) | .205 (5.2) | |
| 3106 | .500 (12.7) | .344 (8.7) | .062 (1.57) | .171 (4.3) | .205 (5.2) | |
| 7686 | .032 (.81) | .375 (9.5) | .062 (1.57) | .196 (5.0) | .308 (7.8) | #10 |
| 3107 | .093 (2.36) | .438 (11.1) | .062 (1.57) | .200 (5.1) | .260 (6.6) | |
| 3108 | .250 (6.4) | .399 (10.1) | .062 (1.57) | .200 (5.1) | .260 (6.6) | |
| 3057 | .500 (12.7) | .399 (10.1) | .062 (1.57) | .200 (5.1) | .260 (6.6) | |
| 3058 | .750 (19.1) | .399 (10.1) | .062 (1.57) | .200 (5.1) | .260 (6.6) | |
| 7687 | .032 (.81) | .437 (11.1) | .032 (.81) | .253 (6.4) | .310 (7.9) | |
| 7688 | .078 (1.98) | .492 (12.7) | .032 (.81) | .260 (6.7) | .312 (7.9) | |
| 3059 | .187 (4.7) | .513 (13.0) | .062 (1.57) | .260 (6.7) | .312 (7.9) | |
| 3109 | .250 (6.4) | .513 (13.0) | .062 (1.57) | .260 (6.7) | .312 (7.9) | |
| 3110 | .375 (9.5) | .513 (13.0) | .062 (1.57) | .260 (6.7) | .312 (7.9) | |
| 3060 | .500 (12.7) | .513 (13.0) | .062 (1.57) | .260 (6.7) | .312 (7.9) | |



HEX MACHINE NUTS

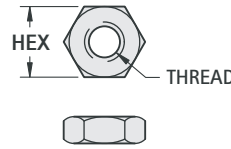


MATERIAL: Nylon 6/6 (RoHS Compliant)

Steel, Zinc Plate (Non-RoHS Compliant)

Note: RoHS Compliant finishes available on special order

| STEEL CAT. NO. | NYLON CAT. NO. | HEX | THREAD |
|----------------|----------------|-------------|---------|
| 4694 | — | .187 (4.7) | 4-40 |
| 9600 | 9605 | .250 (6.4) | |
| 4701 | — | .250 (6.4) | 6-32 |
| 9602 | 9606 | .312 (7.9) | |
| 9603 | — | .250 (6.4) | 8-32 |
| 9604 | 9607 | .312 (7.9) | |
| 4705 | 9608 | .375 (9.5) | 10-32 |
| 4713 | — | .430 (10.9) | .250-28 |
| 4716 | — | .500 (12.7) | .312-24 |



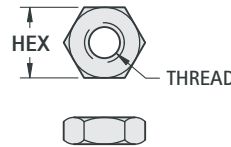
METRIC MACHINE NUTS



MATERIAL: Nylon 6/6 UL Rated 94V-2

Steel, Nickel Plate

| STEEL CAT. NO. | NYLON CAT. NO. | HEX | THREAD |
|----------------|----------------|---------|--------|
| 4707 | 4687 | 5.00 mm | M2.5 |
| 4708 | 4688 | 5.50 mm | M3 |
| 4709 | 4689 | 7.00 mm | M4 |

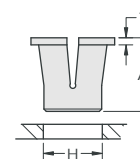


BLIND CAPTIVE NUTS - PRESS FIT

MOUNT CHASSIS, PANELS, HEAT SINKS, SOCKETS

- Easy Assembly • Dampens Vibration
- Eliminates Insulating Washer • Hi-Dielectric Strength

A unique reusable fastener made of NYLON which contains a threaded brass nut. Finger pressure or light tap seals it in a pre-drilled hole. The nut is drawn up causing a Nylon bulge behind the workpiece. Screw may be removed or replaced.



Shown Installed (Screw not supplied)

MATERIAL: Molded Nylon with Brass threaded insert

| CAT. NO. | THREAD | H HOLE SIZE REQ'D. | IDEAL SHEET THICKNESS | A | T |
|----------|--------|--------------------|-----------------------|-------------|------------|
| 4341 | 4-40 | .250 (6.4) | .047 (1.2) | .312 (7.9) | .030 (.76) |
| 4342 | 6-32 | .312 (7.9) | .078 (1.9) | .375 (9.5) | .030 (.76) |
| 4343 | 8-32 | .406 (10.3) | .093 (2.4) | .500 (12.7) | .030 (.76) |