

# New Jersey Semi-Conductor Products, Inc.

20 STERN AVE.  
 SPRINGFIELD, NEW JERSEY 07081  
 U.S.A.

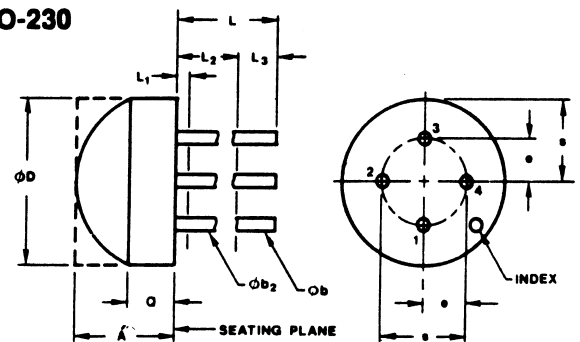
TELEPHONE: (973) 376-2922  
 (212) 227-6005  
 FAX: (973) 376-8960

2N4917  
 SI PNP LP HF BJT

Description: Si PNP LP HF BJT

Manufacturer.....	many
Mil/High-Rel? (Y/N).....	
Vbr CEO.....	30
Trans. Freq (Hz) Min.....	450M
hfe.....	
@VCE (test) (V).....	
@Ic (A).....	
Ic Max. (A).....	200m
C(ob) (F).....	4.5p
Icbo Max. @Vcb Max. (A).....	25nW
t(on) Delay (S).....	35n
Tr Max. (s).....	35n
t(stor) Max. (S).....	150n
t(f) Max. (S).....	75n
Max. PD (W).....	200m
Derate (Amb) (W/xC).....	2.0m
Vbr CBO.....	30
Oper. Temp (xC) Max.....	150u
@ Temp (derating) test xC...	
Oper. Temp (xC) Min.....	
Pkg Style.....	TO-230 var
Surface Mounted (Y/N).....	N
Pinout Equivalence Number.....	3-12

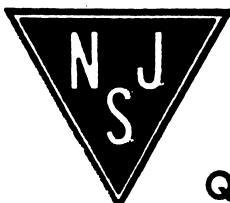
## TO-230



VARIATIONS (All Dimensions shown in millimeters)

SYMBOL	AA			AB		
	MIN.	MAX.	NOTE	MIN.	MAX.	NOTE
A	3.1	6.0	7	3.1	6.0	7
oa	2.42	2.66	4	4.83	5.33	4
ob	4.07	5.33		4.07	5.33	
ob2	4.07	4.82	3	4.07	4.82	3
oD	4.88	5.63	7	7.75	8.25	7
e	1.15	1.39	4	2.29	2.79	4
L	12.70		3	12.70		3
L1		1.27	3		1.27	3
L2	5.10		3	5.10		3
L3	6.35		3	6.35		3
Q	1.53			1.53		
s	2.29	2.92		3.69	4.19	
NOTE	1, 2, 5, 6, 8, 9			1, 2, 5, 6, 8, 9		

- NOTES:
1. Refer to applicable symbol list.
  2. Dimensioning & tolerancing per ANSI Y14.5-1973.
  3. ob<sub>2</sub> applies to zone L<sub>1</sub>. ob applies to zone L<sub>2</sub>. Lead diameter is uncontrolled in zone L<sub>1</sub> and beyond zone L<sub>1</sub> minimum.
  4. e and oa apply to zone (L<sub>1</sub> and L<sub>2</sub>) when unit installed. Leads to be within .13 radius true position at gauge plane at maximum material condition.
  5. Maximum quantity of leads 4.
  6. Maximum quantity of allowable missing leads 1.
  7. Package contour option within dimensions specified.
  8. Visual or mechanical index optional if one lead is omitted.
  9. Controlling dimension: inch.



Quality Semi-Conductors