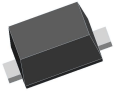




# WILLAS



%GG( \$\$



GK  $\neq$  H7 <  $\neq$  B; '8 ]cXYg

SOD-523

• Applications

High speed switching

• Features

- 1) Extremely small surface mounting type.
- 2) High Speed.
- 3) High reliability.

• Construction

Silicon epitaxial planar

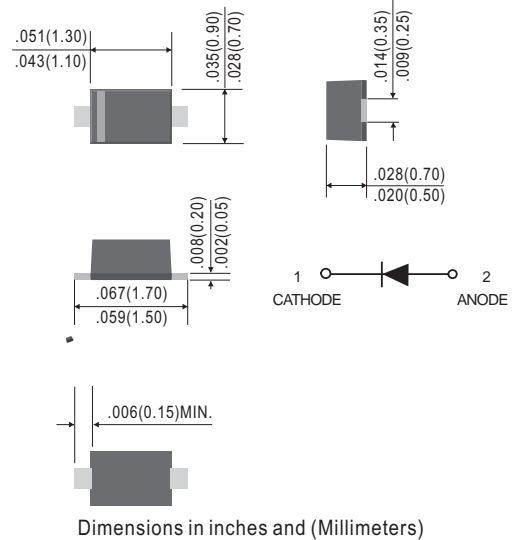
ORDRING INFORMATION

Device	Marking	Shipping
1SS400-TG	A	3000/Tape&Reel

Pb-Free package is available

RoHS product for packing code suffix "G"

Halogen free product for packing code suffix "H"



Maximum Ratings and Electrical Characteristics, Single Diode @T<sub>A</sub>=25

Parameter	Symbol	Limits	Unit
Peak reverse voltage	V <sub>RM</sub>	90	V
DC reverse voltage	V <sub>R</sub>	80	V
Peak forward current	I <sub>FM</sub>	225	mA
Mean rectifying current	I <sub>O</sub>	100	mA
Surge current (1s)	I <sub>surge</sub>	500	mA
Junction temperature	T <sub>j</sub>	125	
Storage temperature	T <sub>stg</sub>	-55~+125	

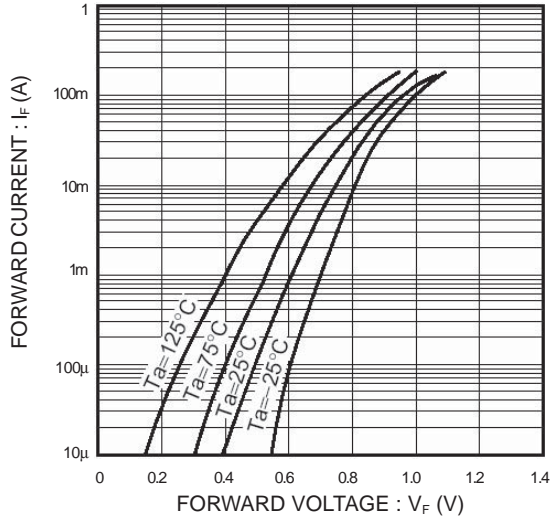
Electrical Ratings @T<sub>A</sub>=25

Parameter	Symbol	Min.	Typ.	Max.	Unit	Conditions
Forward voltage	V <sub>F</sub>			1.2	V	I <sub>F</sub> =100mA
Reverse current	I <sub>R</sub>			0.1	μA	V <sub>R</sub> =80V
Capacitance between terminals	C <sub>T</sub>			3.0	pF	V <sub>R</sub> =0.5V, f=1MHZ
Reverse recovery time	t <sub>rr</sub>			4	ns	V <sub>R</sub> =6V, I <sub>F</sub> =10mA, R <sub>L</sub> =100

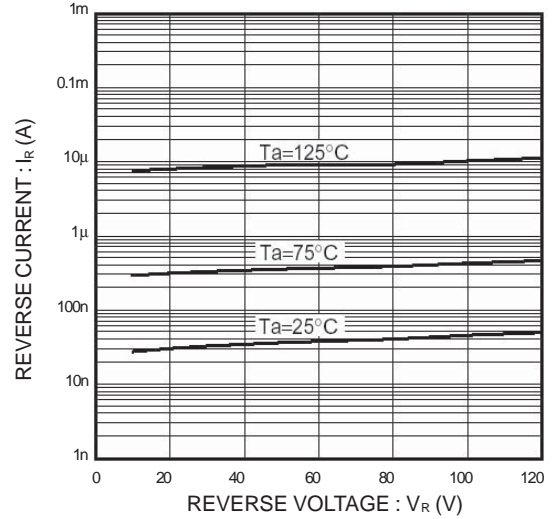


## ELECTRICAL CHARACTERISTIC CURVES

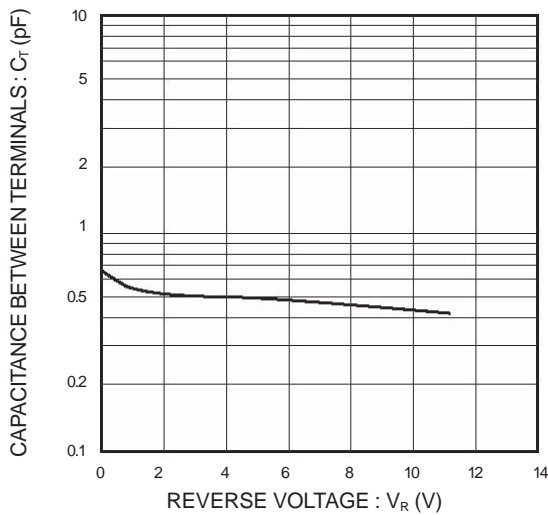
( $T_a = 25^\circ\text{C}$ )



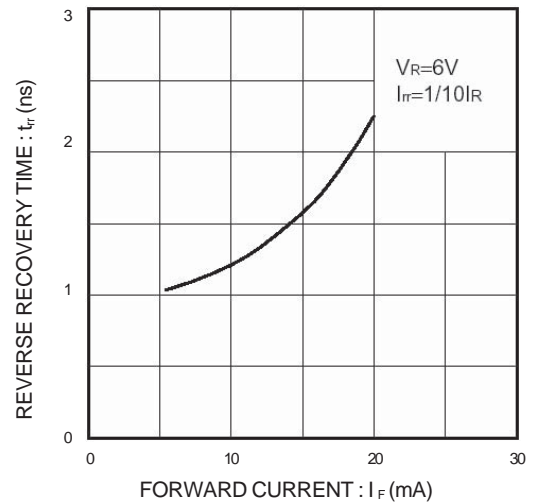
**Fig.1 Forward characteristics**



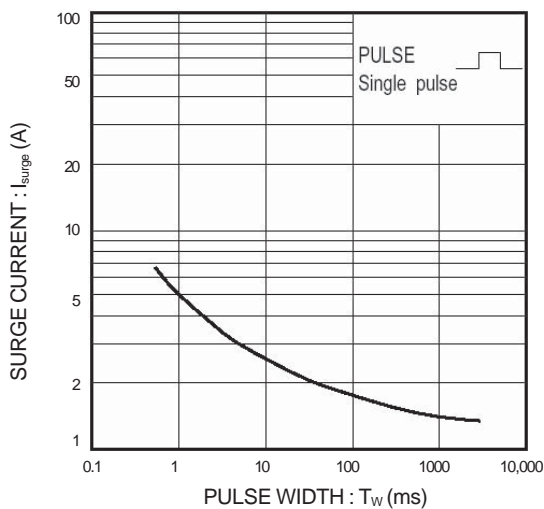
**Fig.2 Reverse characteristics**



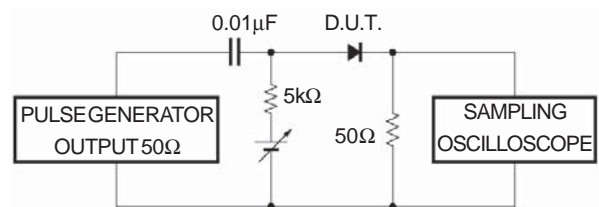
**Fig.3 Capacitance between terminals**



**Fig.4 Reverse recovery time characteristics**



**Fig.5 Surge current characteristics**



**Fig.6 Reverse recovery time ( $t_{rr}$ ) measurement circuit**