



淄博圣诺

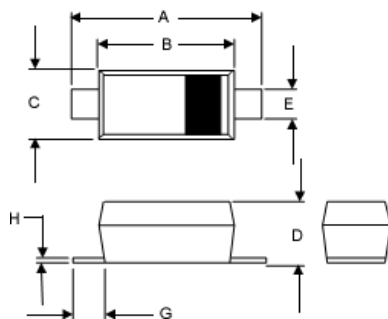
## ZENER DIODES

TYPE No.		Page
1.	PL3V6C to PL91C ..... SOD-123 ... 1W .....	3
2.	1N4728 to 1N4764 ..... DO-41 ... 1W .....	4
3.	SZ103D to SZ10E0 ..... SMA ... 1W .....	4
4.	1SMA4728A to 1SMA4764A..... SMA ... 1W .....	6
5.	1N5913 to 1N5956 ..... DO-41 ... 1.5W .....	7
6.	2EZ2.7D5 to 2EZ330D5..... DO-41 ... 2W .....	8
7.	SZ452H to SZ45E3 ..... SMA ... 2W .....	8
8.	3EZ3.9D5 to 3EZ200D5 ..... DO-41 ... 3W .....	10
9.	SZ553J to SZ55D0 ..... SMA ... 3W .....	10
10.	1SMB5913A to 1SMB5956A..... SMB ... 3W .....	12
11.	1N5333A to 1N5388A..... DO-15 ... 5W .....	13
12.	SZ603D to SZ60D0..... SMB ... 5W .....	13
13.	SMB5333A to SMB5388A ..... SMB ... 5W .....	15

## Zener Diodes 1W

## PL3V6C to PL91C ,SOD-123

Type No.	Device Marking Code	Nominal Zener Voltage(1)		Test Current	Differential Resistance		Temperature Coefficient		Maximum Reverse Leakage Current	
		VZ@IZT			rdif@IZT	VZ @IZ		IR	VR	
		(V)	(V)	(mA)		(%)	(%)			( $\mu$ A)
PL3V6C	W5	3.4	3.8	100	4.0	8.0	-0.14	-0.04	100	1.0
PL3V9C	W6	3.7	4.1	100	4.0	8.0	-0.14	-0.04	50	1.0
PL4V3C	W7	4.0	4.6	100	4.0	7.0	-0.12	-0.02	25	1.0
PL4V7C	W8	4.4	5.0	100	3.0	7.0	-0.1	0	10	1.0
PL5V1C	W9	4.8	5.4	100	3.0	6.0	-0.08	0.2	5.0	1.0
PL5V6C	WA	5.2	6.0	100	2.0	4.0	-0.04	0.04	10	2.0
PL6V2C	WB	5.8	6.6	100	2.0	3.0	-0.01	0.06	5.0	2.0
PL6V8C	WC	6.4	7.2	100	1.0	3.0	0	0.07	10	3.0
PL7V5C	WD	7.0	7.9	100	1.0	2.0	0	0.07	50	3.0
PL8V2C	WE	7.7	8.7	100	1.0	2.0	0.03	0.08	10	3.0
PL9V1C	WF	8.5	9.6	50	2.0	4.0	0.03	0.08	10	3.0
PL10C	WG	9.4	10.6	50	2.0	4.0	0.05	0.09	7.0	7.5
PL11C	WH	10.4	11.6	50	4.0	7.0	0.05	0.1	4.0	8.2
PL12C	WI	11.4	12.7	50	4.0	7.0	0.05	0.1	3.0	9
PL13C	WK	12.4	14.1	50	5.0	10	0.05	0.1	2.0	10
PL15C	WL	13.8	15.6	50	5.0	10	0.05	0.1	1.0	11
PL16C	WM	15.3	17.1	25	6.0	15	0.06	0.11	1.0	12
PL18C	WN	16.8	19.1	25	6.0	15	0.06	0.11	1.0	13
PL20C	WO	18.8	21.2	25	6.0	15	0.06	0.11	1.0	15
PL22C	WP	20.8	23.3	25	6.0	15	0.06	0.11	1.0	16
PL24C	WR	22.8	25.6	25	7.0	15	0.06	0.11	1.0	18
PL27C	WS	25.1	28.9	25	7.0	15	0.06	0.11	1.0	20
PL30C	WT	28	32	25	8.0	15	0.06	0.11	1.0	22
PL33C	WU	31	35	25	8.0	15	0.06	0.11	1.0	24
PL36C	WV	34	38	10	21	40	0.06	0.11	1.0	27
PL39C	WX	37	41	10	21	40	0.06	0.11	1.0	30
PL43C	WY	40	46	10	24	45	0.07	0.12	1.0	33
PL47C	WZ	44	50	10	24	45	0.07	0.12	1.0	36
PL51C	X1	48	54	10	25	60	0.07	0.12	1.0	39
PL56C	X2	52	60	10	25	60	0.07	0.12	1.0	43
PL62C	X3	58	66	10	25	80	0.08	0.13	1.0	47
PL68C	X4	64	72	10	25	80	0.08	0.13	1.0	51
PL75C	X5	70	79	10	30	100	0.08	0.13	1.0	56
PL82C	X6	77	87	10	30	100	0.08	0.13	1.0	62
PL91C	X7	85	96	5.0	60	200	0.09	0.13	1.0	68



SOD-123

DIM	DIMENSIONS				NOTE
	INCHES		MM		
	MIN	MAX	MIN	MAX	
A	.140	.152	3.55	3.85	
B	.100	.112	2.55	2.85	
C	.055	.071	1.40	1.80	
D	.037	.053	0.95	1.35	
E	.020	.039	0.50	1.00	
G	.010	----	0.25	----	
H	----	.008	----	.20	

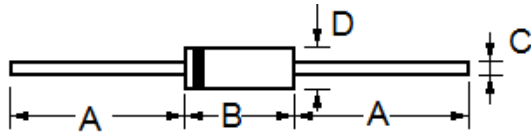


淄博圣诺

Zener Diodes 1W

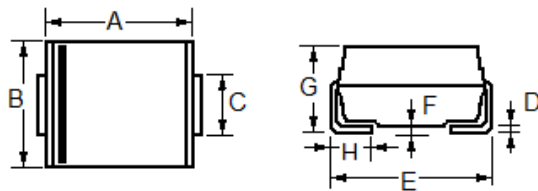
1N4728/SZ103D to 1N4764/SZ10E0, DO-41/SMA

Type No.		Nominal Zener Voltage		Maximum Zener Impedance			Maximum Reverse Leakage Current		Maximum DC Zener Current
		VZ@IZT (V)	IZT (mA)	ZZT@IZT ( )	ZZK@IZK ( )	IZK (mA)	IR @ VR (uA) (V)		IZM (mA)
Axial Lead	SMD								
1N4728	SZ103D	3.3	76.0	10	400	1.0	100	1.0	276
1N4729	SZ103G	3.6	69.0	10	400	1.0	100	1.0	252
1N4730	SZ103J	3.9	64.0	9.0	400	1.0	50	1.0	234
1N4731	SZ104D	4.3	58.0	9.0	400	1.0	10	1.0	217
1N4732	SZ104H	4.7	53.0	8.0	500	1.0	10	1.0	193
1N4733	SZ105B	5.1	49.0	7.0	550	1.0	10	1.0	178
1N4734	SZ105G	5.6	45.0	5.0	600	1.0	10	2.0	162
1N4735	SZ106C	6.2	41.0	2.0	700	1.0	10	3.0	146
1N4736	SZ1061	6.8	37.0	3.5	700	1.0	10	4.0	133
1N4737	SZ107F	7.5	34.0	4.0	700	0.5	10	5.0	121
1N4738	SZ108C	8.2	31.0	4.5	700	0.5	10	6.0	110
1N4739	SZ109B	9.1	28.0	5.0	700	0.5	10	7.0	100
1N4740	SZ1010	10	25.0	7.0	700	0.25	10	7.6	91
1N4741	SZ1011	11	23.0	8.0	700	0.25	5.0	8.4	83
1N4742	SZ1012	12	21.0	9.0	700	0.25	5.0	9.1	76
1N4743	SZ1013	13	19.0	10	700	0.25	5.0	9.9	69
1N4744	SZ1015	15	17.0	14	700	0.25	5.0	11.4	61
1N4745	SZ1016	16	15.5	16	700	0.25	5.0	12.2	57
1N4746	SZ1018	18	14.0	20	750	0.25	5.0	13.7	50
1N4747	SZ1020	20	12.5	22	750	0.25	5.0	15.2	45
1N4748	SZ1022	22	11.5	23	750	0.25	5.0	16.7	41
1N4749	SZ1024	24	10.5	25	750	0.25	5.0	18.2	38
1N4750	SZ1027	27	9.5	35	750	0.25	5.0	20.6	34
1N4751	SZ1030	30	8.5	40	1000	0.25	5.0	22.8	30
1N4752	SZ1033	33	7.5	45	1000	0.25	5.0	25.1	27
1N4753	SZ1036	36	7.0	50	1000	0.25	5.0	27.4	25
1N4754	SZ1039	39	6.5	60	1000	0.25	5.0	29.7	23
1N4755	SZ1043	43	6.0	70	1500	0.25	5.0	32.7	22
1N4756	SZ1047	47	5.5	80	1500	0.25	5.0	35.8	19
1N4757	SZ1051	51	5.0	95	1500	0.25	5.0	38.8	18
1N4758	SZ1056	56	4.5	110	2000	0.25	5.0	42.6	16
1N4759	SZ1062	62	4.0	125	2000	0.25	5.0	47.1	14
1N4760	SZ1068	68	3.7	150	2000	0.25	5.0	51.7	13
1N4761	SZ1075	75	3.3	175	2000	0.25	5.0	56.0	12
1N4762	SZ1082	82	3.0	200	3000	0.25	5.0	62.2	11
1N4763	SZ1091	91	2.8	250	3000	0.25	5.0	69.2	10
1N4764	SZ10B0	100	2.5	350	3000	0.25	5.0	76.0	9.0
Z1110	SZ10B1	110	2.3	450	4000	0.25	5.0	83.6	8.6
Z1120	SZ10B2	120	2.0	550	4500	0.25	5.0	91.2	7.8
Z1130	SZ10B3	130	1.9	700	5000	0.25	5.0	98.8	7.0
Z1150	SZ10B5	150	1.7	1000	6000	0.25	5.0	114.0	6.4
Z1160	SZ10B6	160	1.6	1100	6500	0.25	5.0	121.6	5.8
Z1180	SZ10B8	180	1.4	1200	7000	0.25	5.0	136.8	5.2
Z1200	SZ10D0	200	1.2	1900	9990	0.25	5.0	152.0	4.7
Z1220	SZ10D2	220	1.0	1600	8000	0.25	5.0	167.2	4.0
Z1240	SZ10D4	240	0.93	1800	8500	0.25	5.0	182.4	3.8
Z1250	SZ10D5	250	0.9	2000	9000	0.25	5.0	190	3.6
Z1270	SZ10D7	270	0.82	2100	9000	0.25	5.0	205	3.3
Z1300	SZ10E0	300	0.75	2300	9500	0.25	5.0	228	3.0



DO-41

Dim	Millimeters		Inches	
	Min	Max	Min	Max
A	25.4	---	1.000	---
B	4.20	5.20	0.165	0.205
C	0.70	0.90	0.028	0.034
D	2.00	2.70	0.080	0.107



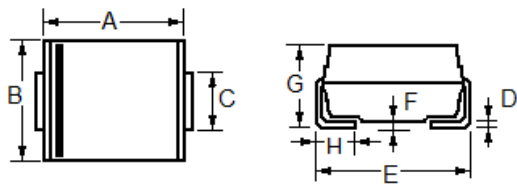
SMA

Dim	Millimeters		Inches	
	Min	Max	Min	Max
A	3.99	4.50	0.157	0.177
B	2.54	2.79	0.100	0.110
C	1.25	1.65	0.049	0.065
D	0.152	0.305	0.006	0.012
E	4.93	5.28	0.194	0.208
F	----	0.203	----	0.008
G	1.98	2.29	0.078	0.090
H	0.76	1.52	0.030	0.060

## Zener Diodes 1W

## 1SMA4728A to 1SMA4764, SMA

Type No.	Nominal Zener Voltage	Test Current	Maximum Zener Impedance			Maximum Reverse Leakage Current		Maximum DC Zener Current	Maximum Surge Current
	VZ@IZT (V)	IZT (mA)	ZZT@IZT ( $\Omega$ )	ZZK@IZK ( $\Omega$ )	IZK (mA)	IR @ VR ( $\mu$ A) (mA)		IZM (mA)	IRM(2) (mApk)
1SMA4728A	3.3	76.0	10	400	1.0	100	1.0	276	1380
1SMA4729A	3.6	69.0	10	400	1.0	100	1.0	252	1260
1SMA4730A	3.9	58.0	9.0	400	1.0	50	1.0	234	1190
1SMA4731A	4.3	58.0	9.0	400	1.0	10	1.0	217	1070
1SMA4732A	4.7	53.0	8.0	500	1.0	10	1.0	193	970
1SMA4733A	5.1	49.0	7.0	500	1.0	10	1.0	178	890
1SMA4734A	5.6	45.0	5.0	500	1.0	10	2.0	162	810
1SMA4735A	6.2	41.0	2.0	700	1.0	10	3.0	146	730
1SMA4736A	6.8	37.0	3.5	700	1.0	50	4.0	133	660
1SMA4737A	7.5	34.0	4.0	700	0.5	50	5.0	121	605
1SMA4738A	8.2	31.0	4.5	700	0.5	50	6.0	110	550
1SMA4739A	9.1	28.0	5.0	700	0.5	50	7.0	100	500
1SMA4740A	10	25.0	7.0	700	0.25	50	7.6	91	454
1SMA4741A	11	23.0	8.0	700	0.25	50	8.4	83	414
1SMA4742A	12	21.0	9.0	700	0.25	5.0	9.1	76	380
1SMA4743A	13	19.0	10	700	0.25	5.0	9.9	69	144
1SMA4744A	15	17.0	14	700	0.25	5.0	11.4	61	305
1SMA4745A	16	15.5	16	700	0.25	5.0	12.2	57	285
1SMA4746A	18	14.0	20	750	0.25	5.0	13.7	50	250
1SMA4747A	20	12.5	22	750	0.25	5.0	15.2	45	225
1SMA4748A	22	11.5	23	750	0.25	5.0	16.7	41	205
1SMA4749A	24	10.5	25	750	0.25	5.0	18.2	38	190
1SMA4750A	27	9.5	35	750	0.25	5.0	20.6	34	170
1SMA4751A	30	8.5	40	1000	0.25	5.0	22.8	30	150
1SMA4752A	33	7.5	45	1000	0.25	5.0	25.1	27	135
1SMA4753A	36	7.0	50	1000	0.25	5.0	27.4	25	125
1SMA4754A	39	6.5	60	1000	0.25	5.0	29.7	23	115
1SMA4755A	43	6.0	70	1500	0.25	5.0	32.7	22	110
1SMA4756A	47	5.5	80	1500	0.25	5.0	35.8	19	95
1SMA4757A	51	5.0	95	1500	0.25	5.0	38.8	18	90
1SMA4758A	56	4.5	110	2000	0.25	5.0	42.6	16	80
1SMA4759A	62	4.0	125	2000	0.25	5.0	47.1	14	70
1SMA4760A	68	3.7	150	2000	0.25	5.0	51.7	13	65
1SMA4761A	75	3.3	175	2000	0.25	5.0	56.0	12	60
1SMA4762A	82	3.0	200	3000	0.25	5.0	62.2	11	55
1SMA4763A	91	2.8	2.5	3000	0.25	5.0	69.2	10	50
1SMA4764A	100	2.5	350	3000	0.25	5.0	76.0	9.0	45



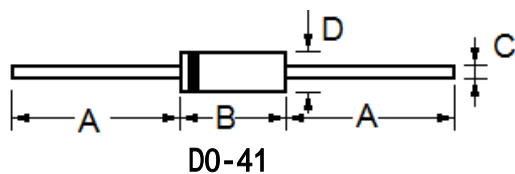
SMA

Dim	Millimeters		Inches	
	Min	Max	Min	Max
A	3.99	4.50	0.157	0.177
B	2.54	2.79	0.100	0.110
C	1.25	1.65	0.049	0.065
D	0.152	0.305	0.006	0.012
E	4.93	5.28	0.194	0.208
F	----	0.203	----	0.008
G	1.98	2.29	0.078	0.090
H	0.76	1.52	0.030	0.060

## Zener Diodes 1.5W

## 1N5913 to 1N5956, DO-41

Type No.	Nominal Zener Voltage		Maximum Zener Impedance			Maximum Reverse Leakage Current		Maximum DC Zener Current
	VZ@IZT (V)	IZT (mA)	ZZT@IZT ( $\Omega$ )	ZZK@IZK ( $\Omega$ )	IZK (mA)	IR @ VR ( $\mu$ A) (V)		IZM (mA)
1N5913	3.3	113.6	10	500	1.0	100	1.0	454
1N5914	3.6	104.2	9.0	500	1.0	75	1.0	416
1N5915	3.9	96.1	7.5	500	1.0	25	1.0	384
1N5916	4.3	87.2	6.0	500	1.0	5.0	1.0	348
1N5917	4.7	79.8	5.0	500	1.0	5.0	1.5	319
1N5918	5.1	73.5	4.0	350	1.0	5.0	2.0	294
1N5919	5.6	66.9	2.0	250	1.0	5.0	3.0	267
1N5920	6.2	60.5	2.0	200	1.0	5.0	4.0	241
1N5921	6.8	55.1	2.5	200	1.0	5.0	5.2	220
1N5922	7.5	50.0	3.0	400	0.5	5.0	6.0	200
1N5923	8.2	45.7	3.5	400	0.5	5.0	6.5	182
1N5924	9.1	41.2	4.0	500	0.5	5.0	7.0	164
1N5925	10	37.5	4.5	500	0.25	5.0	8.0	150
1N5926	11	34.1	5.5	550	0.25	1.0	8.4	136
1N5927	12	31.2	6.5	550	0.25	1.0	9.1	125
1N5928	13	28.8	7.0	550	0.25	1.0	9.9	115
1N5929	15	25.0	9.0	600	0.25	1.0	11.4	100
1N5930	16	23.4	10	600	0.25	1.0	12.2	93
1N5931	18	20.8	12	650	0.25	1.0	13.7	83
1N5932	20	18.7	14	650	0.25	1.0	15.2	75
1N5933	22	17.0	17.5	650	0.25	1.0	16.7	68
1N5934	24	15.6	19	700	0.25	1.0	18.2	62
1N5935	27	13.9	23	700	0.25	1.0	20.6	55
1N5936	30	12.5	28	750	0.25	1.0	22.8	50
1N5937	33	11.4	33	800	0.25	1.0	25.1	45
1N5938	36	10.4	38	850	0.25	1.0	27.4	41
1N5939	39	9.6	45	900	0.25	1.0	29.7	38
1N5940	43	8.7	53	950	0.25	1.0	32.7	34
1N5941	47	8.0	67	1000	0.25	1.0	35.8	31
1N5942	51	7.3	70	1100	0.25	1.0	38.8	29
1N5943	56	6.7	86	1300	0.25	1.0	42.6	26
1N5944	62	6.0	100	1500	0.25	1.0	47.1	24
1N5945	68	5.5	120	1700	0.25	1.0	51.2	22
1N5946	75	5.0	140	2000	0.25	1.0	56	20
1N5947	82	4.6	160	2500	0.25	1.0	62.2	18
1N5948	91	4.1	200	3000	0.25	1.0	69.2	16
1N5949	100	3.7	250	3100	0.25	1.0	76	15
1N5950	110	3.4	300	4000	0.25	1.0	83.6	13
1N5951	120	3.1	380	4500	0.25	1.0	91.2	12
1N5952	130	2.9	450	5000	0.25	1.0	98.8	11
1N5953	150	2.5	600	6000	0.25	1.0	114	10
1N5954	160	2.3	700	6500	0.25	1.0	121.6	9.0
1N5955	180	2.1	900	7000	0.25	1.0	136.8	8.0
1N5956	200	1.9	1200	8000	0.25	1.0	152	7.0

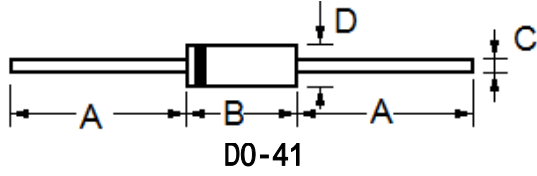


Dim	Millimeters		Inches	
	Min	Max	Min	Max
A	25.4	---	1.000	---
B	4.20	5.20	0.165	0.205
C	0.70	0.90	0.028	0.034
D	2.00	2.70	0.080	0.107

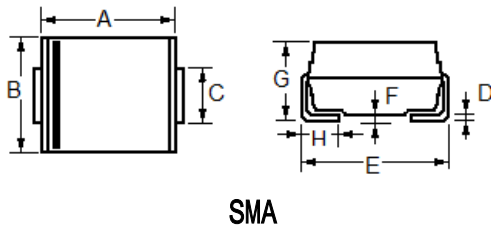
## Zener Diodes 2W 2EZ2.7D5/SZ452H to 2EZ330D5/SZ45E3, DO-41/SMA

Type No.		Nominal Zener Voltage		Maximum Zener Impedance			Maximum Reverse Leakage Current		Maximum DC Zener Current
		VZ@IZT (V)	IZT (mA)	ZZT@IZT ( $\Omega$ )	ZZK@IZK ( $\Omega$ )	IZK (mA)	IR@ VR ( $\mu$ A)	VR (V)	IZM (mA)
Axial Lead	SMD								
2EZ2.7D5	SZ452H	2.7	80	10	400	1.0	100	1.0	660
2EZ3.0D5	SZ453A	3.0	160	8.0	400	1.0	100	1.0	600
2EZ3.3D5	SZ453D	3.3	145	8.0	400	1.0	80	1.0	545
2EZ3.6D5	SZ453G	3.6	139	5.0	400	1.0	80	1.0	504
2EZ3.9D5	SZ453J	3.9	128	5.0	400	1.0	30	1.0	468
2EZ4.3D5	SZ454D	4.3	116	4.5	400	1.0	20	1.0	434
2EZ4.7D5	SZ454H	4.7	106	4.5	550	1.0	5.0	1.0	386
2EZ5.1D5	SZ455B	5.1	98.0	3.5	600	1.0	5.0	1.0	356
2EZ5.6D5	SZ455G	5.6	89.5	2.5	500	1.0	5.0	2.0	324
2EZ6.2D5	SZ456C	6.2	80.5	1.5	700	1.0	5.0	3.0	292
2EZ6.8D5	SZ456I	6.8	73.5	2.0	700	1.0	50	4.0	266
2EZ7.5D5	SZ457F	7.5	66.5	2.0	700	0.5	50	5.0	242
2EZ8.2D5	SZ458C	8.2	61.0	2.3	700	0.5	50	6.0	220
2EZ9.1D5	SZ459B	9.1	55.0	2.5	700	0.5	50	7.0	200
2EZ10D5	SZ4510	10	50.0	3.5	700	0.25	50	7.6	182
2EZ11D5	SZ4511	11	45.5	4.0	700	0.25	50	8.4	166
2EZ12D5	SZ4512	12	41.5	4.5	700	0.25	50	9.1	152
2EZ13D5	SZ4513	13	38.5	5.0	700	0.25	0.5	9.9	138
2EZ14D5	SZ4514	14	35.7	5.5	700	0.25	0.5	10.6	130
2EZ15D5	SZ4515	15	33.4	7.0	700	0.25	0.5	11.4	122
2EZ16D5	SZ4516	16	31.2	8.0	700	0.25	0.5	12.2	114
2EZ17D5	SZ4517	17	29.4	9.0	750	0.25	0.5	13.0	107
2EZ18D5	SZ4518	18	27.8	10	750	0.25	0.5	13.7	100
2EZ19D5	SZ4519	19	26.3	11	750	0.25	0.5	14.4	95
2EZ20D5	SZ4520	20	25.0	11	750	0.25	0.5	15.2	90
2EZ22D5	SZ4522	22	22.8	12	750	0.25	0.5	16.7	82
2EZ24D5	SZ4524	24	20.8	13	750	0.25	0.5	18.2	76
2EZ27D5	SZ4527	27	18.5	18	750	0.25	0.5	20.6	68
2EZ30D5	SZ4530	30	16.6	20	1000	0.25	0.5	22.5	60
2EZ33D5	SZ4533	33	15.1	23	1000	0.25	0.5	25.1	55
2EZ36D5	SZ4536	36	13.9	25	1000	0.25	0.5	27.4	50
2EZ39D5	SZ4539	39	12.8	30	1000	0.25	0.5	29.7	47
2EZ43D5	SZ4543	43	11.6	35	1500	0.25	0.5	32.7	43
2EZ47D5	SZ4547	47	10.6	40	1500	0.25	0.5	35.8	39
2EZ51D5	SZ4551	51	9.8	48	1500	0.25	0.5	38.8	36
2EZ56D5	SZ4556	56	9.0	55	2000	0.25	0.5	42.6	32
2EZ62D5	SZ4562	62	8.1	60	2000	0.25	0.5	47.1	29
2EZ68D5	SZ4568	68	7.4	75	2000	0.25	0.5	51.7	27
2EZ75D5	SZ4575	75	6.7	90	2000	0.25	0.5	56.0	24
2EZ82D5	SZ4582	82	6.1	100	3000	0.25	0.5	62.2	22
2EZ91D5	SZ4591	91	5.5	125	3000	0.25	0.5	69.2	20
2EZ100D5	SZ45B0	100	5.0	175	3000	0.25	0.5	76.0	18
2EZ110D5	SZ45B1	110	4.5	250	4000	0.25	0.5	83.6	17
2EZ120D5	SZ45B2	120	4.2	325	4500	0.25	0.5	91.2	15
2EZ130D5	SZ45B3	130	3.8	400	5000	0.25	0.5	98.8	14
2EZ140D5	SZ45B4	140	3.6	500	5500	0.25	0.5	106.4	13
2EZ150D5	SZ45B5	150	3.3	575	6000	0.25	0.5	114.0	12
2EZ160D5	SZ45B6	160	3.1	650	6500	0.25	0.5	121.6	11
2EZ170D5	SZ45B7	170	2.9	675	7000	0.25	0.5	130.4	11
2EZ180D5	SZ45B8	180	2.8	725	7000	0.25	0.5	136.8	10
2EZ190D5	SZ45B9	190	2.6	825	8000	0.25	0.5	144.8	10
2EZ200D5	SZ45D0	200	2.5	900	8000	0.25	0.5	152.0	9.0
2EZ220D5	SZ45D2	220	2.0	2000	8500	0.25	0.5	167	8.0
2EZ270D5	SZ45D7	270	1.6	2200	8500	0.25	0.5	205	6.7
2EZ300D5	SZ45E0	300	1.5	2200	9000	0.25	0.5	228	5.9
2EZ330D5	SZ45E3	330	1.4	2300	9000	0.25	0.5	250	5.4

Zener Diodes 2W 2EZ2.7D5/SZ452H to 2EZ330D5/SZ45E3, DO-41/SMA



Dim	Millimeters		Inches	
	Min	Max	Min	Max
A	25.4	---	1.000	---
B	4.20	5.20	0.165	0.205
C	0.70	0.90	0.028	0.034
D	2.00	2.70	0.080	0.107



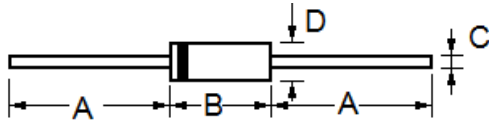
Dim	Millimeters		Inches	
	Min	Max	Min	Max
A	3.99	4.50	0.157	0.177
B	2.54	2.79	0.100	0.110
C	1.25	1.65	0.049	0.065
D	0.152	0.305	0.006	0.012
E	4.93	5.28	0.194	0.208
F	----	0.203	----	0.008
G	1.98	2.29	0.078	0.090
H	0.76	1.52	0.030	0.060



## Zener Diodes 3W 3EZ3.9D5/SZ553J to 2EZ200D5/SZ55D0, DO-41/SMA

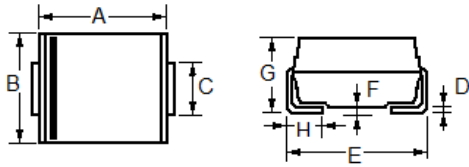
Type No.		Nominal Zener Voltage		Maximum Zener Impedance			Maximum Reverse Leakage Current		Maximum DC Zener Current
		VZ@IZT	IZT	ZZT@IZT	ZZK@IZK	IZK	IR @ VR	IZM	
Axial Lead	SMD	(V)	(mA)	( $\Omega$ )	( $\Omega$ )	(mA)	( $\mu$ A)	(V)	(mA)
3EZ3.9D5	SZ553J	3.9	192	4.5	400	1.0	80	1.0	630
3EZ4.3D5	SZ554D	4.3	174	4.5	400	1.0	30	1.0	590
3EZ4.7D5	SZ554H	4.7	160	4.0	500	1.0	20	1.0	550
3EZ5.1D5	SZ555B	5.1	147	3.5	550	1.0	5.0	1.0	520
3EZ5.6D5	SZ555G	5.6	134	2.5	600	1.0	5.0	2.0	480
3EZ6.2D5	SZ556C	6.2	121	1.5	700	1.0	5.0	3.0	435
3EZ6.8D5	SZ556I	6.8	110	2.0	700	1.0	50	4.0	393
3EZ7.5D5	SZ557F	7.5	100	2.0	700	0.5	50	5.0	360
3EZ8.2D5	SZ558C	8.2	91	2.3	700	0.5	50	6.0	330
3EZ9.1D5	SZ559B	9.1	82	2.5	700	0.5	50	7.0	297
3EZ10D5	SZ5510	10	75	3.5	700	0.25	50	7.6	270
3EZ11D5	SZ5511	11	68	4.0	700	0.25	50	8.4	225
3EZ12D5	SZ5512	12	63	4.5	700	0.25	1.0	9.1	246
3EZ13D5	SZ5513	13	58	4.5	700	0.25	0.5	9.9	208
3EZ14D5	SZ5514	14	53	5.0	700	0.25	0.5	10.6	193
3EZ15D5	SZ5515	15	50	5.5	700	0.25	0.5	11.4	180
3EZ16D5	SZ5516	16	47	5.5	700	0.25	0.5	12.2	169
3EZ17D5	SZ5517	17	44	6.0	750	0.25	0.5	13.0	159
3EZ18D5	SZ5518	18	42	6.0	750	0.25	0.5	13.7	150
3EZ19D5	SZ5519	19	40	7.0	750	0.25	0.5	14.4	142
3EZ20D5	SZ5520	20	37	7.0	750	0.25	0.5	15.2	135
3EZ22D5	SZ5522	22	34	8.0	750	0.25	0.5	16.7	123
3EZ24D5	SZ5524	24	31	9.0	750	0.25	0.5	18.2	112
3EZ27D5	SZ5527	27	28	10	750	0.25	0.5	20.6	100
3EZ28D5	SZ5528	28	27	12	750	0.25	0.5	21.0	96
3EZ30D5	SZ5530	30	25	16	1000	0.25	0.5	22.5	90
3EZ33D5	SZ5533	33	23	20	1000	0.25	0.5	25.1	82
3EZ36D5	SZ5536	36	21	22	1000	0.25	0.5	27.4	75
3EZ39D5	SZ5539	39	19	28	1000	0.25	0.5	29.7	69
3EZ43D5	SZ5543	43	17	33	1500	0.25	0.5	32.7	63
3EZ47D5	SZ5547	47	16	38	1500	0.25	0.5	35.6	57
3EZ51D5	SZ5551	51	15	45	1500	0.25	0.5	38.8	53
3EZ56D5	SZ5556	56	13	50	2000	0.25	0.5	42.6	48
3EZ62D5	SZ5562	62	12	55	2000	0.25	0.5	47.1	44
3EZ68D5	SZ5568	68	11	70	2000	0.25	0.5	51.7	40
3EZ75D5	SZ5575	75	10	85	2000	0.25	0.5	56.0	36
3EZ82D5	SZ5582	82	9.1	95	3000	0.25	0.5	62.2	33
3EZ91D5	SZ5591	91	8.2	115	3000	0.25	0.5	69.2	30
3EZ100D5	SZ55B0	100	7.5	160	3000	0.25	0.5	76.0	27
3EZ110D5	SZ55B1	110	6.8	225	4000	0.25	0.5	83.6	25
3EZ120D5	SZ55B2	120	6.3	300	4500	0.25	0.5	91.2	22
3EZ130D5	SZ55B3	130	5.8	375	5000	0.25	0.5	98.8	21
3EZ140D5	SZ55B4	140	5.3	475	5000	0.25	0.5	106.4	19
3EZ150D5	SZ55B5	150	5.0	550	6000	0.25	0.5	114.0	18
3EZ160D5	SZ55B6	160	4.7	625	6500	0.25	0.5	121.6	17
3EZ170D5	SZ55B7	170	4.4	650	7000	0.25	0.5	130.4	16
3EZ180D5	SZ55B8	180	4.2	700	7000	0.25	0.5	136.8	15
3EZ190D5	SZ55B9	190	4.0	800	8000	0.25	0.5	144.8	14
3EZ200D5	SZ55D0	200	3.7	875	8000	0.25	0.5	152.0	13

Zener Diodes 3W 3EZ3.9D5/SZ553J to 2EZ200D5/SZ55D0, DO-41/SMA



DO-41

Dim	Millimeters		Inches	
	Min	Max	Min	Max
A	25.4	---	1.000	---
B	4.20	5.20	0.165	0.205
C	0.70	0.90	0.028	0.034
D	2.00	2.70	0.080	0.107



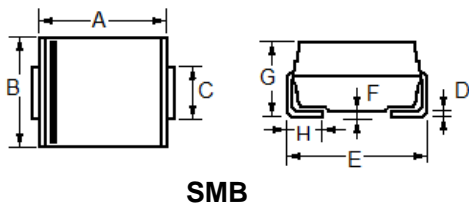
SMA

Dim	Millimeters		Inches	
	Min	Max	Min	Max
A	3.99	4.50	0.157	0.177
B	2.54	2.79	0.100	0.110
C	1.25	1.65	0.049	0.065
D	0.152	0.305	0.006	0.012
E	4.93	5.28	0.194	0.208
F	----	0.203	----	0.008
G	1.98	2.29	0.078	0.090
H	0.76	1.52	0.030	0.060

## Zener Diodes 3W

## 1SMB5913A to 1SMB5956A, SMB

Type No.	Nominal Zener Voltage	Test Current	Maximum Zener Impedance			Maximum Reverse Leakage Current		Maximum DC Zener Current
	VZ@IZT		ZZT@IZT	ZZK@IZK	IZK	IR @ VR		
	(V)	(mA)	(Ω)	(Ω)	(mA)	(μA)	(mA)	IZM (mA)
1SMB5913A	3.3	113.6	10.0	500	1.0	100	1.0	454
1SMB5914A	3.6	104.2	9.0	500	1.0	75	1.0	416
1SMB5915A	3.9	96.1	7.5	500	1.0	25	1.0	384
1SMB5916A	4.3	87.2	6.0	500	1.0	5.0	1.0	348
1SMB5917A	4.7	79.8	5.0	500	1.0	5.0	1.5	319
1SMB5918A	5.1	73.5	4.0	350	1.0	5.0	2.0	294
1SMB5919A	5.6	66.9	2.0	250	1.0	5.0	3.0	267
1SMB5920A	6.2	60.5	2.0	200	1.0	5.0	4.0	241
1SMB5921A	6.8	55.1	2.5	200	1.0	5.0	5.2	220
1SMB5922A	7.5	50.0	3.0	400	0.5	5.0	6.0	200
1SMB5923A	8.2	45.7	3.5	400	0.5	5.0	6.5	182
1SMB5924A	9.1	41.2	4.0	500	0.5	5.0	7.0	164
1SMB5925A	10	37.5	4.5	500	0.25	5.0	8.0	150
1SMB5926A	11	34.1	5.5	550	0.25	1.0	8.4	136
1SMB5927A	12	31.2	6.5	550	0.25	1.0	9.1	125
1SMB5928A	13	28.8	7.0	550	0.25	1.0	9.9	115
1SMB5929A	15	25.0	9.0	600	0.25	1.0	11.4	100
1SMB5930A	16	23.4	10	600	0.25	1.0	12.2	93
1SMB5931A	18	20.8	12	650	0.25	1.0	13.7	83
1SMB5932A	20	18.7	14	650	0.25	1.0	15.2	75
1SMB5933A	22	17.0	17.5	650	0.25	1.0	16.7	68
1SMB5934A	24	15.6	19	700	0.25	1.0	18.2	62
1SMB5935A	27	13.9	23	700	0.25	1.0	20.6	55
1SMB5936A	30	12.5	26	750	0.25	1.0	22.8	50
1SMB5937A	33	11.4	33	800	0.25	1.0	25.1	45
1SMB5938A	36	10.4	38	850	0.25	1.0	27.4	41
1SMB5939A	39	9.6	45	900	0.25	1.0	29.7	38
1SMB5940A	43	8.7	53	950	0.25	1.0	32.7	34
1SMB5941A	47	8.0	67	1000	0.25	1.0	35.8	31
1SMB5942A	51	7.3	70	1100	0.25	1.0	38.8	29
1SMB5943A	56	6.7	86	1300	0.25	1.0	42.6	26
1SMB5944A	62	6.0	100	1500	0.25	1.0	47.1	24
1SMB5945A	68	5.5	120	1700	0.25	1.0	51.7	22
1SMB5946A	75	5.0	140	2000	0.25	1.0	56.0	20
1SMB5947A	82	4.6	160	2500	0.25	1.0	62.2	18
1SMB5948A	91	4.1	200	3000	0.25	1.0	69.2	16
1SMB5949A	100	3.7	250	3100	0.25	1.0	76.0	15
1SMB5950A	110	3.4	300	4000	0.25	1.0	83.6	13
1SMB5951A	120	3.1	380	4500	0.25	1.0	91.2	12
1SMB5952A	130	2.9	450	5000	0.25	1.0	98.8	11
1SMB5953A	150	2.5	600	6000	0.25	1.0	114.0	10
1SMB5954A	160	2.3	700	6500	0.25	1.0	121.6	9.0
1SMB5955A	180	2.1	900	7000	0.25	1.0	136.8	8.0
1SMB5956A	200	1.9	1200	8000	0.25	1.0	152.0	7.0



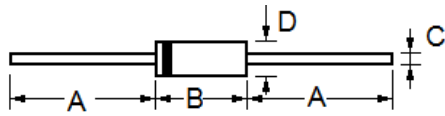
Dim	Millimeters		Inches	
	Min	Max	Min	Max
A	4.06	4.57	0.160	0.180
B	3.30	3.94	0.130	0.155
C	1.95	2.20	0.077	0.086
D	0.125	0.305	0.006	0.012
E	5.21	5.59	0.205	0.220
F	----	0.203	----	0.008
G	2.13	2.44	0.084	0.096
H	0.76	1.52	0.030	0.060

## Zener Diodes 5W 1N5333A/SZ603D to 1N5388ASZ60D0, DO-15/SMB

Type No.		Nominal Zener Voltage		Maximum Zener Impedance			Maximum Reverse Leakage Current		Maximum DC Zener Current
		VZ@IZT (V)	IZT (mA)	ZZT@IZT ( $\Omega$ )	ZZK@IZK ( $\Omega$ )	IZK (mA)	IR @ VR ( $\mu$ A) (V)		
Axial Lead	SMD								IZM (mA)
1N5333A	SZ603D	3.3	380	3.0	400	1.0	300	1.0	1440
1N5334A	SZ603G	3.6	350	2.5	500	1.0	150	1.0	1320
1N5335A	SZ603J	3.9	320	2.0	500	1.0	50	1.0	1220
1N5336A	SZ604D	4.3	290	2.0	500	1.0	10	1.0	1100
1N5337A	SZ604H	4.7	260	2.0	450	1.0	5.0	1.0	1010
1N5338A	SZ605B	5.1	240	1.5	400	1.0	1.0	1.0	930
1N5339A	SZ605G	5.6	220	1.0	400	1.0	1.0	2.0	856
1N5340A	SZ606A	6.0	200	1.0	300	1.0	1.0	3.0	790
1N5341A	SZ606C	6.2	200	1.0	200	1.0	1.0	4.0	765
1N5342A	SZ606I	6.8	175	1.0	200	1.0	150	4.9	700
1N5343A	SZ607F	7.5	175	1.5	200	1.0	150	5.4	630
1N5344A	SZ608C	8.2	150	1.5	200	1.0	150	5.9	580
1N5345A	SZ608H	8.7	150	2.0	200	1.0	150	6.3	545
1N5346A	SZ609B	9.1	150	2.0	150	1.0	150	6.6	520
1N5347A	SZ6010	10	125	2.0	125	1.0	150	7.2	475
1N5348A	SZ6011	11	125	2.5	125	1.0	150	8.0	430
1N5349A	SZ6012	12	100	2.5	125	1.0	2.0	8.6	395
1N5350A	SZ6013	13	100	2.5	100	1.0	1.0	9.4	365
1N5351A	SZ6014	14	100	2.5	75	1.0	1.0	10.1	340
1N5352A	SZ6015	15	75	2.5	75	1.0	1.0	10.8	315
1N5353A	SZ6016	16	75	2.5	75	1.0	1.0	11.5	295
1N5354A	SZ6017	17	70	2.5	75	1.0	0.5	12.2	280
1N5355A	SZ6018	18	65	2.5	75	1.0	0.5	13.0	265
1N5356A	SZ6019	19	65	8.0	75	1.0	0.5	13.7	250
1N5357A	SZ6020	20	65	3.0	75	1.0	0.5	14.4	237
1N5358A	SZ6022	22	50	3.5	75	1.0	0.5	15.8	216
1N5359A	SZ6024	24	50	3.5	100	1.0	0.5	17.3	198
1N5360A	SZ6025	25	50	4.0	110	1.0	0.5	18.0	190
1N5361A	SZ6027	27	50	5.0	120	1.0	0.5	19.4	176
1N5362A	SZ6028	28	50	6.0	130	1.0	0.5	20.1	170
1N5363A	SZ6030	30	40	8.0	140	1.0	0.5	21.6	158
1N5364A	SZ6033	33	40	10	150	1.0	0.5	23.8	144
1N5365A	SZ6036	36	30	11	160	1.0	0.5	25.9	132
1N5366A	SZ6039	39	30	14	170	1.0	0.5	28.1	122
1N5367A	SZ6043	43	30	20	190	1.0	0.5	31.0	110
1N5368A	SZ6047	47	25	25	210	1.0	0.5	33.8	100
1N5369A	SZ6051	51	25	27	230	1.0	0.5	36.7	93.0
1N5370A	SZ6056	56	20	35	280	1.0	0.5	40.3	86.0
1N5371A	SZ6060	60	20	40	350	1.0	0.5	43.0	79.0
1N5372A	SZ6062	62	20	42	400	1.0	0.5	44.6	76.0
1N5373A	SZ6068	68	20	44	500	1.0	0.5	49.0	70.0
1N5374A	SZ6075	75	20	45	620	1.0	0.5	54.0	63.0
1N5375A	SZ6082	82	15	65	720	1.0	0.5	59.0	58.0
1N5376A	SZ6087	87	15	75	760	1.0	0.5	63.0	54.5
1N5377A	SZ6091	91	15	75	760	1.0	0.5	65.5	52.5
1N5378A	SZ60B0	100	12	90	800	1.0	0.5	72.0	47.5
1N5379A	SZ60B1	110	12	125	1000	1.0	0.5	79.2	43.0
1N5380A	SZ60B2	120	10	170	1150	1.0	0.5	86.4	39.5
1N5381A	SZ60B3	130	10	190	1250	1.0	0.5	93.2	36.6
1N5382A	SZ60B4	140	8.0	230	1500	1.0	0.5	101	34.0
1N5383A	SZ60B5	150	8.0	330	1500	1.0	0.5	108	31.6
1N5384A	SZ60B6	160	8.0	350	1650	1.0	0.5	115	29.4
1N5385A	SZ60B7	170	8.0	380	1750	1.0	0.5	122	28.0
1N5386A	SZ60B8	180	5.0	430	1750	1.0	0.5	130	26.4
1N5387A	SZ60B9	190	5.0	450	1850	1.0	0.5	137	25.0
1N5388A	SZ60D0	200	5.0	480	1850	1.0	0.5	144	23.6

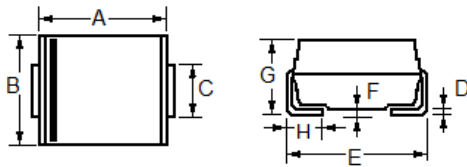
Zener Diodes 5W

1N5333A/SZ603D to 1N5388ASZ60D0, DO-15/SMB



DO-15

Dim	Millimeters		Inches	
	Min	Max	Min	Max
A	25.4	---	1.000	---
B	5.80	7.60	0.230	0.300
C	0.70	0.90	0.028	0.034
D	2.60	3.60	0.104	0.140



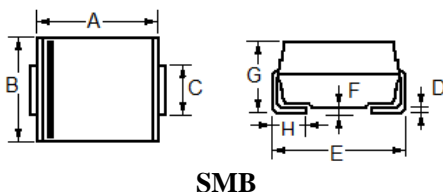
SMB

Dim	Millimeters		Inches	
	Min	Max	Min	Max
A	4.06	4.57	0.160	0.180
B	3.30	3.94	0.130	0.155
C	1.95	2.20	0.077	0.086
D	0.125	0.305	0.006	0.012
E	5.21	5.59	0.205	0.220
F	---	0.203	---	0.008
G	2.13	2.44	0.084	0.096
H	0.76	1.52	0.030	0.060

## Zener Diodes 5W

## SMBJ5333A to SMBJ5388A, SMB

Type No.	Nominal Zener Voltage	Test Current	Maximum Zener Impedance			Maximum Reverse Leakage Current			Maximum DC Zener Current
	VZ@IZT		ZZT@IZT	ZZK@IZK	IZK	IR @ VR (V)		IZM	
Axial Lead	(V)	(mA)	( $\Omega$ )	( $\Omega$ )	(mA)	( $\mu$ A)	Suffix "A"	Suffix "B"	(mA)
SMBJ5333A	3.3	380	3.0	400	1.0	300	1.0	1.0	1440
SMBJ5334A	3.6	350	2.5	500	1.0	150	1.0	1.0	1320
SMBJ5335A	3.9	320	2.0	500	1.0	50	1.0	1.0	1220
SMBJ5336A	4.3	290	2.0	500	1.0	10	1.0	1.0	1100
SMBJ5337A	4.7	260	2.0	450	1.0	5.0	1.0	1.0	1010
SMBJ5338A	5.1	240	1.5	400	1.0	1.0	1.0	1.0	930
SMBJ5339A	5.6	220	1.0	400	1.0	1.0	2.0	2.0	856
SMBJ5340A	6.0	200	1.0	300	1.0	1.0	3.0	3.0	790
SMBJ5341A	6.2	200	1.0	200	1.0	1.0	4.0	3.0	765
SMBJ5342A	6.8	175	1.0	200	1.0	150	4.9	5.2	700
SMBJ5343A	7.5	175	1.5	200	1.0	150	5.4	5.7	630
SMBJ5344A	8.2	150	1.5	200	1.0	150	5.9	6.2	580
SMBJ5345A	8.7	150	2.0	200	1.0	150	6.25	6.6	545
SMBJ5346A	9.1	150	2.0	150	1.0	150	6.6	6.9	520
SMBJ5347A	10	125	2.0	125	1.0	150	7.2	7.6	475
SMBJ5348A	11	125	2.5	125	1.0	150	8.0	8.4	430
SMBJ5349A	12	100	2.5	125	1.0	2.0	8.6	9.1	395
SMBJ5350A	13	100	2.5	100	1.0	1.0	9.4	9.9	365
SMBJ5351A	14	100	2.5	75	1.0	1.0	10.1	10.6	340
SMBJ5352A	15	75	2.5	75	1.0	1.0	10.8	11.5	315
SMBJ5353A	16	75	2.5	75	1.0	1.0	11.5	12.2	295
SMBJ5354A	17	70	2.5	75	1.0	0.5	12.2	12.9	280
SMBJ5355A	18	65	2.5	75	1.0	0.5	13.0	13.7	265
SMBJ5356A	19	65	8.0	75	1.0	0.5	13.7	14.4	250
SMBJ5357A	20	65	3.0	75	1.0	0.5	14.4	15.2	237
SMBJ5358A	22	50	3.5	75	1.0	0.5	15.8	16.7	216
SMBJ5359A	24	50	3.5	100	1.0	0.5	17.3	18.2	198
SMBJ5360A	25	50	4.0	110	1.0	0.5	18.0	19.0	190
SMBJ5361A	27	50	5.0	120	1.0	0.5	19.4	20.6	176
SMBJ5362A	28	50	6.0	130	1.0	0.5	20.1	21.2	170
SMBJ5363A	30	40	8.0	140	1.0	0.5	21.6	22.8	158
SMBJ5364A	33	40	10	150	1.0	0.5	23.8	25.1	144
SMBJ5365A	36	30	11	160	1.0	0.5	25.9	27.4	132
SMBJ5366A	39	30	14	170	1.0	0.5	28.1	29.7	122
SMBJ5367A	43	30	20	190	1.0	0.5	31.0	32.7	110
SMBJ5368A	47	25	25	210	1.0	0.5	33.8	35.8	100
SMBJ5369A	51	25	27	230	1.0	0.5	36.7	38.8	93.0
SMBJ5370A	56	20	35	280	1.0	0.5	40.3	42.6	86.0
SMBJ5371A	60	20	40	350	1.0	0.5	43.0	45.5	79.0
SMBJ5372A	62	20	42	400	1.0	0.5	44.6	47.1	76.0
SMBJ5373A	68	20	44	500	1.0	0.5	49.0	51.7	70.0
SMBJ5374A	75	20	45	620	1.0	0.5	54.0	56.0	63.0
SMBJ5375A	82	15	65	720	1.0	0.5	59.0	62.2	58.0
SMBJ5376A	87	15	75	760	1.0	0.5	63.0	66.0	54.5
SMBJ5377A	91	15	75	760	1.0	0.5	65.5	69.2	52.5
SMBJ5378A	100	12	90	800	1.0	0.5	72.0	76.0	47.5
SMBJ5379A	110	12	125	1000	1.0	0.5	79.2	83.6	43.0
SMBJ5380A	120	10	170	1150	1.0	0.5	86.4	91.2	39.5
SMBJ5381A	130	10	190	1250	1.0	0.5	93.2	98.8	36.6
SMBJ5382A	140	8.0	230	1500	1.0	0.5	101	106	34.0
SMBJ5383A	150	8.0	330	1500	1.0	0.5	108	114	31.6
SMBJ5384A	160	8.0	350	1650	1.0	0.5	115	122	29.4
SMBJ5385A	170	8.0	380	1750	1.0	0.5	122	129	28.0
SMBJ5386A	180	5.0	430	1750	1.0	0.5	130	137	26.4
SMBJ5387A	190	5.0	450	1850	1.0	0.5	137	144	25.0
SMBJ5388A	200	5.0	480	1850	1.0	0.5	144	152	23.6



Dim	Millimeters		Inches	
	Min	Max	Min	Max
A	4.06	4.57	0.160	0.180
B	3.30	3.94	0.130	0.155
C	1.95	2.20	0.077	0.086
D	0.125	0.305	0.006	0.012
E	5.21	5.59	0.205	0.220
F	---	0.203	---	0.008
G	2.13	2.44	0.084	0.096
H	0.76	1.52	0.030	0.060