

*New Jersey Semi-Conductor Products, Inc.*

20 STERN AVE.  
 SPRINGFIELD, NEW JERSEY 07081  
 U.S.A.

TELEPHONE: (973) 376-2922  
 (212) 227-6005  
 FAX: (973) 376-8960

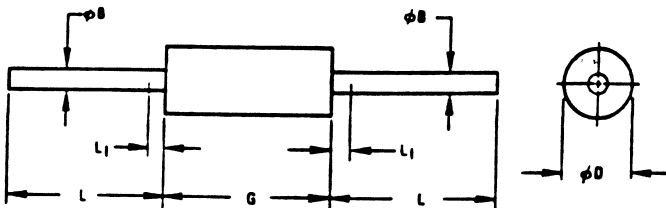
PARAMETERS

SI RECTIFIER, 200mA < I(O)/I(F) ≤ 500mA 1N648

Description: Si Rectifier, 200mA < I(O)/I(F) ≤ 500mA

Manufacturer.....	
Mil/High-Rel? (Y/N).....	
I(out) (If AVG) Max.....	400m
@Temp. (test) (°C).....	25
VRRM.....	500
1-Cycle Surge Current (A).....	3.0
Vf Max.....	1.0
@If (test).....	.40
@Temp. (test) for Vf).....	25
Ir @25°C.....	.20u
@Volts (test) (V).....	500
Ir @ Diff. Temp (A).....	.02m
@Temp (test) (°C).....	100
Oper. Temp (°C) Max.....	150
Pkg Style.....	D0-14
Surface Mounted (Y/N).....	N

2 It(rms)



MILLIMETER DIMENSIONS ARE DERIVED FROM ORIGINAL INCH DIMENSIONS

SYMBOL	INCHES		MILLIMETERS		NOTES
	MIN.	MAX.	MIN.	MAX.	
BB	.018	.022	0.458	0.558	-
BD	.085	.107	2.16	2.71	1
G	-	.300	5.85	7.62	1
L	1.000	-	25.40	-	-
L1	-	.050	-	1.27	2