



Quality Products. Service Excellence.

ABS Plastic Multipurpose Enclosures w/ Card Guides 1591 Series

Flame Retardant, General Purpose, Flanged Lid or Bottom

Key Features



- Ideally suited for vertical mounting of printed circuit boards (internal side walls include molded in card guides - see photo to the right).
- Integral card guides accept 1.5 mm (0.062") P.C. cards.
- Lap joint construction provides protection against access of dust and splashing water.
- Designed to meet IP54.
- Standard versions are molded from easy to machine flame retardant ABS plastic which carries a UL flammability rating of 94V-0.
- Economy versions are molded from general purpose (not flame-retardant) plastic.
- On standard versions the lid is secured with M3 x 10 mm Phillips machine screws, threaded into integral brass bushings. Perfect for applications when repetitive assembly and disassembly are required (see photo below to the right).
- Economy versions are assembled with self tapping screws into fully plastic posts.
- Black enclosures include black screws, all others - standard nickel finish screws.

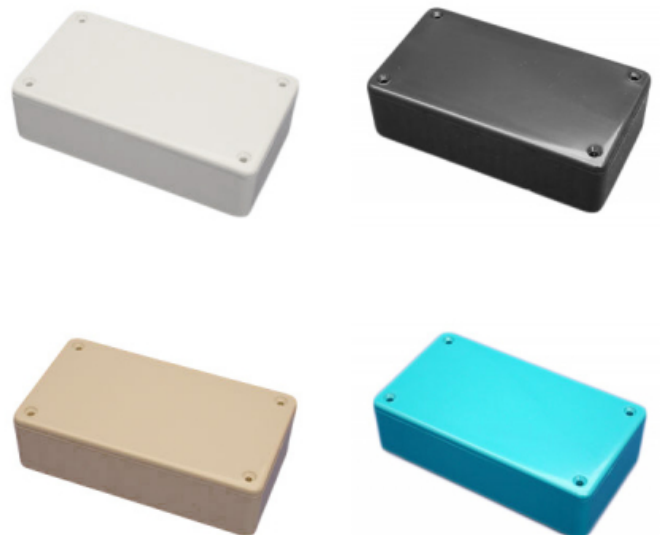
Alternatives

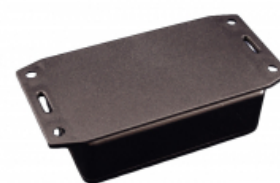
- If EMI/ RFI Shielding is required, try series **1591R**.
- If card guides are not required or horizontal mounting of printed circuit boards is preferred, try series **1591XX**.
- For transparent polycarbonate versions, try series **1591T**.

Photo Features

1591 Series enclosures are available in four colors.

- Gray ("GY")
- Black ("BK")
- Beige ("BG")
- Blue ("BU")





Integral card guides accept 1.5 mm (0.062") P.C. cards. Machine screws thread into brass bushing to attach the lid.

Available with wall mounting flanges molded into the lid.

Also available with an accessory flange attached to the bottom.

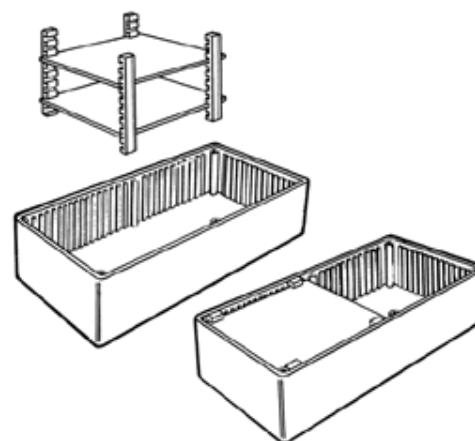
P.C. Board Card Adaptors:

- Allows mounting of PC boards horizontally within the enclosure.
- Molded from Flame retardant ABS plastic

Part Number **1591Z6** - Package of 6

Part Number **1591Z50** - Package of 50

Part Number **1591Z100** - Package of 100



Enclosures Without Mounting Flanges

Flame Retardant ABS Enclosures				General Purpose ABS Enclosures		Length	Width	Depth (less lid)	Clear Lid Accessory
Beige	Black	Blue	Gray	Black	Gray				
1591MBG	1591MBK	1591MBU	1591MGY	1591MSBK	1591MSGY	3.30	2.20	0.80	1591LC
1591LBG	1591LBK	1591LBU	1591LGY	1591LSBK	1591LSGY	3.30	2.20	1.40	1591LC
1591ABG	1591ABK	1591ABU	1591AGY	1591ASBK	1591ASGY	3.90	2.00	0.80	1591AC
1591SBG	1591SBK	1591SBU	1591SGY	1591SSBK	1591SSGY	4.30	3.20	1.60	1591SC
1591BBG	1591BBK	1591BBU	1591BGY	1591BSBK	1591BSGY	4.40	2.40	1.10	1591BC
1591CBG	1591CBK	1591CBU	1591CGY	1591CSBK	1591CSGY	4.70	2.60	1.40	1591CC
1591TBG	1591TBK	1591TBU	1591TGY	1591TSBK	1591TSGY	4.70	3.20	2.20	1591TC
1591UBG	1591UBK	1591UBU	1591UGY	1591USBK	1591USGY	4.70	4.70	2.20	1591UC
1591VBG	1591VBK	1591VBU	1591VGY	1591VSBK	1591VSGY	4.70	4.70	3.50	1591VC
1591GBG	1591GBK	1591GBU	1591GGY	1591GSBK	1591GSGY	4.80	3.70	1.20	1591GC
1591DBG	1591DBK	1591DBU	1591DGY	1591DSBK	1591DSGY	5.90	3.20	1.80	1591DC
1591HBG	1591HBK	1591HBU	1591HGY	1591HSBK	1591HSGY	6.50	2.80	1.00	1591HC
1591EBG	1591EBK	1591EBU	1591EGY	1591ESBK	1591ESGY	7.48	4.33	2.23	1591EC

Enclosures With Mounting Flanges

Flame Retardant ABS, Flanged Lid	General Purpose ABS, Flanged Lid	Flame Retardant, Bottom Flange	General Purpose ABS, Bottom Flange
----------------------------------	----------------------------------	--------------------------------	------------------------------------

Flame Retardant ABS, Flanged Lid		General Purpose ABS, Flanged Lid		Flame Retardant, Bottom Flange		General Purpose ABS, Bottom Flange		Depth		Clear Lid Accessory	
Black	Gray	Black	Black	Black	Gray	Black	Gray	Length	Width		(less lid)
1591MFLBK	1591MFLGY	1591MSFLBK	1591MF2BK	1591MF2GY	1591MF2SBK	1591MF2SGY		3.30	2.20	0.80	1591LC
1591LFLBK	1591LFLGY	1591LSFLBK	1591LF2BK	1591LF2GY	1591LF2SBK	1591LF2SGY		3.30	2.20	1.40	1591LC
1591AFLBK	1591AFLGY	1591ASFLBK	1591AF2BK	1591AF2GY	1591AF2SBK	1591AF2SGY		3.90	2.00	0.80	1591AC
1591SFLBK	1591SFLGY	1591SSFLBK	1591SF2BK	1591SF2GY	1591SF2SBK	1591SF2SGY		4.30	3.20	1.60	1591SC
1591BFLBK	1591BFLGY	1591BSFLBK	1591BF2BK	1591BF2GY	1591BF2SBK	1591BF2SGY		4.40	2.40	1.10	1591BC
1591CFLBK	1591CFLGY	1591CSFLBK	1591CF2BK	1591CF2GY	1591CF2SBK	1591CF2SGY		4.70	2.60	1.40	1591CC
1591TFLBK	1591TFLGY	1591TSFLBK	1591TF2BK	1591TF2GY	1591TF2SBK	1591TF2SGY		4.70	3.20	2.20	1591TC
1591UFLBK	1591UFLGY	1591USFLBK	1591UF2BK	1591UF2GY	1591UF2SBK	1591UF2SGY		4.70	4.70	2.20	1591UC
1591VFLBK	1591VFLGY	1591VSFLBK	1591VF2BK	1591VF2GY	1591VF2SBK	1591VF2SGY		4.70	4.70	3.50	1591VC
1591GFLBK	1591GFLGY	1591GSFLBK	1591GF2BK	1591GF2GY	1591GF2SBK	1591GF2SGY		4.80	3.70	1.20	1591GC
1591DFLBK	1591DFLGY	1591DSFLBK	1591DF2BK	1591DF2GY	1591DF2SBK	1591DF2SGY		5.90	3.20	1.80	1591DC
1591HFLBK	1591HFLGY	1591HSFLBK	1591HF2BK	1591HF2GY	1591HF2SBK	1591HF2SGY		6.50	2.80	1.00	1591HC
1591EFLBK	1591EFLGY	1591ESFLBK	1591EF2BK	1591EF2GY	1591EF2SBK	1591EF2SGY		7.48	4.33	2.23	1591EC

Data subject to change without notice

© 2018. Hammond Manufacturing Ltd. All rights reserved.