

The innovative SB® connectors provide cost-effective reliability, design flexibility and safety for your products' manufacture, installation and maintenance.

APP's 2 pole connector is available with a 120 amp rating, 600 Volts continuous AC or DC operation. There are SB® connectors for many applications and wire sizes, #2 to #6 AWG (33.6 to 13.3 mm<sup>2</sup>). Mechanical keys ensure connectors will only mate with connectors of the same color. Different color housings are selected to identify voltages, thus preventing mismatching of the power supply system.

## FEATURES

- **Molded side grooves**

*Allows for a secure panel mounting fit*

- **Mechanical keyed housings**

*Prevents accidental mating of components operating at different voltage levels*

- **Single-piece housing and unitized construction**

*Provides industrial quality and durability*



## PRODUCT SPECIFICATIONS

Connector Model	SB®120	Connector Model	SB®120
UL Current Rating (Amperes)*	120*	Life	
UL Voltage Ratings (Volts)	600*	a. No load (Contact/Disconnect Cycles)	To 10,000
Contact Barrel Wire Size (AWG)	#2 to #6	b. Under Load (Hot Plug 250 cycles @ 120V)	60A
(mm <sup>2</sup> )	33.3 to 13.3	Avg. Connection/Disconnect (lbs)	20
Maximum Wire Insulation Diameter (inches)	0.575	Operating Temperature Range °C**	-20° to 105°
(mm)	14.6	Flammability Rating of Housing Material	UL94 V-0
AVG Contact Resistance* (micro-ohms)	136		
Insulation Withstanding Test Voltage (Volts AC/DC)	2200		
Contact Retention Force (lbs)	100		

\* UL Rated for 75°C rated wire or cable size  
\*\* Contact factory for higher temperature rated connector  
SB®, UL and CSA Reference: This equipment is an Underwriters Laboratories Inc® recognized component. It is also listed by the Canadian Standards Association as certified.

## ORDERING INFORMATION

### 2 Pole Housing & 120 amp Contacts

Part Number	Housing Color	Wire	
		AWG	sq. mm
6800G1	Gray	#2	33.6
6801G1	Blue	#2	33.6
6802G1	Red	#2	33.6
6800G2	Gray	#4	21.1
6801G2	Blue	#4	21.1
6802G2	Red	#4	21.1
6800G3	Gray	#6	13.3
6801G3	Blue	#6	13.3
6802G3	Red	#6	13.3

### Housing Only

Part Number	Description
6810G1	Gray housing
6810G2	Blue housing
6810G3	Red housing

### 120 amp Contacts

Part Number	Description	Wire	
		AWG	sq. mm
1319-BK	Bulk, low detent	#2	33.6
1319G4-BK	Bulk, low detent	#4	21.2
1319G6-BK	Bulk, low detent	#6	13.3
6811G1	Set (2), low detent	#2	33.6
6811G2	Set (2), low detent	#4	21.1
6811G3	Set (2), low detent	#6	13.3

### Bushings

Part Number	Description	Wire	
		AWG	sq. mm
5919	Use with 6811G1	#2 to #4	33.6/21.2
5920	Use with 6811G1	#2 to #6	33.6/13.3
5921	Use with 6811G1	#2 to #8	33.6/8.4

### Accessories

Part Number	Description
SB120-HDL-RED	SB handle with hardware-red
981G1	Cable clamp for 2 single conductor cables
1467G1	Panel mounting bracket

### Tooling

Part Number	Description
1368	Hand tool - #2 to #8
1387G1	Pneumatic tool - #2 to #8
1388G4	- die for #2 to #8
1389G4	- locator #2 to #8

**HEADQUARTERS:** 13 Pratts Junction Road, P.O. Box 579, Sterling, MA 01564 T:978-422-3600 F:978-422-3700

**EUROPE:** Rathealy Road, Fermoy Co. Cork, Ireland T:353-(0)25-32277 F:353-(0)25-32296

**ASIA/PACIFIC:** IDEAL Anderson Asia Pacific Ltd., Unit 922-928 Topsail Plaza, 11 On Sum Street, Shatin N.T., Hong Kong

T:852-2636-0836 F:852-2635-9036

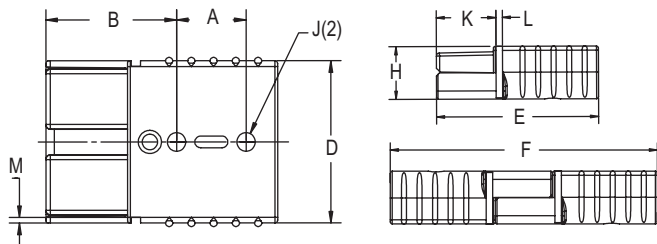
[www.andersonpower.com](http://www.andersonpower.com)

## DIMENSIONS

### Housing

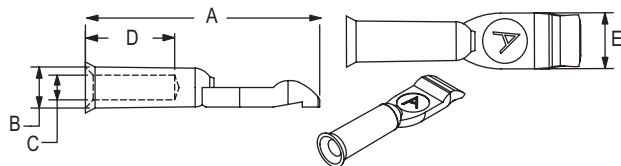
Series	-A-		-B-		-D-		-E-		-F-	
	mm	in.	mm	in.	mm	in.	mm	in.	mm	in.
SB®120	19.05	.75	35.81	1.41	44.45	1.75	63.5	2.50	104.65	4.12

Series	-H-		-J-		-K-		-L-		-M-	
	mm	in.	mm	in.	mm	in.	mm	in.	mm	in.
SB®120	20.62	.81	5.05	.20	23.37	.92	2.54	.10	1.52	.06



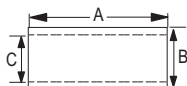
### Contacts

Part Number	Contact Detent	-A-	-B-	-C-	-D-	-E-
		mm	in.	mm	in.	mm
1319-BK	Low	50.8	2.00	11.1	.44	8.7
1319G4-BK	Low	50.8	2.00	11.1	.44	7.5
1319G6-BK	Low	50.8	2.00	11.1	.44	5.6
6811G1	Low	50.8	2.00	11.1	.44	8.7
6811G2	Low	50.8	2.00	11.1	.44	7.5
6811G3	Low	50.8	2.00	11.1	.44	5.6



### Bushings - (for use with 6811G1 contacts)

Part Number	Reduces From	-A-	-B-	-C-
		mm	in.	mm
5919	#2 to #4 AWG	21.34	.84	8.36
5920	#2 to #6 AWG	21.34	.84	8.36
5921	#2 to #8 AWG	21.34	.84	8.36



## TEMPERATURE RISE CHARTS

