

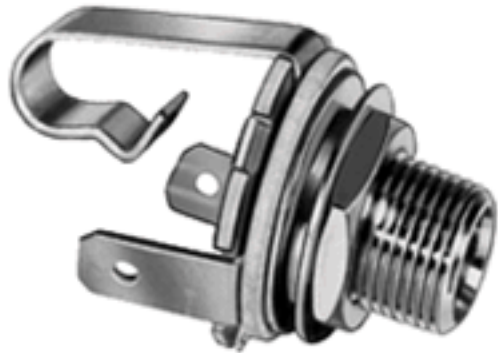
# Switchcraft®

[Previous Page](#) | [Return to Index](#) | [Next Page](#)

1



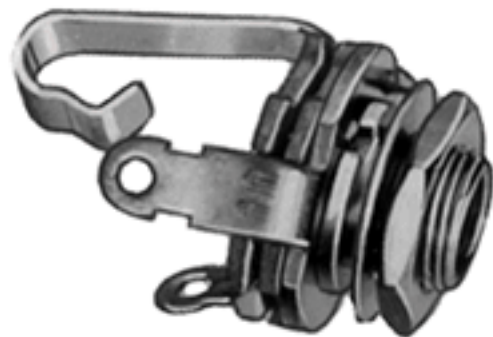
2



3



4



## 1/4" PHONE JACKS

1. 14B
2. FAL-11 .205 FASTON TERMINAL
3. PC-12A
4. 11

[click here to download a schematic drawing](#)

[click here to download a schematic drawing](#)

(you will need to have Adobe Acrobat installed on your system to do this)



## **Littel-Jax® COMMERCIAL PHONE JACKS**

### **2- and 3-CONDUCTOR**

Littel-Jax phone jacks mate with standard commercial phone plugs and are available with .25 inch and .21 inch inside diameter bushings.

## **MIL Littel-Jax® PHONE JACKS**

### **2- and 3-CONDUCTOR MIL-SPEC, MIL-J-641 (E)**

MIL jacks mate with MIL-type phone plugs with .25 inch (6.35mm) or .21 inch (5.34mm) diameter bushings. Numbers C11 and C12B have a non-turn locating pin which keys the jack to the mounting surface. For low contact resistance applications, jack number C12A has fine silver contacts on shunts and tip springs.

## **MOUNTING**

**Chassis/Panel:** See Mounting Data drawing below; small

hole is required only for jacks numbers C11 and C12B

with non-turn locating pin.

**Maximum Panel Thickness:** .156 inch (4mm) for standard

.276 inch (7mm) long bushing; .25 inch (6.35mm) for .375

inch (9.5mm) long bushing.

**NOTE:** For panels thicker than .25 inch see Thick Panel

Phone Jax.

**Insulated Mount:** See drawing. S1028 flatwasher and Part Number S1029 shoulder washer must be

ordered separately for mounting in .437 inch diameter hole.

**NOTE:** See Hi-D Jax® for jack specifically designed

for insulated mounting without additional washers.

**PC Board Mounting:** See Recommended PC Board Layout

drawing below for jacks with PC terminals. Recommended

PC board thickness is .062 inches.

**Mounting Centers:** 1.188 inch (30mm) recommended.

Centers may vary with jack selected, for example, Number

11 mounts on .813 inch (20.6mm) and 14B mounts on 1.125 inch (28.6mm) minimum centers.

<b>PREFIX OPTIONS</b>	<b>SERIES</b>	<b>CIRCUITRY</b>
<b>Blank-</b> 1/4" Commercial	Jack 1-Littel Jax®	1- I
<b>C-</b> Accepts Mill Plug		2A- III
<b>FA-</b> .205" Faston Terminals		2B- IV
<b>FAL-</b> .205" Faston Terminals and .375" Long Bushing		3- V
<b>L-</b> .375" Long Bushing		3A- VI
<b>PC-</b> PC Terminals		3B- VII
<b>S-</b> Accepts .206 Diameter Plugs		3E- IX
		4B- XII

<b>TWO CONDUCTOR PART NUMBERS</b>			
<b>Part Number</b>	<b>Description</b>	<b>Jack Schematic<sup>1</sup></b>	<b>Typical Mating Plug</b>

11	Open circuit	I	250
C11	MIL Number M641/6-1	I	440
FA11	.205 inch FASTON terminal	I	250
FAL11	.375 inch long bushing .205 FASTON terminal	I	250
L11	.375 inch long bushing	I	250
12A	Tip shunt	III	250
C12A	MILNumber M641/12-1	III	440
L12A	.375 inch long bushing	III	250
PC12A	PC board mount	III	250
13	Isolated "make" circuit	V	250
13A	Transfer circuit	VI	250
13E	Isolated "break" circuit	IX	250
<b>THREE CONDUCTOR PART NUMBERS</b>			
12B	Double open circuit	IV	267
L12B	.375 inch long bushing	IV	267
C12B	MIL number M641/5-1, .210 inch inside diameter	IV	480
13B	Tip shunt	VII	267
14B	Double closed circuit	XII	267
<b>PART NUMBERS (.210 inch inside diameter bushing)</b>			
S11	2 conductor	I	S250
S12A	2 conductor	III	S250
S12B	3 conductor	IV	S267
S13B	3 conductor	VII	S267
1 Refer to jack schematics on pages 65 and 66. Other circuits are available; contact factory.			

## SPECIFICATIONS

### MECHANICAL

**Life:** Commercial Jacks - 10,000 insertion/withdrawal

cycles, minimum.

Military Jacks - 20,000 insertions/withdrawals, minimum.

**Mechanical Shock:** Military Jacks - Per MIL-STD 202, method 213, Test Condition H (75g).

**Vibration:** Military Jacks - Per MIL-STD-202, method 213, (10-55 Hz).

**Insertion/Withdrawal Forces:** (see charts below)

<b>Commercial Jacks</b>		
Plug Diameter (inches)	.210	.250
Insertion (maximum)	7 lb.	7 lb.
Withdrawal (minimum)	1 lb.	1 lb.

<b>Military Jacks</b>			
<b>Part Number</b>	<b>C11</b>	<b>C12A</b>	<b>C12B</b>
Insertion (maximum)	6 lb.	7 lb.	6 lb.
Withdrawal (minimum)	2 lb.	3 lb.	1.5 lb.
Withdrawal (maximum)	7 lb.	7 lb.	5 lb.

## **ELECTRICAL**

**Contact Resistance:** Commercial Jacks - .030 ohms

maximum (initial), .050 ohms maximum (after humidity, durability exposure). Per MIL-STD-202E.

Military Jacks - .010 ohms maximum (initial), .020 ohms

maximum (after life), .10 ohms maximum (after salt spray).

**Insulation Resistance:** Commercial Jacks - 10,000 M(ohm)

minimum (initial), 1,000 M(ohm) minimum (after humidity).

Military Jacks - 10,000 M(ohm) minimum (initial), 1,000 M(ohm)

minimum (after humidity, durability exposure).

**Dielectric Withstanding Voltage:** 500 V, 60 Hz (rms) AC.

**Contact Rating:** 1 A, 25 V DC.

## **ENVIRONMENTAL**

**Thermal Range:** Commercial Jacks; -55°C to +85°C (non-

operating); -20°C to +65°C (operating).

Military Jacks; -55°C to +85°C (non-operating); -40°C to

+65°C (operating).

**Thermal Shock:** Commercial Jacks - Per MIL-STD 202,

method 107. Military Jacks - Per MIL-STD 202,  
method 107.

**Humidity:** Commercial Jacks - Per MIL-STD 202,

method 106. Military Jacks - 0% to 95% operating and  
non-operating.

**Salt Spray:** Commercial Jacks - Per MIL-STD 202,

method 101. Military Jacks - Per MIL-STD 202, method  
101 (48 hours).

**Moisture Resistance:** Military Jacks - Per MIL-STD 202,

method 106 (240 hours).

## MATERIAL

**Mounting Bushing:** Nickel-plated copper alloy.

**Insulation:** Rigid plastic.

**Springs:** Special copper alloy. Integral contacts are standard in the isolated switching circuits; fine silver contacts in C12A switching circuit.

**Sleeve Terminal:** Copper alloy.

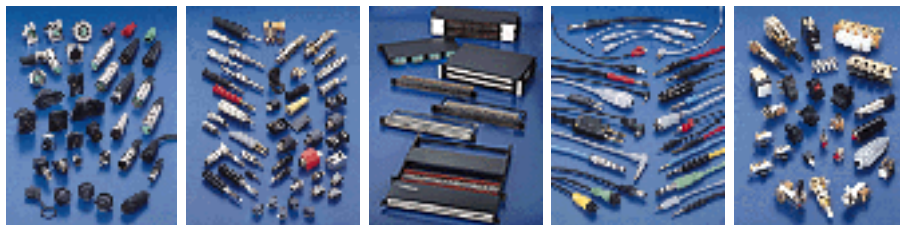
**Hardware:** Supplied with one Number **P10001** copper alloy nickel-plated hex nut, and one Number **S1022** steel nickel-plated washer - except copper alloy nickel-plated washer

Number **S10451** supplied on C11, C12A and C12B.

\* Commercial jacks feature integral contacts. Integral contacts should not be used where low contact resistance is a requirement.

[Previous Page](#) | [Return to Index](#) | [Next Page](#)

**To search a category please click on the corresponding icon:**



| [Connectors](#) | [Jacks and Plugs](#) |

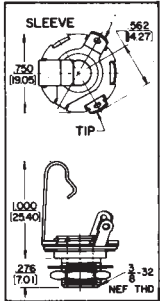
| [Patch Panels, Patch Kits & Jackfields](#) | [Cable Assemblies and Patch Cords](#) | [Switches](#) |

SWITCHCRAFT, INC. 5555 N. Elston Ave.  
Chicago, IL 60630 • 773 792-2700 • FAX: 773 792-2129

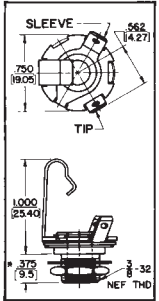
www.switchcraft.com

## 1/4" PHONE JACKS

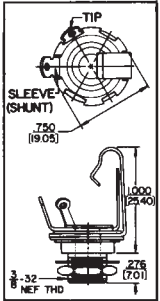
### Littel Jax® Jacks



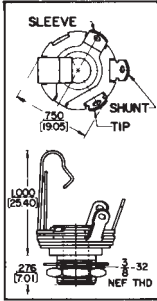
11, L-11, C-11, S-11



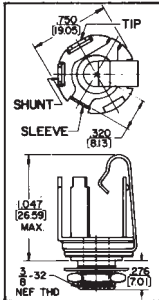
FA-11, FAL-11  
\*276 in. for No. FA-11



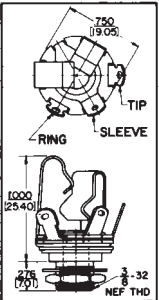
12



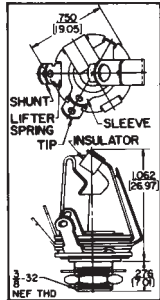
12A, L-12A,  
S-12A, SC-12A



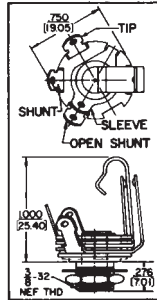
PC-12A



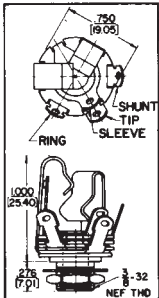
12B, C-12B,  
S-12B, SC-12B



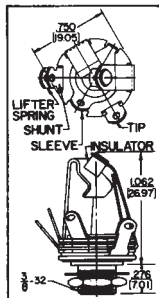
13



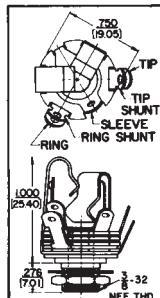
13A



13B, S-13B



13E



14B